

896459

WJM

79-1

nw
wade

FIELD BOOK

CAT. NO. S.E. 515/8674

norman wade company limited

W. J. McMillan

Nicola Project
CONTENTS

1979

PAGE NO.	JOB LOCATION	DATE SAMPLES
1	Toketic Showing	June 12/79
4	Highway traverse south of Cache Creek	June 13/79
6	Tour of Eagle Bay/Fennel contact area with Paul S. - Barriere	June 14/79
10	Fennel and sed. rocks to the south of Barriere R w. Graham M.	June 15/79
13	Touring showings north of N. Barriere Lake	June 16/79
17	Homestake Deposit Visit organising camp	June 17/79 June 18
20	Traverse along north side of Nicola Lake	June 19/79
27	Took COMINCO ON TOUR Working north of Merrett along Cinderella access road	June 20 June 21/79
36	Visited SV Claims with Egel Ferentzen + Egel Kirgard	June 22/79

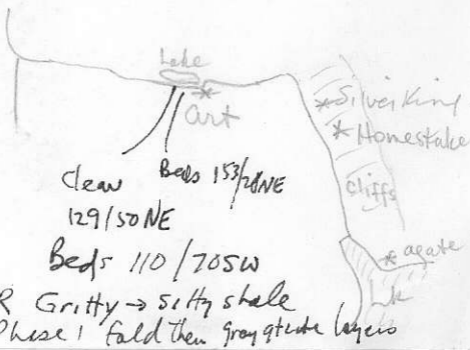
CONTENTS

PAGE NO.	JOB LOCATION	DATE
38	Motorcycle traversa to Chase Showenjo (Ken Saleken taken on tour of Iron Mtn in morning)	June 23/79
41	Keystone Property visit, Cognihallah Highway - Geologized the Highway on the way back	June 24/79
50	South border of sheet 2H	June 25/79
58	visited the AL SHOWING 92I/5E-120	June 26/79
	(END OF BOOK)	
	PRINTED IN CANADA ON 100% WATER PROOF PAPER 'Mark in the Mist'	

~ 2 m S Barriere

— Hwy to Fader Ck Sawmill
(Hwy goes rt - turn
left)

— follow ^{up} road to Squam
Bay



Howys Drill Core

Brodie Kingsvale 40 - 53
79-2 0/B

Red w/strip pyrite → amyg

Hem veins
salth
ep + chl
altm
Flow banded
andesite

Flow banded
Dk gray dacite and?
Fragmental in part
Sample 52'

BKC 52

79-4 Boulder like CK

lap puff - many acid
frags - sim. to bedrock
exposures nearby.

00578

Cozarhalla

Dk green ep vened

chl, basaltic and

cut by ^{bro} gk, plex ppy

(Arlington)

ch dark gray (chl) to

gray ven & dess. py.

refic phens basaltic and.

COQ 525

Sheared bleached \rightarrow
sericitized ~~E~~ FP

QFP

COQ 544

Musc chl (after bw)

Qtr As foliated




Qtr Monzonite

Pent (Ksp?) etc

adj to fractures.



NOTE KEEPING

<p>△ Triangulation Station.</p> <p>○ Transit Traverse Point.</p> <p>□ Stadia Station.</p> <p>S B Stone bound.</p> <p>Mon. Monument.</p> <p>I.B. Iron Bar.</p> <p>S.I.B. Standard Iron Bar.</p> <p>Stk. Stake.</p> <p>Spk. Spike.</p> <p>dh. Drill-hole.</p> <p>B M. Bench-mark.</p> <p>T.P. Turning point.</p> <p>C.C. Cut cross (+).</p> <p>cf Crow-foot (mark like this or).</p> <p>ccf Cut crow-foot (cut into wood or stone).</p> <p>—.—.— Fence.</p> <p>—x—x—x Chainline fence.</p> <p> Fence, showing on which side the posts are.</p> <p> Line of building; the outside line is the base-board, the cross-hatched part is the line of the stone or brick underpinning.</p>	<p>C. Center.</p> <p> Center line.</p> <p>n a. Nail.</p> <p>tk. Tack.</p> <p>cb. Curb.</p> <p>C.B. Catch basin.</p> <p>M.H. Manhole.</p> <p>Tel. Telephone pole.</p> <p>F.S. Foresight.</p> <p>B.S. Backsight.</p> <p>b.b. Base-board of fence.</p>
---	--

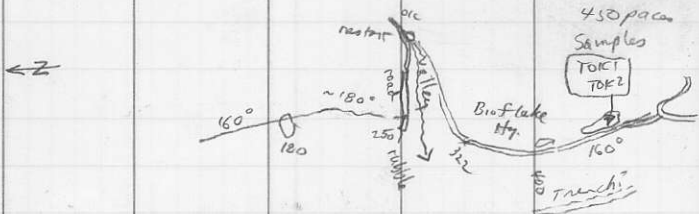
JOB

DATEPAGE

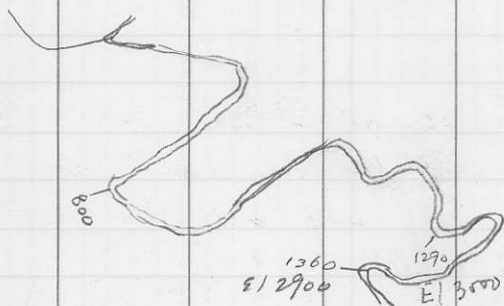
page	Traverse	Location	Stations [Samples]
1		TOKETIC SHOWING	
4		HWY SOUTH OF CACHE CREEK	
6		BARRIERE - TOUR WITH PAUL OF EAGLE BAY FMN	
10		- TOUR WITH GRAHAM OF FENNEL AND SEDS TO SOUTH	
13		VISITING SHOWINGS NEAR NORTH BARRIERE LAKE	
17		HOMESTAKE DEPOSIT	
20	1	Traverse Along north side of Nicola Lake	1-5 [1-4]
27	2	North of Merrill along Cinderella access road	6-8 [5-9]

PARTY CHIEF

WEATHER



SKETCH OF ROAD



Toketic

Sunny, warm

June 12/79

512 4000'

Leave truck + traverse $\sim 160^\circ - 180$
paces Hybrid g. dio etc's

250 paces end of road (trench) some
debris has ch / map stumps -
prob checking a mag high. CR
hybrid g dio but with fg zones
areas of cg late bio. & mel leuco
Granitic stumps.

430-500 Q Dio. CR cut by specularite veins
(213800) + veinlets for to faces. Copper

(mal + a3) assoc but sparse

one veinlet ^{3000'} $\frac{1}{2}$ ' 075/75 SE

massive pod - spec ^{-qtz-tour} w. pods of
cpy (flakely alt to mal.)

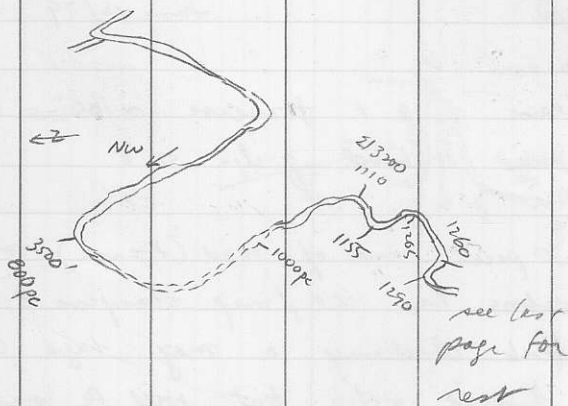
$\sim 110^\circ / 50$ SW

CR adj to pod is completely
gone to pale gra flakely sericite

Veins gen in fract networks
samples TOK1, TOK2

PARTY CHIEF

WEATHER



1360 5/2800 Subk head west on contour
100 possible 7c of Tert or Cret
vesic. bas. and, slt gray

172 Rubble of T9 "gtzite" with micac.
partings

The gtzite is act. feld. gtz eye
rock - rusty w/ing - tuff?

180 etc - good but rubbly

5/2800 some is white gtz (minor fs) ppy
(rhy?) TOK 3

some is hornfels - but has gtz
eyes - act tuff? TOK 4

some "banded" & highly felds-

pathic

all pyritic in varying degrees

mica partings 115/37NE TOK 5

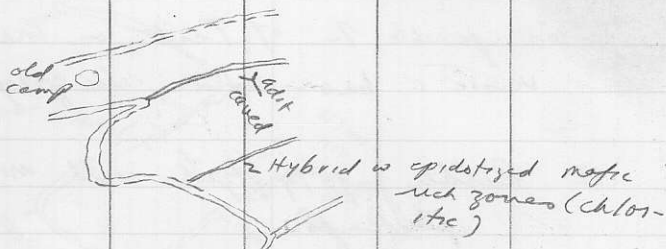
Following ridge 030°

Dk, meg - rich aug pyritic bio. fls
seen but only in float

Then chloritic zones occur but
are recessive TOK 6

PARTY CHIEF

WEATHER Local gtz veining



Qtz eyes are not gen. abundant but
almost always are there
2-5% usually

E1 3100 Good banding + f.lk 100/23SE

TOK 7

etc ends E1 3125 - no more sed
rubble after 3100

Road E1 3360

Back to upper adit road

Stan looking at lower adit (TOK 10, TOK 11)

next road above upper adit

Hybrid foliated mafic \rightarrow chl

E1 4000 Subok rubble represents etc ?
of alaskite cuts dioritic CR

along road 55 pieces veins of eg
spec hem 2" - 10" wide

(cal copy) in fr 070/80SE 2"
pods 130/60NE 10"

TOK 8

road ends 20 pc on wd massive spec
TOK 9 spec + CR
spec on fr periodically along rd

Went down toward Spences Bridge from Cache Creek + started to check rx along the Hwy south of the overlook of Lornex Pumphouse.

Cliff Exposure - largely green Qtz eye feldspathic volcanic rock with felds. lap tuff zones + 1st layers
1st is black carbonaceous often very thin bedded. locally contorted, locally with silic. lenses + layers (organic origin?). Often cut by calcite veins + generally sheared

I think the rx are like those below the big slab across the River is Nicola Volcaniclastics

* 1st - NO FOSSILS FOUND -

Beds 115/40SW (approx)

2 "conodont" samples 79 Hwy 1

Km 1033.5 Larnex Pumphouse overview

qtz's are gtzs - fields dark green ppy to
frag volc. (like Promontory Hills) - cut
by shear zones + locally bleached,
pyritized + made into gossan.

Gossan in shear zones

160 / step

sample

020 / 60NW

HWY 2

Km 1037.5 Qtz veined (carries py / minor cpy)

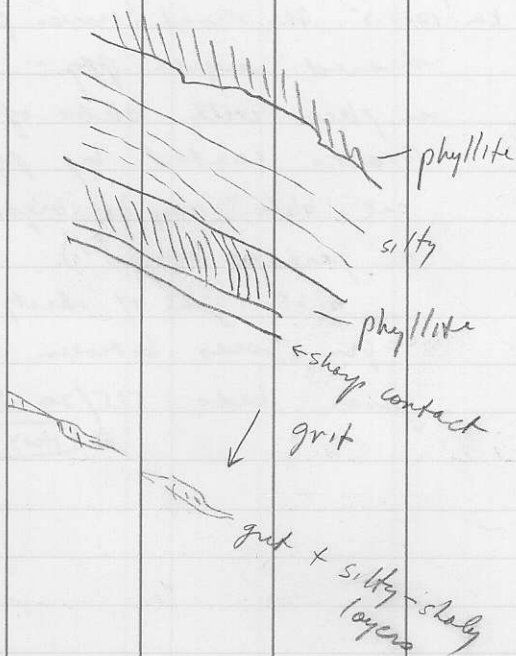
sheared augite ppy - looks frag
in places with blebs of caliche.

Fract. coated by py xls. The

cal "blebs" may be organic remains
or perhaps amygo(?)

a .5m zone of cherty shale to
the gm side between aug ppy layers
gives beds 175 / 20 W (cherty aug)

HWY 3



Tour with Paul Schiziana - SW of East
Barriere Lake,

Black Phyllites with local silt + grit
(gtz - rich) layers.

There is a good cleavage - subpar.
to beds + an excellent pervasive
NW plunging, upright con. clear.

- ① cleavage lower & than beds i.
Bed inverted?

F1 strikes Northerly? Low &

Beds 146/34NE clear. 17E/347
180
167

- ② Some cleav / bed relationships

PHOTOS - graded beds

cusped sole marks (poor)

TOPS DOWN (inverted)

- ③ Δ513 pyritic thin bedded chert

000/90 cut by green gtz + fields.

dykes or are they tuff layers?

silt + grit layer shows flame

struct w tops west

sample for radiolaria

S14 Green to red ribbon chert with
argillac (now green, chloritic) partings.

sample for radiolaria

Beds northerly / steep

S57 Argillaceous chert - local grit - possibly
tops upright (beds N / ~60 W)

'grading' up-ups(?)

oriented sample for tops

sample for radiolaria

as before all these rx are quite pyritic.

S58 Green massive felds. pyritic rusty

wtg v. st. calc. rock - grit? prob.

a tuff (mapped as igneous last year)

next o/c is felds. cherty green rock -

fg \equiv of S58? Flow? Tuff?

then a small mafic - rich dioritic
plug.

JOB

DATEPAGE



PARTY CHIEF

WEATHER

TIME YEAR

DATE

S3

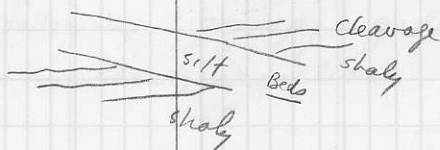
New area with Paul

Black phyllite / grit interbeds with
flat-lying normal fault & a series
of small scale F-2 folds

Oriented sample taken above
isostatic normal fault

All beds seem upright

Look NW @ vert face



next $\frac{1}{2}$ is gtz eye ppy - matrix
finely foliated Qtz ~ 3mm 20%
Some fq rock clasts — INTRUSIVE?
Extrusive? Tuff?

S8 Green finely frag acid volc - ash flow?
gives way to black cherty arg - no
possib. of tops.

S129

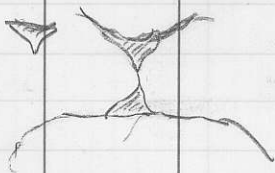
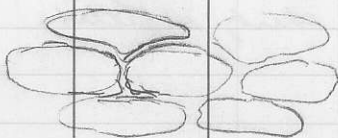
Then diorite in "contact" with gne
felds. wacke & chert (like that seen
this AM) - may be contact altn halo
or diorite (exposure poor)

Continued onward to an odd trap rock
with chert (arg) volc? frags in a
fg cherty matrix. matrix 75% arg
local silty bedded zones
Stamp origin?

Then to Enargite (?) showing

Quite a bit of trenching + several
add's following gtz - py - galena
veins in cherty argillite

ideal (not seen)



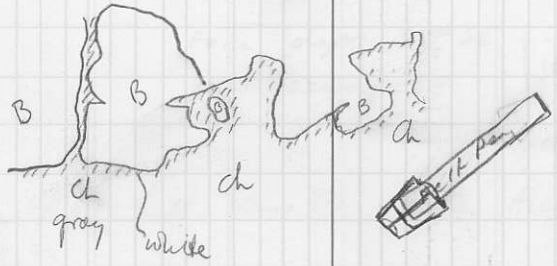
Cloudy, Cool

Tour of Fennel Op and sedimentary package south of Barriere River with Graham McClaren.

Mc9

etc on Hwy of interbedded basalt + thin to thick bedded chert -
 Have impression that tops are NW -
 much structural action jumbles bedding Beds NNE / steep NW.
 "Flame structures" say tops NW

Two PHOTOS



Mc15

stop 2 Canyon - pillowed basalt
 (Creek Valley) TOPS difficult - Beds NE / steep Fr clear. ^{SEAST}

Possibly tops west (unsure)

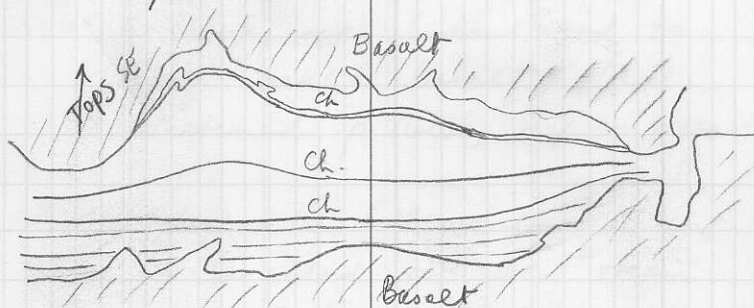
PARTY CHIEF

WEATHER



Δ Mc 11 about $\frac{1}{2}$ mile up creek - chert layer
 in basalt bxt d + disrupted -
 beds $\sim \perp$ to fr cleavage
 strike N dip west (steeply)

Flames + disturbed beds suggest
tops SE



Face dips 35° SE
view looking SE

idealized sketch

Δ Mc 4, 4a up the hill along the "Free Access" road

chert - thinly banded
 115° / steep NE

Further up hill chert - nearly
 massive loc t. b. 028/70NW

New area

△
M^c47 Sed. rx south of Barvere R.

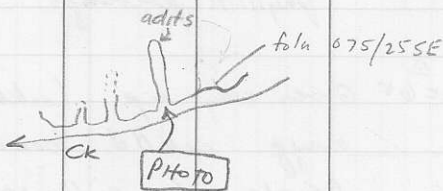
Mil Lin 016/46 in thick bedded
to flaggy red pure quartzite with
phyllitic partings.

△
M^c65 Gives way up Lookout road to
amyg retilled basalt - local
flattened pillows, map as greenstone

△ M^c66 Higher up the hill we saw a neat
qtz-cemented volc bx - steam
explosion? Frag. to 4" but shard-
like shapes

2 PHOTOS

- END -



Locally have white gtz bosses
 X cutting foln

Pyrite "loads" carry gtz + a carbon-
 ate (ankerite?)

Going to CC, Rainbow, Copper Cliff
Showings in Birk Creek

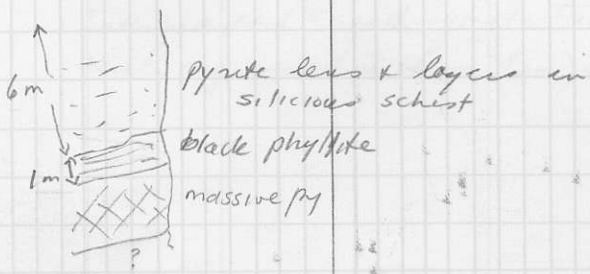
s53 Sericite schist - gtz eyes, gtz -
rich layers are highly pyritic.
foln out by crenulation cleav
(S1) (S2)

RAINBOW SHOWING

Old adits drifted on massive pyrite
(cpy? sphal?) zones in quartz mica
schist (schistose gtzite)

Foln 030 / 20 SE
(Bedo?)

CR has 1/8" beds of pyrite in
gtz-rich lamellae.



Trench below road - CC Showing
sericite gtz schist with py-rich
& py-gal - spy(?) layers. Occ in
in a trench

V38 on the way to Broken Ridge
rusty zone with lenses of pyrite-
gtz - locally the lenses are appar-
ently, clastic with rock & py-rich
clasts

Foln dips southward ~40°

Broken Ridge Showing
Pyrrhotite-Pyrite thin banded gtz calcite
sericite rock - skarn?

Pyrrho/Py in lenses along Fch.

Rch dips SWd ~35°

Interbedded with gtzite (alcalareous)
local mag-rich (partly → hem) lamellae



May Showing

CR pyroxhate - pyrite brg calc silicate
 "Skarn" (actin. - cal) and dk green
 mag - pyroho - actin(?) rock.

grey struct up section the rock
 looks like^a basic volcanic albeit it
 is schistose.

Cpy - pyr. veins @ low \angle to
 schistosity + cpy on fractures

above is a cg gtz eye micaceous
 grit

LUNCH

Harper Adit (H)

Folk/Beds 140/255W

CR silic., gtz eyes but chlorite
 also - rel. more impure than
 rx at Rainbow/cc.

above the adit there are rusty
 boulders of py - pyroho - cpy
 with gtz knots. Knots have gtz
 \pm cpy \pm hem (after magnetite).

Harper

Local rounded chloritic rock frags (?)

The cr in the adit + above is fol.

schistose + very pyritic (bedded).

Harper 2 (H2)

Second showing further up road - clearing

Boulders of pyritb - grt - chl - py -

cpy - note - silvery mineral with

"neotocite" - what is it?

Cpy often in scattering veinlets.

Looked for two showings at east

end of N. Barrere Lake but did

not find either.

- END -

Enroute to Merritt, took side trip
to see the Homestake deposit.

stop 1, Small lake enroute -
gritty + silty phyllite with
gray quartzite interlayers.

Clear. 129/50NE Beds? 110/70SW

Later x cutting gtz veins

Fold - phase 1 - see
Stan's notes

PHOTO

ART SHOWING

Small adit east end of lake -
pods of py + galena lie in a
rusty ankeritic bx zone which
is cemented by white gtz -
some pyrite in cl may be
primary but the gtz x cuts
The bx zone is locally vuggy
& py + gtz xls occur.

Galena fills late stage
fractures.



Look N, ^{sub}vert face

Honestake

Following road up - rocks are mainly
 phyllitic to schistose ^{qtz eye} & sericite - gtz -
 pyrite rocks - some ~~&~~ more massive
 lenses to 4", most finely laminated.

up the road, start to get greenschist
 interlayers.

All bleached + wstky.

Qtz eyes 1-2 mm.

Fol ~ 30° dip into hill, crenulations
 upright.

Going up, there is more greenschist.
 schist + the rock weathers as
 if it were more massive. Local
 galena long gtz veins at low \angle
 to cleavage.

The road ends at a creek and
 two portals can be seen
 across the creek. PHOTO

The qtz bosses carry antenat, have
dissem + veins of pyrite locally +
very minor cpy (mel) and galena.

PHOTO OF SETUP + OF X CUTTING
QTZ VEINS.

Sten found one piece of cpy-gal
massive menzgn + a boulder of
barite in the ck.

The barite is banded + has
dissem + fr pyrite + some galena.

Barite from underground!

Just west of the old camp is a
dump area with silver sericite
qtz schist with banded barite-
galena ^{pyrite} as well. The relationship of
the two is unknown.

Bull qtz also present (often w pyrite)
minor cpy.

Cloudy, showery

stop 1 Small etc N of road - green plagi and.
79-WM-1 plagi greenish white 2mm ^{to 3mm}, 15% - 20%
some gt^{ep} veining

upper half of etc is similar rock
but with lg frags - in places it
is a good fragmental (pyroclastic)
in others a flow bx (?)

Cleats in bright grn zone (chl-ep
actn) were chloritized.

Debris suggests bright grn zone
strikes ~075°

sub'n frags 3mm → 2cm (most
≤ 1cm)

79-WM-2 Scruffy pebble-cobble /st silic.
nodule rock - sheared ("silic. nodules
are largely and. frags).

"folw" - pebble frame, rock layers

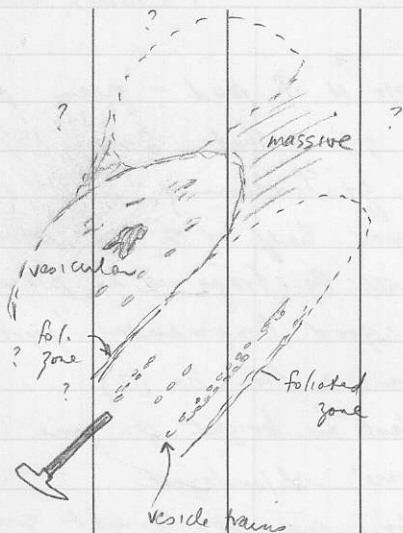
028/70NW (PHOTO)

one boulder shows well rounded cobbles
& less rounded pebbles in lmy
matrix - conglomerate - (PHOTO)

- seen in de near east

PARTY CHIEF edge of lmy zone

WEATHER



Trace on hillside ~ 000°
 well banded bx - cgl
 ~15m wide here



zone
 7m non-calc
 bx with
 pebbly chl.
 matrix pods
 rounded clasts, calc
 matrix
 angular clasts, calc
 matrix

East of the amy zone is highly
amyg (20-25%) green sl. pyritic
andesite

cut by qtz - cal - ep veins
to D. 5 m width

Some 1st pods in the lava

- climbing up -

apparent elev 2460'

Pillowform structures (vesicle arrange-
ments also suggest pillows) in
the flows Bedding inclined 025/50NW

Two PHOTOS

Vesicle trains v. common in the
amyg apple green andesite

following edge of qtz up + NE

foliated calc. zone 003/67W

004/53NW

actually the edge of the pebbly amy

bx → cgl.

at E1 2540 contour eastward

* lat as lenses in the bx ca 6cm x
1cm overall 15% of rock,

100' west - rock is sheared mica gn
andesite with folded - looking gtz -
epid veins (could be lenses ~ 1m wide)
Rock v sl. pyritic (plag) dk ol. gn
(page 0)

Talus - mostly sheets of
greenschist

page 20 - some fairly pure gray
1st float

50 Sheared apple gn gtz - ep veins +
also schistose andesite

some seems to be epidotized sandy
andesite tuft with calate veins
+ pockets. O/c too poor to show descn.

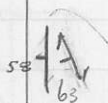
loc highly amyg (chl - cal) zones
schistosity poor not sure of
orientation.

67 prob O/c - chlorite^{ep.} schist often
andesite

Plot 133/555W

87 fairly gang (chl, 20%) apple gn and.

Fair sized O/c - not schistose



79-1 No kspar
 Flattened fol. sheared
 ranked and. top. tuff
 mylonitic?

Fold closure to
 the east

120 ridge ofc - v/c w. limy pods ~ 030 / ^{steep} NW
could be veins - carry ep.

+ qtz lenses

———— more ofc to east but head
down ridge —————

Impure 1st layer 008/48 NW
2½ m

East of it, the rx lks vaguely
pillowform

Σ 2240 Foh 158/48 ^{SW}
page 191 rx much better foln - possibly
derived from and tuff - color a bit
different also (different shade of grn)
Foh 160/55 SW

1 Angling SW

Σ 1 page 250 Bluffy ofc east edge
argillite (?) lenses in kink folded
schist
kink - axis 152/55 AxSurg 063/60SE
arg 000/58W foh 173/63W
and tuff (scattered lapilli) OR?

Sample 79-WM-1

2a

Sheared out amp andesite
blasto-mylonite?
No Kspn

2b

Epidotized ^{chl} gneiss

280 Schest gives way to schestose
green andesite

El 2040 pc 460 - TRUCK -

Drove on a bit - LUNCH -

79-WM-3

90% of gtz fs chl bio. gneiss - well devel.

lensy foln; chl on fr faces - ep. etc

Foln 082/435E (difficult to
measure for some reason)

malachite on fr face

gtz - chl (chamosite) - ep veins

sample 79 WM 2a

To the west the gneiss derived
from andesite gives way to
^(gd) granite gneiss the foliated
gd. (sample 79-WM-2b)

near the contact, volc CR in-
clusions in the granitic gneiss
are abundant & mafic rock ~~is~~ segre-
gation may be assimilated
inclusions.

Leuco zones x cut the foln.
laumontite in young cracks

3a

No Kspar
Bxtd (tectonic) pyritic
andesite

3b

No Kspar - pink plagioclase
Dull green partly devitrified
dacitic andesite
- sheared
mylonitized?

Δ79-WM-⁴/₃ Foliated greenstone - areas between
phyllitic partings in green and
looks massive.

- calc.
cut by Qtz - mag + zeol veins
color layering in phyllitic zone 110/82N (wavy)
Foln in gneissic zone
073/67NW

Gneissic zone sep from phyllitic
zone by a shear || to foln.
Small faults offset foln + foln
is wavy (larger scale effect of
wandering episode?)

Epid / chl altn + fr

ax surf of "waves" 005/40E

Zones 3-4m wide are intensely
epid. altered (⊥ to foln)

pyrite "halos" on veins at west
end of Qtz. West end has subhedral
mag. dissem in rock + well developed
chlorite segregations.

Some Qtz - tour veins

Samples

79-WM-3a

79-WM-3b

[4] float Holoxilue grn
 epid. plag and
~~ksper veinlet~~

[4a] Dk gray-looking (ksper)
 veinlets cut dull ol grn
 andesite (Holoxilue, almost
 microdiorite)

[4b] Epid alt & veined andesite
 dk grn
 ksper fr?
 like 3b but not foliated

5
Δ 79 WM 4 Going out to The point

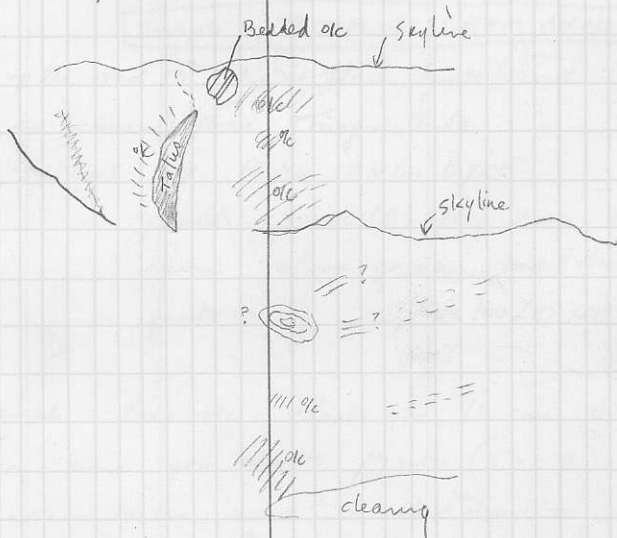
Revised green sl. pyritic andesite -
matrix now totally finely xllne.

could be called Microdiortite

Toward the pt, the rock is more recog-
nizable + is a green, altered revised
plag and. (bc)

Sampler 4a, 4b
float +

Binocular survey of north-facing slope over-
looking Nicola Lake



1771.65 Mont Peak / Logging road junction
1771.9 last stn

PARTY CHIEF -END-

WEATHER



Possible trap clump: 015°
 Edges of many clests have been
 altered (bleached)

PARTY CHIEF

WEATHER

1809.0 El 3500' Swbk x rd fu.

1809.1 Δ 79-WM-6

Lt gray w/ty epid nodule (white envelopes)
 v fg like gray rock - mod. mag - brittle, rmp
 like glass when bks - devit zones suggest
 flow layers, color gray-grn
 epid + ep-pyrite fr. Dacitic And.?

Devit zone 026/355

Sample 79-WM-5 CHEM ANAL

up the road 50' - local black spots (some
 ep cores) are magnetite -

CUT BY PLAG AND. DYKE

ep altu per. (2) plag 2mm 20°

now olive green matrix

matrix fg Dyke 100/81 NE

1809.3 Trench - frag volc - clasts grn, dk grn, dk

gray, some grn clasts pyritic (5-10%)

matrix looks "acid" is shot thru w

magnetite - clasts uneven edges subsequent

minor qtz or R

Most 2-8mm

Dacitic-And Lap Tuff

PARTY CHIEF clasts 60%

or volc box

WEATHER

matrix clastic many clasts are
 < 1mm dacitic

~250' ^{Ang} 350' from trench is south edge of the
frag volc unit - here it is more
basic-looking + more epidotized - possibly
a few ep. clasts

gives way sud to plag ppytic olivine
green (grayish) dacitic - andesite.
Epid altn + fr.

→ 1809.5 road N-S Brg of side cat trail
320°

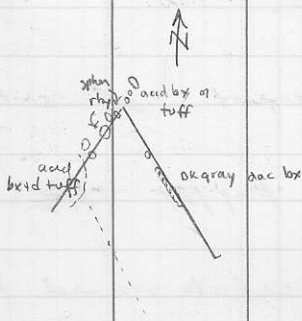
pc 31 Epidotized plag ppy - dyke?

pc 35 Epidotized calcite veined dk gray
frag volc. Ep & clasts mainly
Rock looks andesitic but has some acid
pink laminated (flow banded) clasts
Carries plag ppytic clasts (like the dykes)
also. w/ly magnetic

Clasts mostly 8mm + less - plag ppy
to 2cm.

Higher ~60pc 15% frags 2-3mm often acid
looking (pinkish) Frags 60? Ep clasts
3mm - 3cm, 15%. One acid frag 12cm.

- (6) Brown mafic plagioclase -
ep. altn Kspar veinlets.
in matrix + after plagioclase.



- (6a) Gray grn dacite + chlorite
frag acid L.T. Kspar rich
clasts float 2-8 mm avg 4
clasts common but may
be secondary Kspar.

- (6b) No Kspar spherulitic
felds green dacite

PARTY CHIEF

WEATHER

66 pc pale ol. grn chl - epid (mod) cal
 DYKE/ veined plag ppy. Plag 15% 1-2mm.
 70 o/c ends trail continues
 (A) → white fg acid tuft - like stars saw
 plag-mafic dacitic and.
 pc 95 Bluff o/c's
 Δ79-WM-7

Sample 79-WM-6

at the last
 o/c but not flattened

elsewhere has grn chl.
 Frags - flattening o/c / ~90

(A) gray grn chl - cleft acid tuft - clefts
 1-3mm, not crushed sample 6a
 felds + fg at NW end of o/c

NEW BRG ~~040~~ ^{220°}

pc 94 coarser, elong frags, flattened
 acid chl cleft o/c bx
 ep. clefts or clefts? sample 6b
 matrix pale gray vfg silic-felds

pc 11 felds. soda rhyolite - corona text
 ep - gtz - mag (→ hem) clefts.

21 Simila but fs aligned? in layers?

35 pinkish granular matrix chl mafic
 (46?) plag ppy



bc Ok turquoise gray mafic pyrite
dac. andesite? Seems to
carry some Kspar in the
matrix.

40 plag dac. dyke

42 Acid rock - wtd surf shows frags 1-5
 can common - miken face see lg clasts,
 aligned 1-3 mm silic lt gray, chloritic
 in a white feldspathic matrix.

Acid Tuff

LUNCH

new bog 290

005 New rock type - contact 2007°

Rock is dk gray andesitic epidotized.
 ?SILL?

20 Frag volc - dk gray-grn, epidotized,
 then a mafic grt fs dacitic looking rock.
 overall med-dk gray - becomes paler
 green + more ppytic a few ft uphill
 DYKE? quartz xls small.

Seems to have a chill contact
 + run ~ E-W

pc 30 CR to ~~west~~ ^{south} is dk gray dacitic and.

Sample 6c

50pc bluff of Frag volc sp clasts
 dk gray wk-mad mag, feldspathic -
 clasts diff to see but wtd surf suggests

6d	Bedded of a ltn green volcanic fragmental Immature coarse - fine volcanic sandstone some reworking but frag generally fairly angular.
----	--

- 50% subfr. to subbed 2mm - 1cm.
 @ 61 pc there is epid siliceous tuff on one side + plag dac dyke still on the other.
- 65 Amyg (now repl. by epid) dk gm dacite
- 68 Dk colored frag volc again - strong ep altn but looks fairly acid.
- 72 Rhyodacite epidotized volc
- 86 Grn + pink (Kspar altn?) volc bx looks acidic
- 100 - Either epidotized chl dacite or a ferely frag volc - fawn dacite
- 107 Gray dac-ard tuff - frags to 2mm densely packed. Looks like lots of fine pumice frags (gray)
- 111 cut by fs ppy dacite dyke → crowded ppy 10' from contact
 090/subvent 35' wide
- 128 Gray volc frag st. coarser here

sample 6d

6e

Dac And like 6c

Ep. altn zones may carry
some kspac (stain)

141 pyritic steel gray plag pyritic and

6e or dac and - if you coarsened
the plag & blew it up it would
be like my Iron Age "Andes Cone".

Plag 12%, 1-2mm

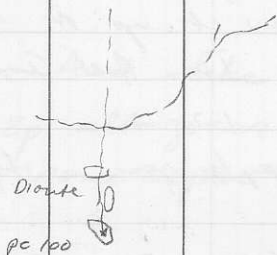
150 non-pyritic zone - vfg holoxitine

157 vfg dk gray snap spots make
it strongly magnetic
andesite?

161 Gray Andesitic frag volc again
clasts gen. 1-2mm 50% matrix
alt-size ~~grayish~~^{grayish} semi-translucent
when wet (could be dac-and compen)

177 near top of knoll - wtd face
shows probable 1-2mm clasts
50% angular subsequent.
Continues as dk gray red
basic (dac-and? and?) frag volc.
some acidic some basic clasts
locally pyritic quite magnetic

DYKE continues - form the
highest knob.



7 Rounded (saussureitized?) mafic
 (were pyroxene) and subhedral
 plag phenos lie in a vlfz
 plag fs - Kspn matrix
 phenos 70% mafic 3-4 mm
 plag 1-5 mm
 (avg 2)

206 Peak - gray flow rock in part and.
frag volc in part
Plag Ppy dyke 150' thick west side
of high ~~top~~ ^{point}.

new brg 180

020 other pinkish plag ppy dyke

040 Black pyritic "and" bx

050 " " " "

070 Black subconch fr - looks like fg (are
but careful look shows ^{its} frag nature

080 Bio Hb rubblely 9c in valley of
fg Bio Hb ~~Diomite~~ or ~~Diomite?~~
mag - rich strongly mag.

pc 100 new brg 090

108 9c

128 9c Δ WM-79-B Sample WM-7

Primary mafic mineral is (or was)
augite.

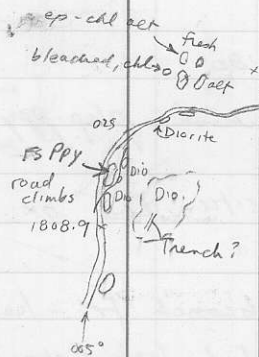
151 Diomite

180 50' ^{North} ~~East~~ of line Diom.

85' " " " Contact trends

PARTY CHIEF ~105° E13860'

WEATHER



8 lost?

The rock ~~is~~ north of the contact is very fine
microdiorite (altered lava probably)
- does not look fragmental

35' from contact is no longer well/d
235 small etc pinkish ~~frag~~ plagi (10% (max))
dacitic rock - dyke?
Ep - chl alt-

300 predom. plagi dac. dyke ~ 250' above
truck.

measured ~ 100' wide

all dyke

Flow banding well level @ ~~west~~ south

side trends 170°. Are these

extensive Ξ 's of dacite dykes?

↓

acidic bx above the road
cut by dykes

then to green chl frag.

— Road S13600 —

continuing

1809.8 Diorite

.9 " gives way westward to

pinkish brn plagi dacite (dyke??)

Diorite cut by leuco pink syenite

PARTY CHIEF Strumpers

WEATHER

Sample WM 8

strong mag

epiditized
wade

9 fg version of 7
Drouete

18.10.15 Road - diorite

across the mount - western side - ore

no epid pink alt chl. diorite ^{angite}
 less alt zones here have eg ~~angite~~

phenocrysts in the diorite.

qtz fs interstit $\leq 10\%$

sample 79 WM 9 Dio cut by

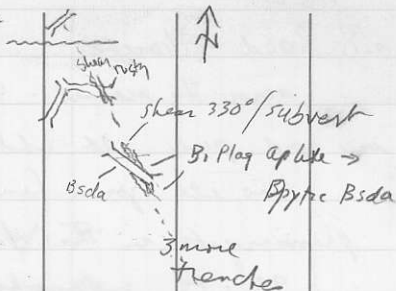
pink fs ppy dyke

-END-

JOB

DATE PAGE

Trench 5-4



start SV5 El 4500'

252E Trench 130°

Plag - mod arg. actn - intense on fr

Bio - fresh to chloritized

Fr faces coated with zeolite

Mal in shear zone

mal / chrys. / act in gte vein
mat'l

5-4 Amphibole dyke + Bsd -

loc grn ser alt

zeol

Caum fr

- As Ppt - Cities Service

Drilled in Skuhren Ct

Went north

Trench 5-6 635 m South of dump post

Rock is closely fr Amphibole alt

zeol fr

some mal-coated fr (w. gte)

minor sericite actn

other areas "fresh" with mal-alt

br or fr

JOB

DATEPAGE

EDU LIUGARD



PARTY CHIEF

WEATHER

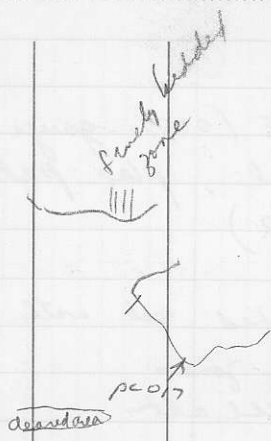
Trench 5-15

cut by NE (025) gauge zone
Bsda chl, plat pale gm
(see 2)

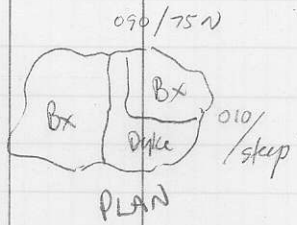
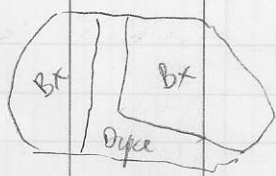
5-16 Smashed rock with N50W to
N50E gauge zones
chl alt

3-1 Claim SV3

Boulder fill (stream origin)
No o/c Mentzd boulders



10 Flattened well layered clasts float dk colored sl finer version of 6a



11 vfg dk gray mel Kspn - rich dacite

PARTY CHIEF

WEATHER



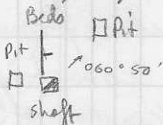
Going to Chase Showing by MLC
(Northwest of Merritt)

strong wind, cool

1st on road carries much organic debris - possibly the rock represents mat'l beaten about by waves (all org. mat'l is taken up)

Chase area
East of the 1st (which is cut by play dac dykes) is a dk gray welded tuff Sample 79-WM-10 - feldspar grains 1-4mm long, 1/2mm wide

Plz Pz Ep vesicles



pc 017 acid basic volc bx or L.T.

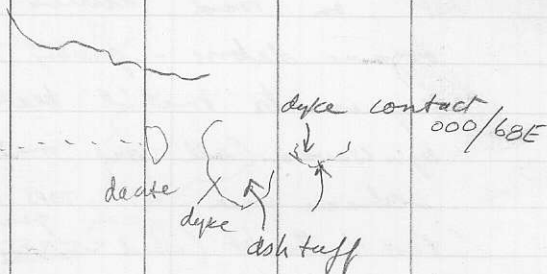
Epid alex of matrix (2)

027 Bx cut by dk gray lg dac and dykes

Sample 79-WM-11

Bx cr to flattened lapilli tuff (pumice)

Flattening 023/61 SE



[120] many chl clasts, many K-vedr
 clasts
 like [10] but finer grained
 ash tuff
 Rounded knots of Kspar?
 altn

[12] many reddish frags, felds
 patches epid alt no Kspar
 acid + chl + basic? Frags
 Perhaps akin to 10

sidehilling (+ clamber) contact
 most talus is all mafic plap (1 mm
 10-20%) brownish → pinkish gray dacite
 dykes

9c - large - pink alt (Kgar?) epidot-
 ized pinkish brn dac → dk gray
 dac. evd. - fg dk gray strong mag

pc 100

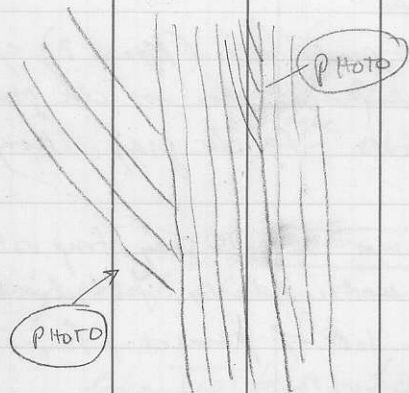
Sample 79-wm-12 DK gray frag volc - clasts
 avg 1mm matrix dusty, felted - looking.
 Clasts - lots of pumice, fs, some
 pink vfg volc.
 new piece

pc 16 "dyke" cuts similar felds ash
 tuff avg 1mm + less

East edge of dyke (sill) has flow
 laminae, epid alt + is finer
 grained than matl away fm contact
 - sl. coarser pumic frags higher up

28 ~~Sepan~~ Sugary text pink alt
 dac dyke ~ 15 fwd
 then tuff is 5% pink clasts to 8mm

129

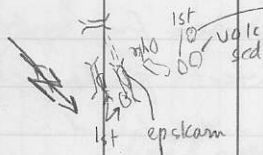


uphill -
 cut by dlc
 gray fgy
 loc pyritic
 dac and
 dykes
 ~ E-W

almost looks like Jurassic Gwke!

13 Felds Gwke - reworked, fs-red
 beds ~ 1cm wide lots of k-rech clasts
 derived from xl tuff?
 on the way back - found trenches

trend 010 with 1st then
 seam with cpy blebs (pc 31)



pc 100 Price Cleared
 area
 150' below the
 trenches E big
 ~ 215°



pc36 000/77E cherty thin banded
silic. zone

moved up hill - dk tourquois blue aug
plag dac - and. to west is crowded
aug plag ppy (gfs - ep amyggs to 8mm)
then amygdaloid dacite then
smashed-looking plag ppy again
(looks almost like X tuff but
amyggs confusing)

Dacite has chert contact

45 Bombs to 20 cm (avg 5cm) in
plag rich tuff matrix

47 The unit is bedded
here X beds or fault?

cut by 5' dyke 070/65N

Sample 79-wm-13

To the east is aug plag ppy
sill?

then more ^{pebbly} felsic volcanic sst

E-W dykes ~ 25' apart

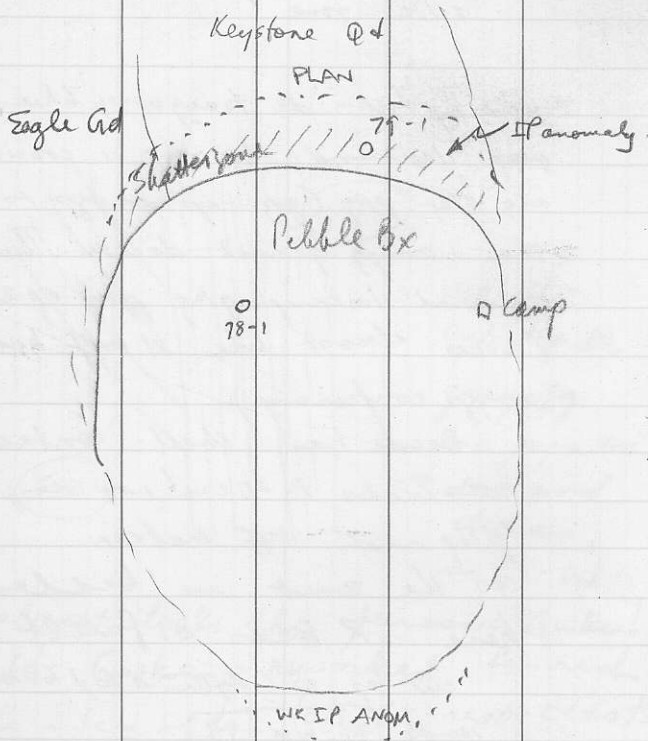
Heading west again

~ 200' over is ^{courses} of fex volcanic again

dk gray dac dykes

PARTY CHIEF W. R.

WEATHER



PARTY CHIEF

WEATHER

JOB

KEYSTONE

DATE

24/6/79

PAGE

41

Access Merritt → Kingsville 31 km

XL → turnoff (just across bridge)
4.4 km

Turnoff → airfield bridge 17.4 km

Bridge → Camp 6.6 km

60 9/8

60-1006 Eagle Bx + P. b.

1006-1625

Keystone Qd + pebble bx (all
Keystone)

Bxt d

Stockwk → milled

[→ 1406-1624) milled Aplite Bx

1625-3531

Stockwk

KQD

Pyrite fr silica envelopes

MoS₂ + Qtz frMoS₂ fr

3386-3399

(13') QFP not smashed, fr with
MoS₂

3399-3531

Altered Rock

SiO₂ + sericite alter

Stockwks continue

Some epidote

- EDH -

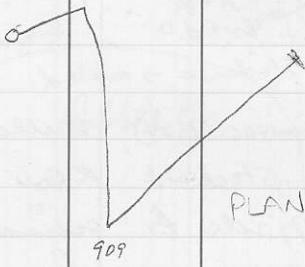
PARTY CHIEF

WEATHER

wade

JOB

DATE PAGE



Section



PARTY CHIEF

WEATHER

~3500 altn white
 grn
 mafic → ser
 some second bio after
 primary & lensing gtz veins

Veins - pyrite
 - gtz MoS₂
 - anhydrite (pink)
 Banded gtz - MoS₂ - pyrite
 ser altn (phyllitic)
 - Qtz - py - sphal all x/line

Better zones
 of Mintzer

White Qtz eye ppy (minor
 to phenos) has MoS₂ minor
 ser on Fr. Dyke - not
 Bxtd

Hole dips 52° here - many Fr
 30° → 10° some to 45° to core



JOB

DATEPAGE

PARTY CHIEF

WEATHER



2865 area intense argillic (white)
 and wt sericitic
 veins py-gtz - MoS₂ - (siderite)
 gyp - anhyd - py

about 1600 "Aplite" bx
 CR is white (leucocratic, kaol. alt)

pyritic plag gtz rock (alaskite)
 some molyb - matrix + fr but
 poor grades

Frag look like chilled alaskite
 in some areas.

near contact (1406) bx is milled
 + matrix goes up to 50%

some vuggy gtz gal sphal veins
 Intense arg alt @ contact
 + through bx

Explosion Bx of alask. dyke?

then Keystone got cut by leucic fg
 dykes - dissemin gray iron + py

~1100 mixed bx and rel measure
leuco-looking (but can see
ser after mofic) gd - almost looks
like alaskite

some bx zones have pyr. frags
Bx is embryonic → crackle →
fluidized type - virtually
monolithic.

900ish Foliated gtz - red - gtz
sphal gal veinlets

800ish pebble bx - frags of ppv, galena
"granite" ppv, gtz-py, pyrite
veins of gtz galena sphal
frags sub to 4cm avg 1cm
matrix pulverized mate 50%
local gtz - no ser frags

Near the top of the hole is crackled
Eagle Ad (foliated)

JOB

DATE PAGE

--	--	--	--	--	--

~61

2.80
3.0

4.4



PARTY CHIEF

WEATHER

CHECKING ROAD %'s ON WAY BTRK

start 2049.25

1st % 2052.05

chl schist (see last yr's notes)

avg foln 110/35°SW (contorted)

2nd 2052.35 another .05 ahead

[at 22km marker]

sheared fol semicrystallized gtz r

fs eyes sheared ruff or rhy?

2nd Ranked chl schist - looks

like it is bedded.

sample	Coq 1	semicrystalline chl
		Schist

53.4 schistose %

Passed airport

57.8 chl mafic plag ppv dyke cuts

Eagle gd 080/80 SE

Foln 170/90 v gtz rich

other side of dyke 055/90

~ 75' wide

JOB

DATEPAGE

PARTY CHIEF

WEATHER



58.2 - 58.5

Foln - "Beds" 150/30 NE

Musc Qtz Gneiss - lg beds are gneiss w
 musc partings

Metam. bedded rx - bedded
 zones 15 - 50' sep. by more
 massive gneiss

White arg sequence still
 recognizable

Beds 110/73 NE cut by
 ff dioritic dyke 4' wide
 ~150°/90

Layers are white gtz (feldspathic? sweats?)
 amphibolite

zones that look like foliated gtzite
 actually X beds + are sills(?)

or are those isoclinal folds?

NOT SURE

COQZ

could interpret megax beds
 with tops N

Metam turbidites?

59.2 chl. ep schist - after and?

COQ 3

~~59.4~~ ^{59.6-9} chl schist probably

60.0 Silic chl schist 060 (45 SE folia.)

61.0 Similarly layered (folded) (foliated)
 Silic chl schist
 derived from beaded rx
 shaly interlayers (Turbidites)

61.7 similar-looking etc's
 ↓

62.5 Driving along some layers
 small pit

some rock ^{Silic} chl schist

63.2-64.1 similar-looking etc
 (sheared)

64.45 Sheared chl schist cut
 by Qtz Ksp dykes COQ 4

65.1 Smashed looking etc again

SP 2
448
1.4



2 photos

65.2 large 7c smashed-looking
 Gray plag ppy (dykes?)
 dac and. loc amyg

large slickensided face - strike
 down face toward the road
 could be flaws COP5

68.2 Rusty w/ry lapilli tuff or bx-
 acid + basic frags (some good
 looking fol. Thy clasts)

COP6

etc int for 0.5 km to 5 km marker

69.6 Green amyg partly devet dacite
 dacite ppy (dykes?) frag volc (var-
 iety of clasts) thin layered
 rusty silic. sed.

COP7

thin 7c just off road to
 70

71 etc along road & cliffs
 west of road

72.6 across River - looks like cal
 juts in the rock - cliff etc's
 Rock in ck COP8

Km 83.1 Good road goes East

Km 99.7 In Mtn Road

16.6 km

31
04
2.7

Powerline X's road here
 79.6km COLDWATER STOCK
 north of Kingsvale - chiefly γ c
 of bio hb quartz, dco or Gd -
 no problem if want to use
 this for dating.

Rel γ c rich - a Guichenon
 type intrusion

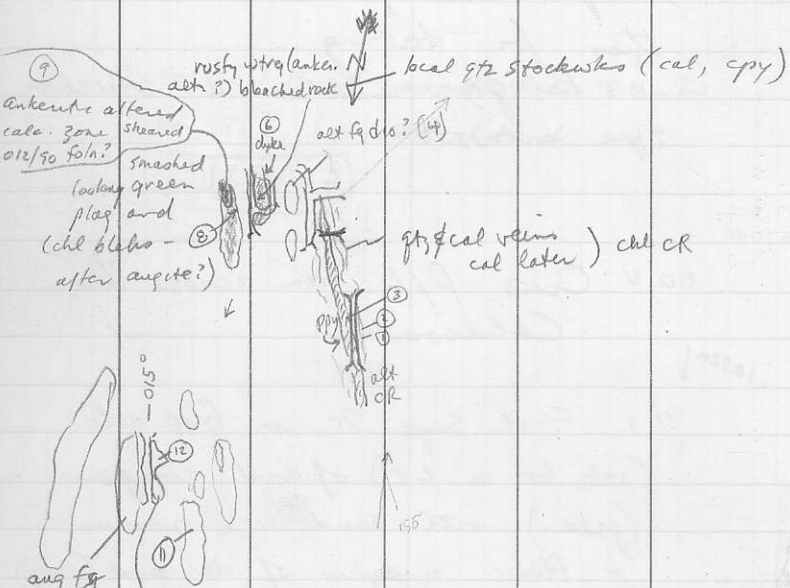
CLDR 1

80.4 Cross P/L from across the
 Coldwater

10.7km ↓

91.1 Float says γ c is frag volc
 (volc bx or LT) of and. compsn
 (green) with sand-size zones
 + flows or dykes of dac and (gray)
 and aug ppy (green)
 10% 1mm

SAL 1



aug fg
fs crowded
pry or
microdome
(13)

- (6) cuts sheared diorite (?) (?)
- (9) → (10) eastward - foln?
pyritic microdiorite
- (11) microdiorite

(12) Epid. aug pry cut by
fg diorite dyke

Sheet 2h south border - checking bedding
in central belt, lot data, fold?

△77-WM-9 Red matrix lg fs phenos → epid aug fs
phenos - red aug plagi andesite
mod few ep altn
locally trachytic texture phenos 45%

AL SHOWING 92I/50-120

2148.95 Trenches

Qtz veining with chl fr + minor
cal on fr

Epidote - magnetite lodes cut by
carbonate stringers

contact of QIP (mg gtz, plagi
crowded ppy - epidotized, gtz
veined (gtz glassy, vitreous)
contact 125/80SW

CR looks bedded but whd faces look
like diorite - pervasively alt → chl +
ep, sheared

East trenches - dry rock - aug ppy →
phytic diorite - green eye
varn cuts none I think

Continued up road to 2149.8 then
traversed westward looking for bedded
rocks

pc 50 Aug ppy - matrix halox/ho, felds =
pathic, sim. to wall in trenches
Aug 15% 1-2mm Matrix st
mrd. ep. altn wtrg color grn-wh.

Bx zone frags $\frac{1}{2}$ - 3cm 50% (one
15cm frag seen) zone seems to
go 000. Next few o/c's suggest 120°
for bx zone (problem - it is shown
by wtrg \therefore diff. to see if wtrg wrong)

65 Head N down ridge

96 Bx o/c

110 Bombs to 40cm ϕ

clasts mrded to salt $\frac{1}{2}$ in

in Bx still

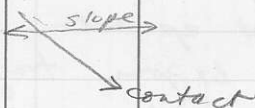
(Pitoto)

184 sharp brk in slope - head

west to large o/c

some bombs have chilled mrdos

which wtr in relief



14

Dark gray vfg volc with ep eltn
lenses + irrd spindle-shaped
magc phenos to 1cm length (15%)

"augite" ppv

tension gashes filled by
fibrous cal + kspar?

Bombs to 60cm

192 "Bedded" Cliff 7c # photos of bx

Frag along seems to give
orientation \perp to bedding in
second photo

The "beds" is a white wtrg
aug ppy flow or dyke or sill.

Cg aug xls flow aligned
aug \rightarrow 1cm aug 1-3mm

contact 105/42SW (could
have loc map effect) -

aug ppy 3m wide

Sample 79, WM 14

Further over Cg aug ppy dykes
cut the bx (chilled ^(1cm) contacts)

Frag - bx holoxilite fg
to highly amyg.

Andesitic \rightarrow Basaltic - all
one rock type essentially.

other chilled dykes

150/70SW

Locally - bombs \rightarrow Epidote

west side of \perp - finer zone with

a few ep-gtz auld bombs

PARTY CHIEF

Diff wtrg goes 010 across 7c

WEATHER

Frag along 1030/655E
045

Sample 18

15

Augite (20%) ppv - matrix
mod Kspai - rich between
fine plag laths

Heading downhill

219-225 Aug ppy - not bxtd

Δ79-WM-10

290 Bulldozed "pad" etc is rock
bx, tectonic bx (calcrete, gtz cement)
+ aug ppy, relationships unclear.

LUNCH

Prog 125° to cliff etc of Breccia

sidehill Eastward now

30 Foln 175/63W in sheared
plag augite ppy
Foln folds gtz - carb veins

↓
40 less foln
aug ppy



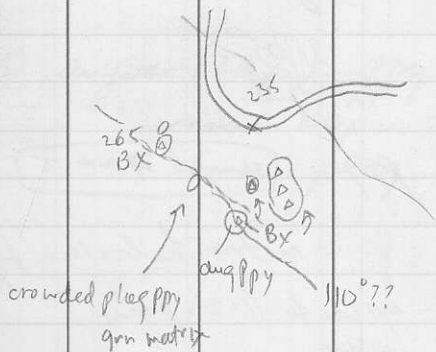
67 augite ppy sample 79 WM 15

77 " "

87 " " - matrix holox (the ff)

fs rich epidote (1-2) perw.
across valley

121 Epidotized (matrix p2)
E14100 augite fs porphyry



Head up Slope

64 Fairly crowded felds aug
(avgite 35%, 1-2 mm)

ppy Now going 105°

125 Knobs with clean + rusty zones
Clean are dykes of aug ppy
010/subver cutting pyritic
aug ppy (possibly fragmental)
much of or fr

fg zone 1' 125/85SW
dyke? segments go 020°
apple grn - dacite?

183 Leave open knob - head for
etc to south

233 Volc Bx & Aug Ppy
extends up the hill SW

265 Fence - Bx

contact ~ 110° ??

Road) new pze go ²²⁰~~050~~° up ridge
0-20 Bx - Bombs, etc

16 Frog rock - avg ppy clasts
 in bxt'd matrix
 clast borders fuzzy-looking
 Some have K-bvg grdmasses
 Frog Ppy Bx

17 nearly the same as 16 - prob
 fragmental also
 No KSPAR

18 Plog xls in K-rich matrix
 not obviously fragmental

20 - 30 Sheared to measure epid. aug
ppp.

45 - 60 locally pyrite ^{aug fs ppy -}
~~sheared~~
Xls look fractured
local pyrite fr

60 Bxtd aug ppy

75 Drill Setback hole - 60° west

100 still aug ppy - stop

moved down the road a
ways then rapped over to the
ridge westward

Bx (diff to see with lichen cover)

then fg trap fields rocks

" aug ppy

then Bx

Bx to ridge crest + sharp drop
on west (at least)

77-WM-16	Bx
" " 17	Aug ppy
" " 18	Bx

Chasing the lst
 Tree across road in fr
 start walking
 rope head west to ridge

157 Green frag volc (andesitic)

170 Closely fr green rock
 andesite?

170-200 more volc frag I think

201 fol. - looking fony zone - lony
 volc sst or tuff?

210 Matrix Purple ang → ep
 "ang ppy"

DTA-WN-11 220 Gray cal - veined lst

235 Head with on ridge
 lst lens 170°

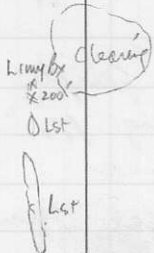
267 west edge is the bedded of^{or}
 fol. Beds 172/51 NE

280 cal veined on west scale
 mixed, massive lst

19 Dull grn aug? (→ chl)
 hematite altered
 andesite
 NO KSPAR

20 Lime cemented and. bx
 cal veins ep. altn & veins

21 Frop volc - ep veins & some kspar
 altn DK colored but prob dacitic -
 clasts take mod K stain



22 Hematized andesite



340 1st impure silty cal veneer
bedded to massive
only 40' thick here.
to the east is limy volc sst
then volc rock (fragmental?)

384 minor 1st pods in chl and calc
- cal-hem fractures

Sample 77-WM-19

394 another pod started

435 Frag volc + lime-cemented
volc frag bx

79-WM-20

To the west is andes volc
set or tuff

79-WM-21

NOT limy

460 road Bxtd volc vx

480 overlooking dropoff - frag?
volcs, cherty looking
cut by gpn plug and dykes

79 WM 22

END-

23-1 aug plag dac - and?
 No KSPAR but matrix
 dull apple green

23-2 Qtz Eye chl plag dacite
 matrix pale grn, nearly
 cherty

23-3 Green scoriae. → fg and cleft
 ash - Lap tuff

23-4 No KSPAR pinkish brn vfg
 sl. feldspathic Dacite?

23-5 NO KSPAR ^{Matrix} Clasts pumice (flat-
 tened) scoria fg + some
 clefts are bleached versions of 23-1
 The clasts large are > 5cm.
 + sample east of 23-1 (TOPS EAST?)

23-6 Calcic amyg dk pink NO KSPAR Dacite?

PARTY CHIEF (24 on next page)

WEATHER

D79 WM 12
stop 1

% of pale green gtz eye rhy.
(or rhyolite) west of road interlayered
with acid tuff (see Stan's notes)
east of road is mixed ^{basic-}acidic tuff
(gtz eyes)
augite ppv andesitic tuff (feldspathic)
- lots of scoria frags - pinkish brn
felds. dacite. samples 79-WM-23

* gtz eye rhy loc bxt'd (flow bx?)

79 WM 13 Pyritic sl calc (fr?) andesitic
chloritized frag volc?

Further east (50') it is similar but
the matrix is limy - locally looks
bedded - Green limy andesitic tuff.

ridge of rhy trends 167°

Fract clear? 013/65 NW

79 WM 24

Park truck head eastward

pc 27 rusty w/ty formerly pyritic -
looks acid (bleaching in part)
Wood surf loc looks fragmental
gtz veining Pyritic dacite?

(now amygs)

24-1

Scuraceous h x td flow

top?

cal - chl amygs

40%, $\frac{1}{2}$ -1mm

2

24-2

cal veined lamonte alt
pyritic sheared rock
calcareous tuff?

25

No Kspar green; - cal-py-ep
veins + pods
Frag volc?

pc 62 Chl muscovite loc heavily pyritic
 (to 10%) + pale gm w/fg zones
 (sheared, bleached zones)
 pyritic zones are pale apple
 green fg feldspathic - odd.

84 small etc loc heavily pyritic + py dr
 gm-wh w/fg pale green to pale gray
 sl. felds. dacite
 phenos

122 Green calc veined + fr play and →
 ↓ frag volc with limy cement
 Limy Tuff for the most part?

140 Limy but possibly tectonic - calcite
 cemented pyritic gm andesite
 → limy matrix volc bx

160 limy matrix sheared - looking
 green, volcanoclastic or sheared
 out any py Sample 79 WM 25

176 old road N end of swamp

26 amygd. dk green finely
 aug plagiopyrox andesite
 augite andesite
 NO KSPAR

27 Dk green round amygd. (chl?)
 with wispy halos in dark
 dull green matrix
 amygd. augite andesite
 NO KSPAR

28 Amygd. dull ol. grn andesite
 NO KSPAR



Δ 79 WM 14

260 amyg (calcite) green vfg andesite
 (hem chl) qtz - ep veined
 vesicles (amys) spherical

Brq 350°

pc 312 Same vesic end. but here it
 has 5% 1-2mm aug xls

Sample 79 WM 26

383 Massive + highly amyg aug ppy
 ↓ olive grn granular matrix

400 amys chl - cal

405

Sample 79 WM 27

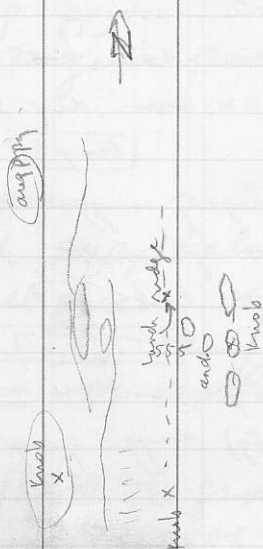
augite phenos are not staked up

422 Sandy (vfg) amyg grayish → olgrn
 andesite

79 WM 28

452 ol grn sandy-looking augite (5%)
 amyg → vesic andesite

476 Valley - volcanic bx-grn - rusty
 wbrg - frags inded to sub 1/2
 1 or aug, loc to 5cm, 50% matrix
 wtrs out qtz cal veins in fr



1m I } vent fra
look east

502 acid frag volc - matrix (mass grn,
felds, Clasts green gray pink mas-
sive to scoriaceous most sub 1-2cm,
clasts 40% wtrs pale grn.

open to partly filled by qtz, carbonate
by silic. it is wh - rusty, wtrg epid. felds
cherty-looking bxt-d-looking soda
rhy. (no qtz eyes seen) - Lots
of qtz veining.

interlayered w. acid bx

535 Hectop

Ves - amyg (cal - hem) dk gray and.

555 Dk gray sl plag pyritic andesite

583 Even finer sl. ltr gray vesicular
(flattened) and or dec. and.

600 ~~is~~ Acid Bx on south - going north have
silic-looking resistant "beds"

135/80 ~~NE~~ → 80SW in lmy cemented
zone

to N is frothy, ropy looking lava
with nodules of calate (1st?)

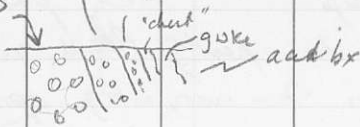
Frothy Flow top?

607

vole clast
pebbly 1st bx

gritty 1st or 1my 2nd

clasts
cobble - no 1st
cement



→ SW

then QFP with some finer frags
(dyke or sill?)

along strike

Tops 607 Beds 145/835W

Gwke graded - tops west

608 maundy ^{aug} of ^r plg andesite
dk grn partly oxidized (red)

641 Ridge crest green grn-looking
DT9WM15 partly hem silt andesite - gwke?
Head N a bit

644 Rnded to sub^r subsequent
mainly red to gray with frags
- large frags 4-15cm, 15%, 3mm-1cm
frags 50% matrix recessive, lumpy.
seems to be a pocket only
contact to NE is fq semi-oxid. and.

670 Edge of ridge green plg and.
hoe gets up for + silt
Head ~~at~~ south

29

looks amyg but also looks
fragmental

andesitic ash tuff?
chl frags

726 Bluffy ^{o/c}

top is calc cemented from volc
 bottom is very lmy cal veined
 highly amyg (cal.) lava and
 frag volc (and.) bombs(?)

psphatic/calc contact ~ 025°/steep
 gwke conglom

758 edge of ridge

Bedded zone 138/90

765 Head west again

772 Feldspathic acid rock - bx?

775 Acid Bx

went back to the 138/90 zone

new page46 Felds Acid bx on west / lmy
volc bx on right 130°/steep

Head west

108 knob And bx → hem. and → Bx

128 Purple + green and bx ^{dykes?}

purple frag cal veins

146 Sheeted chloritic rock derived
from amyg andesite (green)

amyg cal - sp

copy ed one bleb

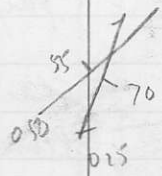
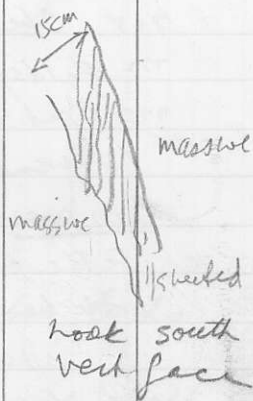
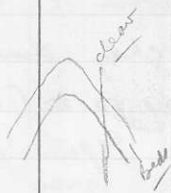
Sheeting
000/84E

PARTY CHIEF

WEATHER

79-WM-29

wade



PARTY CHIEF

WEATHER

162 Sheeted zone 010/85W

The rock seems to be andesitic ash tuff - green some red frags.

172 Sheeted (sheared) and bx-clasts

fg → ppytic slightly amyg 1-10cm avg 1-3cm 50%? Matrix green. Frags purple to green.

175 fg beds volc frag - ash tuff

177 zone with "bombs" to 25cm dacitic-looking matrix loc pear ep alt

sheeted/messure 170/80E

Sheeting 170/90

Base of cliff - looks like milled pebble bx + chd schist

190 on talus pile

with Stan vado

422 Stan @ D

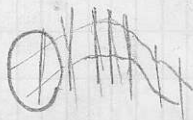
clears. 025/70E

Look NE vert face

050/55N

sheared chloritic rock

fg sst (sltstone)



→ east
PARTY CHIEF

WEATHER

475
 0
 0
 0 →

30 Green andesitic frag volc
 many (champs) scoriae frag
 volc clasts, feldspathic

Ash - Lepilli Tuff

PARTY CHIEF

WEATHER

460 King westward
sheared (sheeted) pale green silic-
looking rock.

475 sheeted rusty bn (ankerite?)

sl. calc rock - possibly tuff -
too smashed to be sure
sheets 175/85 W

485 ~~ca~~ yellow bn w/rg sheeted,
calc tuff?

490 less sheared - green highly amyg
→ red bn amyg plag and.

503 chl / cal amyg grn and -
haloxline fg
→ nearly microdior

511 amyg sl grn rock. andesite?

527 Felds volc pale green acid

↓
541 ash tuff

clasts glossy → scoriae → pyrite

Sample 79 WM 30

558 Road

(31) Pale Green

flattened pumiceous frog

Looks like a good vole

frog slightly felds.

welded tuff

570 Pale green talcstone by dacitic
flow or tuff(?) ash flow tuff

578 Similar but plagioclase x15 10% to 1mm.

Sample 79 WM 31

Welded Tuff

610

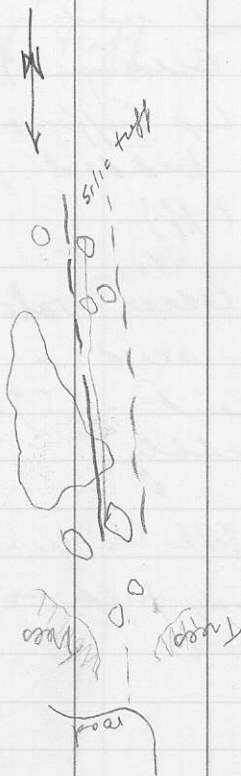
616 Bedded unit

Bedding 175/37E

acid lap tuff overlain by
poorly bedded volcanic (or
ash tuff)


625 Very coarse volc bx - bomb
bx - acid + basic frags
cement 35% calcareous
+ pebbly.

640 Rock looks like green plagioclase but
is sandy tuff → pebbly tuff
westward.



PARTY CHIEF

WEATHER

684 Field sandy → probably volc bx
occasional bombs to 15cm
(one was "shaped") 

Ok grn felds acid basic volc
↓ fragmental
frags to 3mm
Tuff or SST?

691 Now more bombs 3-20cm ~10%
Resembles the bx down the hill
now

New Brg 335° (star)

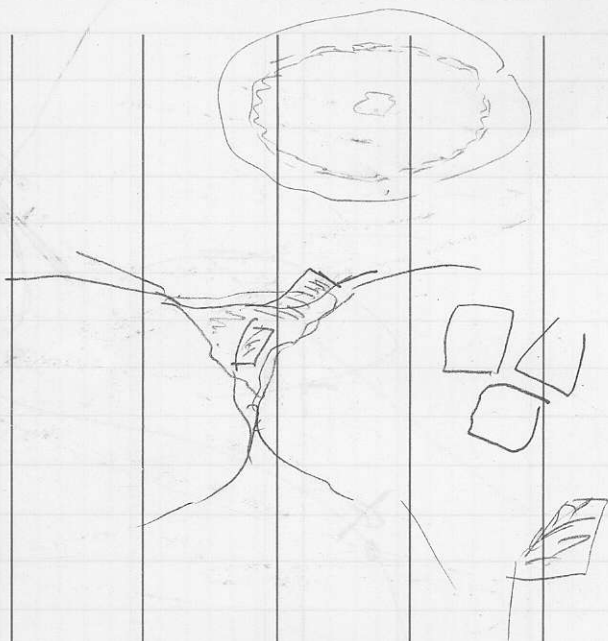
I went SW to 700 + ash tuff - apple grn
Lovely ^{scoriaceous} ~~fragments~~ frags

—RIDGE—
NW to 719 Pale grn acid welded tuff
good flattening

756 Contact felds SST/tuff on
east silic pale grn tuff on west
~~contact~~ ^{contact} 175° along hillside
apparent contact
010-020/40SE

PARTY CHIEF 860 ROAD

WEATHER —END—



main drop
 steel bridge
 ~ 2-3 km ~~to the~~ ~~the~~
 angle right
 lakes $\frac{1}{2}$ on east
 side

