

NE BC

896456

NE B. C. 1981 NOTES

Akue R.

Robb's Lake

July 12/81
Sunny

Traverse with D. MacI + TH

V Dev Black Shale
Beds I clear



m. Dev Silic. shales -

"pencil" shales

apparently soft sed. Folding
Common

shale interbeds / silty zones
(turbidites?)

GIN sample - Barite lenses
in black shale

Qtz - cal veining

hunch on Sil / Dev disconformity

Dev gkrite against Sil flaser bedded
dol. siltstone

CR siliceous argillite
unit

layer ~ 5m thick
not picked up by drilling done
up the hill - now drilling
down the hill - two drills -
probably have hit something

after lunch, headed NE along
ridge - just over the crest
we had Dev siltstone (gtz etc) with
many gtz veins then back in to
Silurian

~~Beds 235/34 NE~~

~~Lens 320/32~~

worked our way through the
fold axis into the other limb
then back up section into
Devonian 1st + shale then
rusty black shale * gtz's missing
- faulted out?

Visit to ELF - Cyprus level

3 photos of trenches

showing galeas / bracte
samples

stratobound, interlayered
with shale

20-70 gm / Home A9

Pb to 35% avg 10-15

MT Alcock

Banded talus zone with
a galena - rich layer (stratiform)

- Banded laminated, a bit
rextld -

also a silic center + underlain
by silic. arg.

To north, it butts against
silurian siltstone (fault)

Photo of Galena layer

Several Samples

CIRQUE

K Showery

Banded m-cg rextld, galena
(~3%) in lenses + fills spaces -
remot during rextld?

Down dip bar-gal →

sphal / gal. / banded / pyrite

30MT of ore.

[Handwritten scribble]

[Handwritten scribble]

look West

[Handwritten scribble]

[Handwritten scribble]

[Handwritten scribble]

[Handwritten scribble] 130/43

look 130 down plunge

STOP

July 13/81

cloudy (sunny)

Start in Ketchikan Pmn

Way to Lam. bedded kmay

→ arg. mudstones

very thick

bedding (clear subparallel)

worked along the ridge then

thunder / lightning / hail / rain / wind

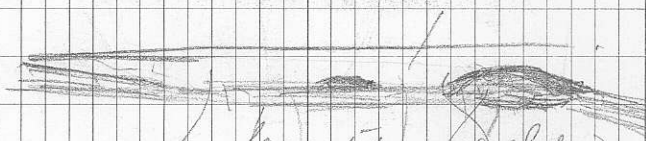
[almost hit by lightning]

Hit trail + road → Up Devonian

- a series of folds messed
up by axial faults -

beautiful resistant / recessive
weathering effects

Sub



laminated
m

rich
dark
carbonaceous

Sand
shale

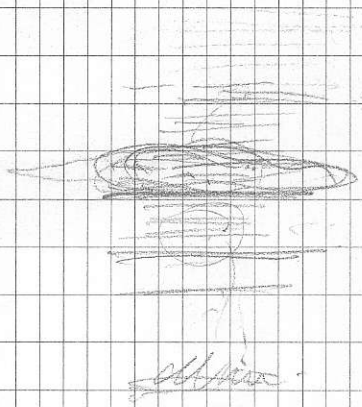
off
sand

red
siliceous

g/c

dark
coloured

dark
shale



off
sand

July 14 (8)

Broken cloud

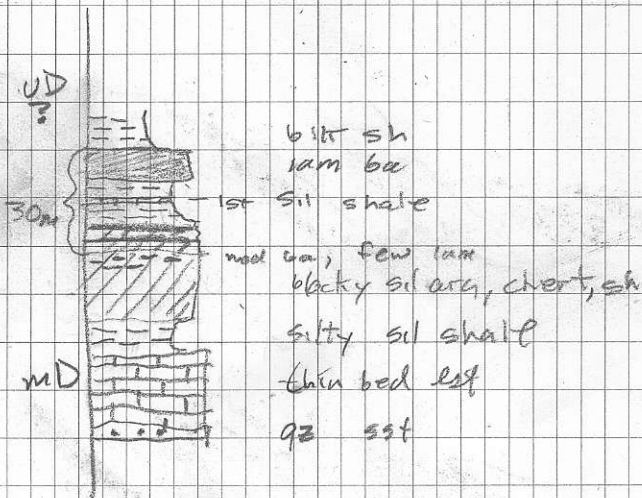
Kwadacha Barite Deposit

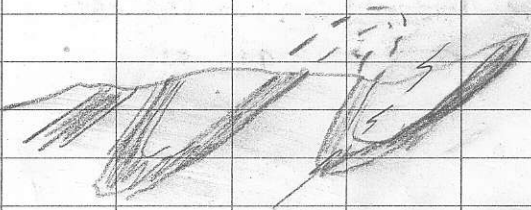
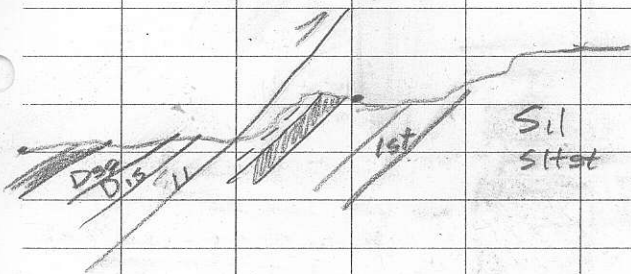
Bauxite

Silic arg - black + finely lam,
Black (st L → M Bar. cherty

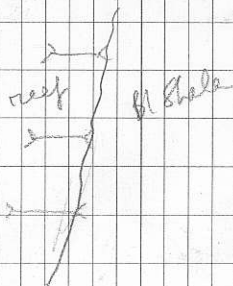
Qtzite (1m)

Sil. Sulfate





~



Pie

Pb showing - in fault?

Reef mid Devonian here

Mudstone - only galena
probably a vein

FLUKE - not visited

Similar setting to Pie?
Probably.

BESA R Shales
Unit A

----- sand
cyclic ore Bx B

silty laminated

irregular sand - - - - - C - - -
ore Bx cyclic

impure

shale NONDA carbonate

122

Robb Lake

15 July 81

Sunny

Amphipora - stromatopora -



Photo



CASCADE SHOWING (East Webb Trend)

MONOCLINE FLOAT

DDH

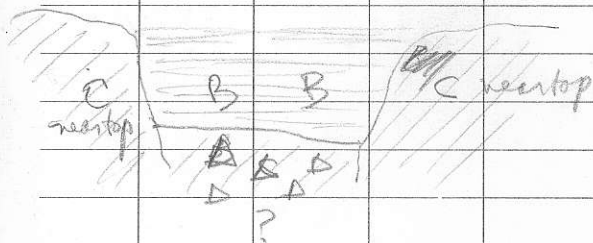
LOWER SHOWING

UPPER "

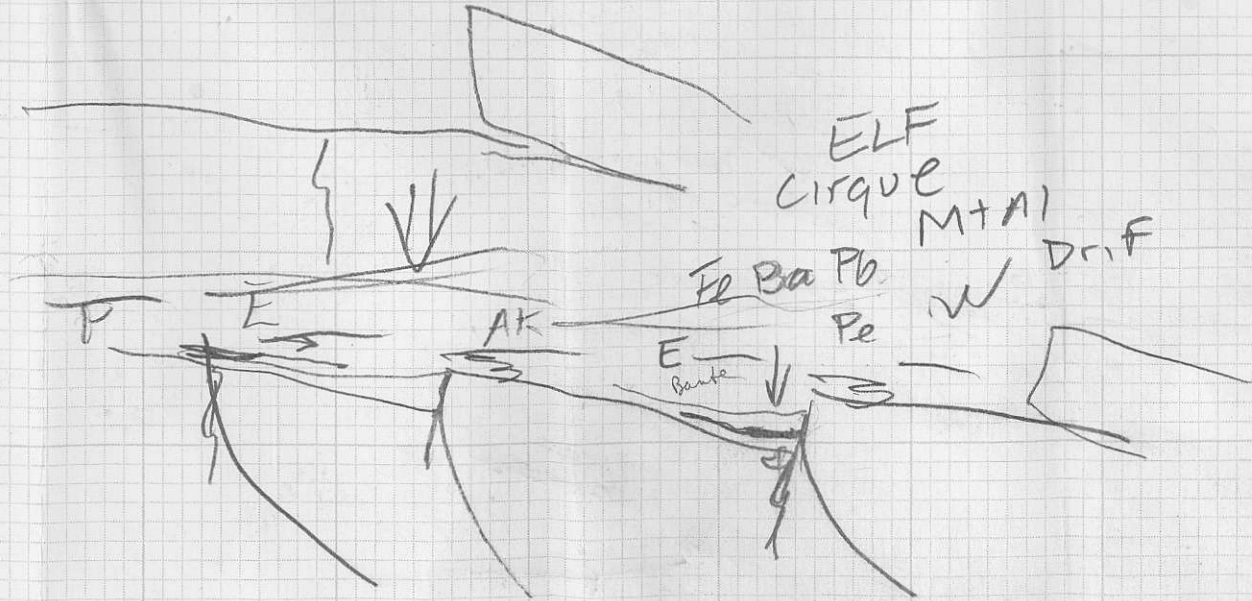
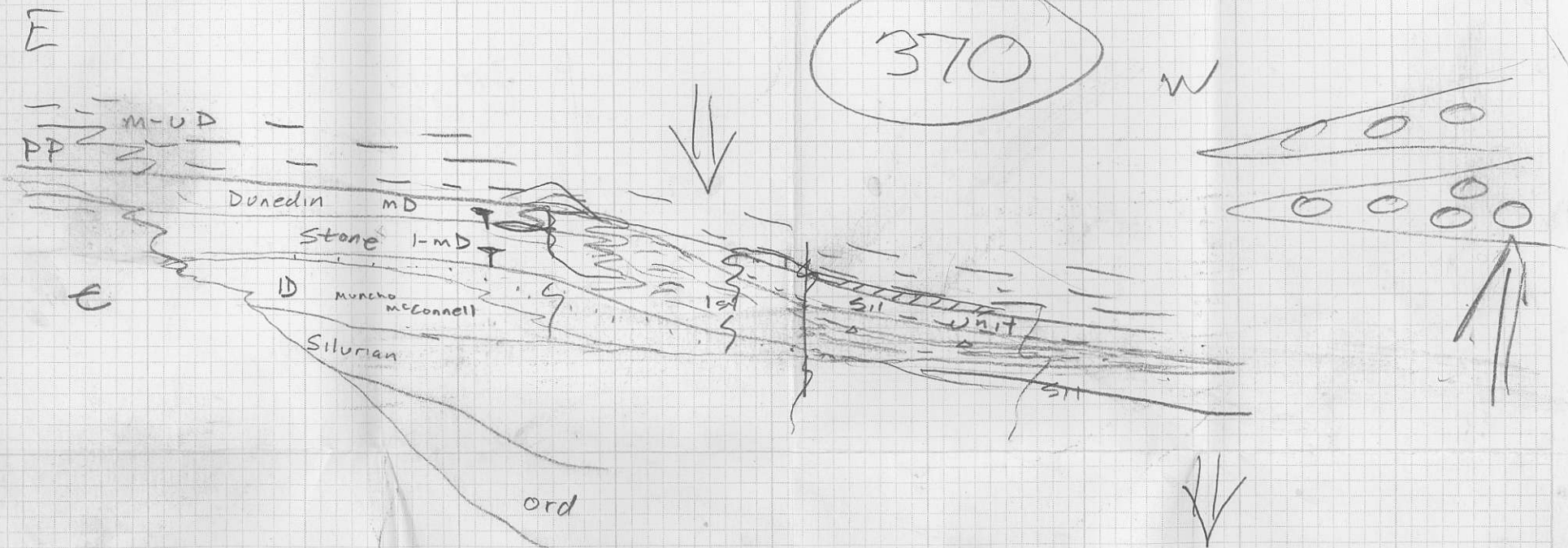
N. FACE

Visited the creek, waterfall
etc showings going down
the creek

Look Northerly



370



Bante → MS

Atkie River Area

CYCLE 3 [bl shales
↑
carbonate + turbidites]
----- unconf.

red
seq? [sil CYCLE 2 [bl shales
↑
carbonate + turbidites]
----- unconf.

ord CYCLE 1 [black shales
↑
carbonate + turbidites]

↳ Late Dev Basal Lst / siltstone / shale / minor coals
----- unconf.

Ketchikan

E - EØ Nodular mudstone & siltstone

Road River

sh, siltstone, lst

Devonian

unconf → discon

Silurian

up to 800m

silt, sh + turbidite

Gen. dol. siltstone, minor lst ↑ chert + Xbedded lst

Basal lst or lst turbidite

Proximal Turbidites

Ord

→ E

discont. ^{Pu} ~~Volcanic~~ black shales / minor cherts

siltstone + shale + lst turbidites

mOrd

unconf

