

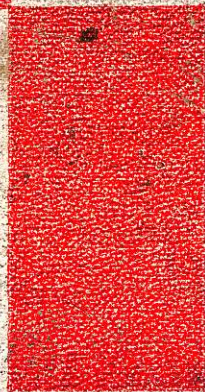
896421



ISHERWOOD

1972

Highland Valley



6

5

4

3

2

1

1
2
3
4
5
6

335-8360

FIELD
BOOK

May 20/72

Weather: Clear + Hot
With Norm Jorgensen
Start beyond Barnes +
Willard Lakes. Air Photo
BC 71

On hybrid outcrop all day
ended at CPR main line
on Thompson River, walked
to road

May 21/72 overcast + Warm
with Norm Jorgensen

Air Photo BC 7127-099

- 1st station hybrid - other outcrops
- 2nd — volcanic (Kamloops?)
on Penny Lake
- air photo not too valuable as
area has been recently logged
- located possible contact agglomerate
with hybrid 20 away

May 22/72 Cloudy + Cool
start with Dave Coombes, 12 noon
we depart, heading south east
Photo BC 1727-138. No g/k
for entire traverse. 1 found photo confusing

May 23/72 Cloudy + Warm
With Norm Jorgensen
Photo BC 7127-079. Above
Thompson - looking for contact
between Kamloops + Nicola

May 24/72
With Doug Blanchflower + Norm
Jorgensen BC 7127-073
First real day of setting up
stations. More work with
air photos

May 25/72
With Dave Coombes around
Denny Lake. Working with
volcanics - mostly Kamloops
BC 7127-073. Station 19-14
rather unusual

May 26/72
In camp. Unable to pick up
motor bike

May 27/72
Tracing the Nicola - Jurassic

Contact: Photo's 7127-128,
7127-108, 7127-065. Second
bike breaks down

May 28/72
In camp

May 29/72
Take bike to Cache Creek
for repair - sent on to
Kamloops. Continue with
traverse of May 27/72
Station 18-13 A - possible Dye
called Nicola for now-done by Combs

May 30/72
Complete traverse of May 27
& 29. Pick up blue bike
from Kamloops

May 31/72
Doing a fill-in traverse
to give more detail to the
outcrop map, Line 19 #
727-071

June 1

Contact for Hybrid East
of May 31/72, Same
air photo

June 6

In camp

June 7

Working near the CPR
tracks in Walachin, with
Doug B., the day I passed
him by

June 8

Doing linears - plus setting rock

June 9

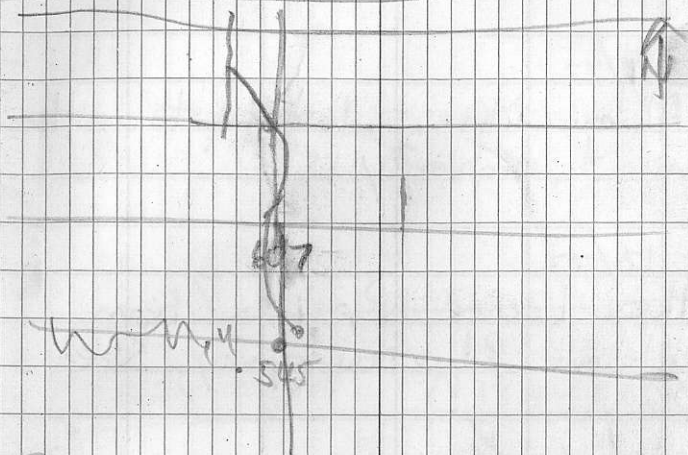
Re inking lineations

June 10

With Doug B. looking for
the Evichon Hybrid Contact
Line 13 # 7122-76, 77, 78

June 11

In camp - went over rocks
with W J M - cutting
rocks also



↪ Part of June 19

June 12

In camp

June 13/72

Cutting rocks, afternoon went to
Alvin to arrange for tour.

June 14/72

In camp working on
lineation study

June 15/72

To Kamloops. Traverse West
of Savona on CPR track with
WJM, redoing DB work

June 16/72

To Alvin Mine, later to the
Highmont property

June 17/72

On the Lorne Pipeline from
Bethlehem Rd → new highway, Skeena

June 18/72

In camp. Took AMC in for
repairs - wheel bearings

June 19/72

BC AIR Photo # 7128-293

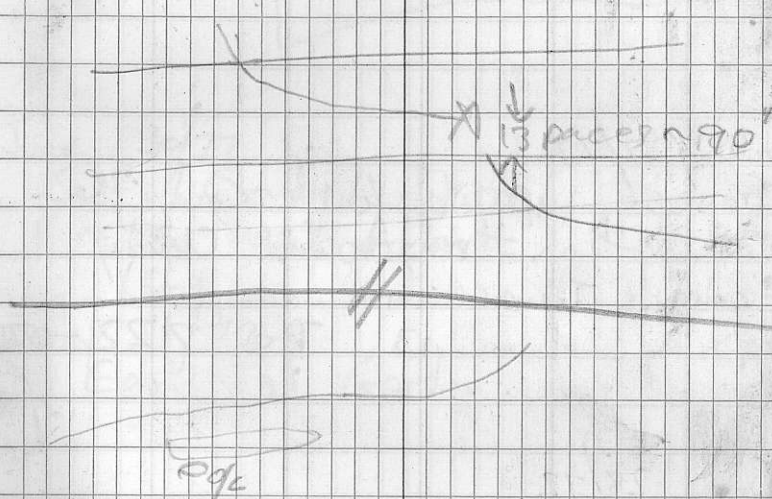
on Kamloops Chataway Contact
near Gypsum Lake. Course outline
on over lay. At 18-21-0 I went
due south looking for o/c,
stopped at next line

Turned north at 1075 paces

KV o/c at 1111 paces

next road 124 parcel, approx
200 ft from end
see map on previous page
to new road

June 20/72



With NJM in Trenches
near # 4 Zone

June 21/72

With Norm J. near Cargan
Lake. Separate traverse to
pick out outcrop

June 22/72

International - transfer repairs
go over roads, cutting as well

June 27/72

Traverse up Guichon Creek,
working on my own. Cloudy
& cold. Traverse not completed
properly. Line 13 BC 7122-076

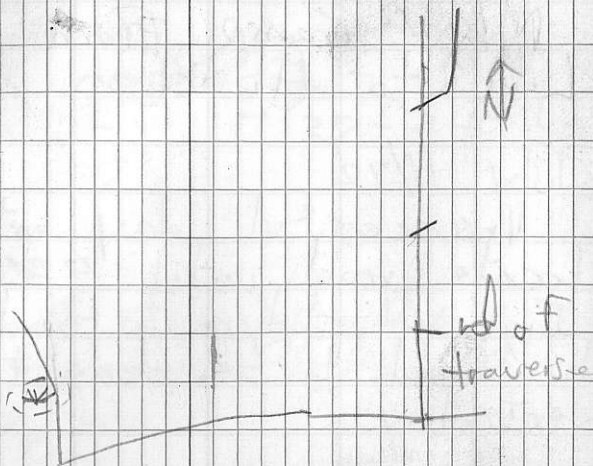
June 28/72

Packed for Tyner Lake Fly
Camp. Set up camp

June 29/72

Self. Sunny & Warm; Approx
2 miles north Tyner Lake

Possible New Road



June 30/72

Self, Clady & Worm
1 mile east Abbott L.

July 1/72

East of Gordon L.

July 2/72

Self, Sunny & Hot. M.le
South of Fair L.

July 3/72

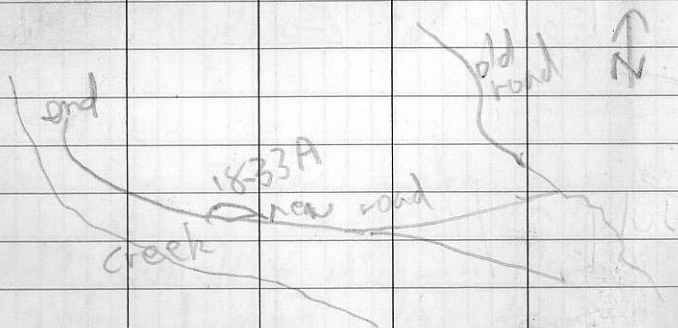
Moved Camp From Tyner
Lake to Aberdeen

July 4/72

Unsuccessful day, not
locate road until 5 pm, N.
Jorgensen did my road,
his had to be done the
next day

July 5/72

Sett. 2 miles west of
Mamit L. Near the southern
2 miles of L. Clear + Hot
BC 7128 - 241 L + 2



no scale

July 6/72

Self. Sunny + Warm → hot
1 mile north East of
Cougar L. 7128 - 240 L+2

July 7/72

Self. South of yesterday
Cloudy + Warm. 3/4 mile NE
of Cougar L.

July 8

Self. approx 1 mile NE of
Junction of Gordon Creek +
Nicolas River. Cloudy + Warm

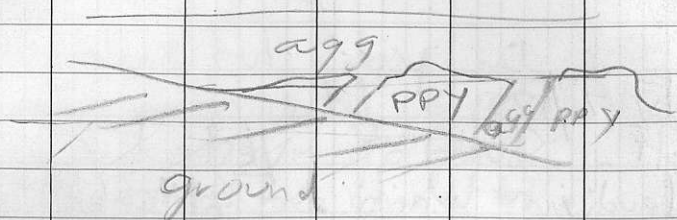
July 9/72

Self. Approx 1 1/2 mile North
and slightly west of the
above junction. Cloudy + Warm

July 10/72

Self. West of yesterday, approaching
Spuhm Creek, on south east corner
of map sheet 6B, Spences Bridge
Group BC. 7129 - 084 L - 1
Clear + Warm

Station 18-45



July 11/72

Self. Cloudy + Warm
West of July 10, end of day
should be able to see Skuhon
Creek BC 7129-085 L-1.
Approx 1 mile East of Skuhon
Nicola R. Junction

July 17/
Rock & Plotting

July 18/72
Set Camp examine
Kingsvale BP

July 19/72
Self Warm & Clear along
Swichon Cr. 'No gc
BC

July 20/72
Self Sunny & Hot Self
1 mile E Tynar Lake
BC 7
Day lost bike

July 21/72
Self Cloudy & warm, Rain
1 1/2 miles North Craighorn

July 22/72

Self Clear + Hot
Promontory Hills

July 23/72

Self Sunny + Hot, a
new record for weather
2 mi West of Lower Nicola
east of Promontory Hills

BC 7103 - 037 L-7

July 24/72

Next three pages show
o/c From Assessment

Report # 735 Map # 1

All free hand L-4

BC 7102 - 181 → 85

Self Clear + Hot

1 Mi W Camp Lake
Working toward Camp

56

~~W~~

40

W
Boards
ok

0

24

Camp

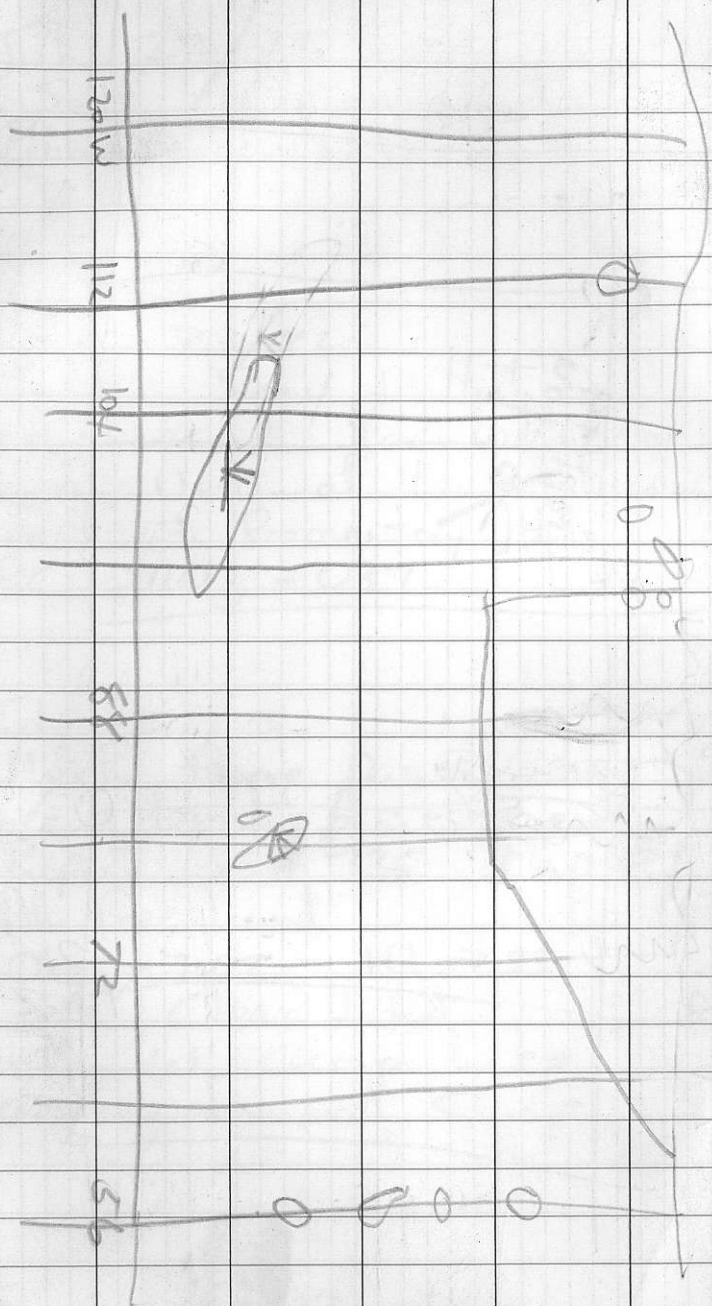
~~W~~

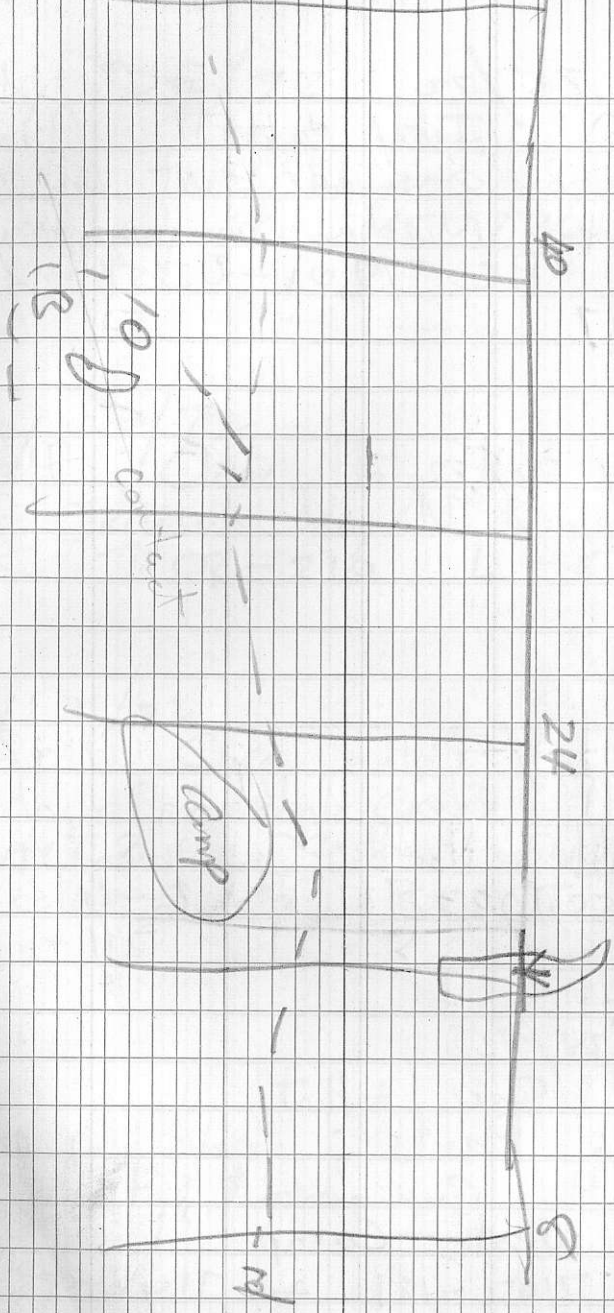
0

W

W

Track on





July 25/72

Self Cloudy + Hot

Approx 8 miles east of
Lower Nicola on highway

BC 7901-035

L-7

July 26/72

July 27/72

Self Clear + Warm

3 Miles North Craigmont

BC 7102-181 L-4

July 28/72

Self Clear + Hot

Two Parts; one, 1 mi
north Craigmont; two, 2
mi west Camp L.

BC 7102-181 + 7102-188

July 29/72

Self Clear Hot

6 mi W Lower Nicola on

Highway 8. BC 7201-073

L-8

July 30/72

Self Clear Hot just east

of Jackson L₂, N. Craigmont

BC 7102-216

L-5

July 31/72

Self Clear Hot

North of Gordon Creek

approx 3 mi east of Gordon

Nicola Junction BC 7102-113

+ -115

L-3

Aug 9/72

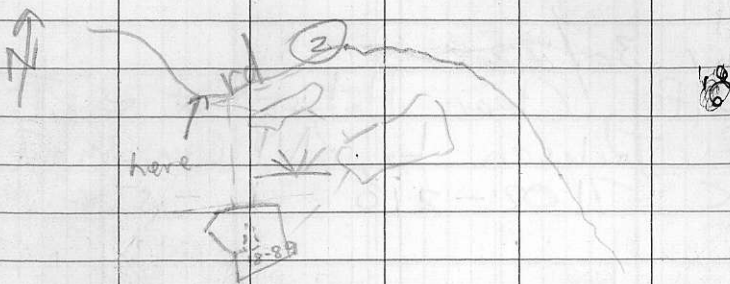
Self Cloudy + Warm

1/2 mi N Inkikuh Cr. Q III

of bg BC 7128-038-42

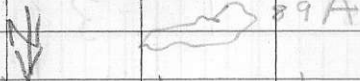
L+T

Trenches Near Rd



760 paces from rd (1) to (2)
rd (1) near camp

travel 180 paces along rd (2)
went south 30 paces came
to o/c 18-89 A



o/c (89A) grades between
89 + 89 A

Aug 10/72

Self ^{Semi} Clear + Warm

1 M: N. Pimainus Cr 69-4

BC 7128 - 054 + 55 L+6

1st o/c elevation 3220 ft

275 paces from start (18-93)

Aug 11/72

Self Clear + Warm

Doing loop in Spences Group
South west of Pimainus

Cr. In IV 69 + overlapping
in III 6 f BC 7128-054

L+6 + BC 7128-115

L+5

Aug 12/72

Self Clear + Warm, Also
doing loop SW of Pimainus

Cr. Entire traverse in IV

69 BC 7128 - 114 L+5

Aug 13/72

In camp

Aug 14/72

Rocks & Moving

Aug 15/72

Clear + Warm. Self Traverse

just south of the junction of
Pimainus creek with the Thompson
River. Spences Bridge Gap.

BC 7128-052 L + 6

Aug 16/72

Late start, early morning rain
cloudy + Cool for day. Self

Traverse consists of doing a

loop east of Clapperton. Spences

Gap. BC 7129-003 L 0

Aug 17/72

Cloudy + Warm Self

Approx 1 1/2 Mi North Skuhon

Cr Skuhon Cr Junct Southern

Part of Loney fault

BC 7128-303 L 1

Aug 18/72

Sunny + Hot Self 2 1/2 mi

N of Junction of

BC 7128-2900 L 10

BC 7128-2900 L 10

Aug 19/72

Sunny + Hot Self 2 1/2 mi

Traverse between Klokowich

Cr + BC 7128-2000 L 13

of bg BC 7128-2000 L 13

+ BC 7128-1300 L 13

Aug 21/72

Sunny + Warm -> Cloudy +

W Self 2 mi Start up

in P. maines Hills, down to

Plains (up other side)

side falling, down to Cr

Hills BC 7128-128 L 14

+ BC 7128-1100 L 14

18-153
26. Dr. 92
6.6

Aug 22/72
self cloudy &
Cool. Loop around
Papsilqua Cr.
approx. 4 mi
N of Junct. of
Papsilqua &
Skuhun Cr.

BC 7128-308

L+1 7128-221

L+2. Lost Pencil

Trav. 41

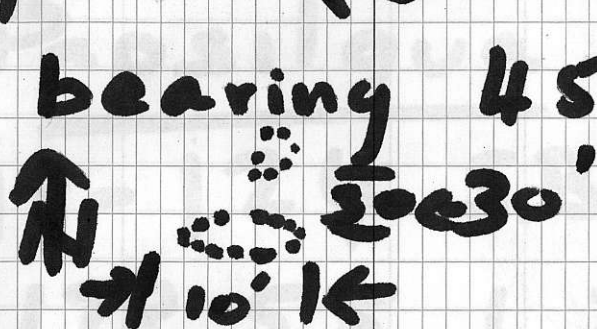
18-123

sp. Br.

green
P.P.

097 90 0 2 2
064 66 2 2 2
148 31 2 2 2

3550' 895
paces (start 600)



Pap. Cr
3480' 938 p

top of steep
climb. 3920'
1297 paces
(5' per pace)
@ 30° since
Papsilqua Cr.

18-124 S.B. egg

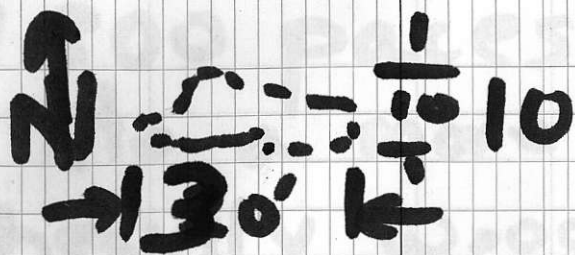
178 55 1 2 2

124 30 2 2 2

085 73 1 2 2

1443 paces

4120' @ 5 feet ↑



bearing 265
 from o/c to
 clearing where
 other traverse
 started.

1725
 935
 790

4650' ± 1725
 paces, shallower
 grade. (1' / pace)

4000

3200

1800 paces come
into a more.

heavily wooded
area

18-25 Hybird?

115 72 2 2 2

138 49 1 2 2

034 70 2 2 2

Qtz 05 ?

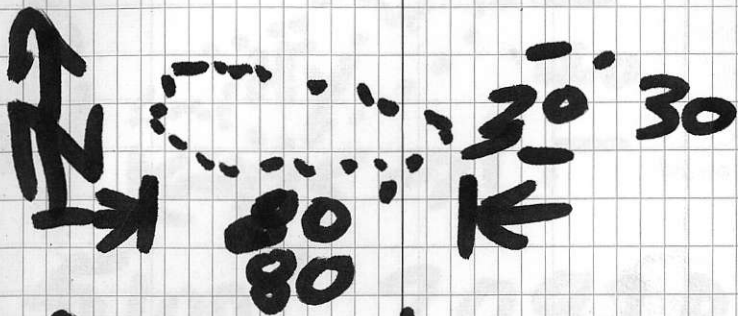
Plag 40

K spar 35

Mafic 20 2.7

Magic Min $\frac{3}{1}$

1932 paces
4850'



Alteration

1 - 2

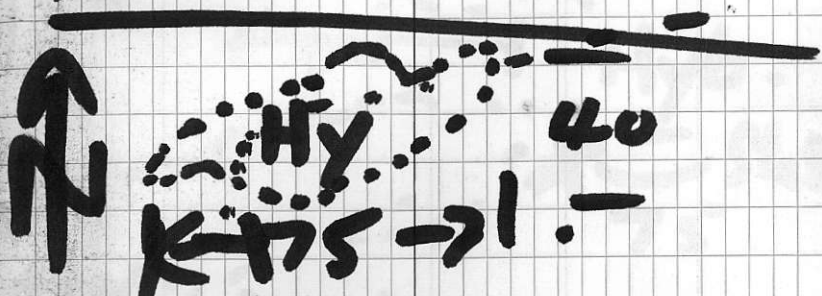
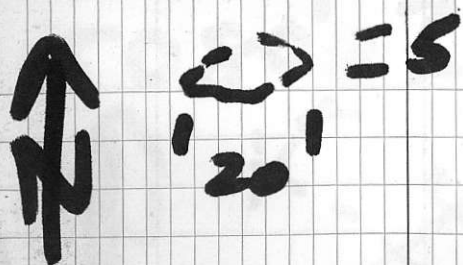
.....

2009 paces

Hybird o/c

5850 elev.

48 50



5100' 2097P

change to 90°
bearing from
to 2497 paces

5080' 2419 P.

↑
N

~~760~~ 1 Fo

Hyb.

~~75~~ Stat.

trav:

1-160-1-

18-263

092	87	2	2	2
154	66	1	2	2
134	26	2	2	2

25 12 P

Qtz 08

Plag 64

K spr 05

Mafic 23

3,9

Mafic Min

3

Mafic Guich.?

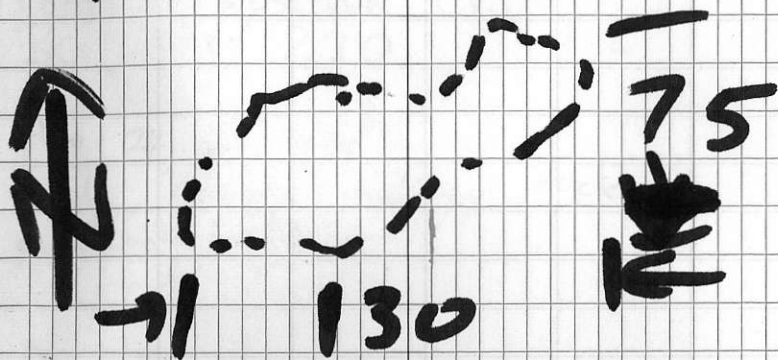
→ Hybrid

Alt 1, 1

2p

18-127

4300' - map



f.g. Hyb. ?

Nicola? Sp. Br

155	81	2	2	2
015	78	1	2	2
095	64	1	2	2

contains pyrite

Aug 23/72

Self, loop around lake which feeds Papsilqua Cr.
BC 7128-220 L+2

Aug 24, 25, 26/72

In camp cutting rock, packing, etc

Aug 27/72

Self: Sunny Warm. Looking for the Bethesda, Skeena Contact south of Highmont. BC 7128-140
L+4, BC 7128-193 L+3.

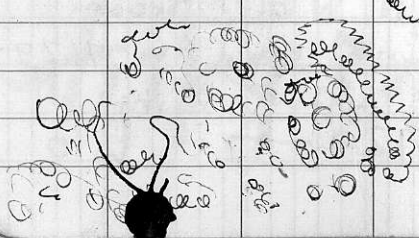
Aug 28/72

Self: Sunny & Hot. 2 loops
First loop west Broom Creek approx 1 mi N.W of Broom
Larchan Cr Junction, BC 7129-069 L-1. other approx 2 mi N
of above BC 7129-021 L 0

Aug 29/72

Self, Clear + Hot
Doing Hornex Tailings
Pipeline between its
intersection of New Highway
to the tailings Dam
Checking fol'n stations of
Coombes, doing o/c

Start			83.2	
Cross a Power line			83.8	
- - Dry Cr			83.9	
Fol'n #50	18-135		84.05	(5)
#49			60ft back	
#51			84.1	
90.5	52	18-136	85.1	(3)
90.8	53	186A	85.4	?(4)
91.0	54	18-137	85.6	(4)
91.05	55		85.65	(4)
91.2	56		85.8	(4)
91.3	57	18-138	85.9	
	58		50 ft past 57	





ro .2 = 4%

13
700 5280

250
10
264

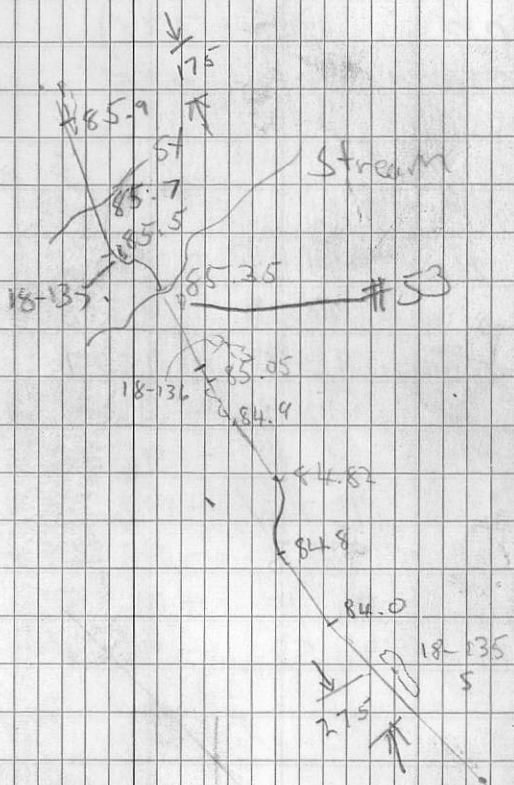
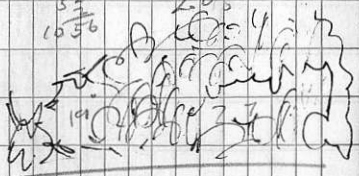
1320
5280
1" = 1/4 mi

1370
5280
1/4

528
1056

93.35
91.3
2.05

85.9
83.2
2.7
14.75



rerun

2nd	st	91.15
1st	st	90.85
3rd	-	91.55
road	-	91.65
2 more	-	92.10
	-	92.55
	-	92.85
	-	92.95
dunn	-	93.35

stream

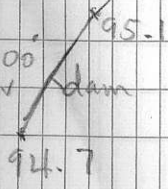
pipe 45° (225)
 power line 335

dunn	94.7 - 95.1	
pipe	95.1 - 95.5	rd 95.2) 30°
-	95.5 - 95.7	45°
	95.7 - 96.1	103°
	96.1 - 96.25	127°
	96.25 - 96.3	145°
	96.3 - 96.45	grad. turn
	96.45 - 96.52	95
	96.52 - 96.65	grad turn
		86



95.5
94.7

4000'	210	
4050'	225	
4200	283	
4260	307	- already
4280	325	
4300		
4300	275	
4300		
4000	266	
4100		
4200		
4300		
4400		
4500		
4600		
4700		
4800		
4900		
5000		
5100		
5200		
5300		
5400		
5500		
5600		
5700		
5800		
5900		
6000		
6100		
6200		
6300		
6400		
6500		
6600		
6700		
6800		
6900		
7000		
7100		
7200		
7300		
7400		
7500		
7600		
7700		
7800		
7900		
8000		
8100		
8200		
8300		
8400		
8500		
8600		
8700		
8800		
8900		
9000		
9100		
9200		
9300		
9400		
9500		
9600		
9700		
9800		
9900		
10000		



Aug 30/72

Semi Clear + Cool, Self

Approx 2 miles West

Abbott Lake BC 7129-109

L-2

