

Base for part of Fig 22

Fig 23(a)

Fig 24(a) & (b)

reference line

Ultimate pit perimeter

metric 25600N

25300ft (metric)

reference line

112%

GEOLOGY LEGEND:

++ Quartz & Quartz Feld. Porphyry Dyke

+ Porphyritic Skeena Quartz Diorite

Propylitic Zone

Faulted Quartz Vein, Mineralized

Overburden Contact
Oxide Zone

Major Fault zone with observed, interpreted contacts

1.....4 Stops of interest

DO NOT DRAUGHT

* (Base for Fig 24)

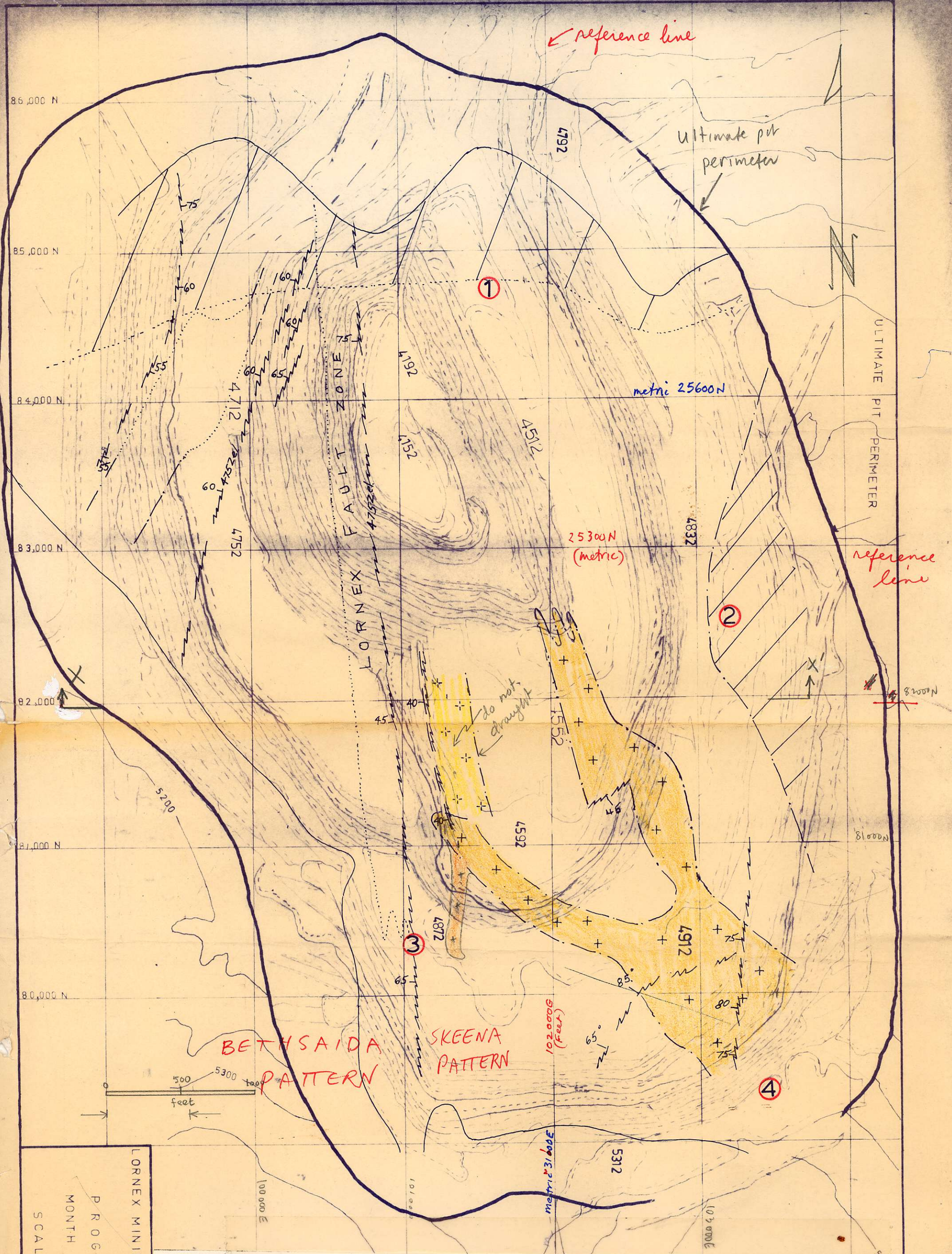
896373

SCALE: 1" = 600'

MONTH OF APR. 1983

PROGRESS PLAN

LORNE MINING CORPORATION LTD



GEOLOGY LEGEND:

- Quartz & Quartz Feld. Porphyry Dyke
- Porphyritic Skeena Quartz Diorite
- Propylitic Zone
- Faulted Quartz Vein, Mineralized

- Overburden Contact
- Oxide Zone
- Major Fault Zone with observed, interpreted contacts

1.....4 Stops of interest
 DO NOT DRAUGHT
 * (Base for Fig 24)

LORNE X MINING CORPORATION LTD

PROGRESS PLAN
 MONTH OF APR. 1983

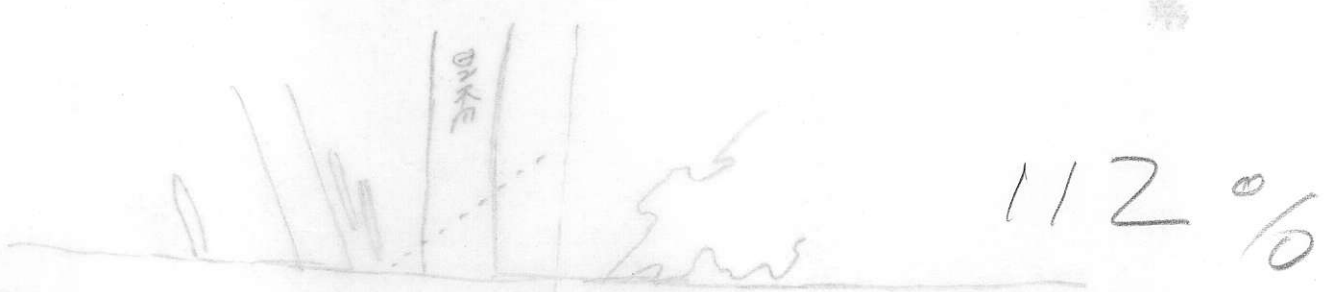
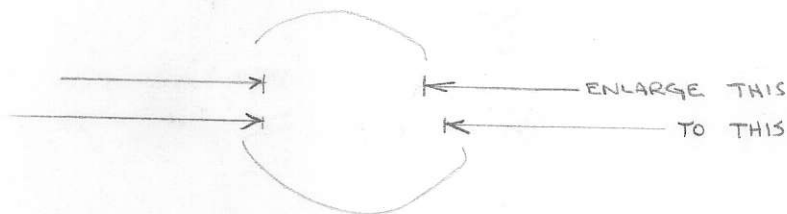
SCALE: 1" = 600'

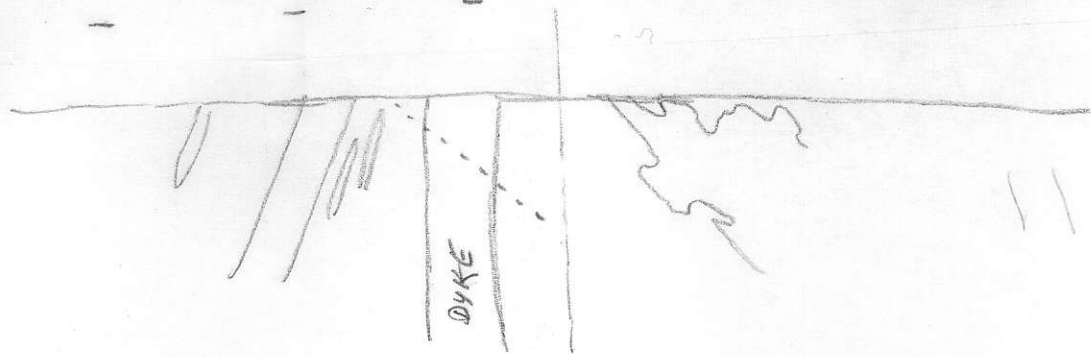
896373

Base for part of Fig 22

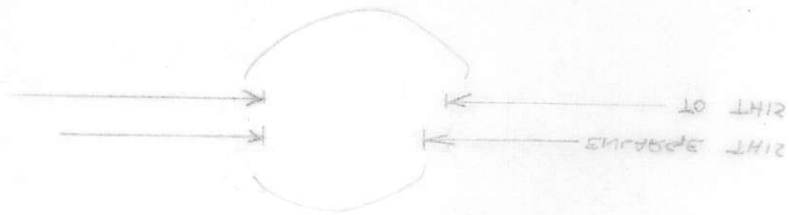
Fig 23(a)

Fig 24(a) + (b)





115 0/0



Power for bank of (2) 55
 (2) 53 (a)
 (2) 57 (a) + (b)