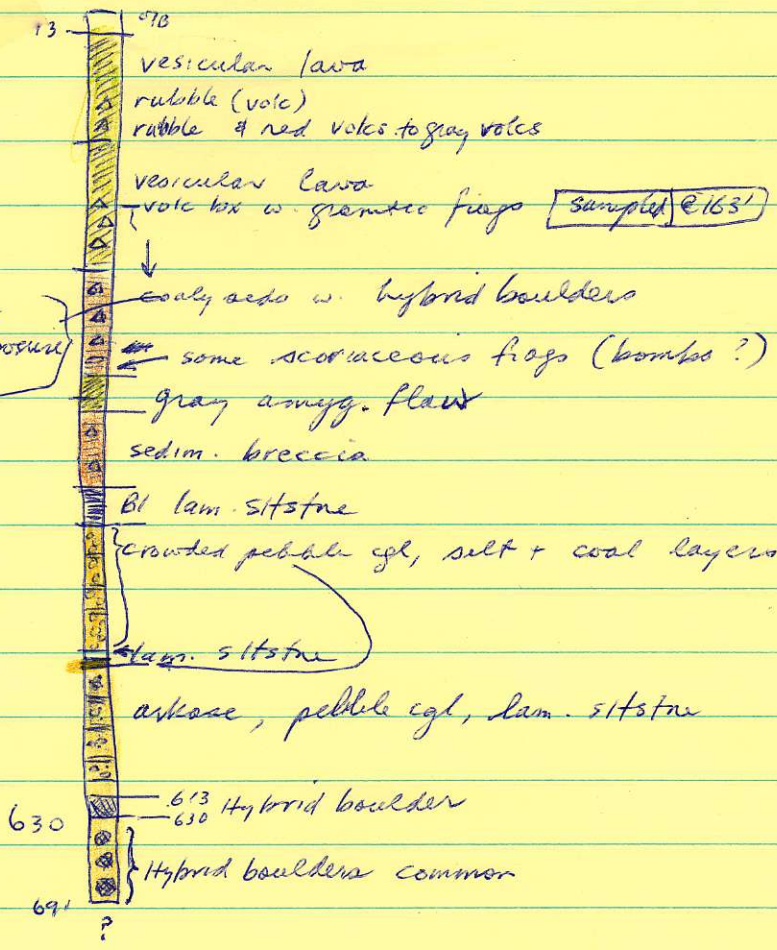
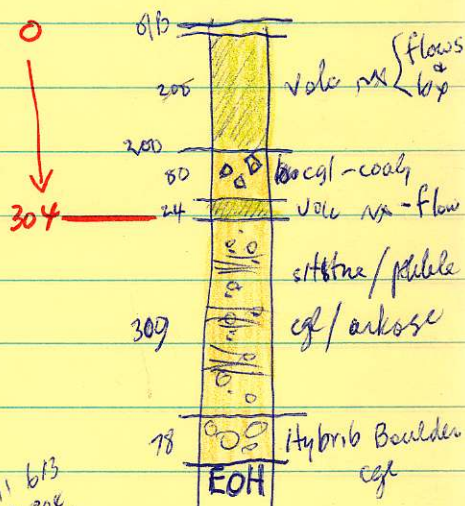


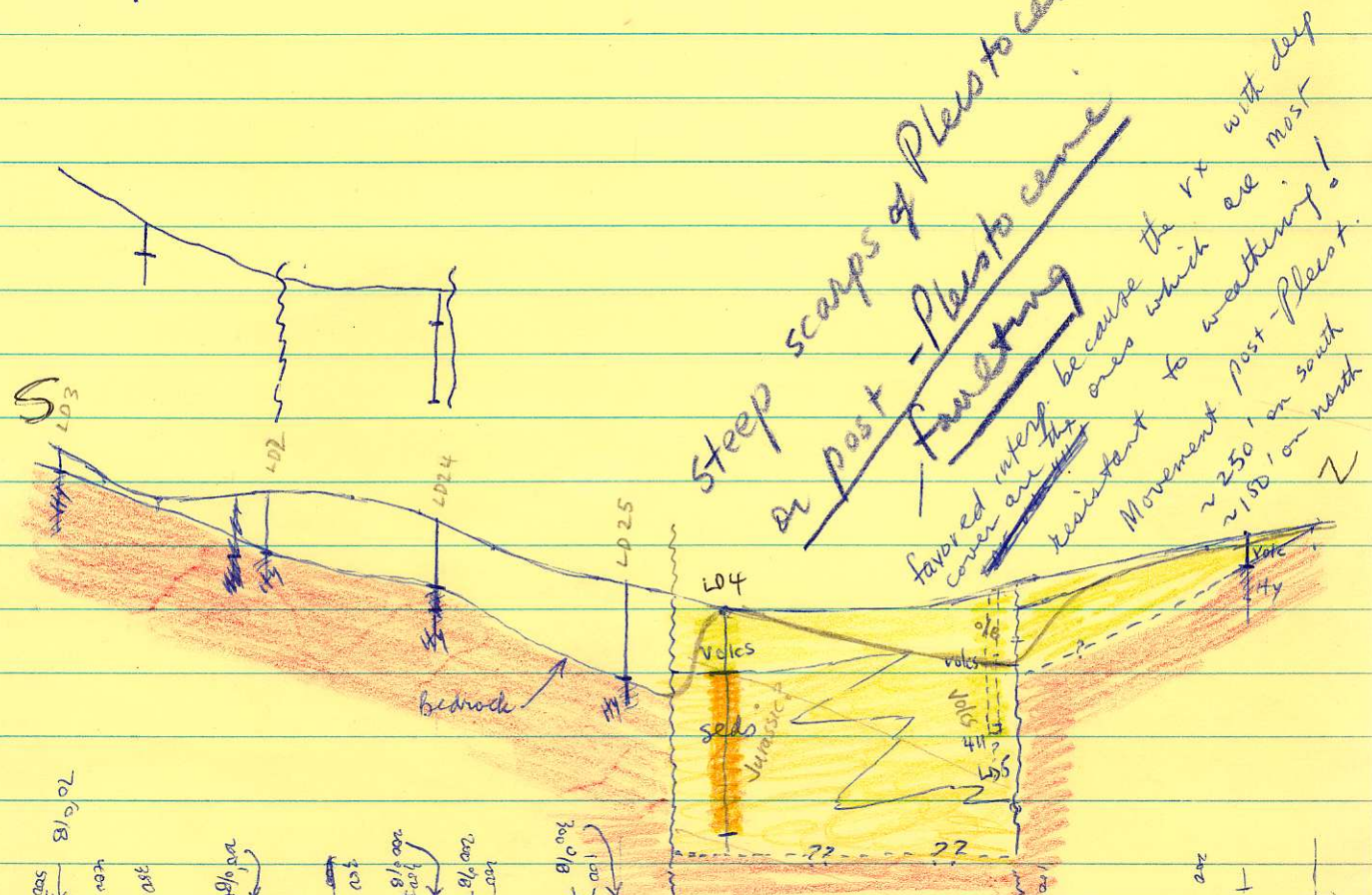
LD 4 ^{lower} sed are odd - possibly they are Jurassic!



LD 4 Generalized



613 b13
613 302
78 510



sedo desiccate + crumble after exposure to air

steep scarps of Pleistocene gl
or post-Pleistocene
favored interglacial cover on the scarp
resistant to weathering
Movement post-Pleistocene
~250' on south
~150' on north