

896307

92I/6h

3 Noranda

drilling south

of Valley

Copper

APRIL 1970

WJ McMillan

MD 4

MD 5

may be 100' N
of posn shown

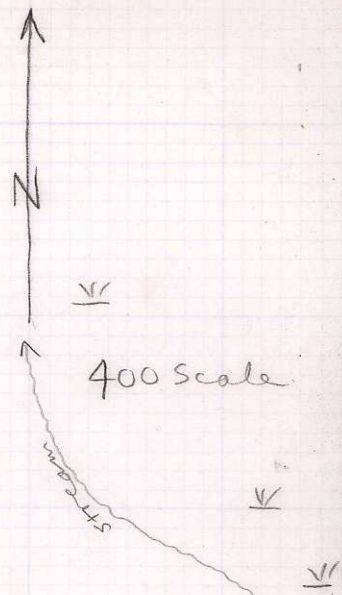
2 ← 1100'

3 ← 1800'

Core shed

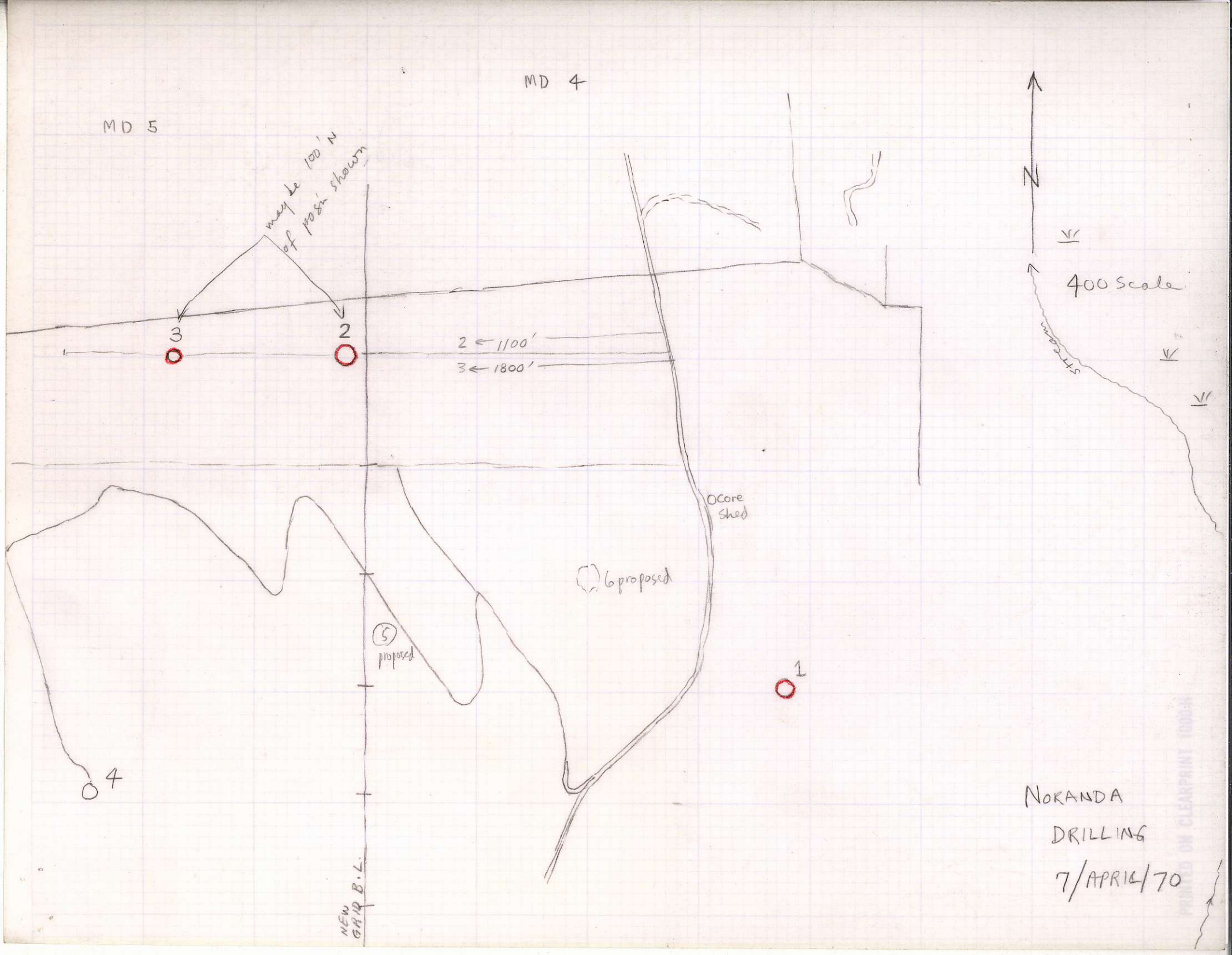
6 proposed

5 proposed



NORANDA
 DRILLING
 7/APRIL/70

NEW
 GAIR B.L.



PROPERTY
HOLE #

FOOTAGE

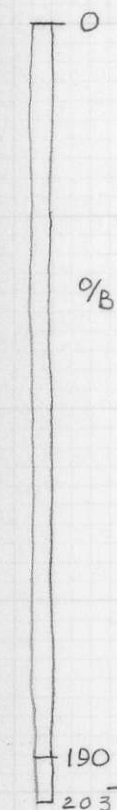
RECOVERY

ROCK TYPE

MINERALOGY

ALTN

ORE MINERALS



Rubbly fragments

QTZ-EYE
Bethsarda g-d.

Qtz eyes (m-cg) 18%

Mafic-chloritized 5%
-after biotite

Chloritiz'n

NIL

Matrix white, f.g. 77%

Unsure now - may be dealing with
frags of Bethsarda g-d.
with quartz eyes

cpy in mafic - one
grain seen

Last thought - very likely Bethsarda

sample: 1 - 202

Rock Rusty to 22'

0/B
Rusty fractures
fewer fractures but local sheeting at 60° to core
Qtz(?) vein at 90° to sheeting at 19'

Bethsaida G-d 20-15% Qtz eyes cg squarish
8-5% Bi books mg squarish
± 80% Fs xls coarser than in DDH 1

slight chloritization to 80% chloritization
Rust along fractures

NIL

@ 11' cream altn (kaolinite?) of fs adj. to cracks
13' chlorite coating some joints

14' - Blebs have cpy mantled by black chalcocite? and assos. with pale green sericite altn.

15' white mineral in fractures (fairly hard but scratches - zeolite?)

Bi → white mica (talc?)

- Malachite on joint faces
cpy with chlorite - cpy as tiny blebs along branching fractures
→ Pyrite (tiny cubes) occurs the same way

17' 1st cg hb xl seen pink, subhedral

15' "kaolin" altn fairly pervasive

16' cpy in chlorite along "shears"

5 to 30 Some of the qtz eyes are up to 1/4" Ø

22 to 30 Considerable rusty altn and creamy argillic(?) altn.

mantled by green sericite
22-30 v. sl. mal. on some joints

Comments	Rock		altn	Min'l'n
	Qtz-Eye Bethsaida G-D.	30-32	altn spotty cream	33 Malachite on joint
		32-34	altn intense	
		38-40	creamy altn along sheeting at 60° to core	
		40-46	altn continues spottily to 48	
		47	chlorite in vertical fracture	
		54-55	Pale green sericite altn intense	56 Malachite in sericitized G-D.
		56'	same	
83 and 86 inch-thick ^{pink} rapelite dikes in Bethsaida			fresh	some mal stain
127 Veins in subvert fractures		103	sericite, Kspar altn	103 cpy pods
		98	sericite altn - subvert. Fract	98 cpy in fractures assoc w sericite altn
143 Still Bethsaida - rel. unaltered				143 Kspar / chlorite / cpy veinlets
			166 sericite altn	166 sericite / malachite

210 - 231 considerable sericitic altn
 Continues to 280 but manifests itself as
 pale green fs \approx no cg sericite

one fracture
 had sericite/
 cpy/pyrite

to 324 some qtz veining some dk green
 veining

lots of chloritic veins in
 sub-vert. fractures

330 qtz - chlorite - vein
 w. cg cpy pods

after 370 Altn is much less intense although
 sericitization occurs in halos around
 vertical fractures

steep fracture but
 not vertical

400 end of hole rel-fresh qtz-
 eye Bethesda continues to here

910 to 35'

Rock has rather small 1/8" across square qtz xls + bi is altered yellow.
 by 45' some good big square qtz xls + fqbi books (chloritized) 5%

47' steep sericitic fractures are mantled with cpy

first box all rusty in varying intensity

Box 2 - mostly rusty

Both sides big qtz eyes

Some cpy with chlonte in blebs

magic bi. chloritized

80' Fs creamy (sericite altm) bi -> "tale"

89' Sericite / kaolinite altm fairly intense

spotty for 2' then fairly intense to end of box

occasional blebs of cpy and low angle dk grey mineral
 in "shears"

Most of the fs is pale chalky green to 121'

Rusty zones compose 30% of the core

chlonte on some high angle shears

124 by this footage altm is almost nil but steep
 fract have sericite coatings on them

149-165 Local zones of buff, pink and pale green altm
 alternate with red fresh zones

Sericitized fractures continue (high level)

Local chlonte - cpy in shears

Some pyrite

177 carbonate men in low angle shear

168-188 fairly general pale green fs altm

cpy in local zones of sericite / chlonte

Men in "shears" at ~30° to core

270 Qtz - calcite veining Sericite / chlonte / cpy / pyrite steep shears

285 Rock rel. fresh again with seric. along shears

346 Rock has Kspar? introduced or pink stain anyway

to 357 local white + pale green altm
 some hematite on low angle shears

fresh altm
 w. alt zones
 some pink altm
 HOLE ENDS 382

10' 01B ~~Ru~~

10-31 Rusty red fresh qtz eye Bthoaida

local pale green altn areas

to 53 subhorizontal veining + sheeting prominent
carbonate, iron oxide

57 azurite (malachite) barite / qtz? in steep shears

65-76 Rock "pebbles" mainly possibly a shear zone

some intense altn, hematite staining

Fs @ 78 is pale yellow-green altered
ranges to buff + pale olive green } all fs gone but does
not have the chalky-look
of that in hole 3

Rusty to this level.

87' a 1' almost orange groundmass qtz fs porphyry like
lower border calcite veined + hematite veined (subhorizontal).

97-100 Horizontal sheeting + calcite / Fe oxide veining are prominent

108-120 "pea gravel"

High & shearing obvious at 136 - dk gray layers, calcite
veins, altered zones (mud-like - sericite altn?) and
rock frogs.

Rel. competent zones are pinkish buff

141 a zone of hematite veining + a 1/2" calcite vein

165-187 several ^{sericite} altered almost mud consistency zones

Rock zones tend to be stained pinkish buff

approx 1500' + drilling
at 1500' on B/L

NORANDA
CORE SHED

NORANDA
COMINCO

BETHSAIDA
CORE SHED



VALLEY
CORPOR.