

896122

DIAMOND DRILL HOLE No. 102K

X L

MINE NICKEL PLATE POSITION N4450.9 W4475.1

LOCATION 5 LEVEL--64 Top COLLAR ELEVATION 5403.0

BEARING N50° W INCLINATION +60°

REMARKS OBJECT\*-PURPLE ORE BEDS

5-26 LOWER PURPLE 37-107 UPPER PURPLE

TO	DESCRIPTION	BED. ANG.	SAMPLE				
			FROM	TO	No.	OUNCE FEET	GOLD OUNCES
5	Light speckled porphyry						
11	Chert, a little garnet	70°					
16½	X lime						
23	X lime, limey argillite, fair Aspy.		16½	23	825		.38
26	Argillite & chert banded, Pyrrhotite, sparse Aspy		23	26	826		.04
37	Chert breccia						
44	Cherty, limey argillite, Pyrrhotite, very sparse Aspy.		37	44	827		.03
57	Chert & argillite banded, garnet, sparse Aspy.		44	57	828		.05
63	Green argillite, chert, garnet, fair Aspy.	85°	57	63	829	.80	.15
71½	Ditto		63	71½	830	1.19	.14
77	Limey argillite & chert banded, good Aspy.		71½	77	831	4.18	.76
82½	Ditto but less Aspy.		77	82½	832	2.69	.49
87	Argillite & chert banded, Pyrrhotite, garnet		82½	87	830	.31	.07
91	Ditto but with fair Aspy.		87	91	833	.36	.36
107	Argillite & chert banded, Pyrrhotite, garnet 3" chert breccia at 95½		91	107	834		.07

34-.31  
19½-.39

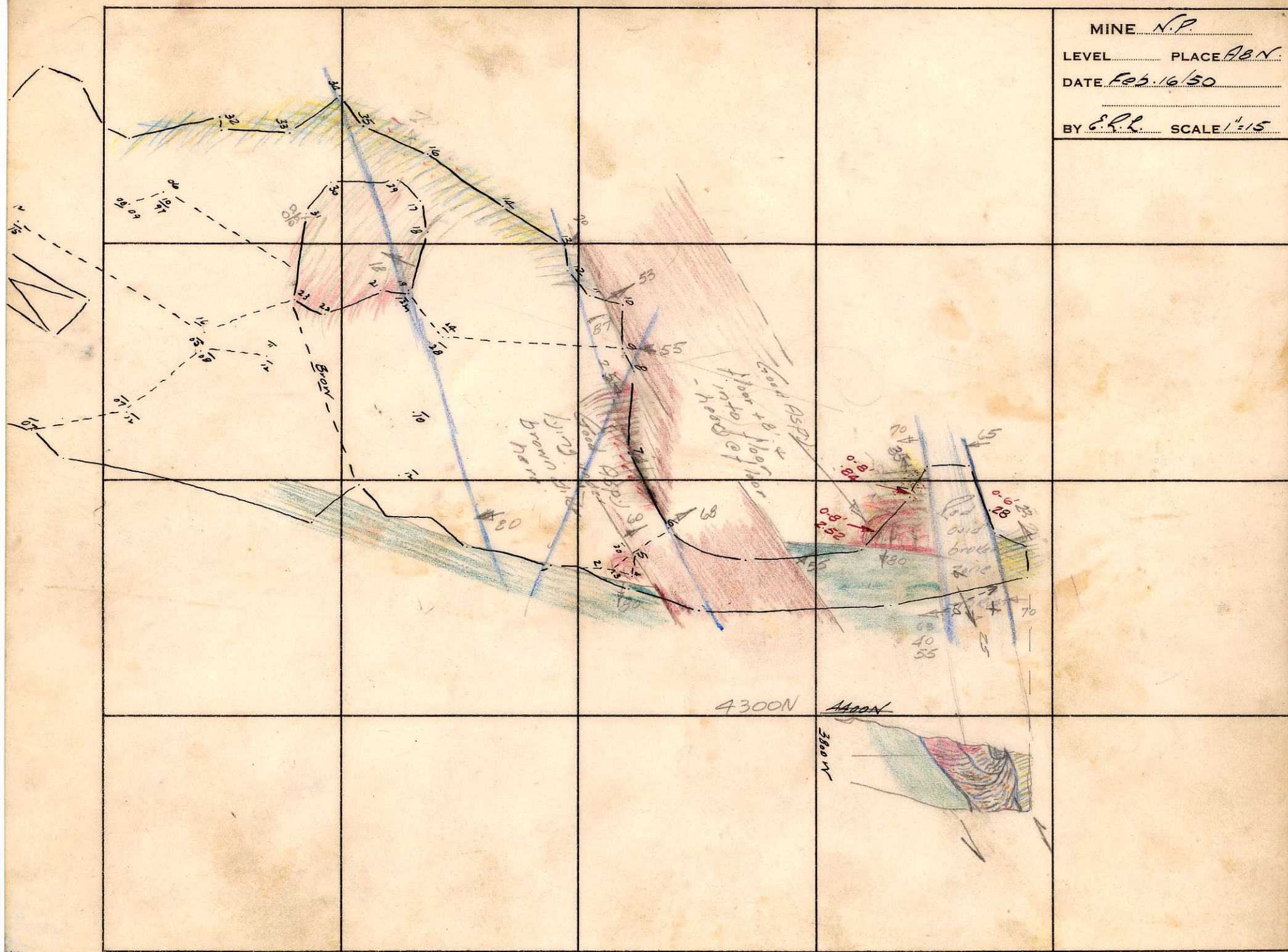


MINE N.P.

LEVEL \_\_\_\_\_ PLACE ABN.

DATE Feb. 16/50

BY E.L.L. SCALE 1"=15'



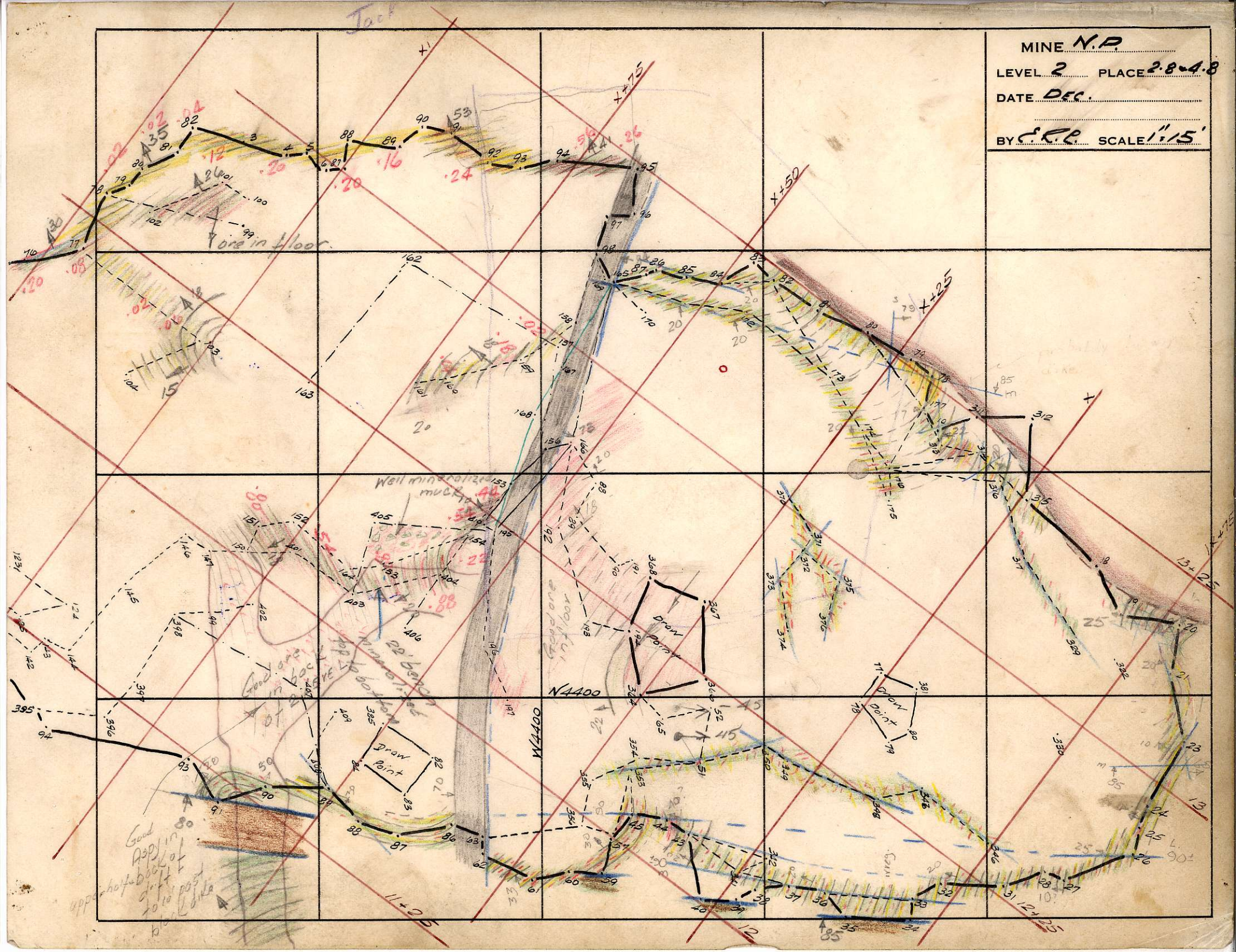


MINE N.P.

LEVEL 2 PLACE 2-8-4-8

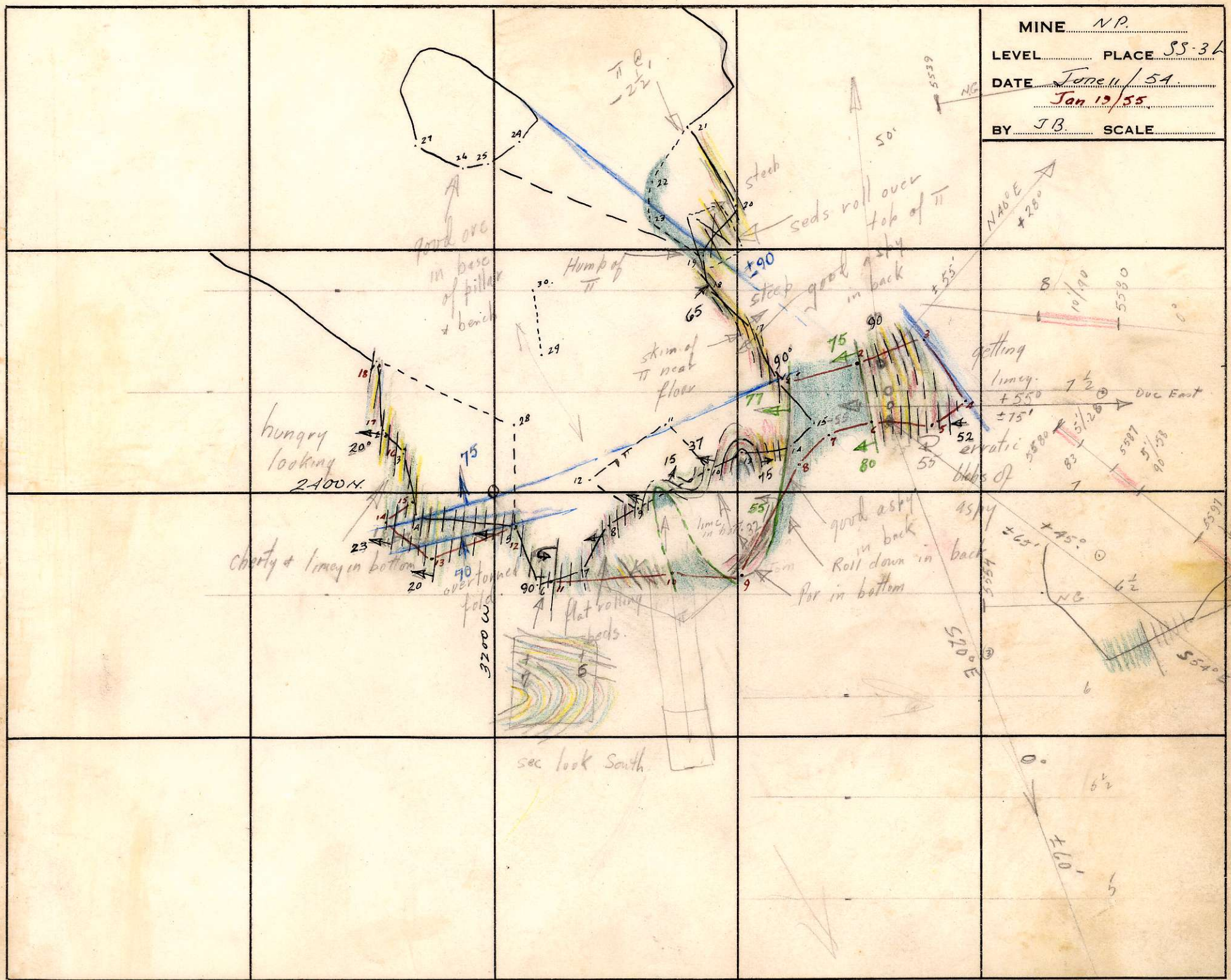
DATE Dec.

BY C.R.P. SCALE 1"=15'





MINE N.P.  
 LEVEL \_\_\_\_\_ PLACE SS-36  
 DATE Jan 11 / 54  
Jan 12 / 55  
 BY J.B. SCALE \_\_\_\_\_



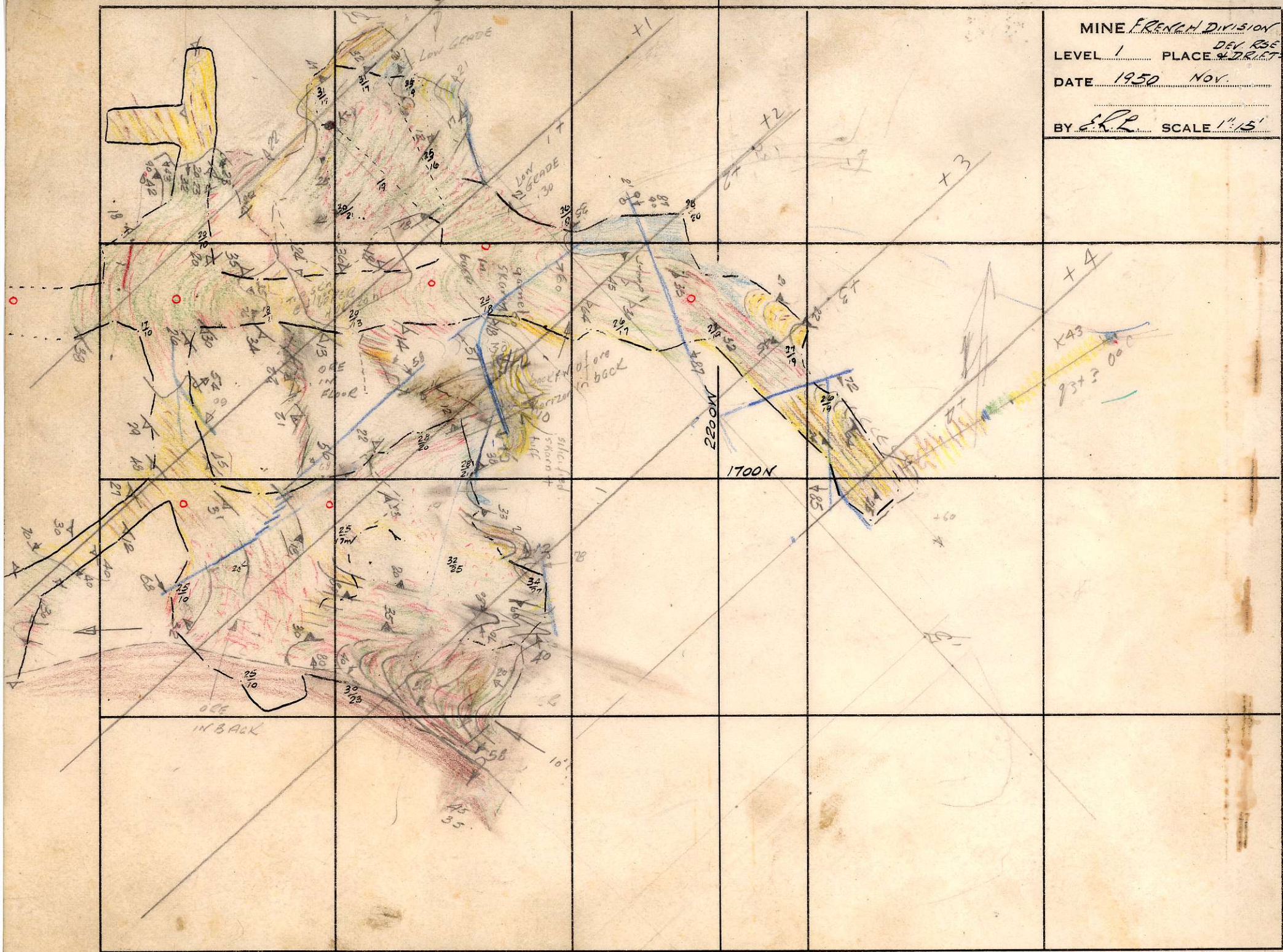


MINE FRENCH DIVISION

LEVEL 1 PLACE 47125

DATE 1950 NOV.

BY E.R. SCALE 1"=15'



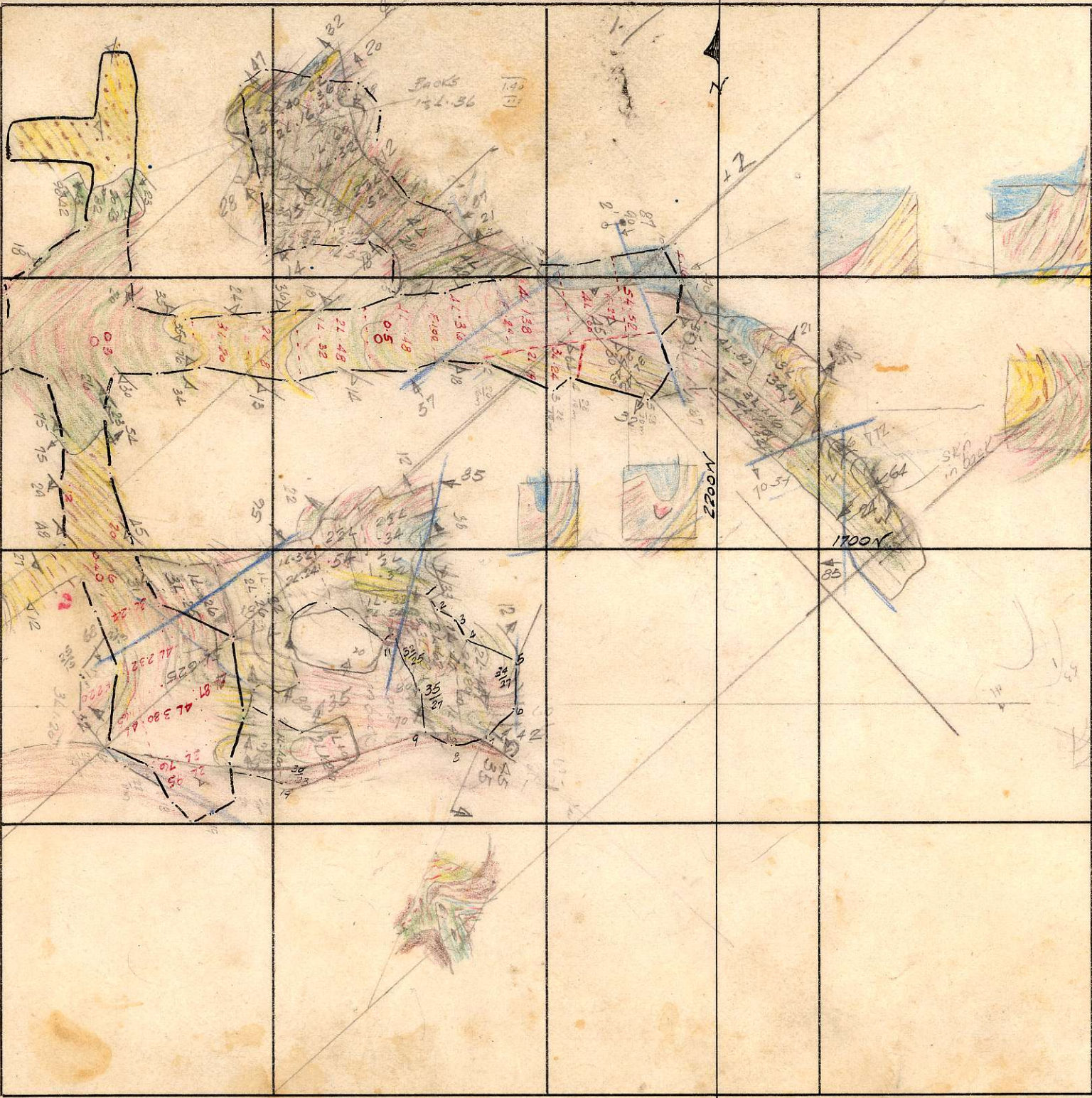


MINE FRENCH DIVISION

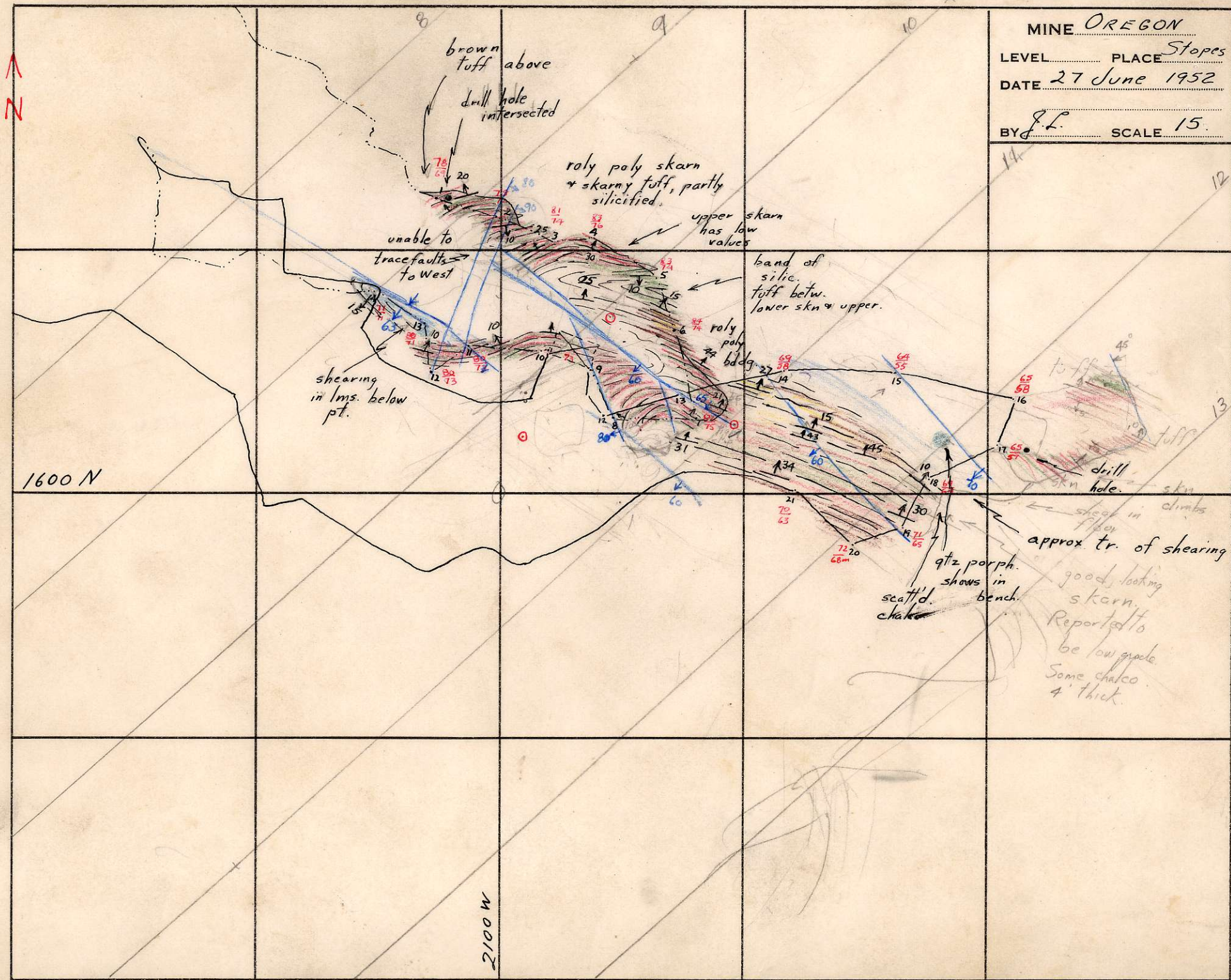
LEVEL 1 PLACE <sup>DET. BSE</sup> & DRIET

DATE JULY & AUGUST

BY E.R.R. SCALE 1"=15'





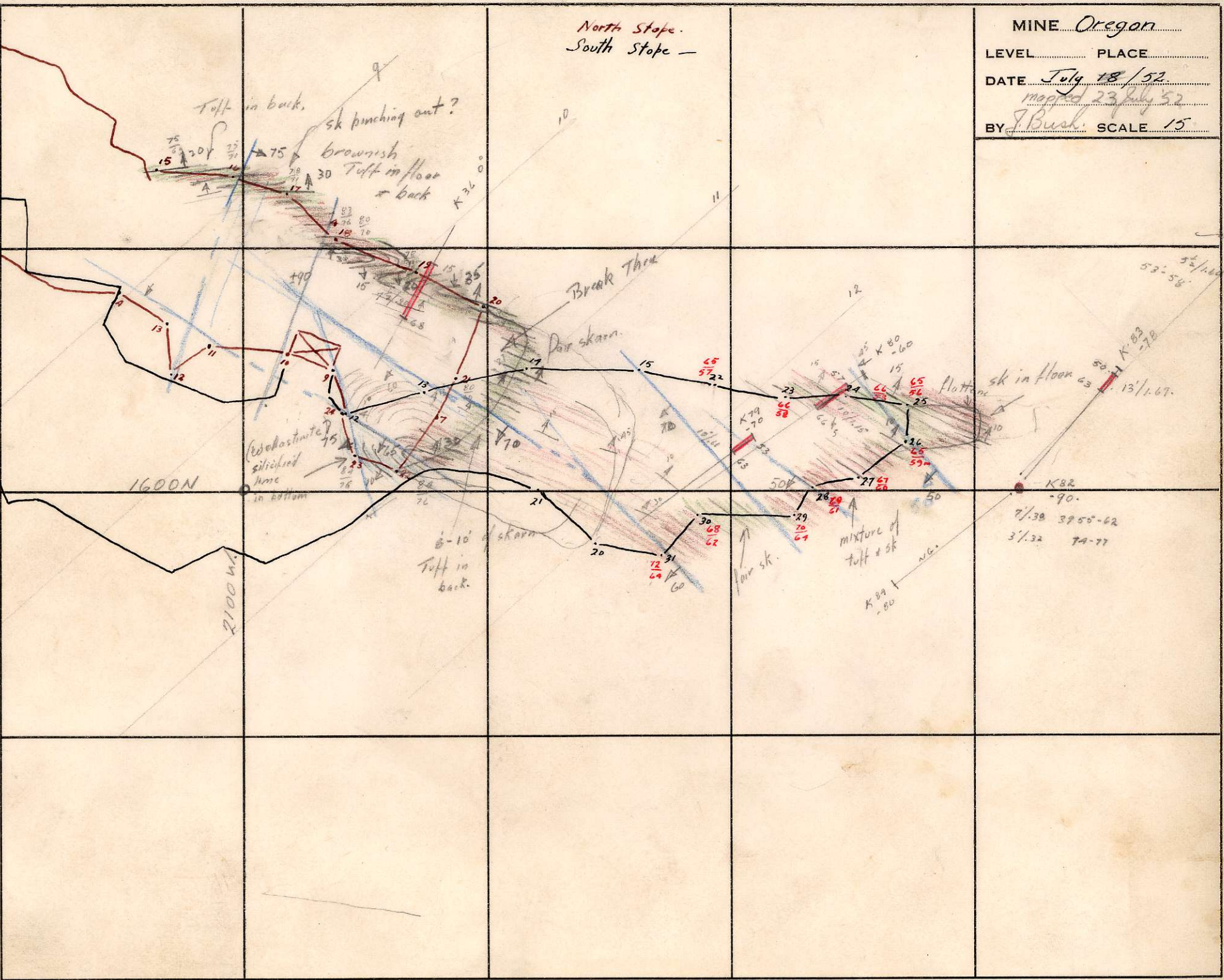




North Stope.  
South Stope -

MINE Oregon

LEVEL	PLACE
DATE	July 18/52
	mapped 23 July 52
BY	J. Bush
	SCALE 15







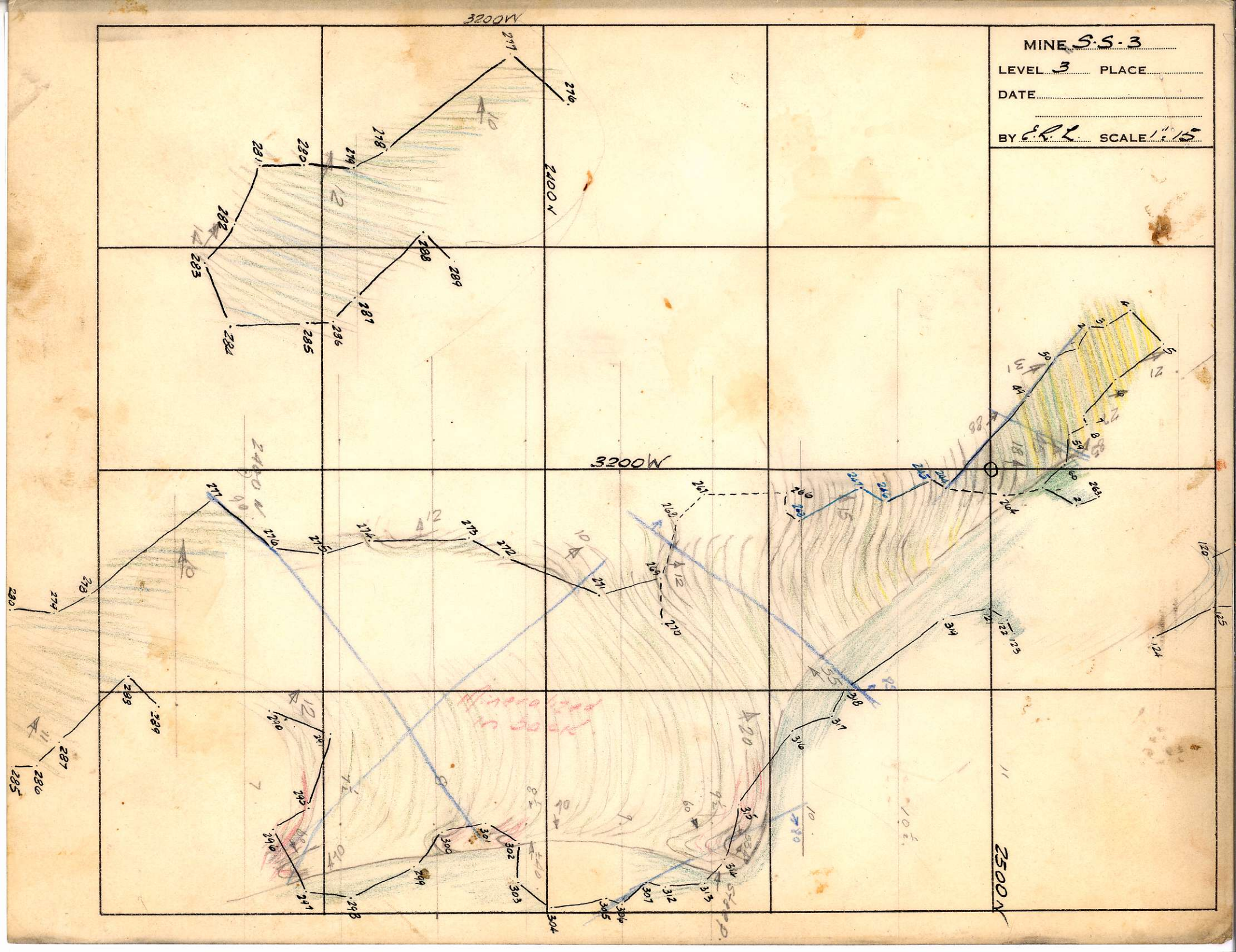


MINE S.S.3

LEVEL 3 PLACE .....

DATE .....

BY S.P.L. SCALE 1" = 15'





MINE NP

LEVEL PLACE 55.4

DATE MAY 22, 53

BY J.B. SCALE 15.

22

21

20

19

broken & disintegrated brown dike  
much breccia & rubble  
blocks of lsst & bridized material

#2

+90

3100W.

+75°  
55' white & dark altered lsst

mostly massive white lsst

blobs of ashy along Fw contact of dike

fair ashy along W contact of dike

many small fissures

massive no visible bedding

2 1/2 band of cherty skarn with good ashy near floor.

+45°  
65' #1

+60°  
1  
175'

2709

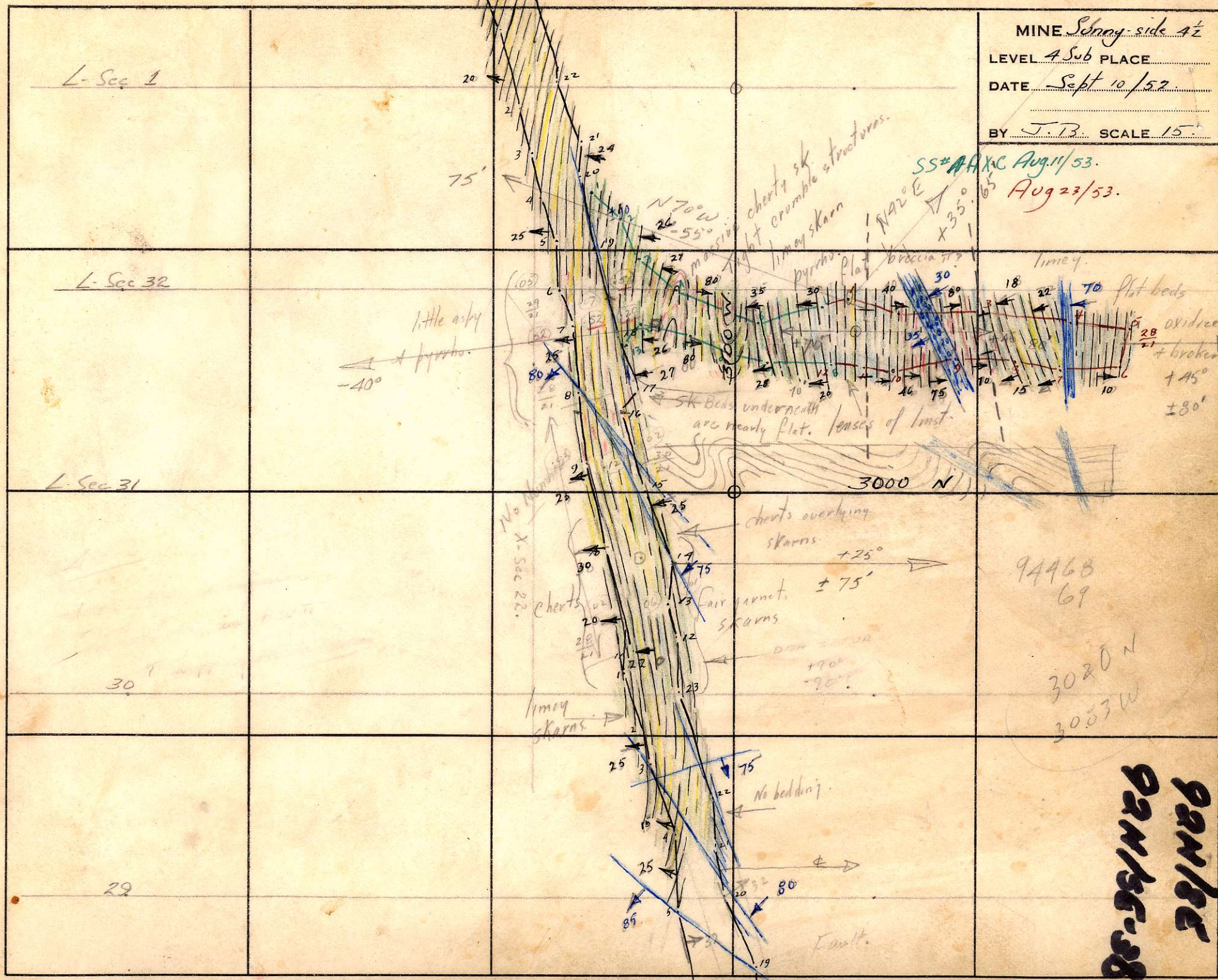
2700M

3093W  
3096

#90308



MINE *Schnoy side 4 1/2*  
 LEVEL 4 Sub PLACE  
 DATE *Sept 10/52*  
 BY *J.B.* SCALE 15'



*SS# AAXC Aug 11/53.*  
*Aug 23/53.*

*94468*  
*69*

*3020 N*  
*3053 W*

**92N/8E**  
**92N/56-38**