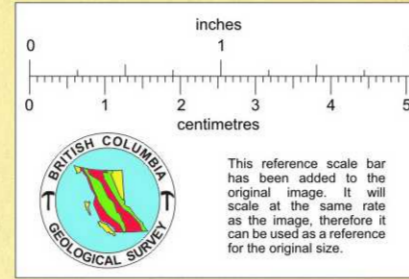
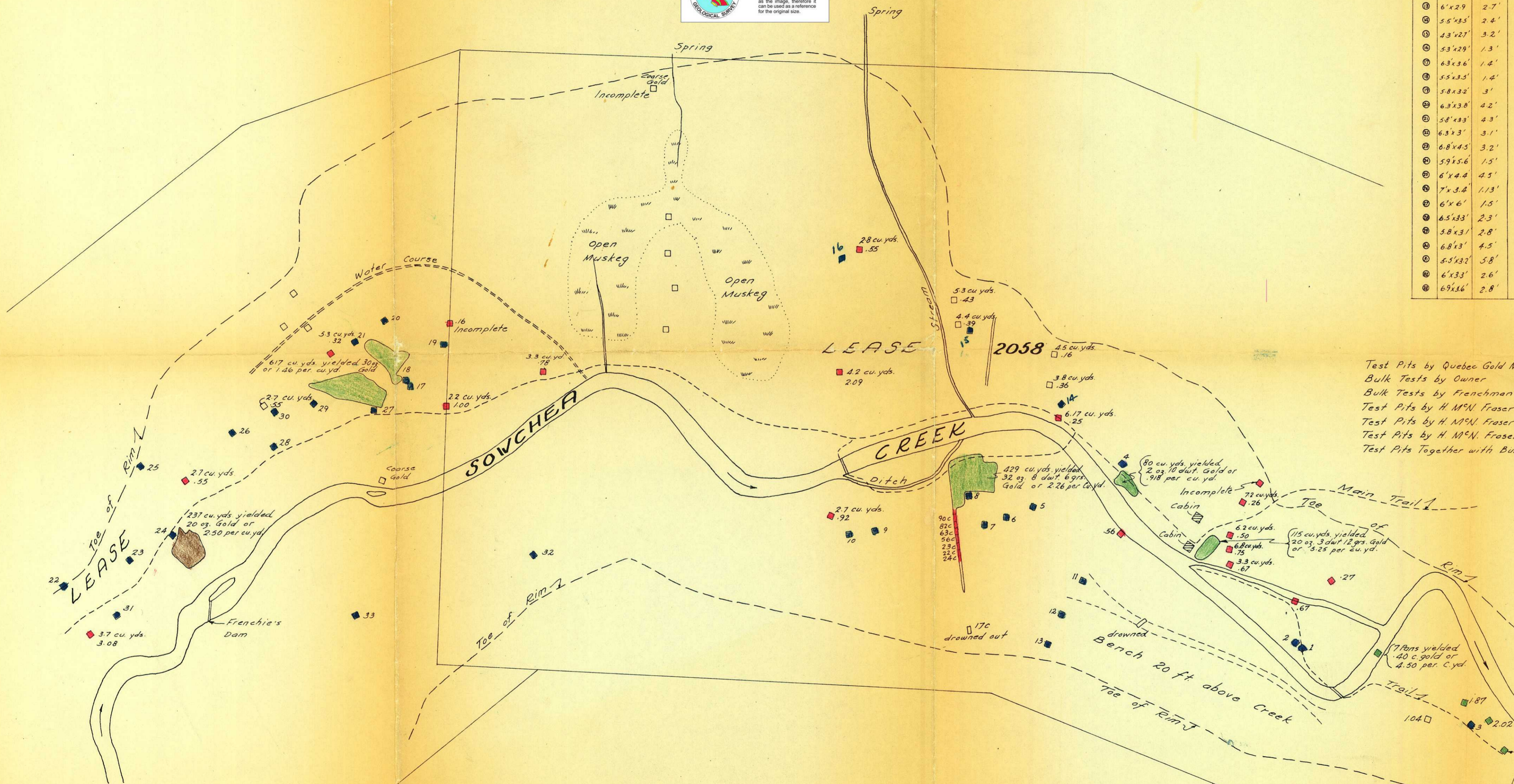


**SKETCH PLAN OF PART OF
SOWCHEA CREEK
SHOWING LOCATION OF TEST PITS
AND VALUES**
SCALE: 1 inch = 150 feet

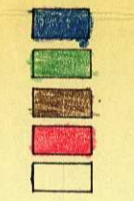


TEST PIT RECORD

Test Pit No.	Size	Total Depth	Total Cu. yds.	Gold Weight	Recovery Value @ \$33.00
1	6'x4'			1 dwt. 1.66 grs.	\$1.76 cu. yd.
2	10.5'x3'	5'	5.83	1 dwt. 6.5 grs.	\$.78 cu. yd.
3	6'x3'			4 dwt. 18.2 grs.	\$2.67 cu. yd.
4	5.75'x6'	1.04'	1.33	23.43 grs.	\$1.18 cu. yd.
5	7'x3'	2.3'	1.8	68 grs.	\$.026 cu. yd.
6	3.5'x5.5'	4.2'	2.99	8.28 grs.	\$.186 cu. yd.
7	5.5'x3.75'	3.3'	3.5	17.2 grs.	\$.328 cu. yd.
8	6'x4'	2'	1.7	1 dwt. 6.9 grs.	\$1.18 cu. yd.
9	5.8'x3.8'	3.5'	2.86	17.77 grs.	\$.42 cu. yd.
10	5'x2.8'	2.5'	1.3	12.27 grs.	\$.63 cu. yd.
11	6'x3.75'	8'	6.7	6.67 grs.	\$.067 cu. yd.
12	5'x3.6'	2.9'	1.93	2.45 grs.	\$.086 cu. yd.
13	6'x2.9'	2.7'	1.74	15 grs.	\$.006 cu. yd.
14	5.5'x3.5'	2.4'	1.8	4.52 grs.	\$.168 cu. yd.
15	4.3'x2.7'	3.2'	1.4	5.23 grs.	\$.25 cu. yd.
16	5.3'x2.9'	1.3'	.74	683 grs.	\$.062 cu. yd.
17	6.3'x3.6'	1.2'	1.18	11.93 grs.	\$.68 cu. yd.
18	5.5'x3.5'	1.4'	1.0	5.56 grs.	\$.372 cu. yd.
19	5.8'x3.2'	3'	2.1	8.58 grs.	\$.274 cu. yd.
20	6.3'x3.8'	4.2'	3.13	2.3 grs.	\$.05 cu. yd.
21	5.8'x3.3'	4.3'	3.05	1 dwt. 7.57 grs.	\$.707 cu. yd.
22	6.3'x3'	3.1'	2.2	28 grs.	\$.01 cu. yd.
23	6.8'x4.5'	3.2'	3.62	3 dwt. 5.23 grs.	1.464 cu. yd.
24	5.9'x5.6'	1.5'	1.84	3.9 grs.	\$.141 cu. yd.
25	6'x4.4'	4.5'	4.4	9.1 grs.	\$.14 cu. yd.
26	7'x3.4'	1.13'	1.	12.47 grs.	\$.835 cu. yd.
27	6'x6'	1.5'	2.	5 dwt. 20.1 grs.	4.80 cu. yd.
28	6.5'x3.3'	2.3'	1.8	14.15 grs.	\$.53 cu. yd.
29	5.8'x3.1'	2.8'	1.86	17.23 grs.	\$.618 cu. yd.
30	6.8'x3'	4.5'	3.4	9 grs.	\$.177 cu. yd.
31	5.5'x3.2'	5.8'	3.78	2 dwt. 12.74 grs.	\$.618 cu. yd.
32	6'x3.3'	2.6'	1.9	9 grs.	\$.317 cu. yd.
33	6.9'x3.6'	2.8'	2.6	22.7 grs.	\$.585 cu. yd.



Test Pits by Quebec Gold Mining Corp.
 Bulk Tests by Owner
 Bulk Tests by Frenchman
 Test Pits by H. McN. Fraser
 Test Pits by H. McN. Fraser, below Commercial Value
 Test Pits by H. McN. Fraser, average value 87c per cu. yd.
 Test Pits Together with Bulk Tests show value of \$1.30 per cu. yd.



King's Shaft
 Panning Samples
 from dump give Values from
 25c to \$12.00 per cu. yd.

H. McN. Fraser
 Engineer at Placers