

1755 - (1092115)

Twin Lakes Gold Mining Co., Ltd. -

(See Annual Reports, 1933 and 1934)

also under Huntsman and Juniper 1924 and 1933;
B.E. Mining Company, 1929 to 1931; Parvenne
Mines 1932) This mine remained idle

throughout most of the year, except for a
small amount of underground development
done during the months of June and July.
The milling plant was operated on ore
from the Grandoro mine.

895236

Twin Lakes

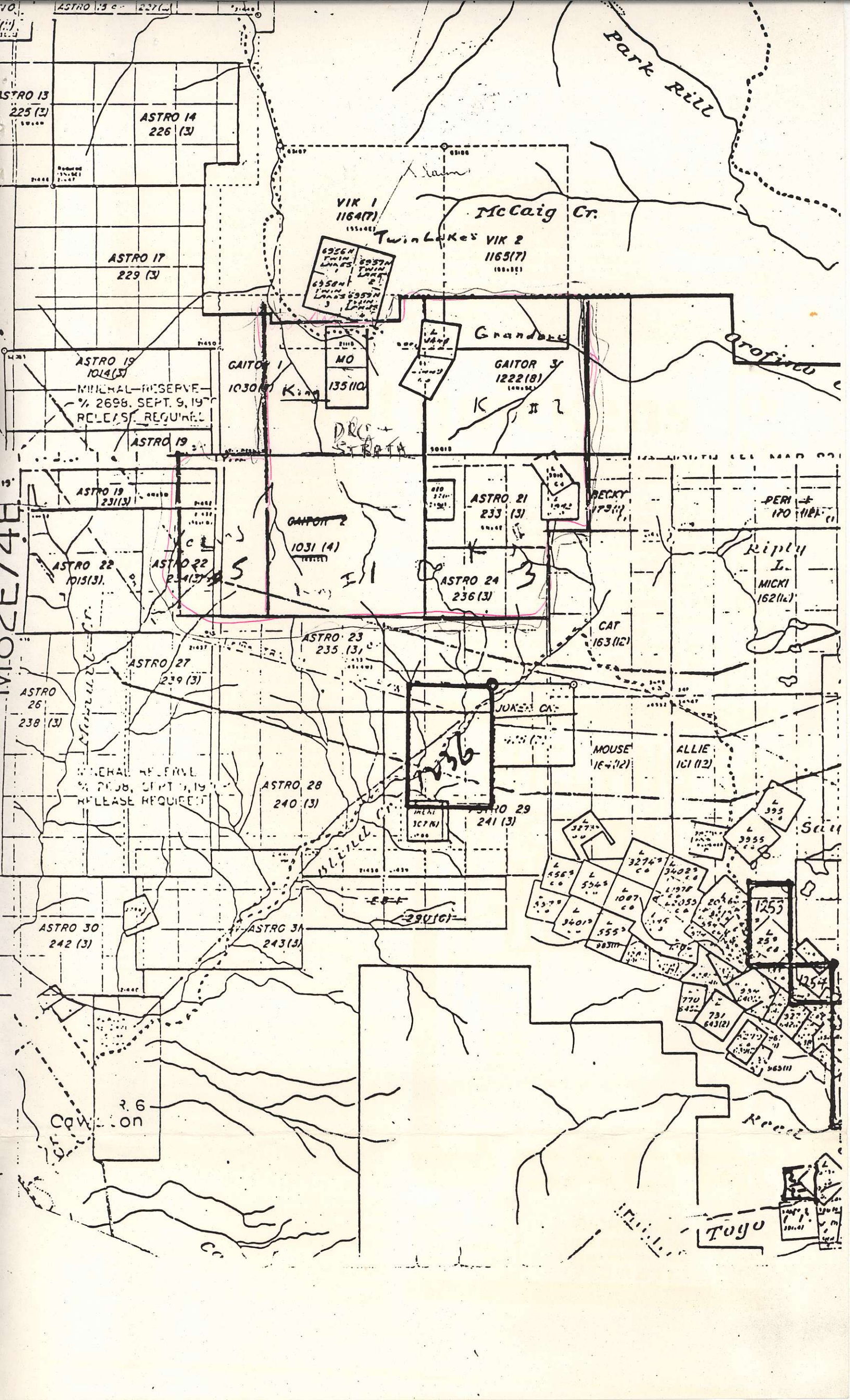
D 54

Minister of Mines Report -

1936 - "Twin Lakes Area

— Gold Standard (Fairview) Mining Co. -

Joseph Wakelich, manager. This company operated on the Twin Lake property, situated 24 miles south-west of Penticton and at an elevation of 4,700 feet. The ore is transported by truck from the mine bunkers to the 40-ton mill on the property. Ten men were employed.



ASTRO 13 c 227(1)

ASTRO 13
225 (3)

ASTRO 14
226 (3)

ASTRO 17
229 (3)

VIK 1
1164(7)

McCaig Cr.

Twin Lakes VIK 2
1165(7)

ASTRO 19
1014(3)

MINERAL RESERVE
% 2698, SEPT. 9, 1977
RELEASE REQUIRED

ASTRO 19

GAITOR 1
1030(4)

MO
135(10)

GAITOR 3
1222(8)

ASTRO 19
231(3)

ASTRO 22
1013(3)

ASTRO 22
234(3)

GAITOR 2
1031(4)

ASTRO 21
233(3)

RECKY
179(1)

PERI
170(11)

Ripley I.
MICKI
162(12)

ASTRO 26
238(3)

ASTRO 27
239(3)

ASTRO 23
235(3)

ASTRO 24
236(3)

CAT
163(12)

GENERAL RESERVE
% 2698, SEPT. 9, 1977
RELEASE REQUIRED

ASTRO 28
240(3)

ASTRO 29
241(3)

MOUSE
164(12)

ALLIE
161(12)

ASTRO 30
242(3)

ASTRO 31
243(3)

327
5569
5545
1087
34019
5553
32769
34029
11978
20359
3955
395
1255
770
731
643(2)

Cawston
R. 6

Tuyo