

895224

*AOM Minerals Ltd.
Phase I & Phase II Exploration Program
Maybe Property 092E.046*

AOM MINERALS LTD.

Report on the Phase I & Phase II Exploration Program

on the

Maybe Property

(Tenures 513919 & 530404)

Greenwood M.D.

N.T.S.M082E.046

November 26, 2007

Sookochoff Consultants Inc.

Page 1 of 12

AOM Minerals Ltd.
Phase I & Phase II Exploration Program
Maybe Property 092E.046

Table of Contents

	page
Introduction -----	3.
Maybe Property -----	3.
Exploration on the Maybe Property	
Phase I Exploration Program -----	4.
Phase II Exploration Program -----	6.
Conclusions -----	7.
References -----	8.
Certificate -----	9.

Illustrations

Figure 1.	Location Map -----	following page 3.
Figure 2.	Claim Location -----	following page 3.
Figure 2a.	Geology -----	following page 4.
Figure 3.	Topographical Map -----	following page 5.
Figure 3a.	Claim & Index Map -----	following page 6.
Figure 4	Magnetometer Survey (Raw Data) -----	Appendix II.
Figure 5	Magnetometer Survey – (Contoured) -----	Appendix II.
Figure 6	VLF-EM Survey (Fraser Filtered Data) -----	Appendix II.
Figure 7	VLF-EM Survey (Fraser Filtered Data Contoured) ----	Appendix II.

Appendices

Appendix I	Sample Assay Sheet (Phase I)
Appendix II	Magnetometer & VLF-EM Survey Maps (Figures 4-7)

INTRODUCTION

This report presents the information and results on the completion of the Phase I and the Phase II exploration on the Maybe property which were recommended by James W. McLeod, P. Geo. in a report for AOM Minerals Ltd. dated May 29, 2006 (McLeod Report).

For a complete report on the property, the reader is referred to the McLeod Report entitled "Review and Recommendations, The Maybe Property, Kettle River Region, Map 82E/7, Beaverdell Area, British Columbia, Canada".

Information for this report was obtained from sources as cited under Selected References, from personal reports the writer has written on mineral properties within the Maybe Property area, and from the information contained within the McLeod Report.

MAYBE PROPERTY

The property consists of two claims comprised of 10 contiguous cells covering an area of 518.9 acres (209.95 hectares). Particulars are as follows:

<u>Claim Name</u>	<u>Cells</u>	<u>Tenure No.</u>	<u>Expiry Date</u>
Kenrick #1	9	513919	June 03, 2008
Hard To Beat	1	530404	March 22, 2008

The McLeod Report provides information on the location, access, infrastructure, physiography, history, geology, and mineralization of the Maybe Property. Summarizing this information is as follows.

Location is in the Beaverdell area, south-central British Columbia, Canada.

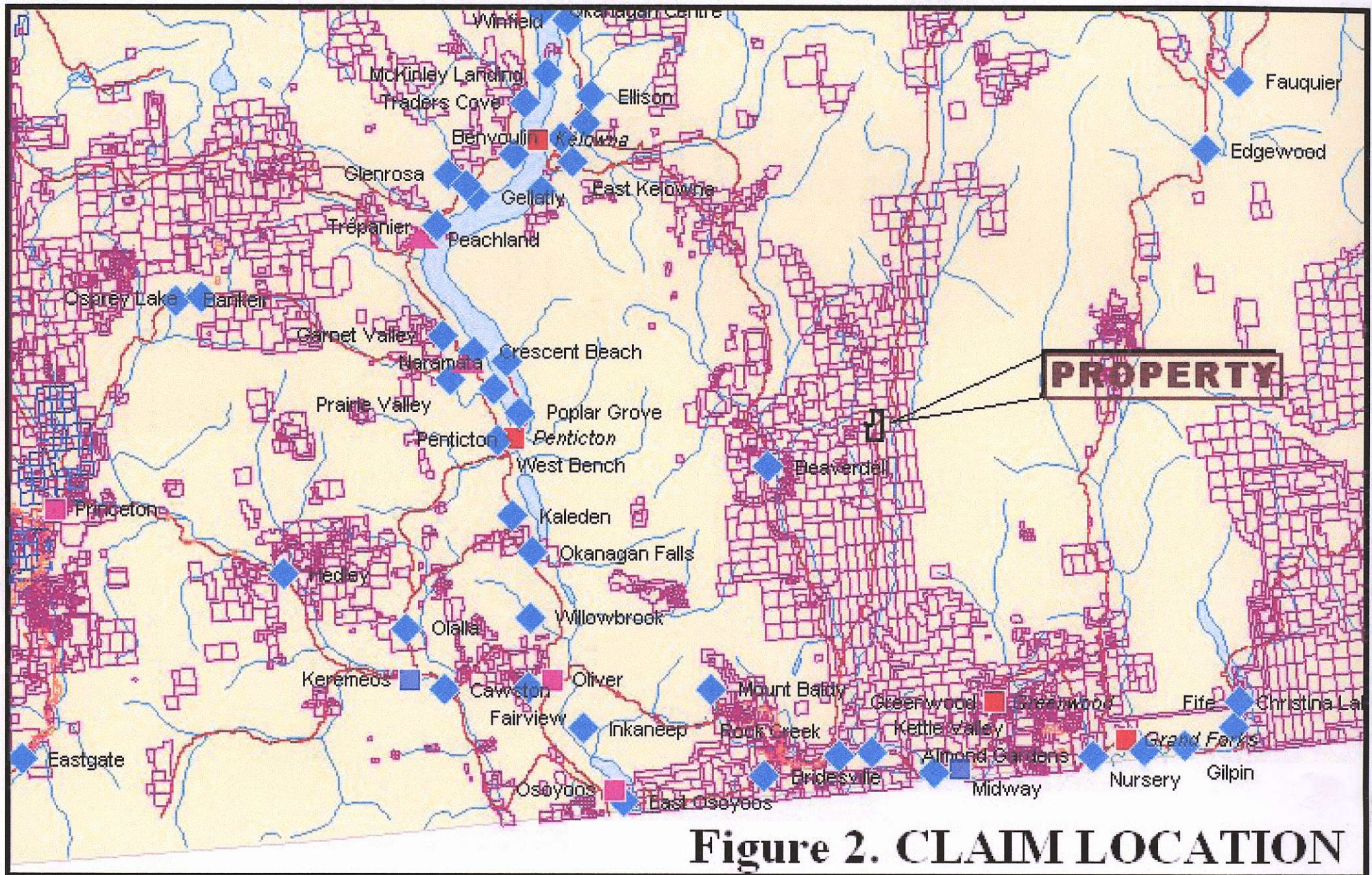
Access is northward from Rock Creek along Provincial Highway #33 for 9.5 miles to Westbridge thence northward along the Christian Valley road for 22 miles.

Infrastructure could be from provided from the city of Kelowna, 78 miles north-northwest of Rock Creek, where all of the necessary requirements are available to base and carry out an exploration program.

AOM MINERALS LTD.



AOM MINERALS LTD.



AOM Minerals Ltd.
Phase I & Phase II Exploration Program
Maybe Property 092E.046

MAYBE PROPERTY (cont'd)

Physiography of the Property is of rounded, mountainous terrain with elevations ranging from 2,400 feet to 3,500 feet above mean sea level.

History of the Maybe property stems from 1903-1904 when claims were crown-granted (patented) covering the present included Maybe property. During the period 1938-1940 production from the property is reported as 488 tons with a recovery of 315 ounces of gold, 549 ounces of silver, 260 pounds of copper, and 39 pounds of lead.

Geology of the Maybe property is of a northerly trending contact between the Carboniferous to Permian Anarchist Group, comprised of greenstone, greenschist, and metamorphic rocks (CPAS), and the Eocene Penticton Group comprised of undivided volcanic rocks. The contact is represented by a fault zone forming the western flank of the Toroda Graben. The Maybe (past producer) mineral zone (Minfile 082SE246) and the Riverside showing (Minfile 082SE253) are located proximal to the fault zone contact within the Anarchist Group.

Mineralization on the Maybe property occurs at the Maybe mineral zone and the Riverside mineral showing. The mineralization at the Maybe mineral zone is reported (MINFILE) as pyrite, pyrrhotite, arsenopyrite, sphalerite, and minor chalcopyrite hosted by a northerly striking, 50 degree, east dipping quartz vein. At the Riverside mineral showing the mineralization is reported (MINFILE) as pyrite, pyrrhotite, arsenopyrite, sphalerite, and chalcopyrite hosted by northwest-trending quartz veins, occurring in andesites of the Anarchist Group.

Exploration on the Maybe Property

Phase I Exploration Program

The program consisted of reconnaissance prospecting, hand trenching and sampling of the mineralized material encountered during the program. The work program was conducted by Interloc Holdings Ltd. of Vancouver, B.C. during the period July 20-27, 2006.

The results of the work were that rocks encountered at the four sample locations, Maybe Trench #1; Maybe Trench #2; Maybe Adit; and Maybe Adit Dump are all of oxidized and crystalline volcanic and/or volcanoclastic tuffaceous rock units.

Sookochoff Consultants Inc.

November 26, 2007

Page 4 of 12

AOM MINERALS LTD.

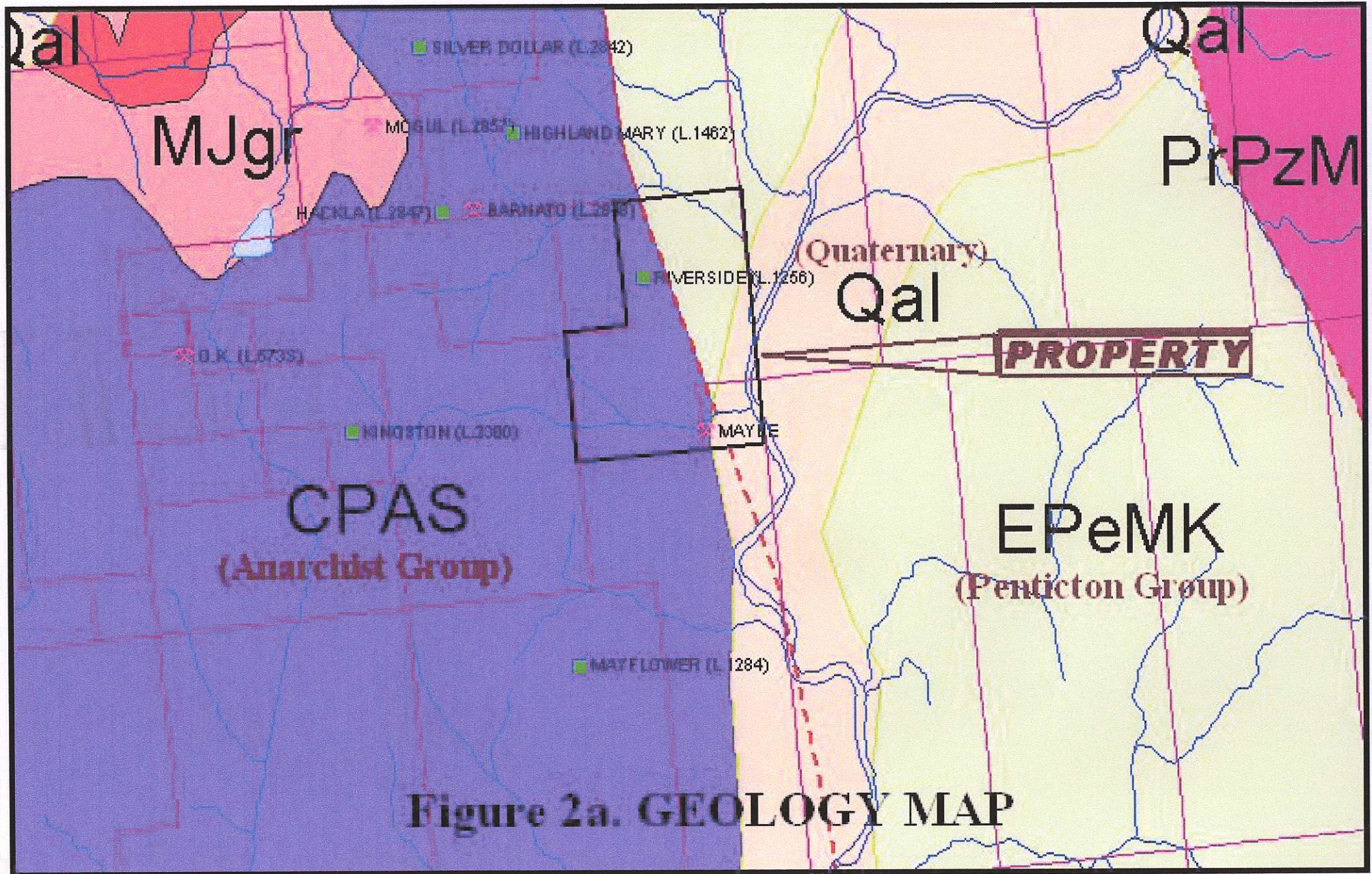


Figure 2a. GEOLOGY MAP

AOM Minerals Ltd.
Phase I & Phase II Exploration Program
Maybe Property 092E.046

Phase I Exploration Program (cont'd)

The following lists the reported samples taken, the description thereof, and the assay results.

Sample Number	Type	Remarks *	Description
Maybe Adit	Grab-chip	1819 ppb Au 0.64 Toz. Ag	Fine grained Brown rusty tuff.
Maybe Dump	Grab-chip	199 ppb Au 0.12 Toz. Ag	Clastic, fragmental Flow, rusty color.
Trench 1	Grab-chip	65 ppb Au	Rusty flow rock.
Trench 2	Grab-chip	66 ppb Au	Rusty crystal tuff.

- See assay sheet (Appendix I) for complete assay results.
-

The attached induced coupled plasma (ICP) and geochemical analyses (Appendix I) for the above listed samples reveal a number of anomalous results. All of the samples of volcanic rocks units in this area appear anomalous in copper within the range of 390 ppm – 819 ppm (parts per million). All four samples are also anomalous in gold with values ranging from 65 ppb to 1819 ppb (parts per billion). Sample Maybe Adit and Dump are higher in arsenic at 167 ppm and 138 ppm respectively.

In conclusion, it was reported that zone(s) of anomalous copper has been encountered during the reconnaissance prospecting, trenching and sampling program conducted over portions of the Maybe mineral property. On the basis of a confirmation of historical reports of copper (gold) mineralization the Phase II program of the McLeod report were recommended. The Phase II program was to consist of magnetometer and VLF electromagnetic, grid controlled surveys over the area of interest determined by the Phase I survey.

AOM MINERALS LTD.

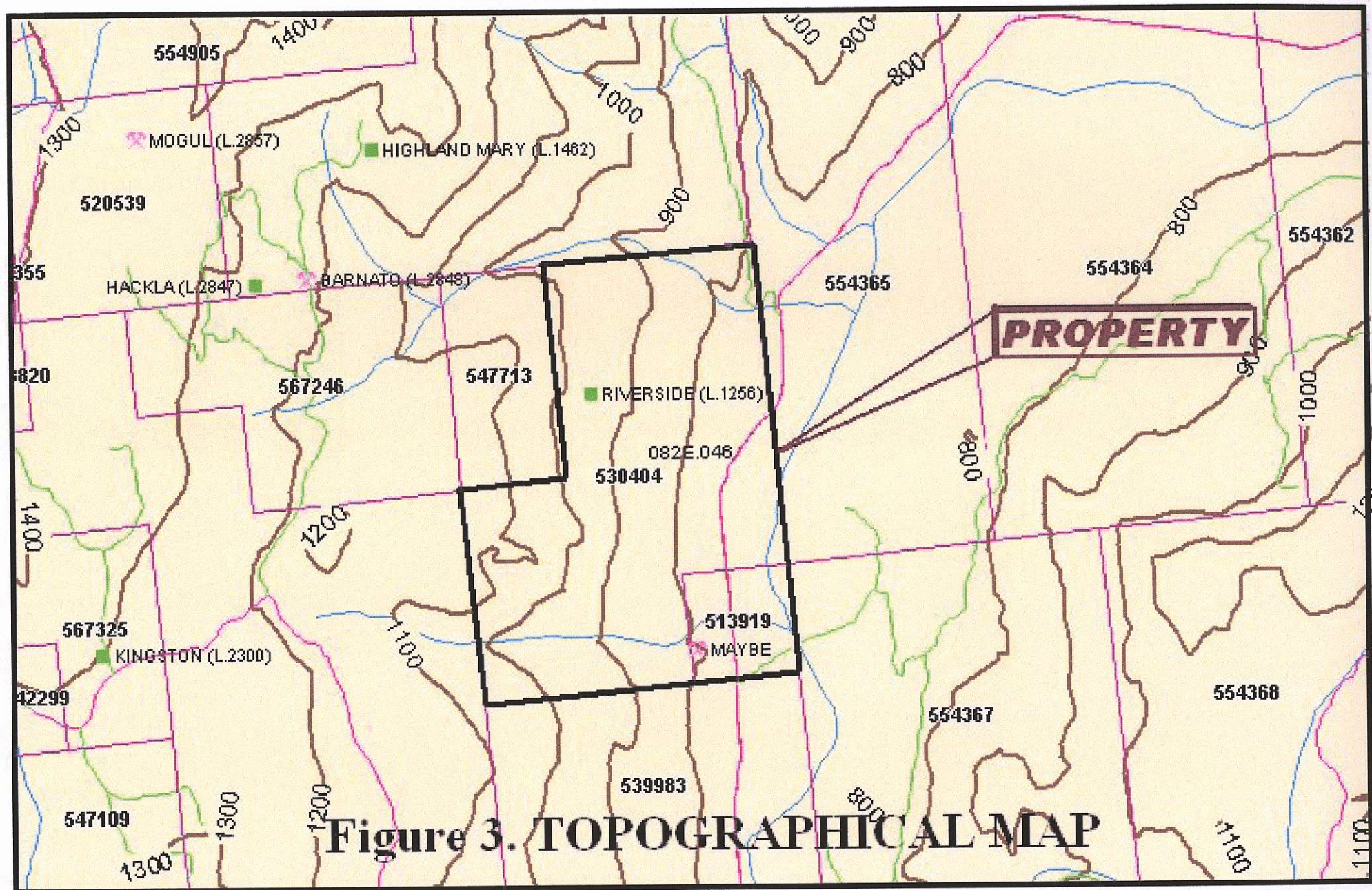


Figure 3. TOPOGRAPHICAL MAP

AOM Minerals Ltd.
Phase I & Phase II Exploration Program
Maybe Property 092E.046

Phase II Exploration Program

As a result of the completion of, and the favorable results from the Phase I exploration program, the Phase II exploration program was initiated and completed. The Phase II exploration program, as recommended in the McLeod Report, consisted of a VLF-EM and magnetometer survey.

The magnetometer and VLF-EM surveys were performed within a controlled grid covering an area of 1,300 feet east-west by 3,000 feet north-south centred on the Maybe mineral showing with the survey results indicated on Figures 4, 5, 6, and 7 (Appendix II).

The results of the surveys are inconclusive. The results of the magnetometer survey indicated a variation of some 1,000 gammas with the highest variation in the northern portion of the survey area where a localized "anomalous bullet" condition would be considered. The low magnetic variation, considering the volcanic/metamorphic geology of the Property, a high degree of gamma variance would indicate a potential structure or mineralization, in the absence of magnetite, which may host mineralizing fluids. There are not any magnetic lows and/or trends that would indicate structures or mineralization. The magnetometer results do not demonstrate any indication of the Maybe mineral showing (as indicated by MINFILE) in the southern portion of the survey area or the sampled adit zone which may be the actual location of the Maybe mineral showing.

The VLF-EM survey was extremely static with the only a localized low sub-anomalous condition north of and proximal to the magnetic "anomaly". The sub-anomaly is of a very minor degree that it would be considered insignificant. The VLF-EM results do not demonstrate any indication of the Maybe mineral showing in the southern portion of the survey area or the sampled adit zone which may be the actual location of the Maybe mineral showing.

AOM MINERALS LTD.

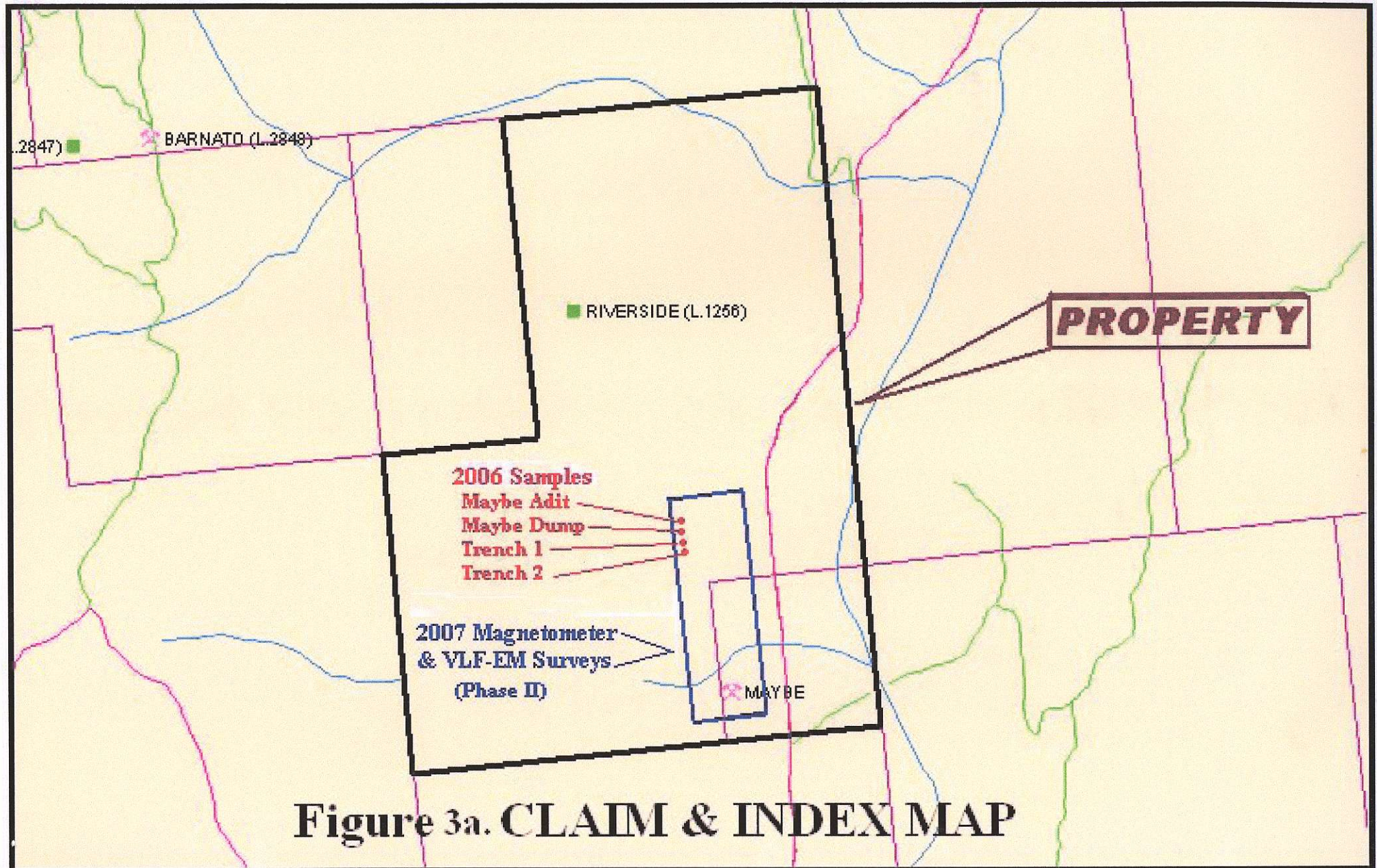


Figure 3a. CLAIM & INDEX MAP

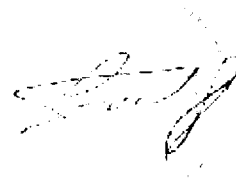
*AOM Minerals Ltd.
Phase I & Phase II Exploration Program
Maybe Property 092E.046*

CONCLUSIONS

The VLF-EM and magnetometer survey results did not indicate any anomalous condition to correlate with, or in the area of the Maybe mineral showing, nor any indication of potential mineralized zones that may be associated. The northern portion of the survey, where samples were taken from the adit, adit dump, and trenches with encouraging results indicating a zone of potential economic mineralization, the survey results failed to indicate any mineral zone or mineral controlling structure. The generally correlative, localized low to sub-anomalous zones in this immediate area, are attributed to minor variations in the volcanics (magnetic disparity) caused from a low degree of variable metamorphism and/or volcanic flow contacts (VLF-EM) within the Anarchist Group of rocks.

Therefore, the discouraging survey results do not provide any area for the continuance of exploration.

Respectfully submitted
Sookochoff Consultants Inc.



Laurence Sookochoff, P.Eng.

Vancouver, BC

*AOM Minerals Ltd.
Phase I & Phase II Exploration Program
Maybe Property 092E.046*

References

- Allen, G. - Geological - Geochemical Report on the RCJV No. 24 Property of Rock Creek Joint Venture. November 1, 1981. AR 9,806.
- Baines, H.L. - Geochemistry of Hydrothermal Ore Deposits, J.Wiley and Sons, Inc., New York, 1979.
- Boyle, R.W. - The Geochemistry of Gold and its Deposits, Energy, Mines and Resources Canada. Bulletin 280, 1979.
- Brown, E.R. - Exploration Geology of the Golden Promise Discovery, Republic Mining District, Washington, undated abstract.
- Brox, D. -- Unpublished report to Silverleaf Resources Ltd. on the geology and sampling of the eastern and western sectors of correlative anomalous soil geochemical zones on the Cann 2 mineral claim. June, 1984.
- Cairnes, C.E. - Mineral Deposits of the West Half of Kettle River Area, British Columbia. Canada Department of Mines and Resources, Mines and Geology Branch, Bureau of Geology and Topography, Geological Survey. Paper 37-21. June, 1937.
- Cockfield, W.E. - Lode Gold Deposits of Fairview Camp, Camp McKinney and Vidette Lake Area and the Dividend-Lakeview Property near Osoyoos, B.C., Memoir 179. 1935.
- Dawson, J.M. - Report on the Sylvester K Property for Kettle River Resources Ltd..
September 20, 1982.
- Elevatoroski, E.A. - Gold Mines of the World, Minobras, Dana Point, California 1981.
- Hedley, M.S. - Geology of Camp McKinney and of the Cariboo-Amelia Mine, Similkameen District. British Columbia Department of Mines, Bulletin No. 6. 1940.
- Map 15-1961 - Kettle River (West Half) British Columbia. G.S.C. Ottawa 1961.
- Map 6-1957 - Kettle River (East Half) British Columbia. G.S.C. Ottawa 1961.
- Mark, D.G. - Geochemical/ Geophysical Report over the Cann 1 Claim for Golden Chance Resources Inc. November 8, 1983. AR 12,553.

*AOM Minerals Ltd.
Phase I & Phase II Exploration Program
Maybe Property 092E.046*

References (cont'd)

- Mark, D.G. - Geochemical/Geophysical Report on the Cann 1 Claim for Golden Chance Resources Inc. September 25, 1985. AR 13,883.
- Fox, P.E. – Soil Geochemical Report on the Cleaver 1 to 4 Claims for Phelps Dodge Corporation of Canada, March 3, 1994. AR 23,835.
- McLeod – Review and Recommendations The Maybe Property for AOM Minerals Ltd..
May 29, 2006.
- MINFILE No. 082SE253 – Riverside (L.1256), Hard To Beat (L.2846), Globe (L2402).
- MINFILE No. 082SE246 – Maybe, Trapper (L.1476).
- Monger, J.W.H. - Early Tertiary Stratified Rocks, Greenwood Map-Area, B.C. Dept. of Energy, Mines and Petroleum Resources. Paper 67-42.
- Partridge, G. - Geological, Geochemical and Geophysical Report on the Saaga Property for Saga Resources Ltd. June, 1987. AR 16,346.
- Pringle, D.W. - Report on the Bluejay Claims 1-4 for Titan Resources Ltd. November 7, 1983.
AR 13,496.
- Sookochoff, L. - Interim Exploration Report for Silverleaf Resources Ltd. on the Cann 2 Mineral Claim. November 4, 1983.
- Interim Exploration Report for Golden Chance Resources Inc. on the Cann 1 Mineral Claim. November 15, 1983.
- Geochemical Assessment Report on the Lar Claim Group. August 13, 1996.
AR 24,525.
- Geological Evaluation Report on the Lar Claim Group for Probe Resources Ltd. July 21, 1996.
- Geochemical Assessment Report on the LAR Claim Group for AOM Minerals Ltd. August 13, 1996.
- Geological Assessment Report on the Larry Claim. August 26, 1998.
AR 25,632.
- Watt, D.D. – Assessment Report for the Amp 1, Amp 2, Amp 3, Amp 4 Claims.
August 27, 1990. AR 20,215.

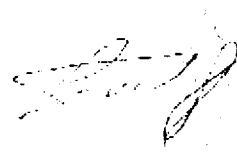
AOM Minerals Ltd.
Phase I & Phase II Exploration Program
Maybe Property 092E.046

Certificate

I, Laurence Sookochoff, of the City of Vancouver, in the Province of British Columbia, do hereby certify that I am a Consulting Geologist with an address at 120 125A-1030 Denman Street Vancouver, BC V6G 2M6.

I, Laurence Sookochoff, further certify that:

- 1) I am a graduate of the University of British Columbia (1966) and hold a B.Sc. degree in Geology.
- 2) I have been practicing my profession for the past forty-one years.
- 3) I am registered and in good standing with the Association of Professional Engineers and Geoscientists of British Columbia.
- 4) Information for this report was obtained from sources as cited under the Reference section of this report and from work performed on mineral properties within the immediate area.
- 5) I do not have any interest in AOM Minerals Ltd. nor in the property as described herein.



Laurence Sookochoff, P. Eng.

Vancouver, B.C.

November 26, 2007

Sookochoff Consultants Inc.

Page 10 of 12

AOM Minerals Ltd.
Phase I & Phase II Exploration Program
Maybe Property 092E.046

Appendix I

Sample Assay Sheet (Phase I)



Assayers Canada
8282 Sherbrooke St.
Vancouver, B.C.
V5X 4R6
Tel: (604) 327-3436
Fax: (604) 327-3423

Geochemical Analysis Certificate

6V-1519-RG1

Company: **Interloc Holding LTD.**
Project: **Maybe**
Attn: **Larry Sostad**

Aug-11-06

We hereby certify the following geochemical analysis of 4 rock samples submitted Aug-02-06

Sample Name	Au ppb
MAYBE ADDIT	1819
MAYBE DUMP	199
TRENCH 1	65
TRENCH 2	66
*Au5	1419
*BLANK	<1

Certified by _____

AOM Minerals Ltd.
Phase I & Phase II Exploration Program
Maybe Property 092E.046

Appendix II

Magnetometer & VLF-EM Survey Maps

Figures 4-7



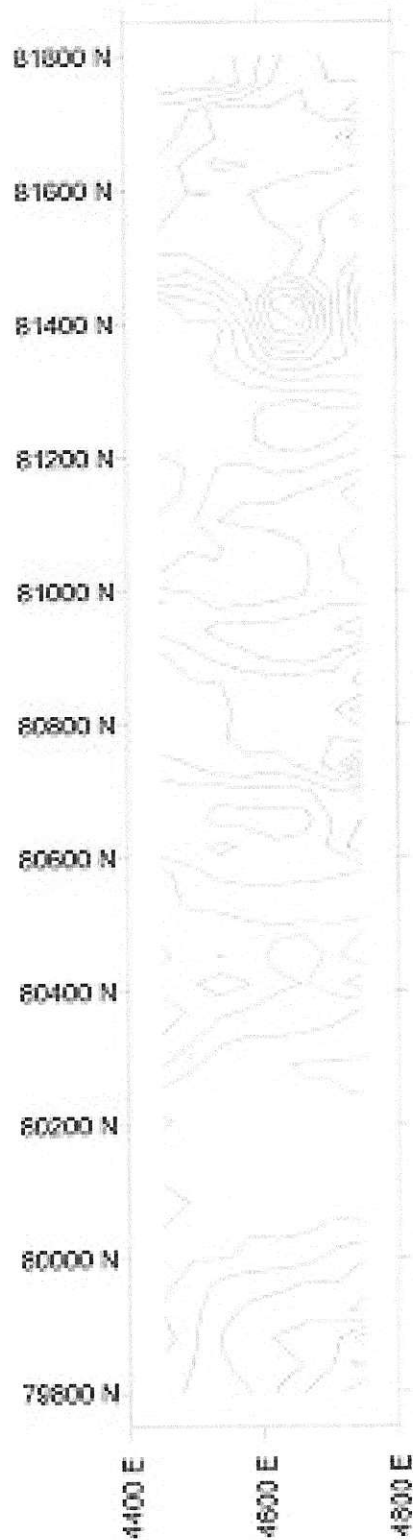
AOM MINERALS LTD.
Maybe Property

Magnetometer Survey
(Raw Data)

LEGEND
x - Survey Station
5647 - Gamma Value
(true value 55647)

0 m 100 m 200 m

Figure 4



AOM MINERALS LTD.
 Maybe Property
 Magnetometer Survey
 (contoured)



Figure 5

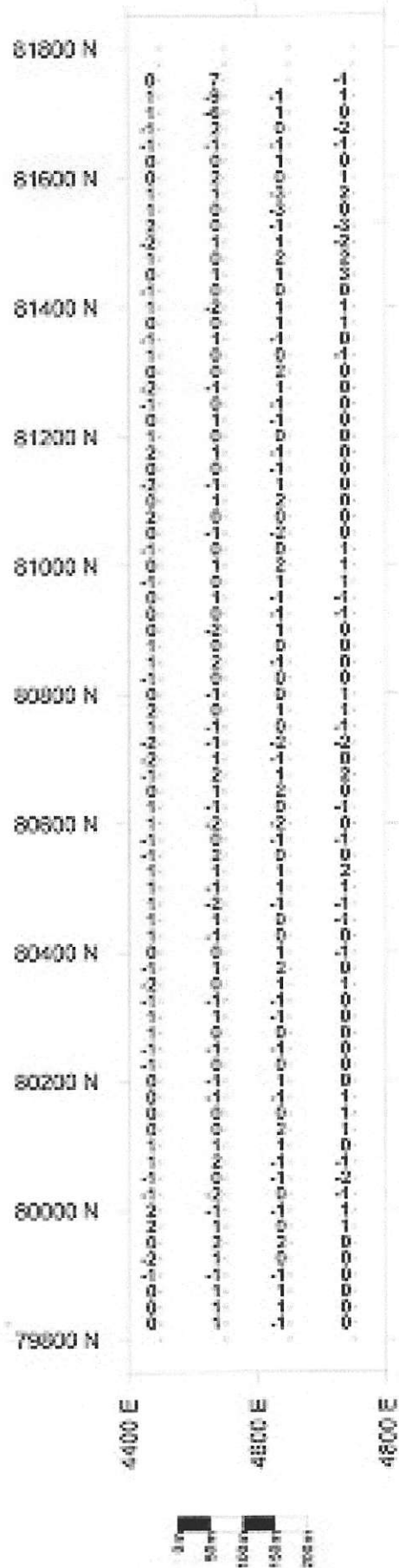
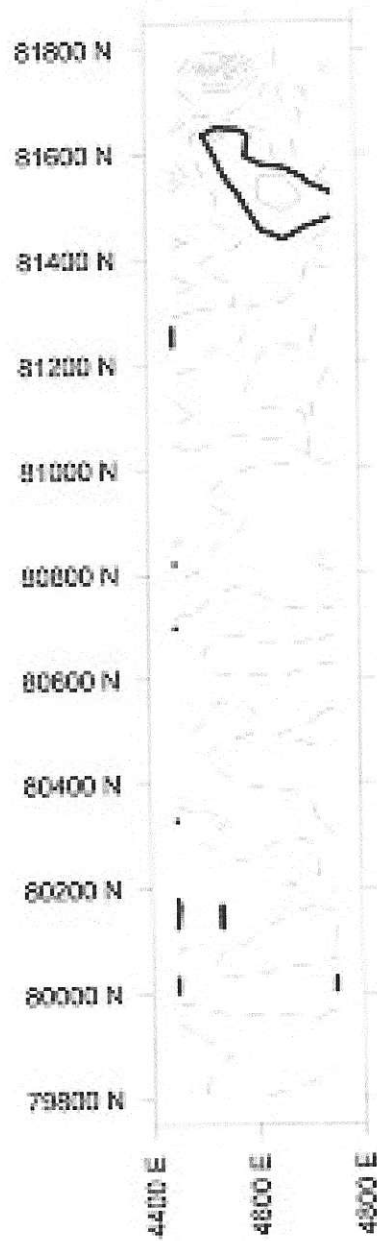


Figure 6



AOM MINERALS LTD.
 Maybe Property

VLF-EM Survey
 (Iraser filtered data
 contoured)

LEGEND

- Crossover
- - - Negative Values
- Positive Values (anomalous)



Figure 7