

SOOKOCHOFF CONSULTANTS INC.

**Suite 120 125A-1030 Denman Street
Vancouver, BC Canada V6G 2M6
E-mail: lsookochoff@hotmail.com**

July 17, 2006

Board of Directors
Cantop Ventures Ltd.
Vancouver, BC Canada

Dear Sirs:

Re: Copper Road Property
Nanaimo Mining Division
Vancouver Island, Canada

Phase I of the Recommended Exploration Program as set out in the writer's report on the above noted property and dated June 13, 200, has been completed.

For a complete report on the property, the reader is referred to the writer's report entitled "Geological Evaluation Report on the Copper Road Property for Cantop Ventures Inc dated June 13, 2005.

The proposed Phase I exploration program was for the compilation of previous exploration data; analysis of the data, compilation map and the investigation of the anomalous areas along the shear zone that are indicated to contain mineralization. Historical data, such as maps and assays from the exploration results were searched for but were not located. Thus, in lieu of the historical data, the property was directly explored in the showings area by trenching and sampling; this adjusted exploration program took the place of "...the investigation the anomalous areas along the shear zone that are indicated to contain mineralization."

The Phase I exploration program of trenching and sampling was completed by New Zone Resources Ltd. with results shown on the accompanying "SAMPLE LOCATION MAP".

The samples taken, description of the samples taken, and the copper assays of the samples taken are listed in Table 1 below. The locations of the samples taken are shown on the accompanying map. For a complete Muti-Element ICP Analysis of the samples taken, the reader is referred to the attached assay sheet.

Table 1

Sample No.	Description	Assay: %Cu
CANTOP 1	Quartz diorite: with chalcopyrite & malachite	2.62
CANTOP 2	Quartz diorite: with chalcopyrite & malachite	4.68
CANTOP 3	Andesite: fine grained with bornite & malachite	1.40
CANTOP 4	Limestone: iron stained	0.03
CANTOP 5	Diorite: fine grained with quartz stringers & chalcopyrite	1.92

It is concluded that the Phase I exploration program of trenching and sampling on the Copper Road Property was successful in that the results provided a confirmation of the significant copper mineralization that was historically reported. The mineralized quartz veins and the copper mineralization hosted by the shear zone indicates a potential for high-grade zones of copper mineralization within the mineral controlling shear zone, which may be mined by underground methods.

Phase II of the Recommended Exploration Program as outlined in the writer's report on the property dated June 13, 2005 is recommended to be initiated. The sample results from the Phase I exploration program would provide direction to the general area that should be covered by the Phase II exploration program of general magnetometer surveys and soil surveys. The results of these surveys should provide sufficient information to select prime locations for the detailed surveys of the Phase III exploration program.

Respectfully submitted,

Sookochoff Consultants Inc.
Laurence Sookochoff, PEng.

CERTIFICATE

I, Laurence Sookochoff, of the City of Vancouver, in the Province of British Columbia, do hereby certify:

That I am a Consulting Geologist and principal of Sookochoff Consultants Inc. with an address at 120 125A-1030 Denman Street, Vancouver, BC V6G 2M6.

I, Laurence Sookochoff, further certify that:

- 1) I am a graduate of the University of British Columbia (1966) and hold a B.Sc. degree in Geology.
- 2) I have been practicing my profession for the past forty years.
- 3) I am registered and in good standing with the Association of Professional Engineers and Geoscientists of British Columbia.
- 4) The information for this report is based on information received from Larry Sostad of New Zone Resources Ltd.
- 5) I do not have any direct or indirect interest in the Copper Road Property as described herein nor in the securities of Cantop Ventures Ltd.

Laurence Sookochoff, P. Eng.

Vancouver, BC
July 17, 2006

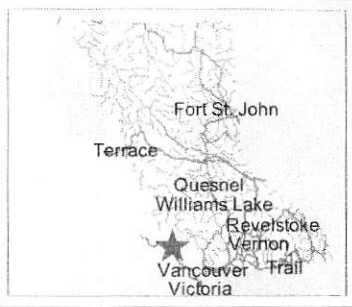
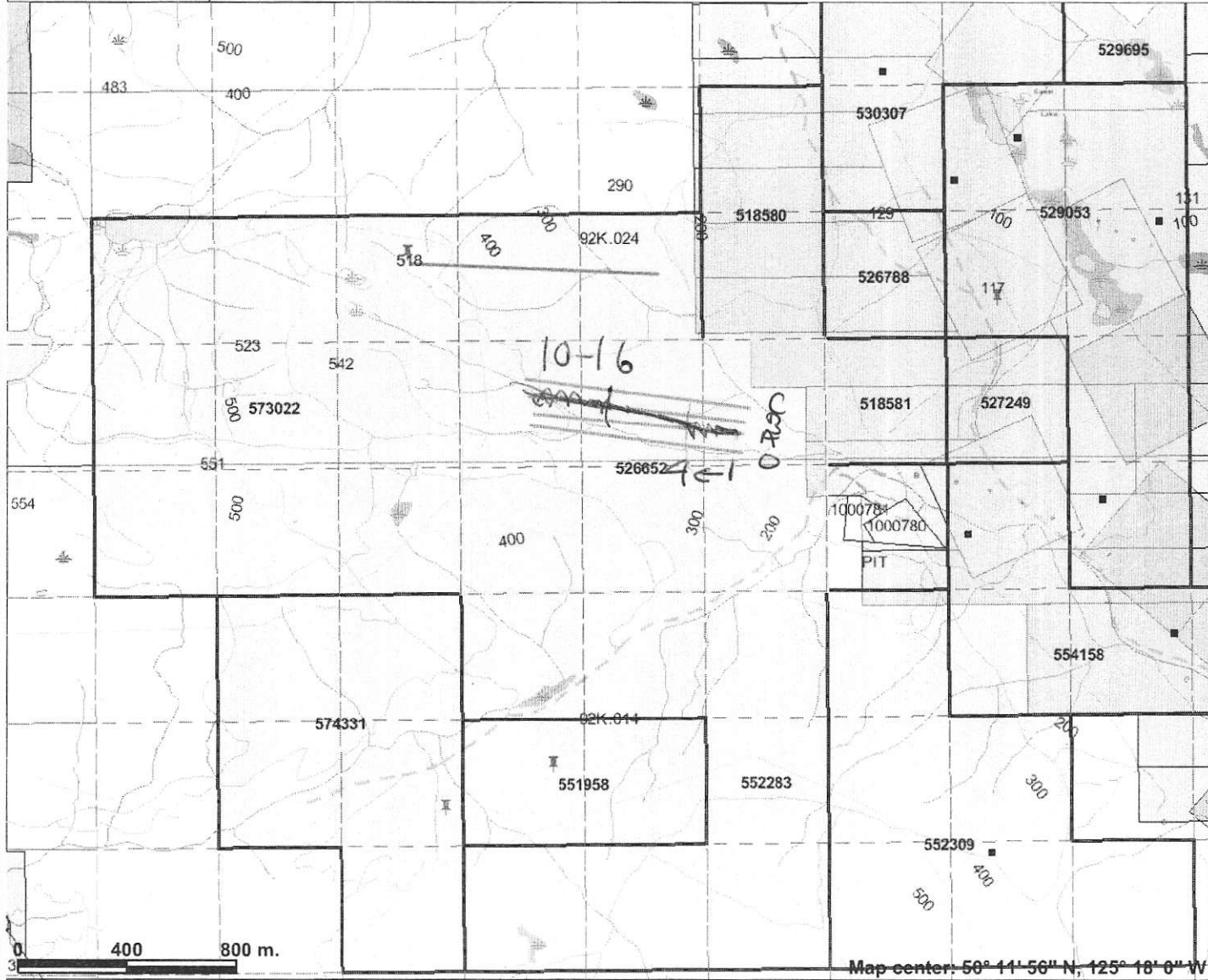
COPPER RD. PROSPECT.

LINE O			LINE A		
	1 W	2680	1		2690
	2	2685	2		2695
	3	2680	3		2690
	4	2675	4		2690
	5	2670	5		2685
	6	2670	6		2680
	7	2670	7		2670
	8	2675	8		2670
	9	2670	9		2665
	10	2670	10		2670
	11	2675	11		2675
	12	2675	12		2675
	13	2680	13		2680
	14	2680	14		2680
	15	2680	15		2675
	16	2675	16		2675

B	1W	2685
	2	2685
	3	2690
	4	2685
	5	2680
	6	2680
	7	2675
	8	2670
	9	2670
	10	2675
	11	2685
	12	2690
	13	2695
	14	2690
	15	2690
	16	2695

C	1W	2670
	2	2675
	3	2670
	4	2675
	5	2675
	6	2675
	7	2670
	8	2670
	9	2675
	10	2670
	11	2675
	12	2690
	13	2690
	14	2685
	15	2690
	16	2690

COPPER ROAD PROSPECT



Legend

- MINFILE Status**
- I Producer
 - X Past Producer
 - Y Developed Prospect
 - All others
- Indian Reserves**
- National Parks**
- Parks**
- Mineral Titles Grid (LRDW)**
- Mineral Tenures (Mineral - LRDW)**
- Mineral Claim
 - Mineral Lease
- Reserves (Mineral - LRDW Sites)**
- Placer Claim Designation
 - Placer Lease Designation
 - No Staking Reserve
 - Conditional Reserve
 - Release Required Reserve
 - Surface Restriction
 - Recreation Area
 - Others
- Mining Division (MTO)**
- Integrated Cadastral Fabric
 - Survey Parcels
 - BCGS Grid
- Contours (1:250K)**
- ~ Contour - Index
 - ~ Contour - Intermediate
 - ~ Area of Exclusion
 - ~ Area of Indefinite Contours
- Annotation (1:20K)**
- ~ Transportation - Points (TRIM)



Scale: 1:22,123

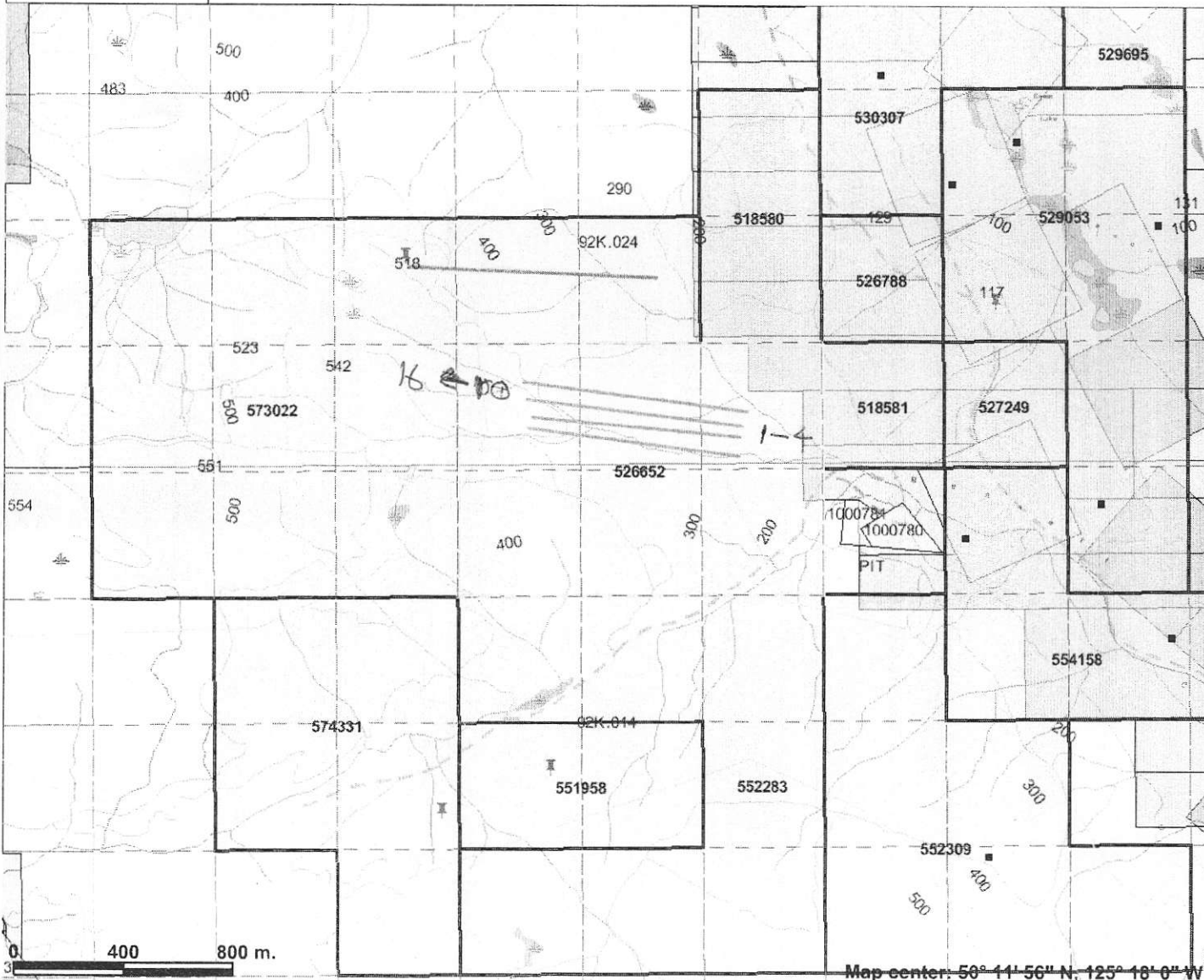
0 400 800 m.

Map center: 50° 11' 56" N, 125° 18' 0" W

This map is a user generated static output from an Internet mapping site and is for general reference only. Data layers that appear on this map may or may not be accurate, current, or otherwise reliable. THIS MAP IS NOT TO BE USED FOR NAVIGATION.

Notes: MAGNETMETER & GEO CHEM SURVEY

COPPER ROAD PROSPECT



Legend

- MINFILE Status**
- ⌘ Producer
 - ⌘ Past Producer
 - ⌘ Developed Prospect
 - All others
- Indian Reserves**
- National Parks**
- Parks**
- Mineral Titles Grid (LRDW)**
- Mineral Tenures (Mineral - LRDW)**
- Mineral Claim
 - Mineral Lease
- Reserves (Mineral - LRDW Sites)**
- Placer Claim Designation
 - Placer Lease Designation
 - No Staking Reserve
 - Conditional Reserve
 - Release Required Reserve
 - Surface Restriction
 - Recreation Area
 - Others
- Mining Division (MTO)**
- Integrated Cadastral Fabric
 - Survey Parcels
 - BCGS Grid
- Contours (1:250K)**
- ~ Contour - Index
 - ~ Contour - Intermediate
 - ~ Area of Exclusion
 - ~ Area of Indefinite Contours
- Annotation (1:20K)**
- Transportation - Points (TRIM)**
- Scale: 1:22,123

Map center: 50° 11' 56" N, 125° 18' 0" W

This map is a user generated static output from an Internet mapping site and is for general reference only. Data layers that appear on this map may or may not be accurate, current, or otherwise reliable. THIS MAP IS NOT TO BE USED FOR NAVIGATION.

Notes: MAGNETMETER & GEO CHEM SURVEY