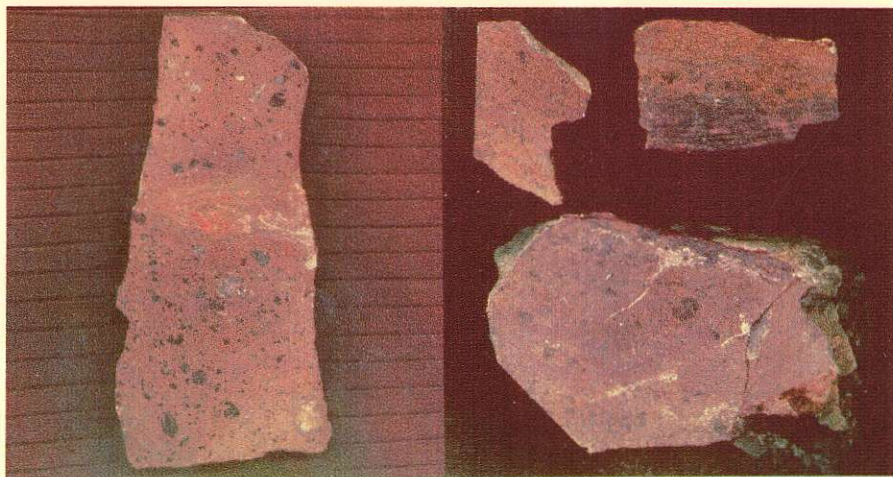
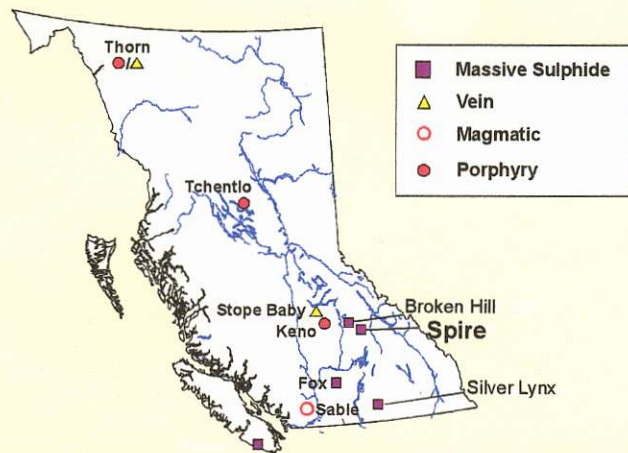


**SPIRE SHOWING
IMPERIAL METALS CORPORATION**



**GOLDSTREAM SPIRE
IMPERIAL METALS CORPORATION**



SPIRE DISCOVERY

- ✘ **Location:** 7.5 km southwest of Goldstream mine, north of Revelstoke, B.C.
- ✘ **Discoverer/Operator:** Imperial Metals Corporation.
- ✘ **Geology and Mineralization:**
 - Massive to semi-massive sulphides (chalcopyrite-pyrite-sphalerite) [VMS] across a true thickness of 3 metres. The mineralogy, texture and lithologies are similar to those at the Goldstream mine.
 - Channel samples included 1 m grading 0.94% Cu and 1.93% Zn.
 - Grab samples graded up to 8.03% Cu, 7.89% Zn, and 51 g/t Ag.
- ✘ **Work Done (Oct. - Nov., 2000):**
 - 7 diamond drill holes totalling ~ 720 m. Four holes collared ~ 40 m south of the showing and intersected the sulphide horizon. Hole 1 intersected 3.12 m grading 0.51% Cu and 1.08% Zn.
- ✘ **2001 Work:**
 - Follow-up program in spring.
- ✘ **Regional Significance:**
 - Revives exploration potential in vicinity of Goldstream mine. Orphan Boy Resources Plan to drill the eastern portion of the Goldstream property under a joint venture agreement with Imperial Metals Corp.