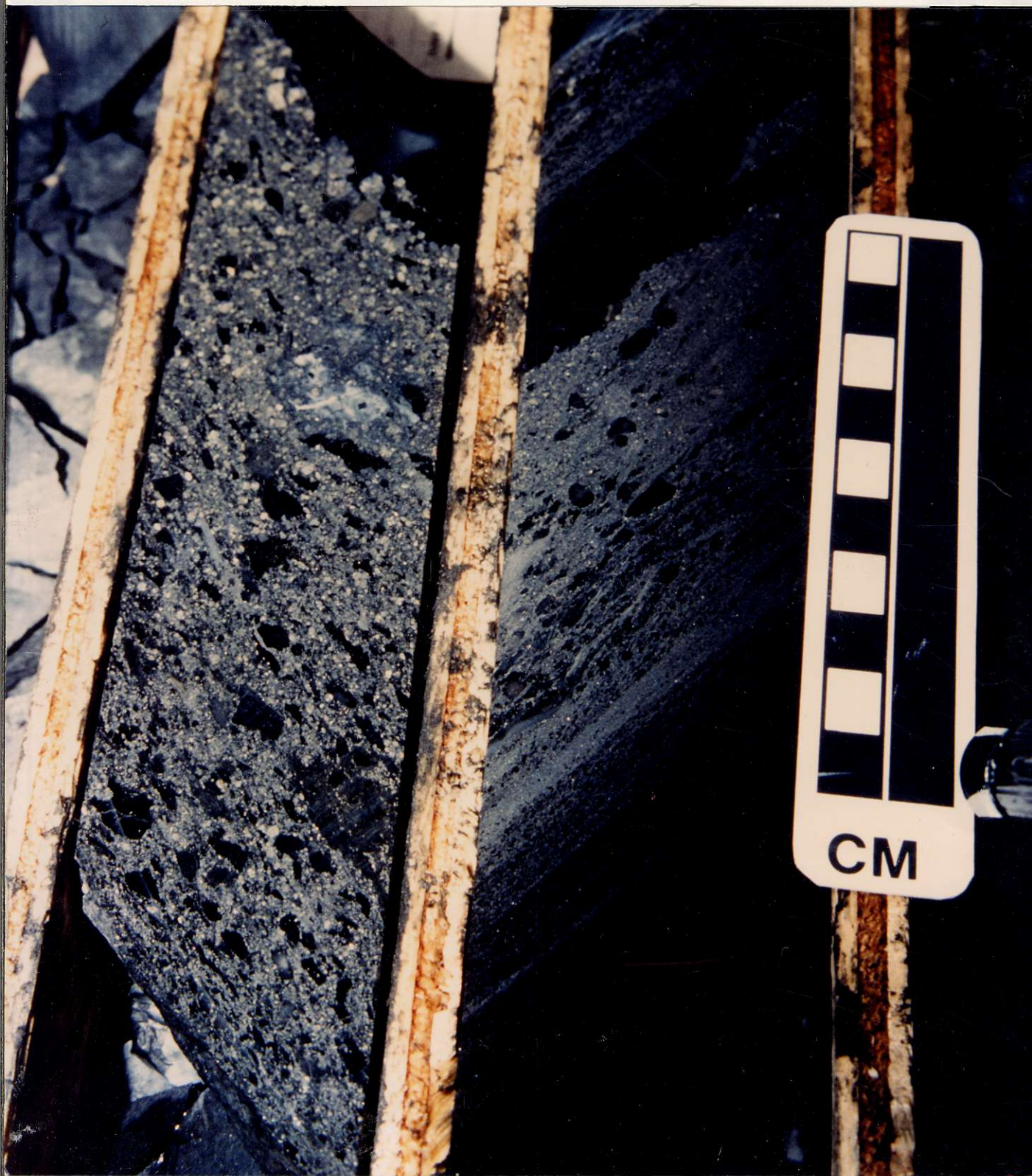




**Andesitic pillow breccia with calcareous matrix,
Hangingwall Andesite Unit, Eskay Creek (#21 Zone)**

889939
ESKAY CREEK

**Mudstone fragments in massive sulphide layer, Contact Unit,
21B Deposit, Eskay Creek, DDH CA89-97: 98m.**



DATUM MEMBER, FOOTWALL DACITE UNIT

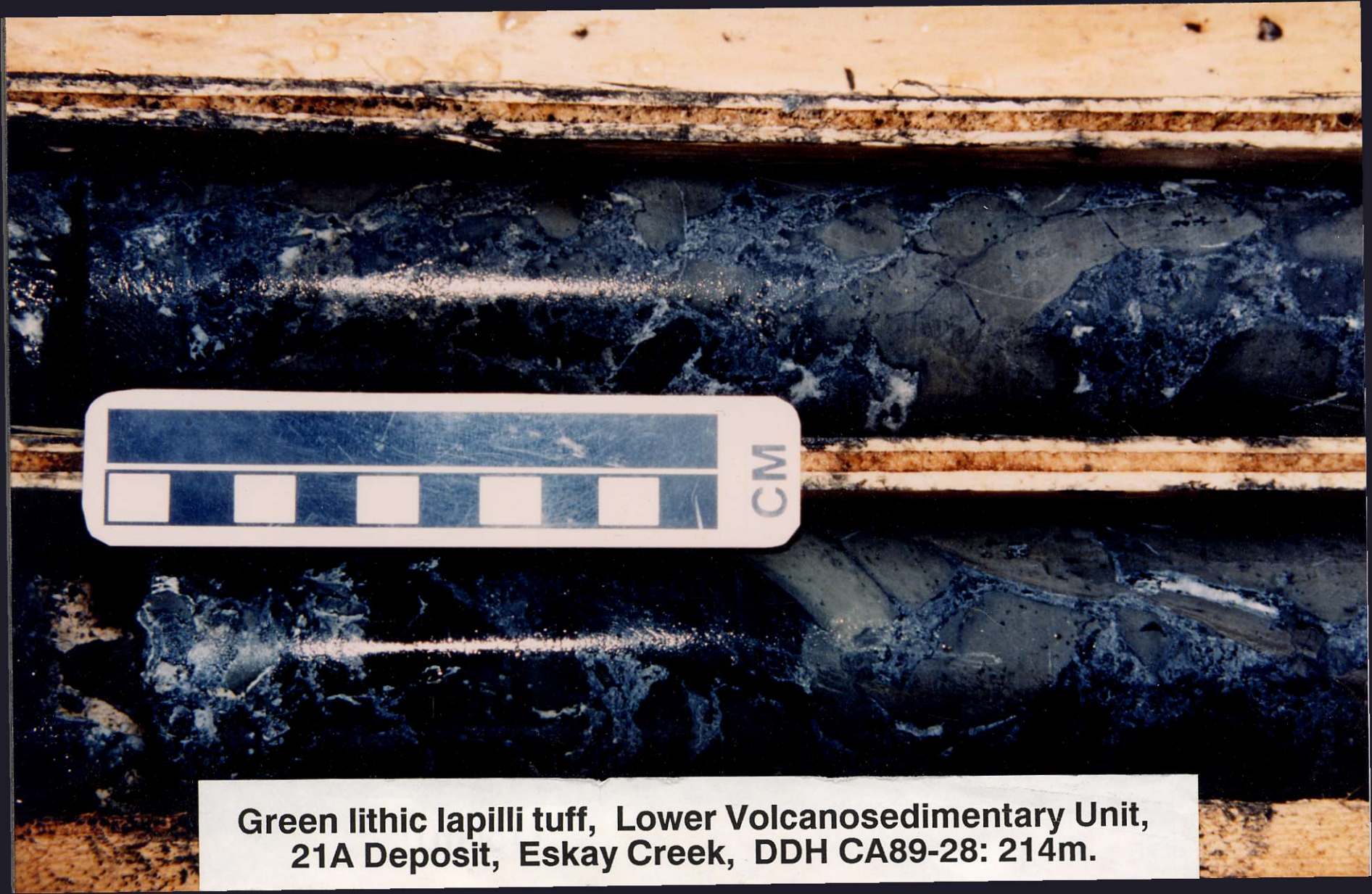


Fracture-controlled sericite-pyrite alteration in Datum Member, Dacite Unit, 21A Deposit, Eskay Creek, DDH CA89-45: 212m.

21A DEPOSIT



Siltstone breccia with realgar matrix, Contact Unit,
21A Deposit, Eskay Creek, DDH CA89-89: 85m.



**Green lithic lapilli tuff, Lower Volcanosedimentary Unit,
21A Deposit, Eskay Creek, DDH CA89-28: 214m.**

Local Geology of the Eskay Creek Deposit

LEGEND

-  Bowser Lake Group sediments
-  Basalt
-  Rhyolite
-  Felsic subvolcanic dykes
-  Intermediate to felsic volcaniclastic rocks
-  Argillite and sandstone
-  Andesite
-  Argillite, sandstone, conglomerate, limestone
-  Eskay Porphyry



Coulter Creek Thrust Fault

21 Zone

Emma Adit

Mckay Adit

ESKAY ANTICLINE

Unuk River

SCALE

600 300 0 300 600

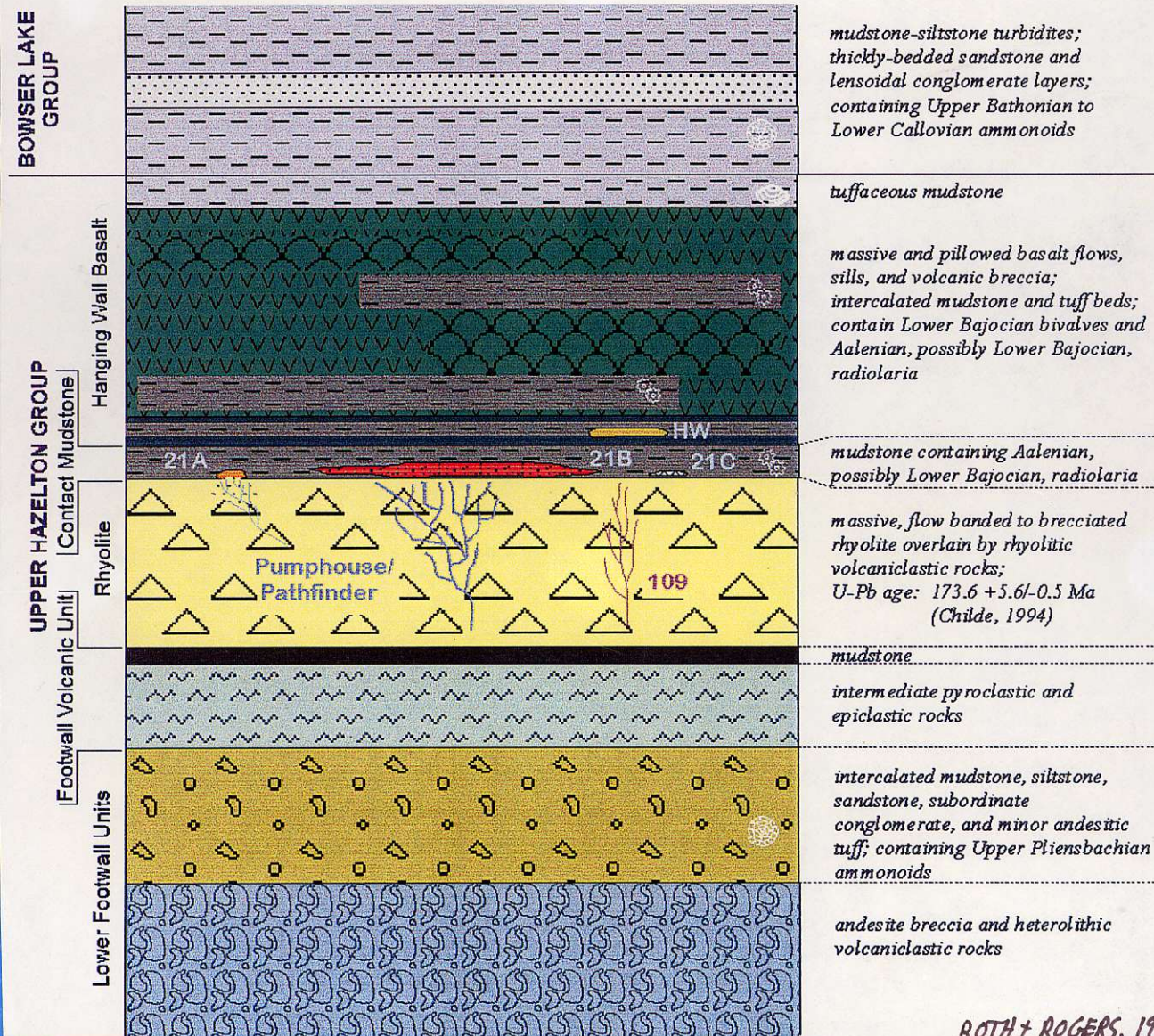


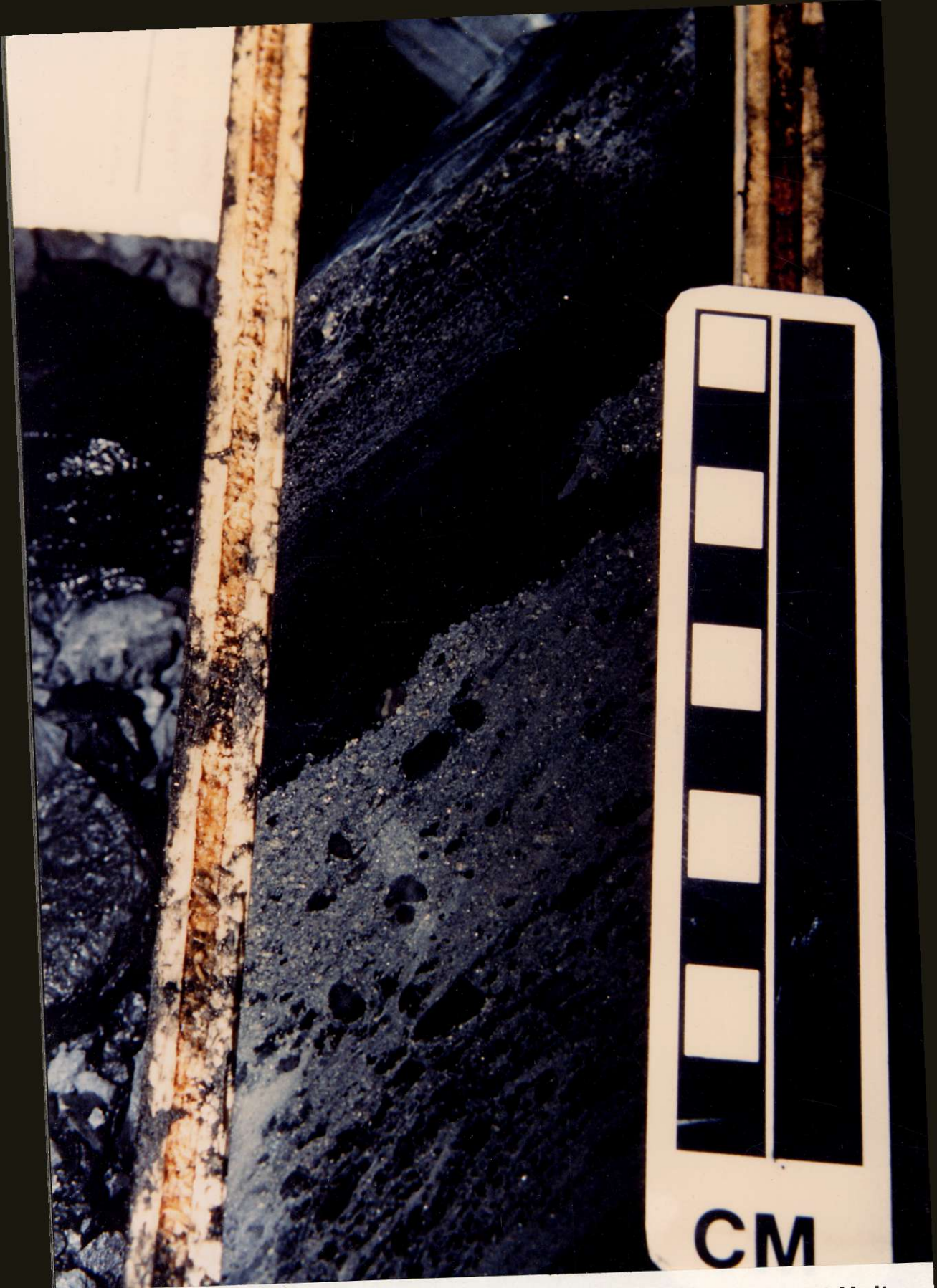
metres

Compiled from mapping by: F.C. Edmunds & D.L. Kuran (1991), R.D. Bartsch (1993), T. Roth (1993), P.D. Lewis (1993), and H. Marsden & A. Kaip (1993)

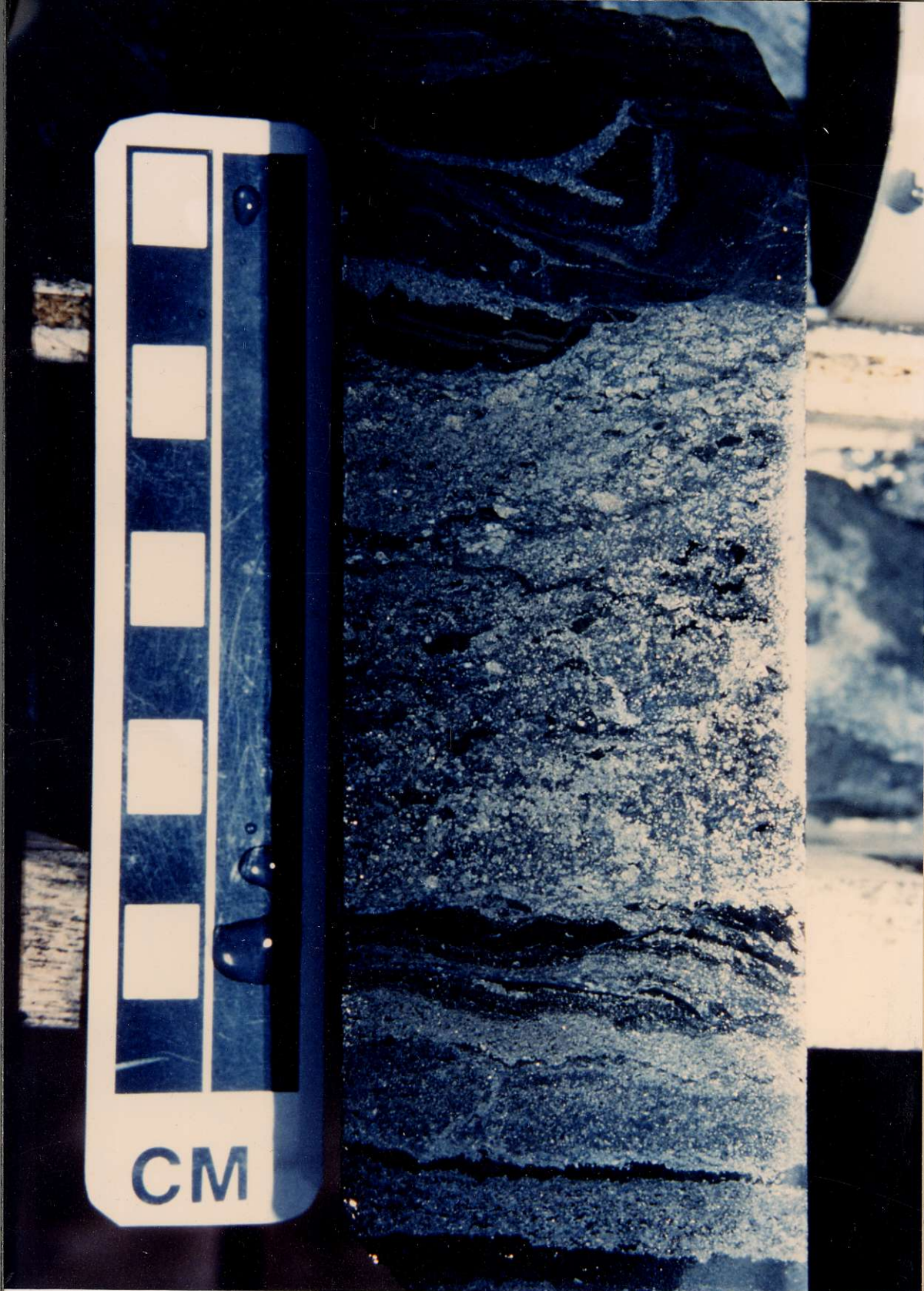
R6TH + ROGERS,
1997

Schematic Stratigraphic Section of the Eskay Creek Area





Mudstone fragments in massive sulphide layer, Contact Unit,
21B Deposit, Eskay Creek, DDH CA89-97: 98m.



Banded massive sulphides (sphalerite, tetrahedrite, boulangerite, bournonite) in pyritic mudstone, Contact Unit, 21B Deposit, Eskay Creek, DDH CA89-87: 103m.