

Local Geology of the Eskay Creek Deposit

LEGEND

- Bowser Lake Group sediments
- Basalt
- Rhyolite
- Felsic subvolcanic dykes
- Intermediate to felsic volcaniclastic rocks
- Argillite and sandstone
- Andesite
- Argillite, sandstone, conglomerate, limestone
- Eskay Porphyry



Coulter Creek Thrust Fault

21 Zone

Emma Adit

Mckay Adit

ESKAY ANTICLINE

Unuk River

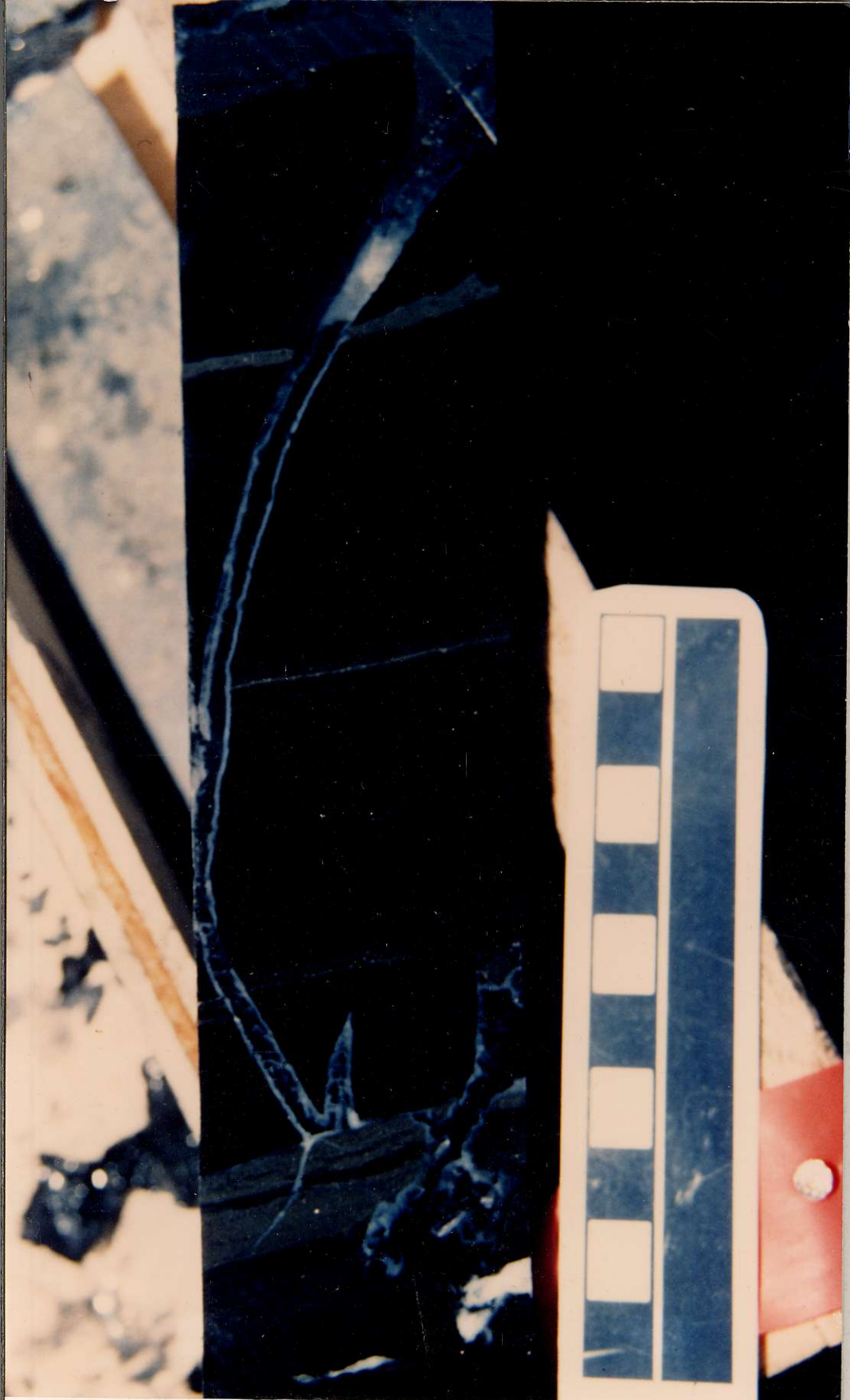
SCALE

600 300 0 300 600



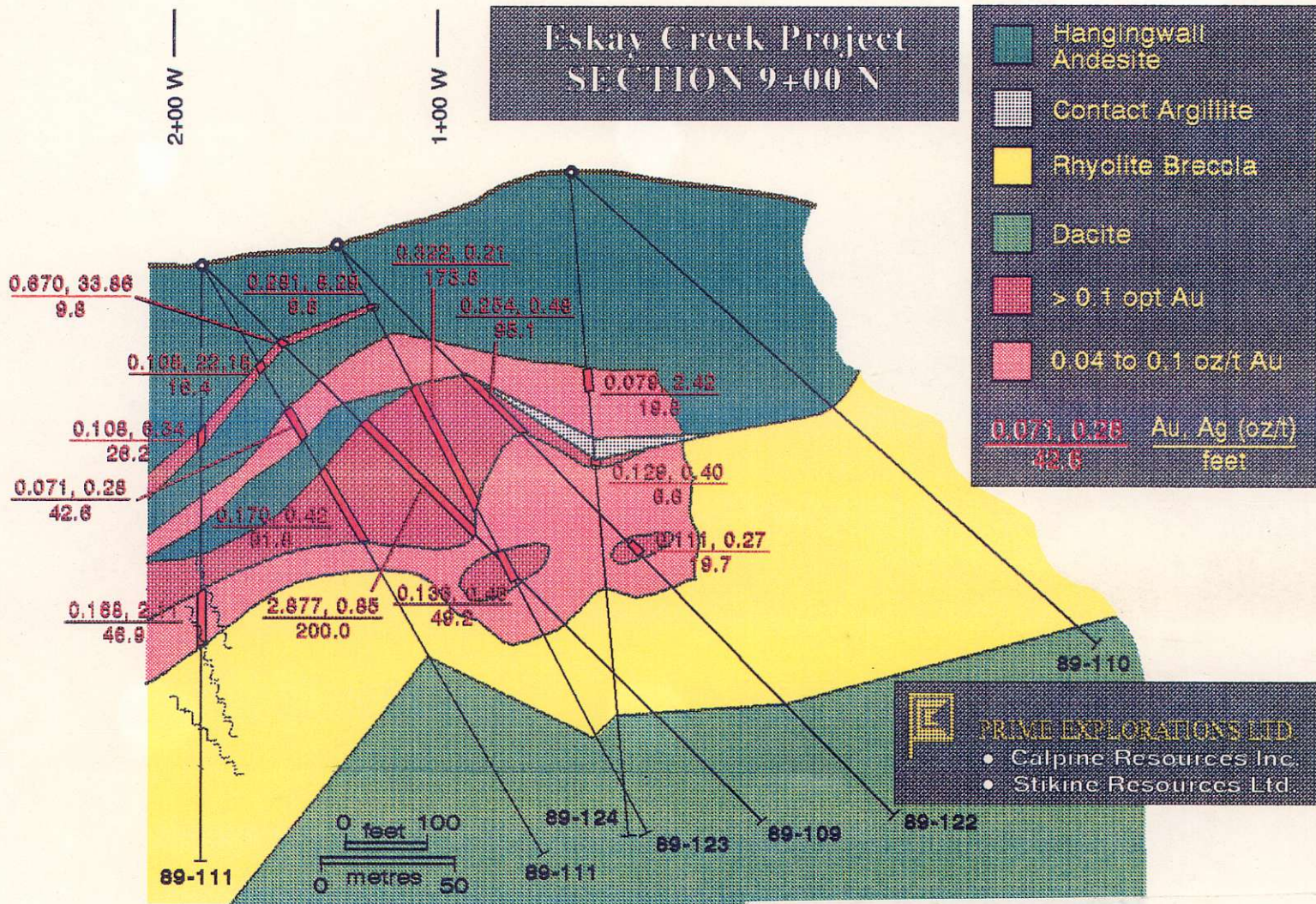
metres

889937



Quartz-pyrite-sphalerite-galena-pyrobitumen(?) vein cutting pyritic siltstone of the Contact Unit, 21B Deposit, Eskay Creek, DDH CA89-109: 89-90m.

Eskay Creek Project SECTION 9+00 N



21B DEPOSIT

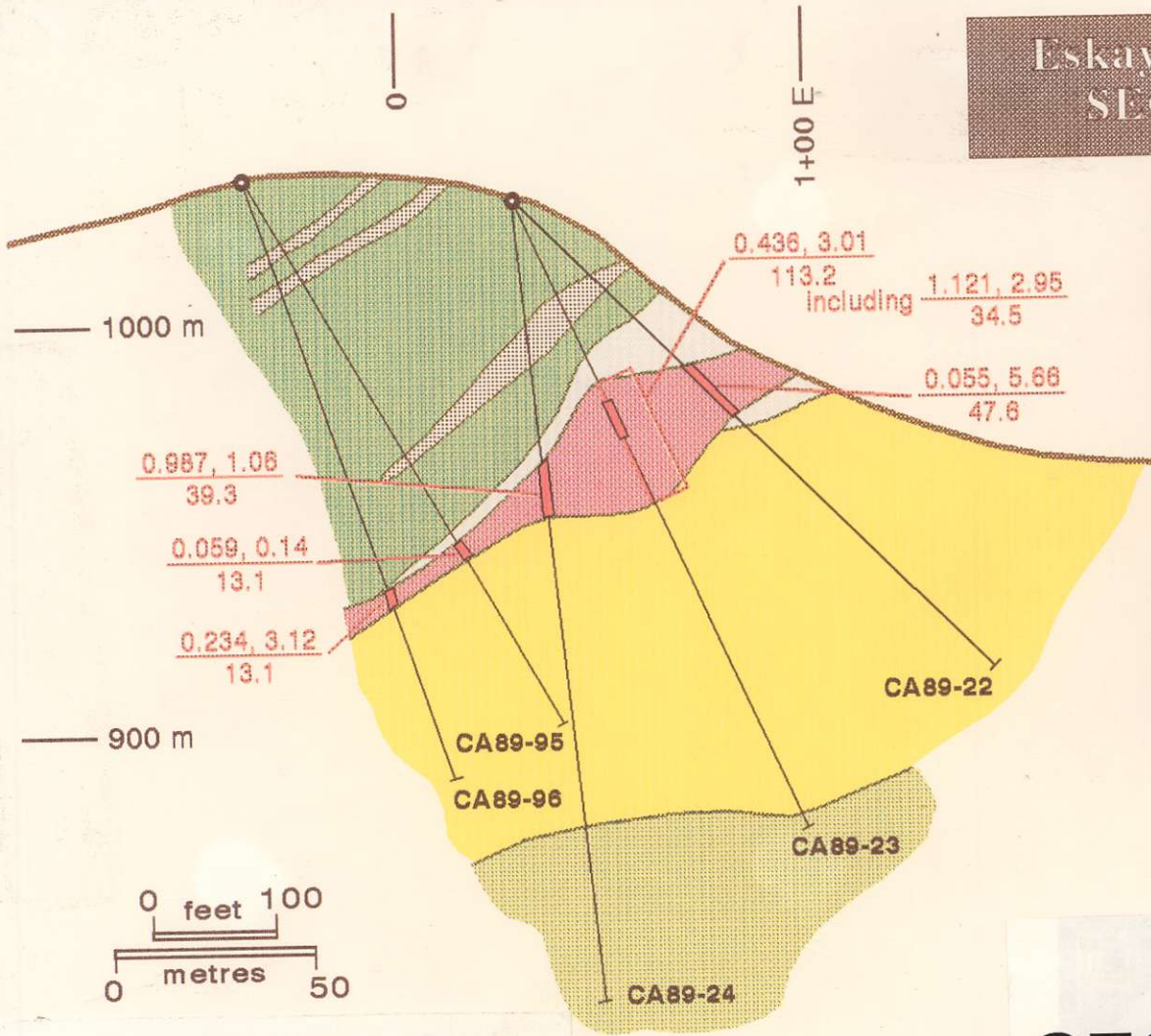
SECTION 9+00 N



PRIME EXPLORATIONS LTD

- Calpine Resources Inc.
- Stikine Resources Ltd

Eskay Creek Project SECTION 0+00

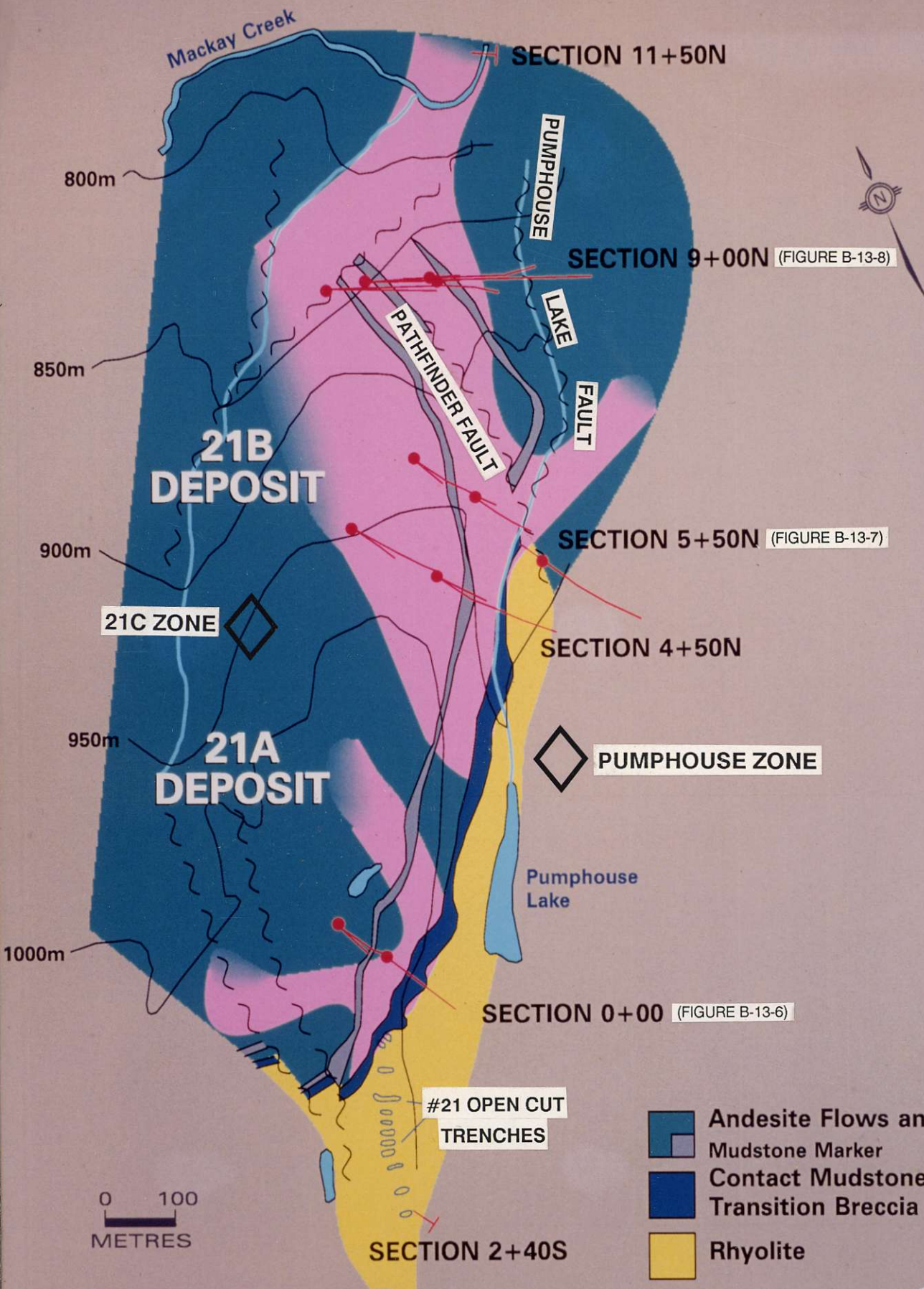


| | |
|--|----------------------------|
| | Hangingwall Andesite |
| | Argillite (minor Andesite) |
| | Contact Argillite |
| | Rhyolite Breccia |
| | Dacite |
| | > 0.1 oz/t Au |

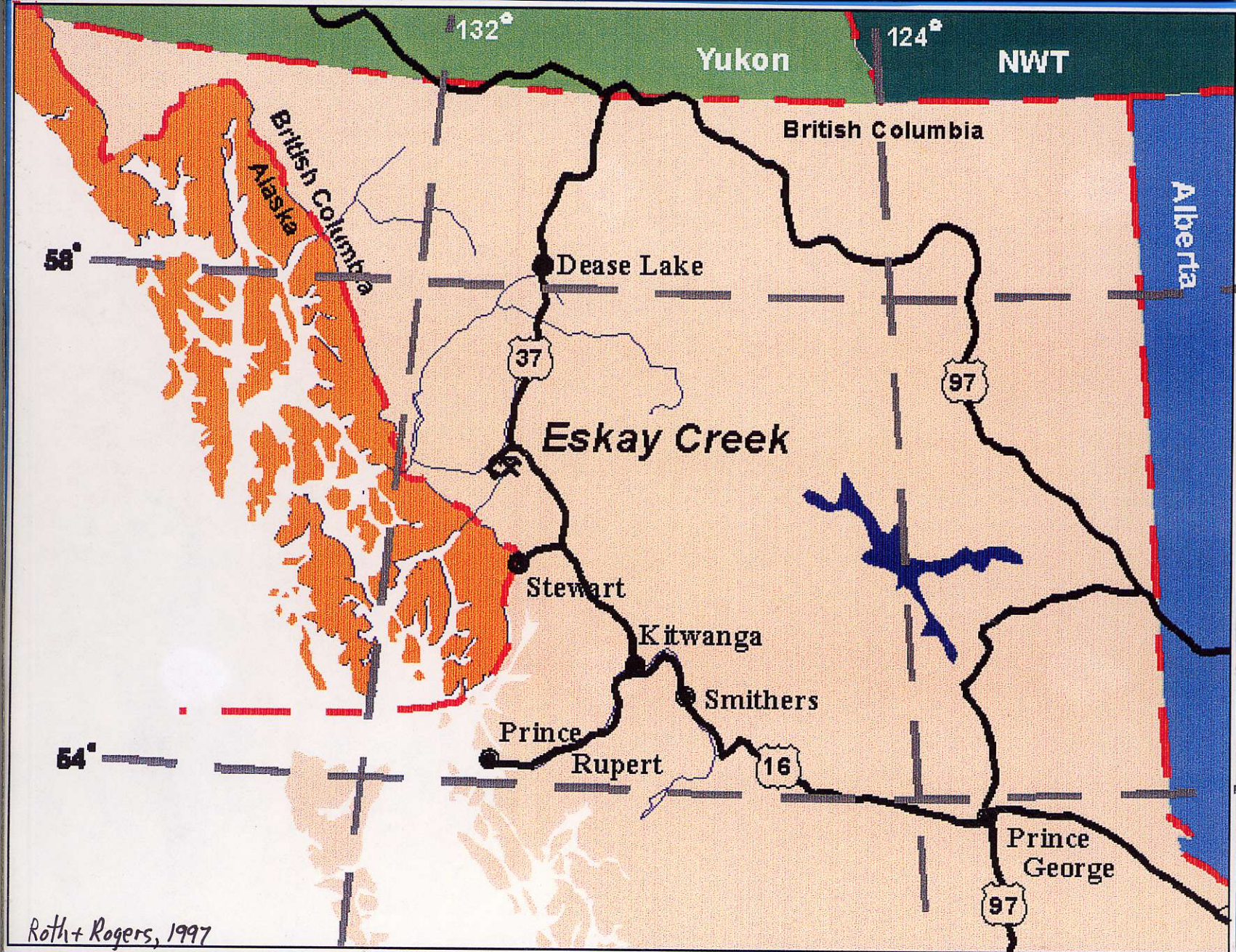
| 0.987, 1.06 | Au, Ag (oz/t) |
|-------------|---------------|
| 39.3 | feet |

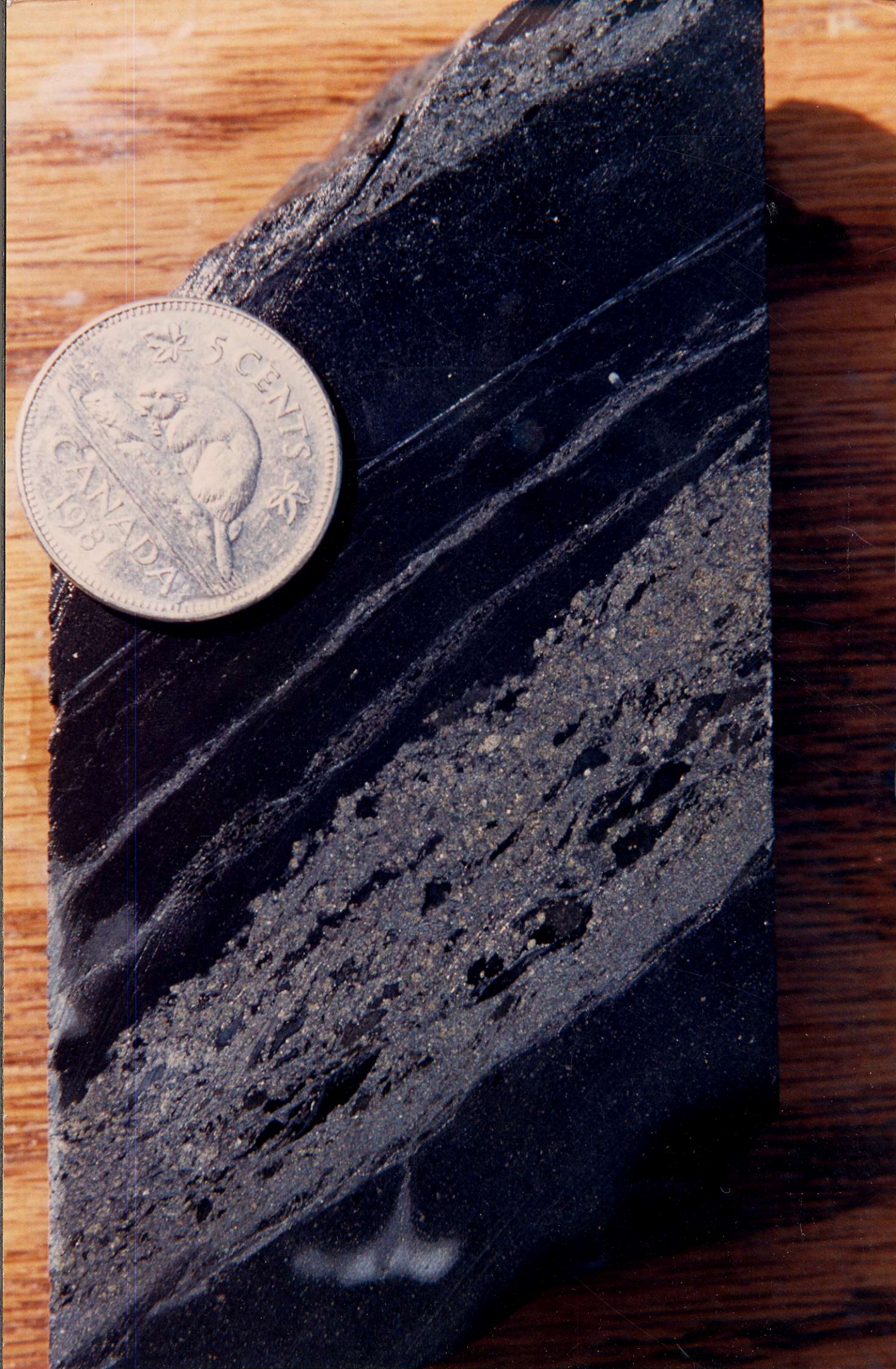
21A DEPOSIT

SECTION 0+00



- Andesite Flows and Breccia
- Mudstone Marker
- Contact Mudstone and Transition Breccia
- Rhyolite





Massive sulphides (sphalerite, tetrahedrite, boulangerite, bournonite) in mudstone, Contact Unit, 21B Deposit, Eskay Creek, DDH CA89-86: 82.5m.

ESKAY CK. DISPLAY (GAC '90)
Britton, Schroeter, + Blackwell
% BCGS
Vancouver
(604) 660-2812

#221 Layered grey sulphosalts and amber sphalerite,
Transition Zone, 21 Zone (Central), Eskay Creek,
DDH CA89-86: 82.5m.

221

from
T. Schroeter

1989

KETCHUM CREEK

#21 ZONE

ARGILLITE CREEK

PUMPHOUSE LAKE

WACKAY CREEK

#4 BLUFF

#5 ZONE

PORPHYRY ZONE

#3 BLUFF

ESKAY CREEK

BASECAMP

LOOKING NORTHWEST OVER ESKAY CREEK

(September, 1989)

