

ARGILLITE CREEK

RED BLUFF

CAMP

PORPHYRY ZONE

LOOKING NNW OVER ESKAY CREEK

889936



W.A. PROUT

T.S. MACKAY

A.H. MELVILLE



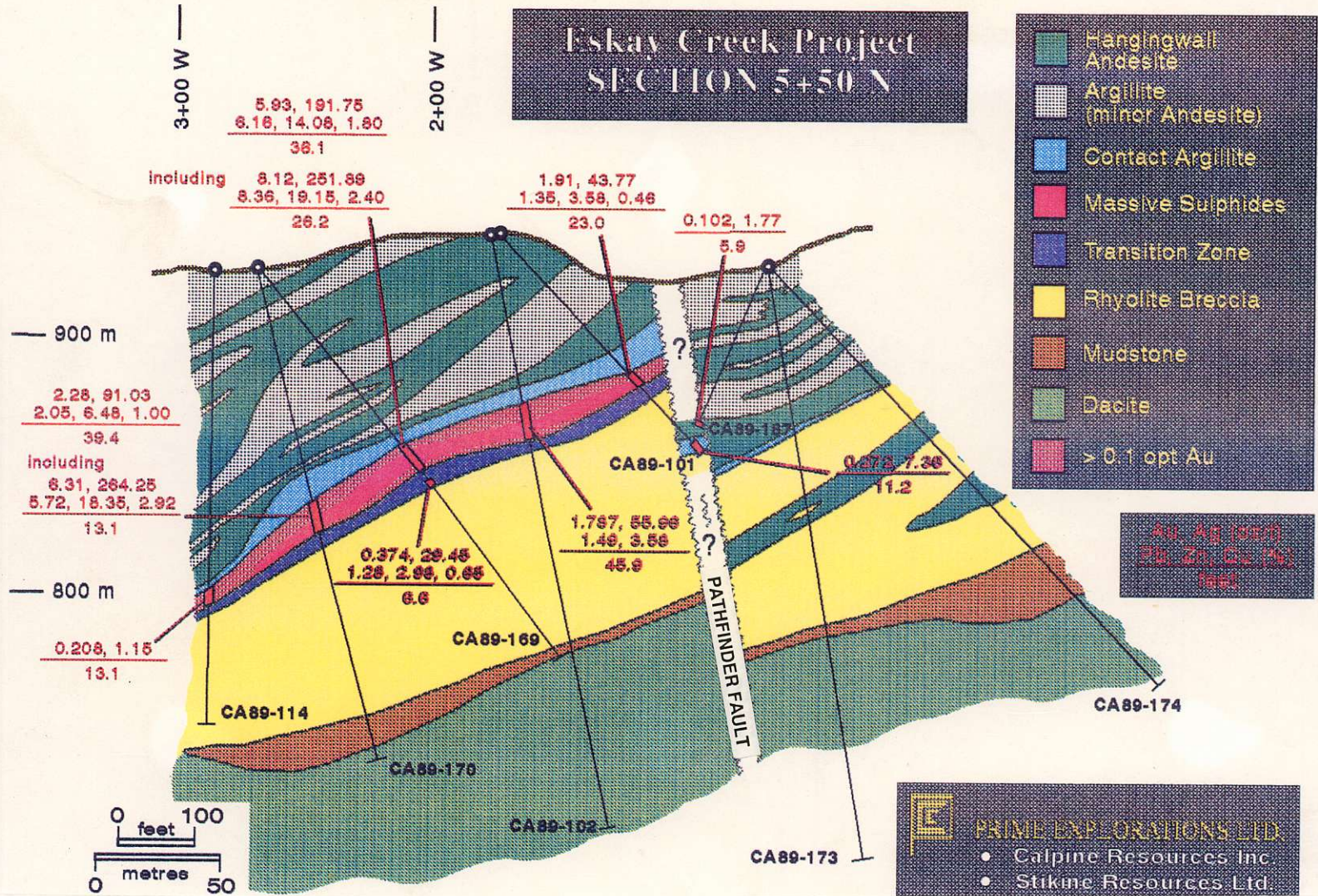
TOM MACKAY'S CABIN, EST.1936 (September, 1989)



ESKAY CREEK. This view is oriented south-southwest over the Eskay Creek mine facility and deposits. Commercial production began in January, 1995 with reserves for the 21B zone of 1.09M tonnes grading 65.14 g/t Au, 2949 g/t Ag, 5.6% Zn and 0.77% Cu. Annual production is expected to exceed 200,000 ounces of gold and 9M ounces of silver from this volcanogenic massive sulphide deposit. Exploration drilling at the minesite, during 1995, resulted in the discovery of high-grade mineralization at the NEX zone, an apparent northeast extension of the 21B orebody.

[2.1 Billion]
Apr '01

Eskay Creek Project SECTION 5+50 N

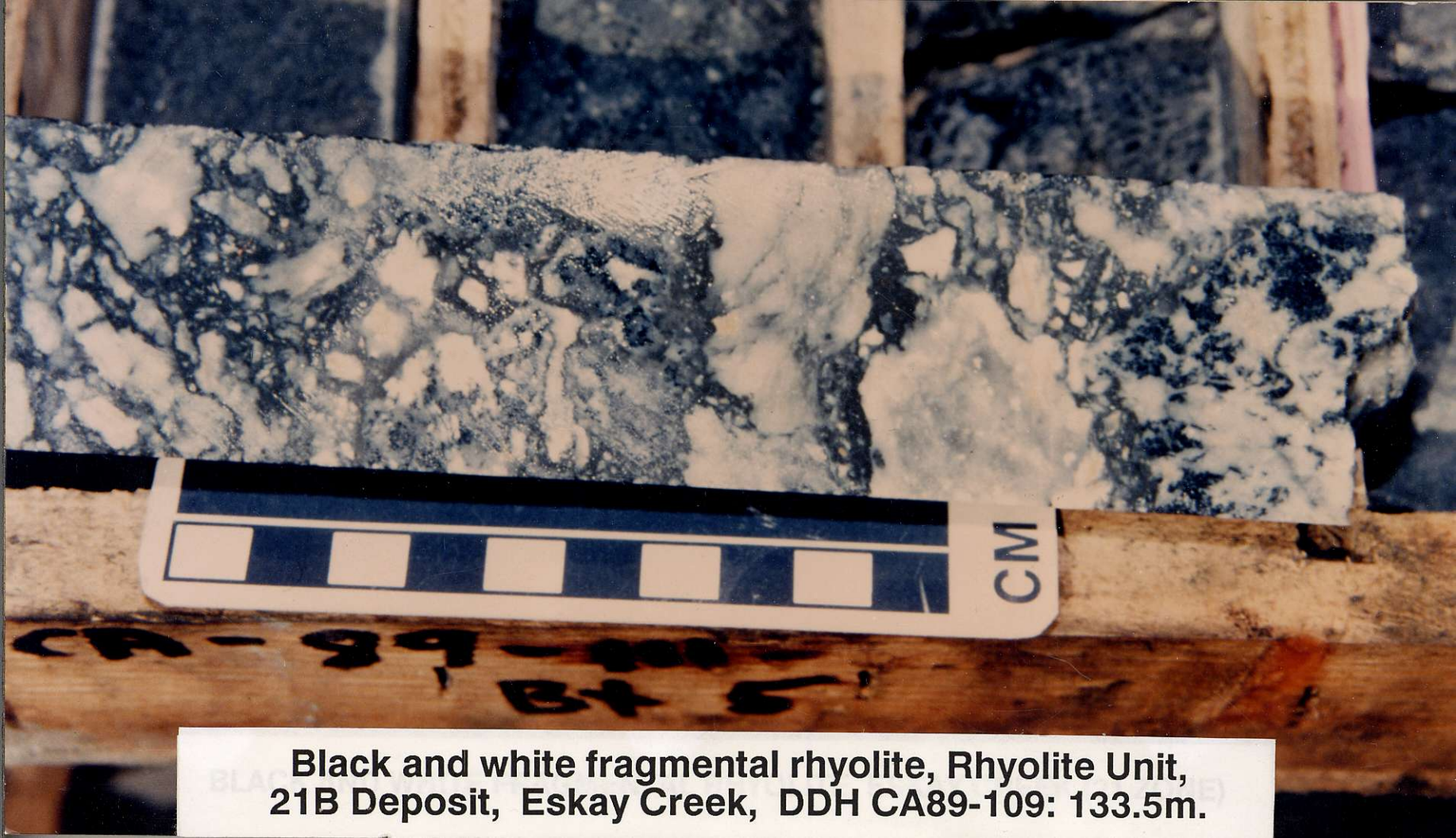


PRIME EXPLORATIONS LTD.

- Calpine Resources Inc.
- Stikine Resources Ltd.

21B DEPOSIT

SECTION 5+50 N



**Black and white fragmental rhyolite, Rhyolite Unit,
21B Deposit, Eskay Creek, DDH CA89-109: 133.5m.**

1939

Shear and quartz vein hosted Au-Ag
in altered felsic volcanics

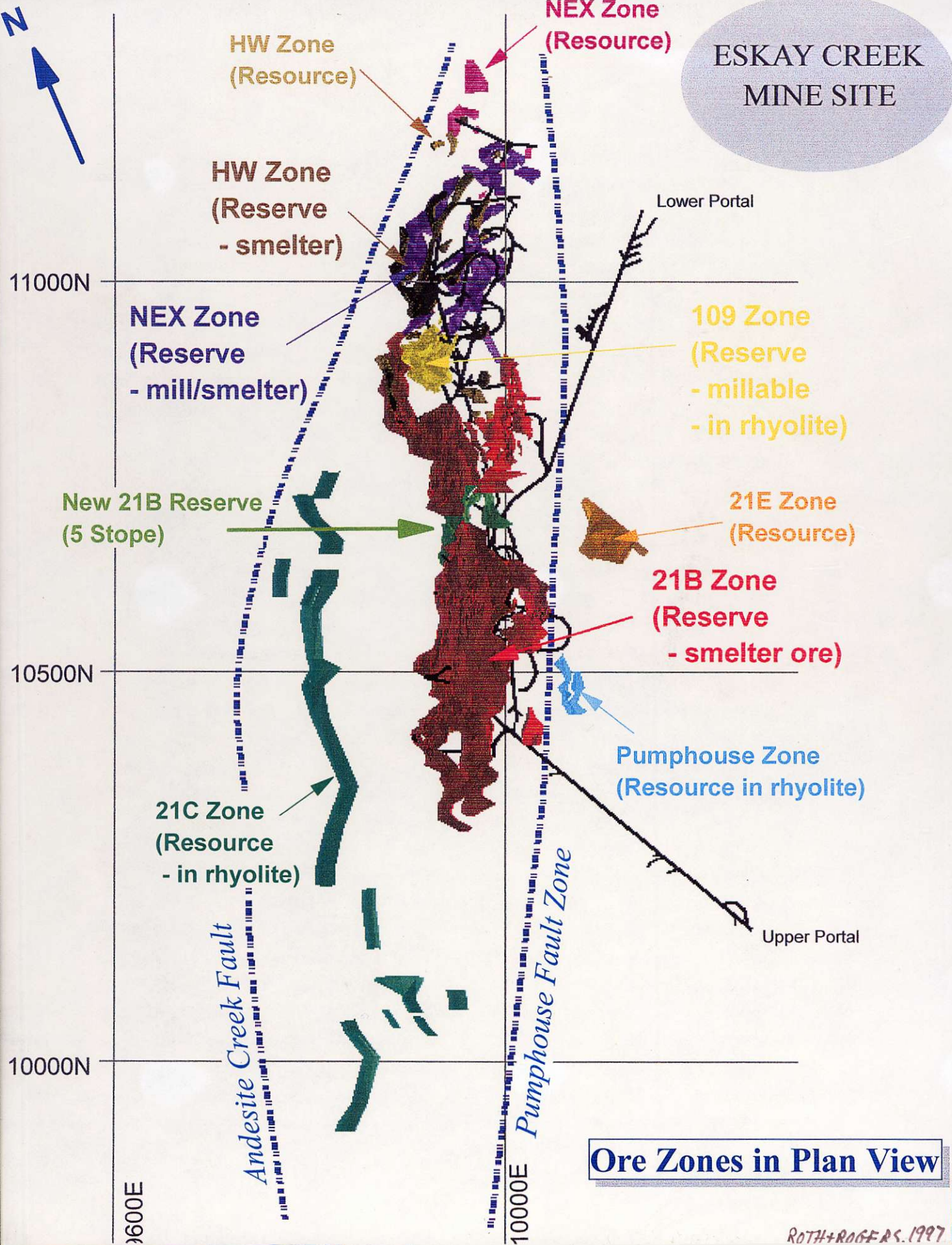
"Pre-Calpine Mess"

"Pre-Calpine Mess"

MACKAY ADIT, UPPER ESKAY CREEK



ESKAY CREEK MINE SITE



ESKAY CREEK

* **Type:** Massive sulphide (seafloor hydrothermal). * **Forecast 1997 production** = 13 217 kg. of Au equivalent (8% increase from 1996). * **\$17 million** on-site conventional 165 tpd mill facility construction. * **Estimated cash costs** are US \$172/oz. Au equivalent. * **Reserves:** 1.2 million tonnes grading 59.3 g/t Au and 2718.4 g/t Ag. * One of the highest grade Au-Ag mines in the world. * Significant on-site and regional exploration programs. * Annual production projected at 2177 kilograms of Au.



**Black and white lapilli tuff, Footwall Dacite Unit,
21A Deposit, Eskay Creek, DDH CA89-36: 278m.**

1988



CALPINE RESOURCES INC., ESKAY CREEK: THE EARLY DAZE

(September, 1988)

1963



EMMA ADIT, #6, 22 ZONES, ESKAY CREEK



ISKUT - SULPHURETS GOLD CAMP

NORTHWESTERN BRITISH COLUMBIA

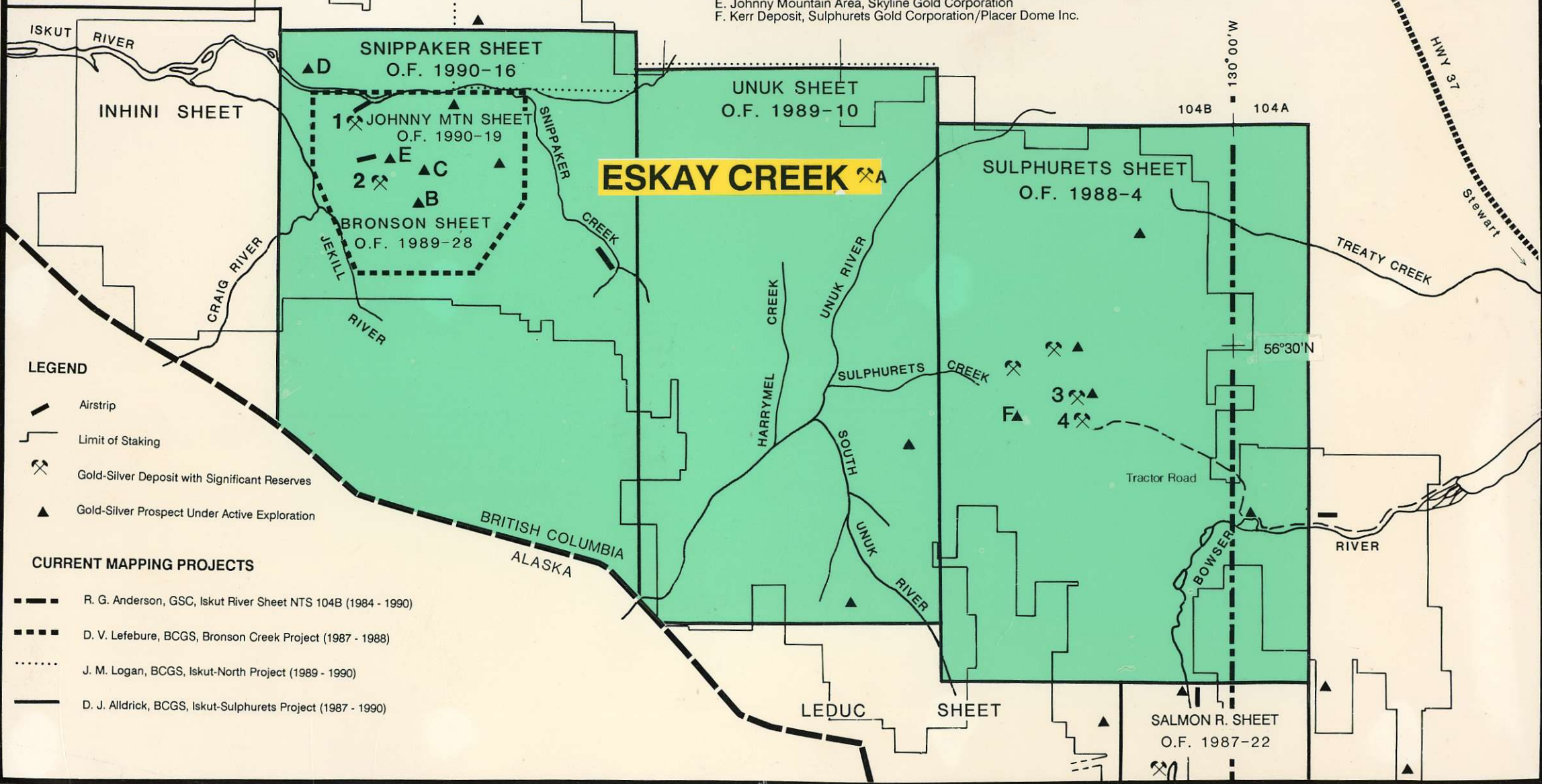
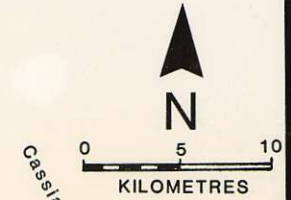
NTS 104 A & B

GOLD MINES UNDER DEVELOPMENT OR IN PRODUCTION

1. Snip Prospect, Cominco Ltd./Prime Resources Group Inc.
2. Johnny Mountain Gold Mine, Skyline Gold Corporation
3. Goldwedge Deposit, Catear Resources Ltd.
4. West, UTC and R-8 Zones, Newhawk Gold Mines Ltd.

MAJOR PRECIOUS-METAL EXPLORATION PROJECTS

- A. Eskay Creek (21 Zone), Prime Resources Group Inc./Stikine Resources Ltd.
- B. INEL Prospects, Inel Resources Ltd.
- C. Bronson Creek Prospect, Cathedral Gold Corporation/Imperial Metals Corporation
- D. Gregor Prospect, Prime Resources Corp./Golden Band Resources Inc./American Ore Ltd.
- E. Johnny Mountain Area, Skyline Gold Corporation
- F. Kerr Deposit, Sulphurets Gold Corporation/Placer Dome Inc.



- LEGEND**
- Airstrip
 - Limit of Staking
 - Gold-Silver Deposit with Significant Reserves
 - Gold-Silver Prospect Under Active Exploration

- CURRENT MAPPING PROJECTS**
- R. G. Anderson, GSC, Iskut River Sheet NTS 104B (1984 - 1990)
 - D. V. Lefebure, BCGS, Bronson Creek Project (1987 - 1988)
 - J. M. Logan, BCGS, Iskut-North Project (1989 - 1990)
 - D. J. Aldrick, BCGS, Iskut-Sulphurets Project (1987 - 1990)