

889933
ESKAY CREEK

Chalcopyrite-sphalerite-galena-silica vein
cutting pyritic siltstone, Contact Unit,
21B Deposit, Eskay Creek, DDH CA89-109: 154m.





Coarse, zoned sphalerite and galena, Contact Unit, 21B Deposit, Eskay Creek, DDH CA89-109: 90.5m.

**Colloform pyrite with red sphalerite in Rhyolite Unit,
below massive sulphide horizon,
21B Deposit, Eskay Creek, DDH CA89-123: 173m.**





**Realgar-quartz vein, Contact Unit,
21A Deposit, Eskay Creek, DDH CA89-23: 57m.**



**Massive stibnite and realgar, Contact Unit,
21A Deposit, Eskay Creek, DDH CA89-21: 60m.**

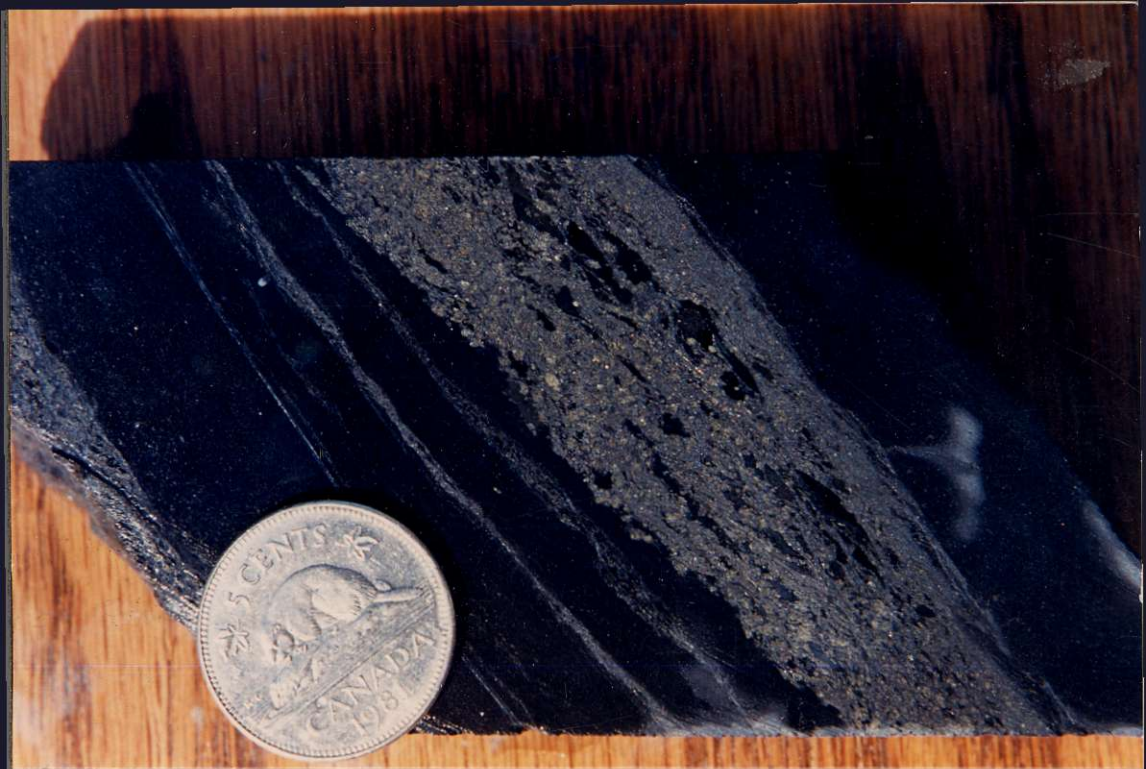
Massive and fracture-filling realgar, Contact Unit, 21A Deposit, Eskay Creek, DDH CA89-23: 61.6m.



2



Disrupted massive sulphides (mainly sulphosalts, sphalerite, pyrite and younger stibnite) in argillite, 21B Zone, ESKAY CREEK.



**Bedded massive sulphides (sulphosalts and sphalerite) in argillite,
21B Zone, ESKAY CREEK.**



ARGILLITE CREEK

21 ZONE

PORPHYRY ZONE

5 ZONE

RED BLUFF

CAMP

ESKAY CREEK

Looking N over ESKAY CREEK

2



Bedded massive sulphides (sulphosalts and sphalerite) in argillite,
21B Zone, ESKAY CREEK.

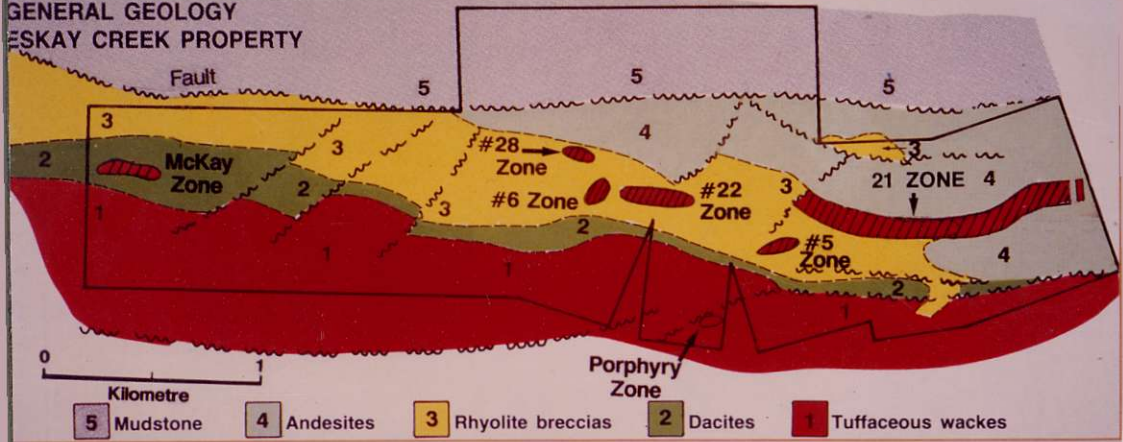
2



Disrupted massive sulphides (mainly sulphosalts, sphalerite, pyrite and younger stibnite) in argillite, 21B Zone, ESKAY CREEK.

CALPINE RESOURCES INCORPORATED

GENERAL GEOLOGY ESKAY CREEK PROPERTY



PRIME EXPLORATIONS LTD. CALPINE RESOURCES INC./STIKINE RESOURCES

General geology of ESKAY CREEK