

YELLOW JACKET

889846

May 13/85

- talk with John Watkins
- rep. CANOVA Res. + Triwest Res. (Juniors)
- 1984 drilling (5 holes) on ARENT cls. along Pine Ck. (opposite Town of Discovery) - several holes 'lost' in high grade native gold 'pockets' and/or major clay seams.
- also traced zone with geophysics (esp. Mag.)
- Host Rocks
 - basalt (greenstone) with ab. magnetite
 - magnesite - alteration bodies - white
 - Qtz veins + chlorite (no graphite!)

Structure

- major ENE shear zone in Cache Ck. rx.

Drilling

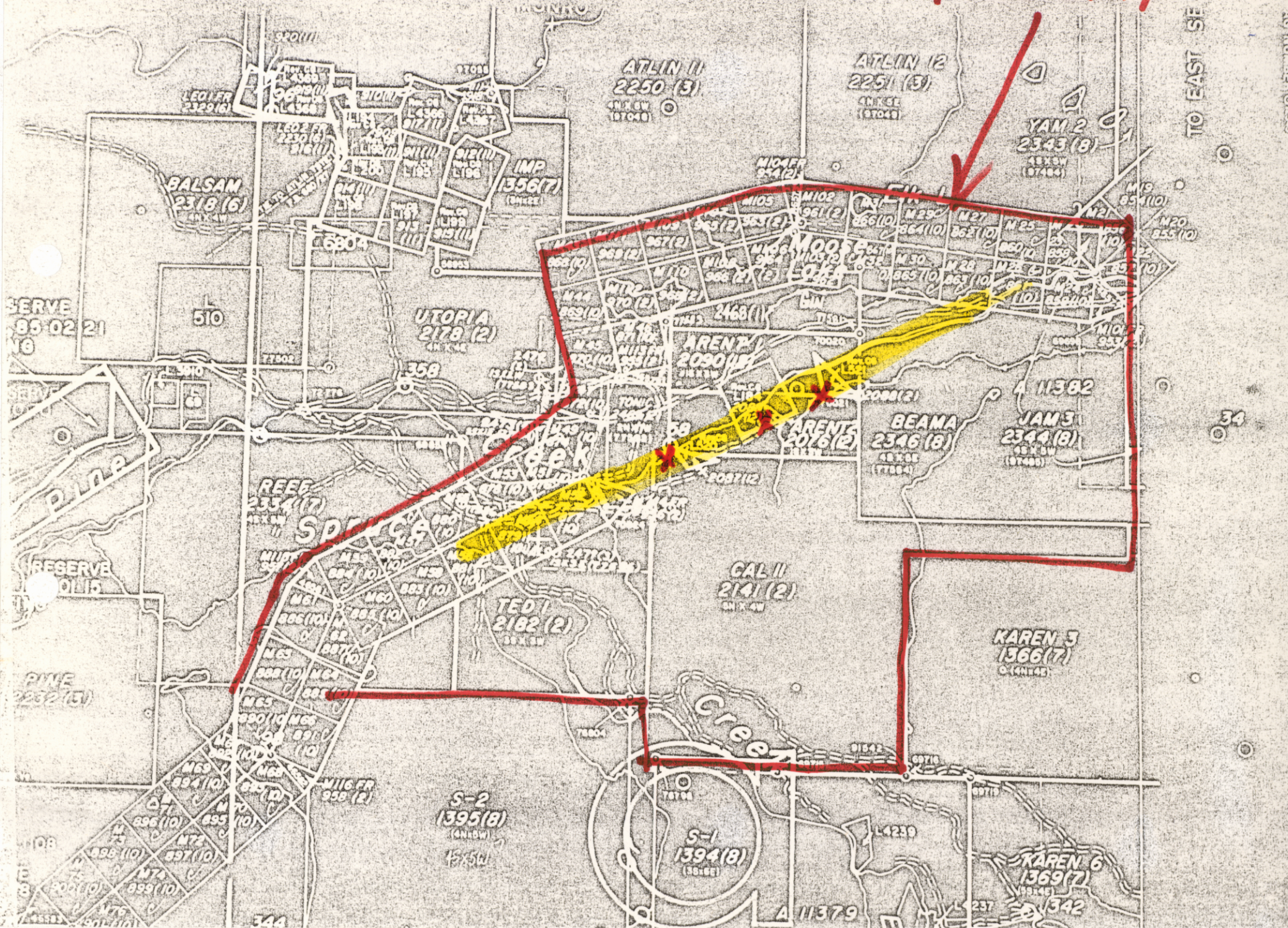
- angle holes to approx. 70 ft. (vertical ~ 60 ft)

1985 PROGRAM

- detailed geol. mapping + geophysics
- weak, tellurium geochem.
- drilling - all summer
- invitation to visit
- Age - 60-70 my? [or younger < 10 my?]
- recently picked up all of Stanac's cls. along Pine Ck.

→ visited July 12/85

PROPERTY



TO EAST SE



SERVE
85-02 21
ING

SERVE
01 15

RESERVE
01 15

PINE
2232 (3)
3N X 3E

EVE
2-18
6

45583
90L(10)
M77

34

344

A 11379

342

YELLOW JACKET

July '85

YJ-85-1

Reverse circulation chips
- alt'd serpentinite

- talk with John Watkins

Dec. 10/85

→ pending deal with Homestake,
- lots of Sniff's in 1985 drilling

YELLOW JACKET

July 8/02

- chat with Len Diduck + Bruce Ballantyne

→ recent trenching by owner, Len Diduck, on north side of line / ct. (immediately opposite rd. from discovery)

→ argillite (s) → quartz vein-rich area in volcs (v)

→ fault next to trench = good placer Au potential

→ feel old (early 1900s) Yellow Jacket head frame/adit has been covered by placer workings → Homestake's work was actually ~ 800 upstream (E) of this great target!

→ key mineralogy - incl. tetrahedrite, tellurides + greenish (malachite)

→ presence of limestone in section (above line) → pot. for Carlin-type (bulk-mineable)?

- Ruby Creek placer - pit - big \$ to drill thru
was to intersect Au-gravel

Tulsequah Chief (Aug. 4/04)

- Bob Carmichael
'04 - 30,000m dth
to end '03 - spent \$28M
327 Ma
- Deep drilling = 2nd (new) leg
Ann. Meet. 91koz Au Equiv.
Smelter: Pb - 4%
Zn - 40%, Au - 28% Cu - 24%
Ag - 18%

Analogy: Myra Falls

- excellent metallurgy
- upside opt'n pot.
102 + 106 holes ('04)
5' ex cellit - eq. 30m

ADANAC (Dave Phillip)

- Aug. 4/04
90-95% recoveries
roast to molybdic oxide
* Ship from Skagway

METLA (Dave Tupper) Aug. 4/04

* gold 'target' (APB + Zn + Cu + Ag)
* 3 other JV's with Aphel
* 1991; 10 dth (Galicia)
* carbonate-shear veins (APB)
* Heterolithic, by
* veins in diorite
* Au assoc. with pyrophyllite

Yellowjacket (Lytalona)

- Muskox Minerals Aug. 4/04
- Anorogenic mesothermal
qtz vein style (after Au)
- most of Au in strike fault
Analogy: Maryland, Calif.
- mineralized diabase (esp. in
fault zone) - frags. with
qtz + carb + gold

10 + dth - upstream of Discovery
- near Gold Run
Pine Ck fault ~ 50m-wide
dip to SE => drill to N.
ie drilling down dip extent of fault.
300m strike of drilling
- computer modelling of all dth
Host: altd ultramafic (ultracamp)
- Muskox using Homestake core
14 dth by muskox prior to
Spring '04

- Gold in: i) qtz veins
ii) br. titanite (+ allanite)
iii) silica - feldspar + carbonates
ultramafite (+ talc)
iv) diabase

- extreme nugget effect.
-> continue in-fill dth
- dth to depth
- airborne survey
- bulk sampling of shallower
dth intersections

THORNU (Adam Stephens)

- Rim Fire Aug. 4/04
- new oban bx - IP target
Regional: 82-93 Ma rocks
dth in Sept. (Darcy Baker)

ILITAN (Chris Savage)

- Kobcoke Aug. 4/04
203 dth - due to ice melt (glacier)
late Crd. Gd. @ contact with
metaseds
- Au - nearby (.27 to .75%)
- Mo - up to 1.9% Mo
IP survey: N-S chargeability

2004 work
- further IP - in fill + fol.
- 500m dth (2 holes)

2nd Atlin Geoscience Forum
Aug. 4/04

Tom Schrock