

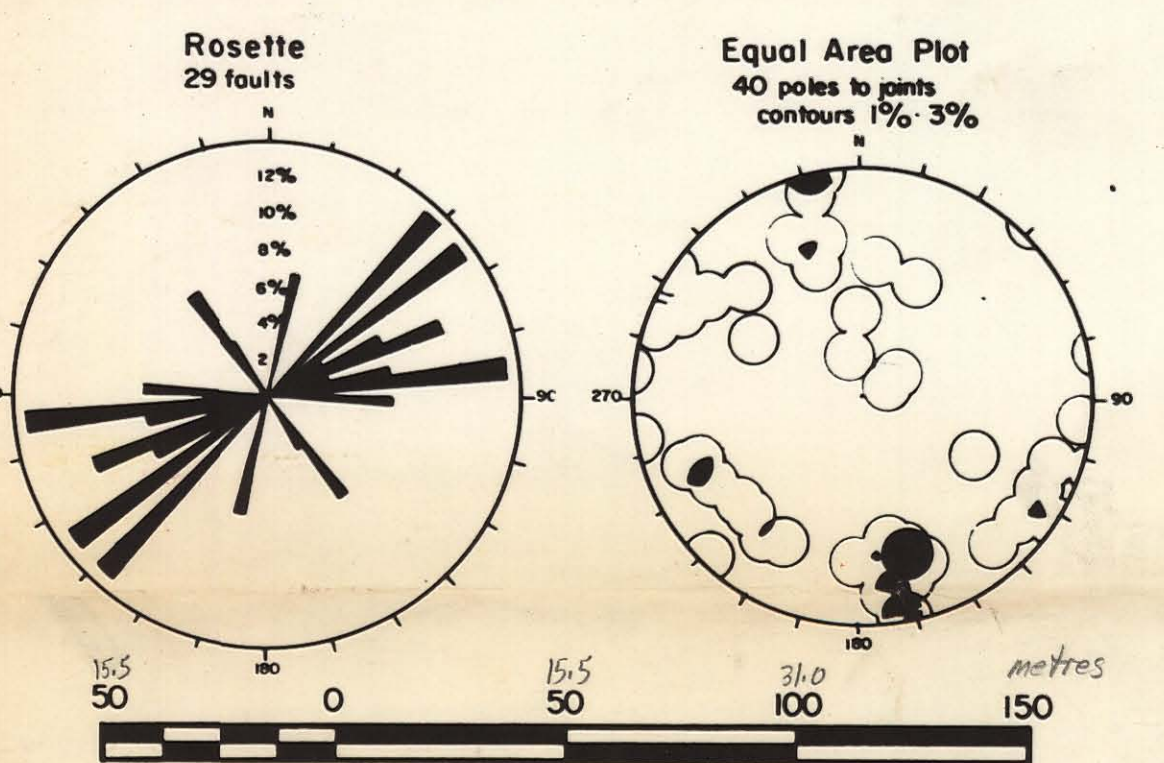
Legend

- Diorite Breccia
- Granodiorite
- Feldspar Porphyry (Granite)
- Limestone
- Greywacke, Pelitic Metasediments
- Skarn
- Quartz Vein
- Sulfides (pyrite, chalcopyrite, arsenopyrite, minor sphalerite, galena)
- Granodiorite (AG1)

Assay Values — 7.5% — 0.75, 6.86, 2.16 (intercept) (Au), (Ag), (Cu)

- Foliation, Bedding
- Pit
- Fault
- Geologic Contact
- Limit of Outcrop
- Grid Line
- DD.H. Section
- Diamond Drill Hole
- Packsack Drill Hole
- Swampy Area
- Chain and Transit Survey Hub
- Stadia Survey Hub
- Form Lines (5' Interval)

Note - Form lines were established by Stadia Survey.



SCALE: 1 INCH TO 50 FEET (Plan and Sections) 1:500

(FALCONBRIDGE NICKEL MINES LIMITED)

PROPERTY: HECHT GOLD CORP.

Banks Island Claims

LOCATION: 70 mi S of Prince Rupert

TYPE OF MAP: Geology and Diamond Drilling

WORKING PLACE: Bob Zone

BASED ON: Fieldwork by B.M. and R.J.E.

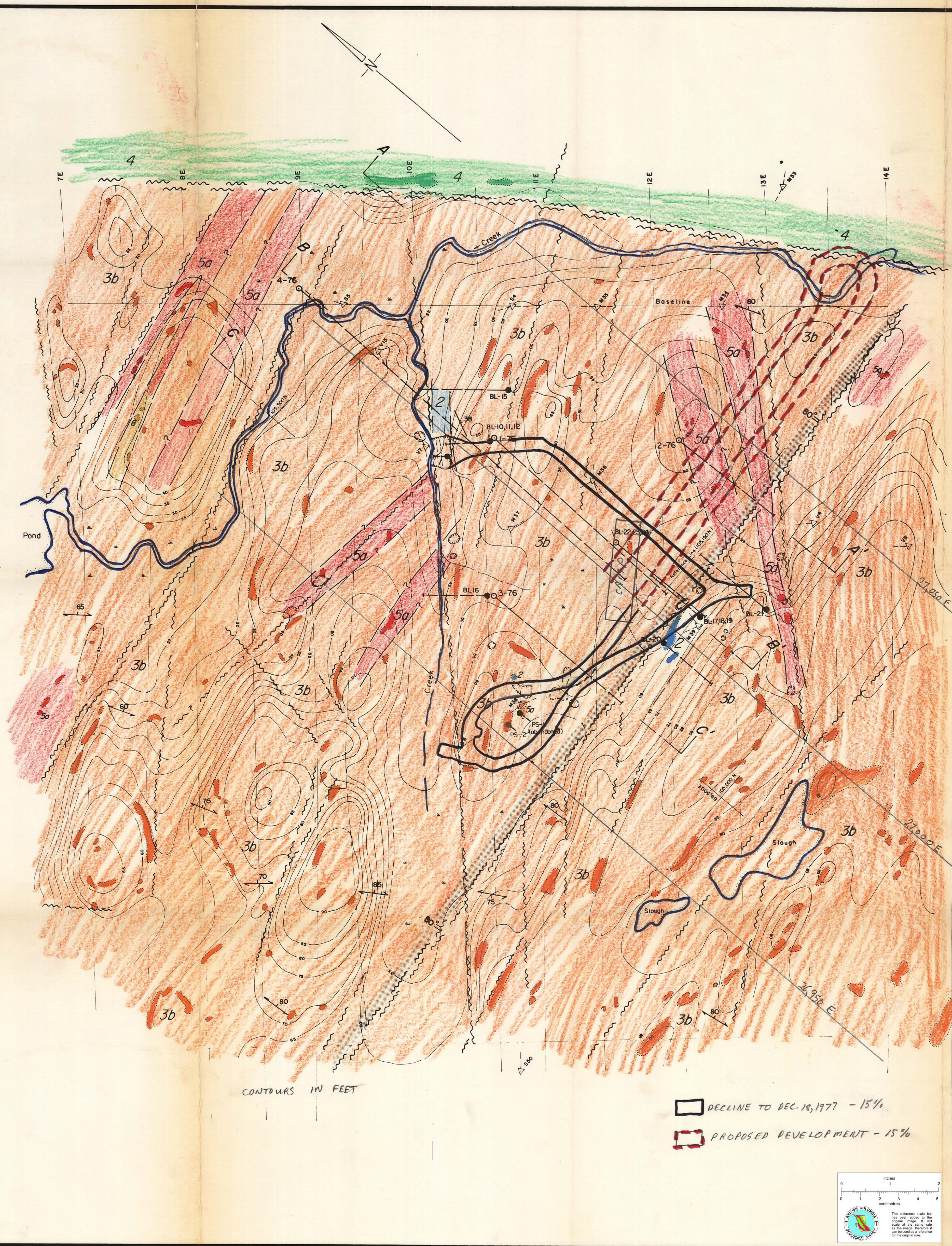
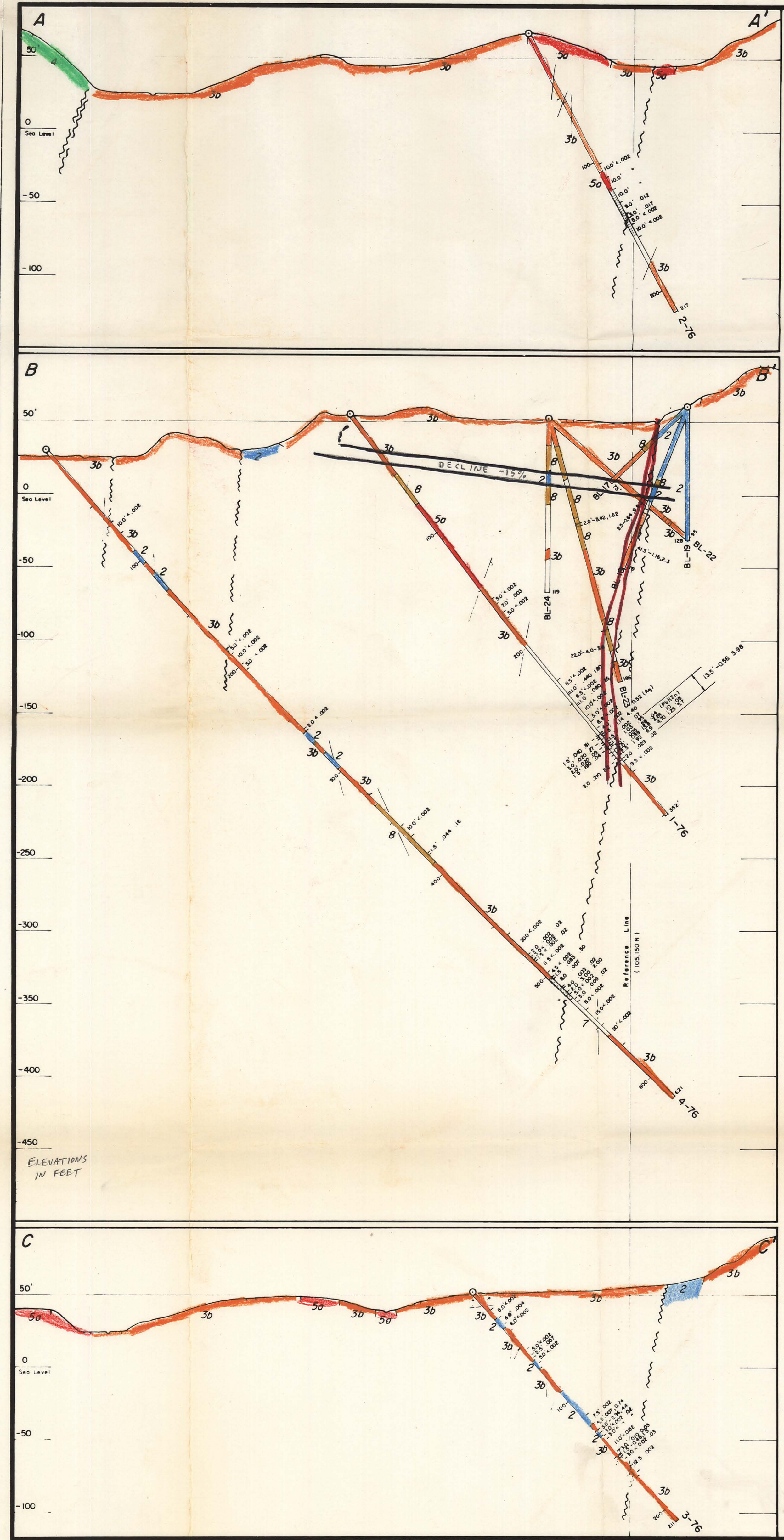
DATE OF WORK: Apr. May / 76

DRAWN BY: R. J. E.

DATE: July / 76

MAP REF. NO.: N.T.S. NO.: 1036/8

FIG. NO.: 4



DECLINE TO DEC. 16, 1977 - 15%

PROPOSED DEVELOPMENT - 15%

