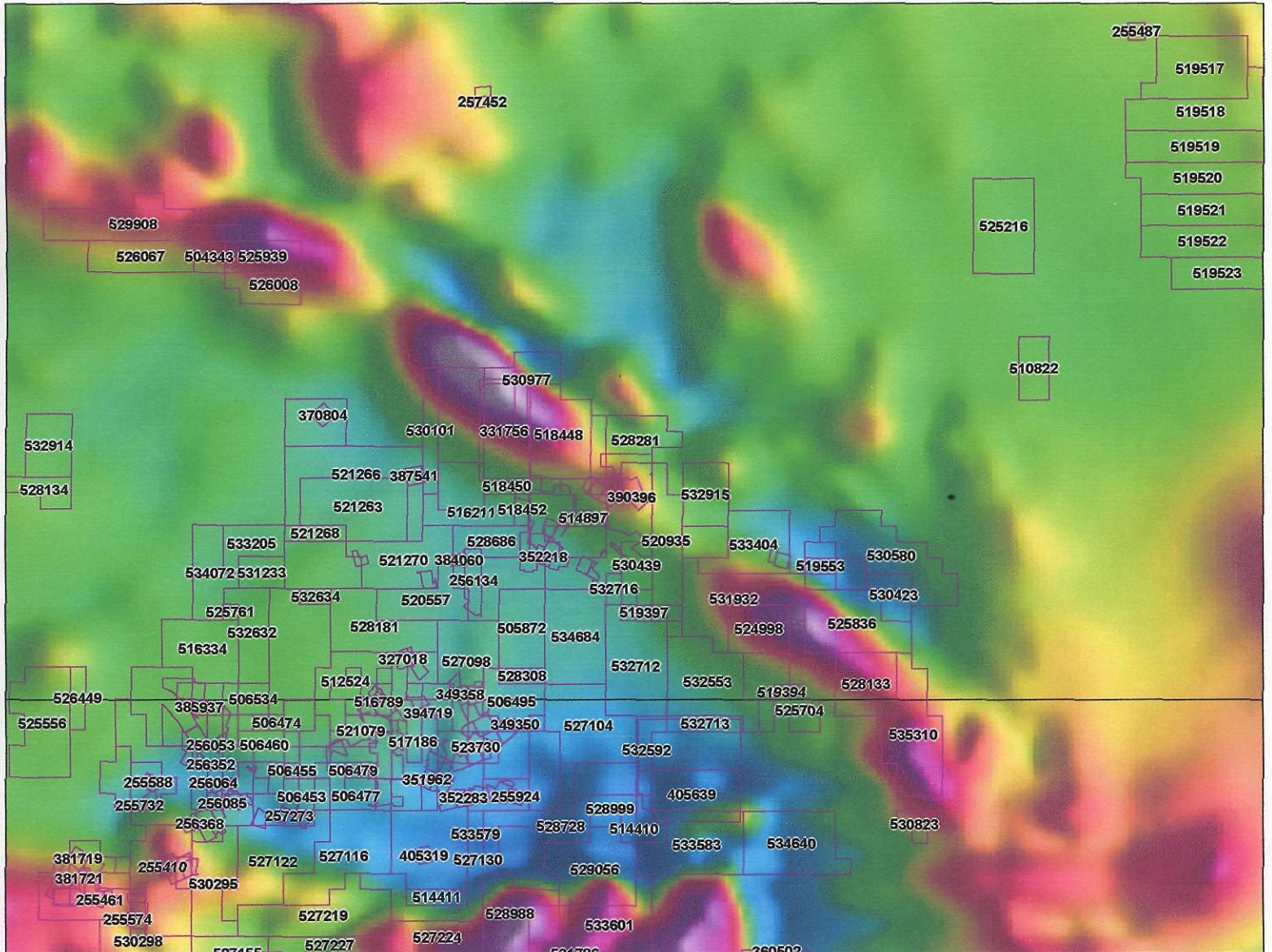
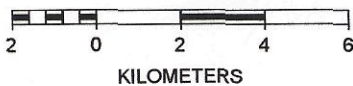


# BCGS Geology UTM 11

Whitewater  
889486



SCALE 1 : 170,514



Robin Day et al. tenures: 1) 525939, 526008  
2) 531932, 533404, 535310  
3) 530580

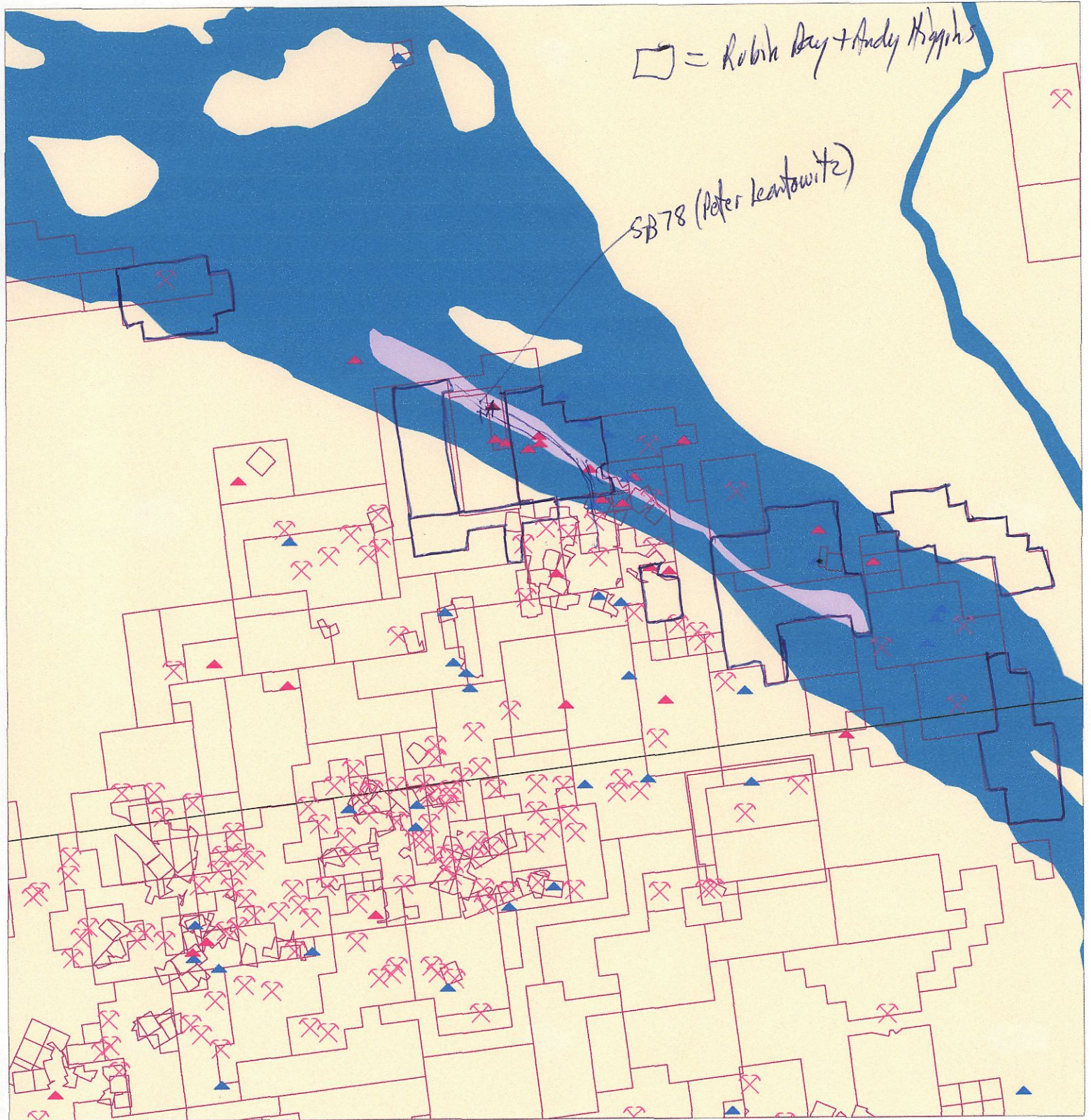
082K5W

082k-03

[http://webmap.em.gov.bc.ca/mapplace/maps/minpot/pdac\\_z11.mwf](http://webmap.em.gov.bc.ca/mapplace/maps/minpot/pdac_z11.mwf)

June 15/06  
(from RD)

# Exploration Assistant



SCALE 1 : 128,092



KILOMETERS

N

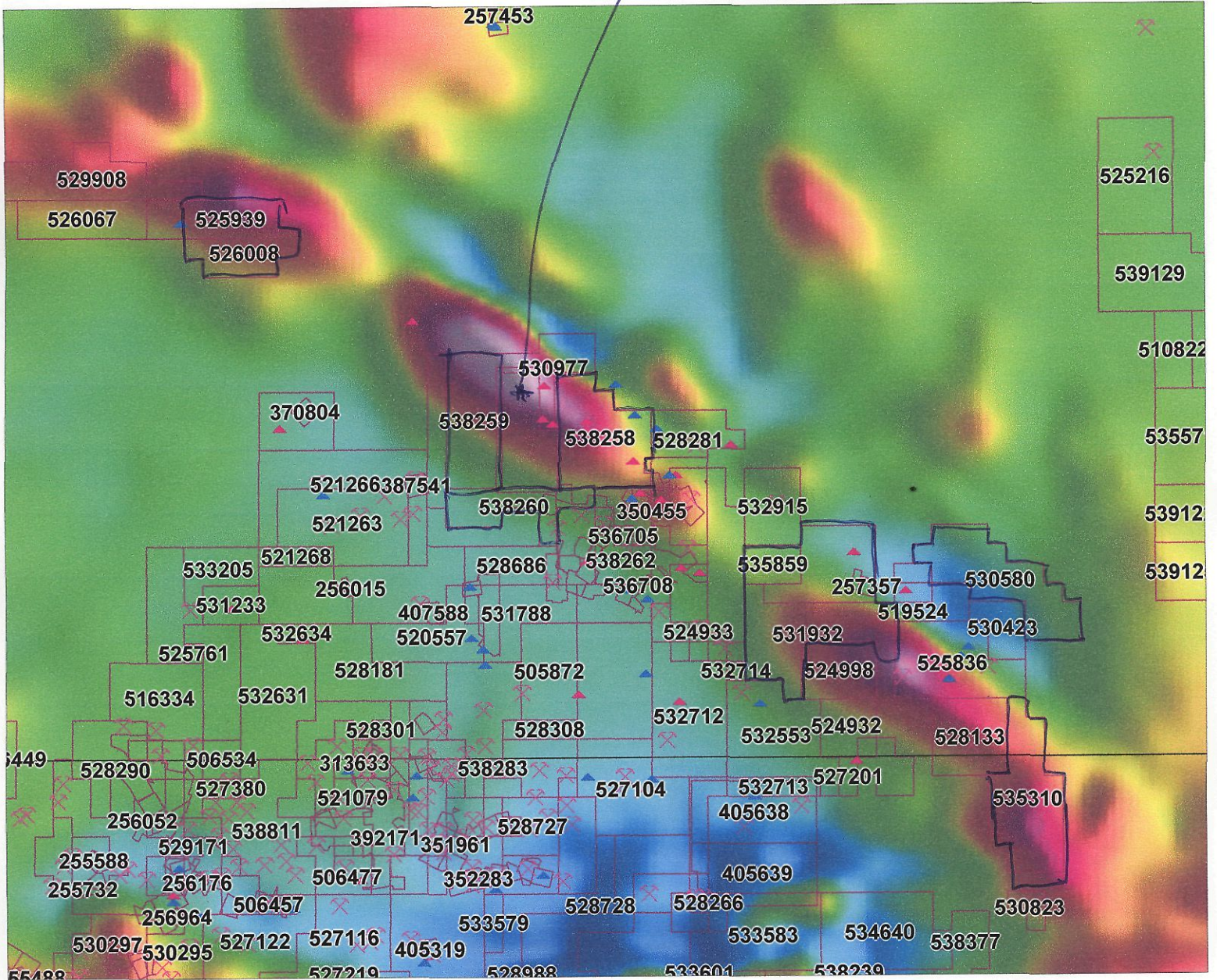


August 25, 2006 2:06 PM

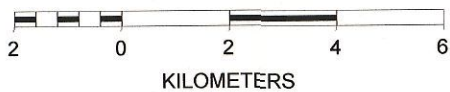
# BCGS Geology UTM 11

SB 78 (Peter Leontowitz)

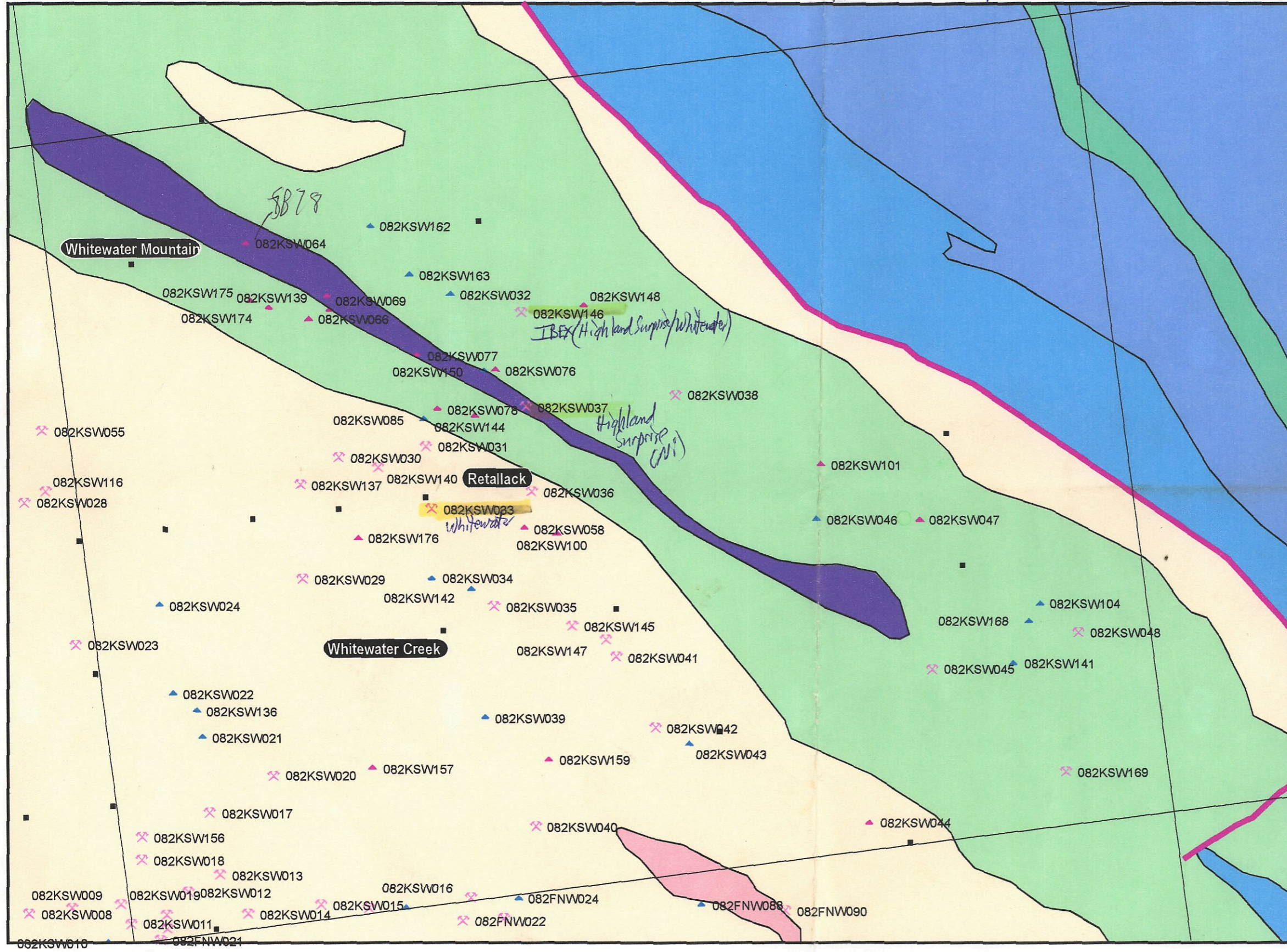
□ = Robin Day  
& Andy Higgins



SCALE 1 : 141,532



GEM 1970 "SB" Mineral Claims in which + Bulletin No. (1945) - Whitewater + Lucky Jim Mines  
 - up to 6% Ni in ch +  
 TPT (up?)  
 50°06'00"  
 June 15/06



BRITISH COLUMBIA Ministry of Energy, Mines and Petroleum Resources  
 BRITISH COLUMBIA GEOLOGICAL SURVEY

### MINFILE Reports in the Whitewater Creek Region

T.G. Schroeter, and E. Man  
 June, 2006

✕ Past Producer    ▲ Prospect    ▲ Showing  
 ■ BC Locality    — Contacts    — Faults  
 082KSW176 MINFILE Number

#### Geology Legend

Middle Jurassic		
<b>Nelson Batholith</b>		
	MJNgd	granodioritic intrusive rocks
Triassic		
<b>Slocan Group</b>		
	TrSic	limestone, slate, siltstone, argillite
Carboniferous to Permian		
<b>Kaslo Group</b>		
	CPus	serpentine ultramafic rocks
	CPKa	basaltic volcanic rocks
Upper Mississippian to Permian		
<b>Milford Formation:</b>		
	uMPPM	limestone, slate, siltstone, argillite
Cambrian to Devonian		
<b>Lardeau Group</b>		
	CmDLJ	Jowett Formation: basaltic volcanic rocks
	CmDLB	Broadview Formation: limestone, slate, siltstone, argillite
	CmDLI	Index Formation: mudstone, siltstone, shale fine clastic sedimentary rocks

50°00'00"

1:60,000

0 500 1000 2000 Meters

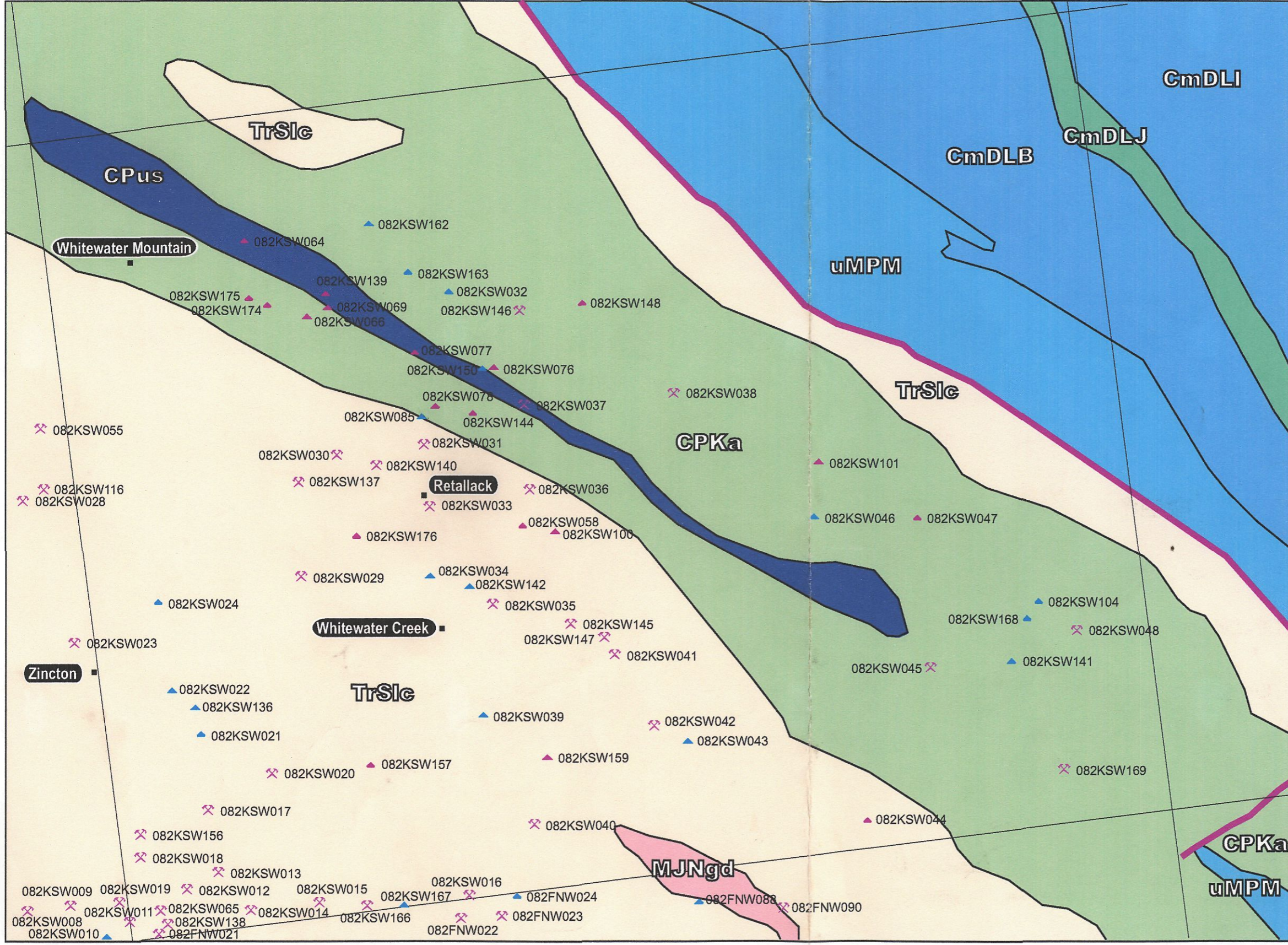
117°12'00"      117°00'00"

MINFILE: NTS 082kSW - Nakusp

Whitewater/Highland Surprise  
 - Peter Leontowitz  
 visited - Aug. 25/06 (TGS)

Handwritten initials or signature in the top right corner.

50°06'00"



Ministry of Energy, Mines and Petroleum Resources



### Whitewater Creek Region (MINFILE Reports)

T.G. Schroeter, and E. Man  
June, 2006

- Past Producer
- Prospect
- Showing
- BC Locality
- Contacts
- Faults

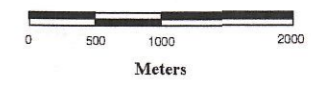
082KSW176 MINFILE Number

#### Geology Legend

Middle Jurassic		
<i>Nelson Batholith</i>		
	MJNgd	granodioritic intrusive rocks
Triassic		
<i>Slocan Group</i>		
	TrSic	limestone, slate, siltstone, argillite
Carboniferous to Permian		
<i>Kaslo Group</i>		
	CPus	serpentinite ultramafic rocks
	GPKa	basaltic volcanic rocks
Upper Mississippian to Permian		
	uMPPM	Milford Formation: limestone, slate, siltstone, argillite
Cambrian to Devonian		
<i>Lardeau Group</i>		
	CmDLJ	Jowett Formation: basaltic volcanic rocks
	CmDLB	Broadview Formation: limestone, slate, siltstone, argillite
	CmDLI	Index Formation: mudstone, siltstone, shale fine clastic sedimentary rocks

50°00'00"

1:60,000

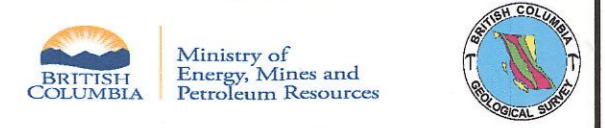
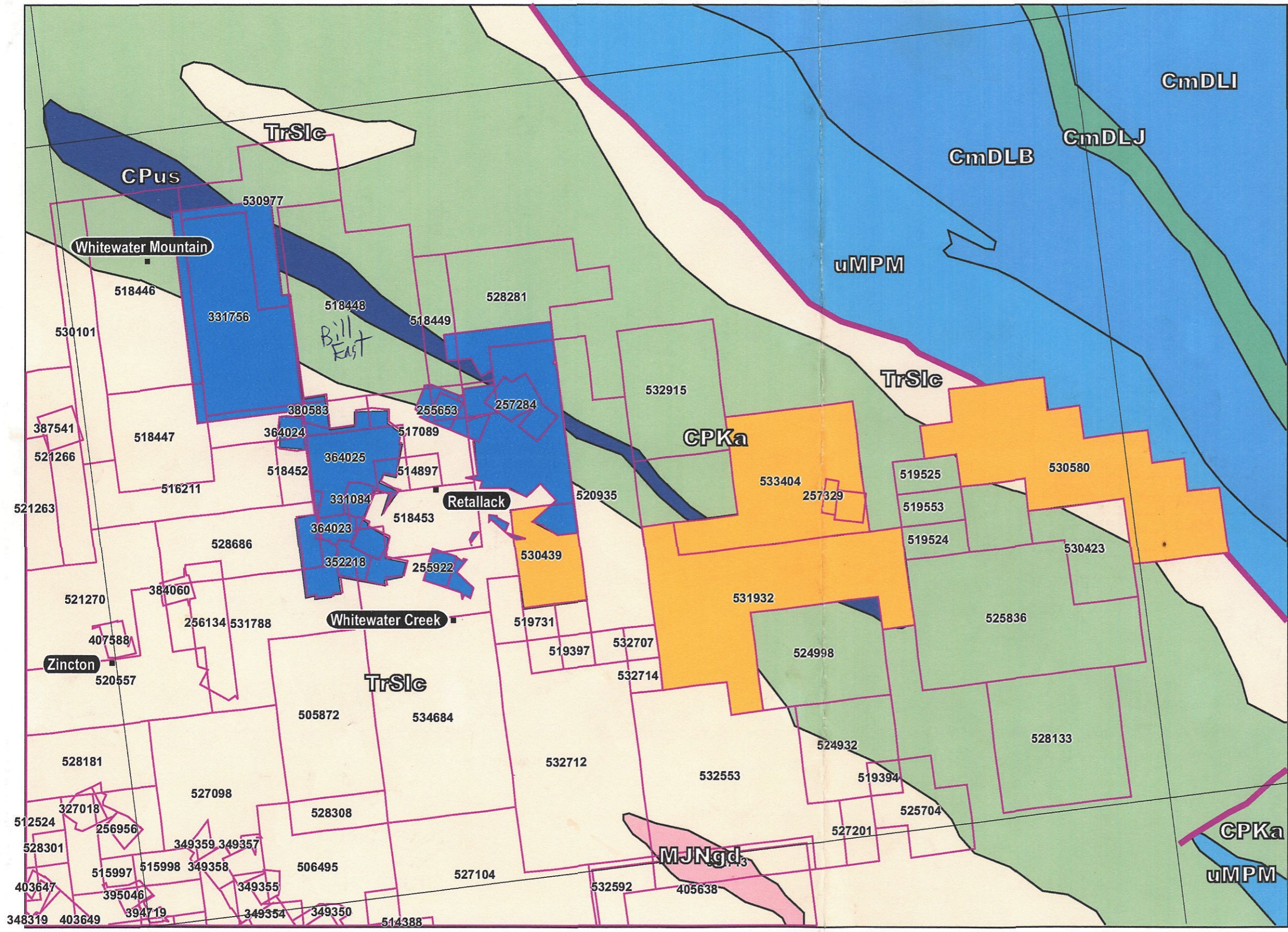


117°12'00"

117°00'00"

June 15/06

50°06'00"



### Whitewater Creek Region (Selected Mineral Tenures)

T.G. Schroeter, and E. Man  
June, 2006

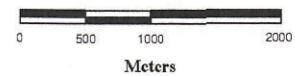
- 525939 Tenure Number             Mineral Titles Outline
- Robin Charles Day     Peter Leontowicz
- BC Locality     Contacts     Faults

#### Geology Legend

<b>Middle Jurassic</b>		
<i>Nelson Batholith</i>		
<span style="display: inline-block; width: 20px; height: 10px; background-color: #f08080; border: 1px solid black;"></span>	MJNgd	granodioritic intrusive rocks
<b>Triassic</b>		
<i>Slocan Group</i>		
<span style="display: inline-block; width: 20px; height: 10px; background-color: #f5deb3; border: 1px solid black;"></span>	TrSic	limestone, slate, siltstone, argillite
<b>Carboniferous to Permian</b>		
<i>Kaslo Group</i>		
<span style="display: inline-block; width: 20px; height: 10px; background-color: #191970; border: 1px solid black;"></span>	CPus	serpentinite ultramafic rocks
<span style="display: inline-block; width: 20px; height: 10px; background-color: #6aa84f; border: 1px solid black;"></span>	CPKa	basaltic volcanic rocks
<b>Upper Mississippian to Permian</b>		
<span style="display: inline-block; width: 20px; height: 10px; background-color: #4682b4; border: 1px solid black;"></span>	uMPPM	Milford Formation: limestone, slate, siltstone, argillite
<b>Cambrian to Devonian</b>		
<i>Lardeau Group</i>		
<span style="display: inline-block; width: 20px; height: 10px; background-color: #388e3c; border: 1px solid black;"></span>	CmDLJ	Jowett Formation: basaltic volcanic rocks
<span style="display: inline-block; width: 20px; height: 10px; background-color: #4169e1; border: 1px solid black;"></span>	CmDLB	Broadview Formation: limestone, slate, siltstone, argillite
<span style="display: inline-block; width: 20px; height: 10px; background-color: #4169e1; border: 1px solid black;"></span>	CmDLI	Index Formation: mudstone, siltstone, shale fine clastic sedimentary rocks

50°00'00"

1:60,000



117°12'00"

117°00'00"

Whitewater Highland Surprise: Peter Leontowicz  
 ? ? : Robih Day + Andrew Higgins ~~(Peter Leontowicz)~~