

Cazador Explorations Limited

P.O. BOX 602, ALDERGROVE, B.C. V0X 1A0
TELEPHONE: (604) 589-5000
FAX: (604) 589-4112

Watson Bar
889404

December 22, 1987

Geological Survey Branch
Mineral Resources Division
Ministry of Energy, Mines and Petroleum Resources
Province of British Columbia
Suite 159, 800 Hornby Street
Vancouver, B.C.
V6Z 2C5

Attention: Mr. Tom G. Schroeter, M.Sc., P.Eng.
Senior Regional Geologist

Dear Tom:

RE: HANSON LAKE AND STIRRUP CREEK EXPLORATION PROJECTS

Thank you for the time you took yesterday to visit with me and discuss the subject projects. If you obtain information that may be helpful to our exploration programs please do not hesitate to contact me or Roy Lammle at 589-5000.

For your information and files I have enclosed information sheets on both projects.

Sincerely,



John A. Chapman
President

encl.

cc. Mr. C.A. Roy Lammle, B.ASc., P.Eng.

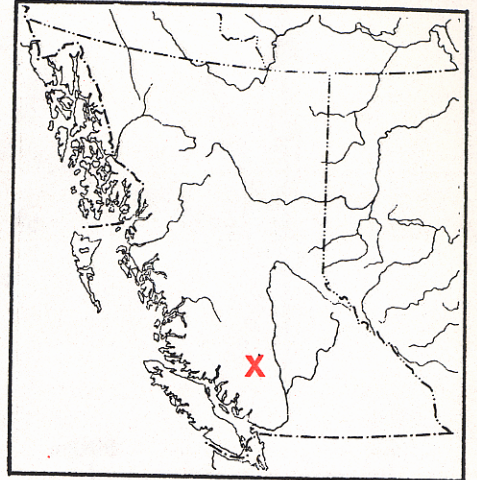
LOG NO	DEC 29 1987	VAN 4
ACTION:	1) Hanson Lk. - new	
	2) Stirrup Ck. - new	
FILE NO:	→	

Cazador Explorations Limited

PO. BOX 602, ALDERGROVE, B.C. V0X 1A0
TELEPHONE: (604) 589-5000
FAX: (604) 589-4112

Cazador's Stirrup Creek epithermal gold property is located 35 kilometres southeast of the Blackdome Gold Mine, a rich new Canadian producer near Clinton, British Columbia. Recently completed soil geochemical surveys of a portion of the Cazador claim area have defined encouraging exploration targets. Gold with peak concentration of 270 gm per tonne, and mercury in soil samples define a number of excellent zones for detailed exploration.

The Blackdome-Lillooet gold district of British Columbia has been known from the gold rush days. The centrally located Stirrup Creek portion was one of the last gold camps found in the province and intermittent placer gold mining on the creek continues even today.

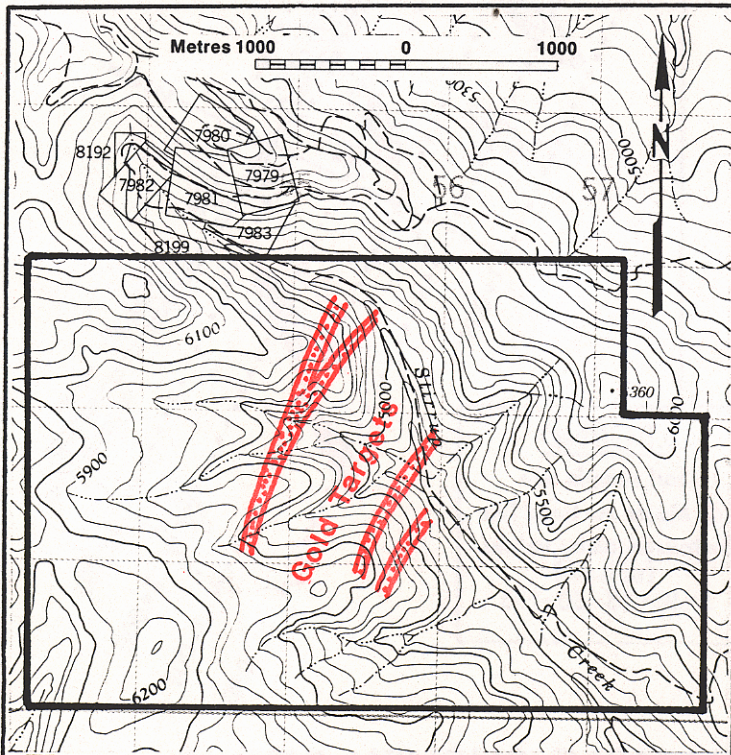


Several major companies are conducting exploration programs for epithermal gold mineralization on nearby claims, both to the north and to the south. Gold in bed rock grading 3 gm per tonne and in float grading 20 gm per tonne, .6 oz/ton, has been found. Associated antimony and mercury zones with carbonatization and kaolinization have also been defined.

Direction of glacial transport in the area was north-northeast. All of the placer production from Stirrup Creek has come from an area immediately down-ice from Cazador's ground. Accordingly, bedrock exploration potential is excellent.

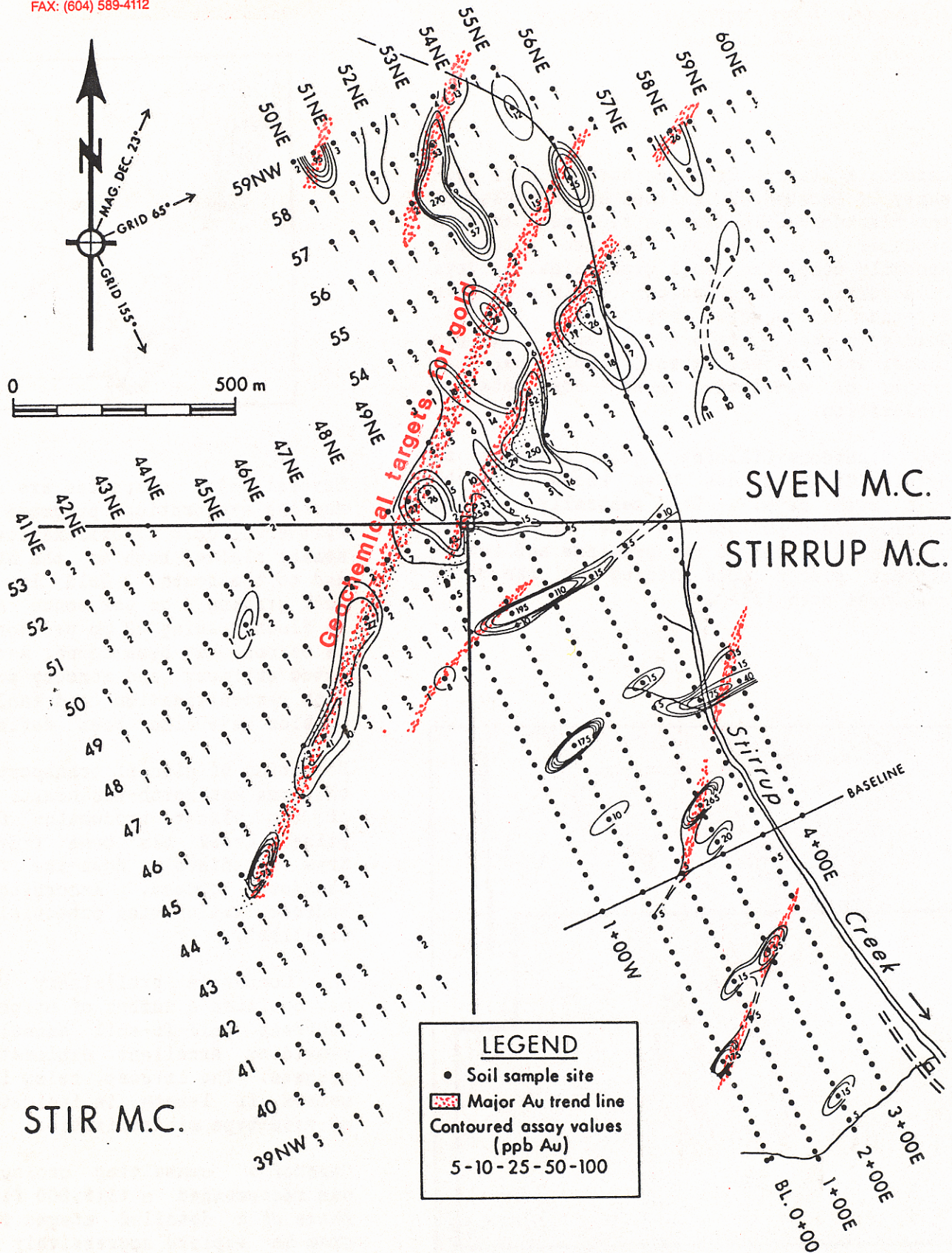
The Company's preliminary work has outlined a number of strongly coherent gold-in-soil anomalies providing excellent exploration targets. The largest, being 1500 metres in length, is indicative of vein-type mineralization.

Cazador's consulting geologist has recommended a \$113,000 first phase of a detailed staged program to explore aggressively for the source of the gold.



Cazador Explorations Limited

PO. BOX 602, ALDERGROVE, B.C. V0X 1A0
 TELEPHONE: (604) 589-5000
 FAX: (604) 589-4112



GEOCHEMICAL SOIL SAMPLE SURVEY FOR Au - STIRRUP CREEK AREA -