

Trail Metallurgical Operations

TRAIL
888922

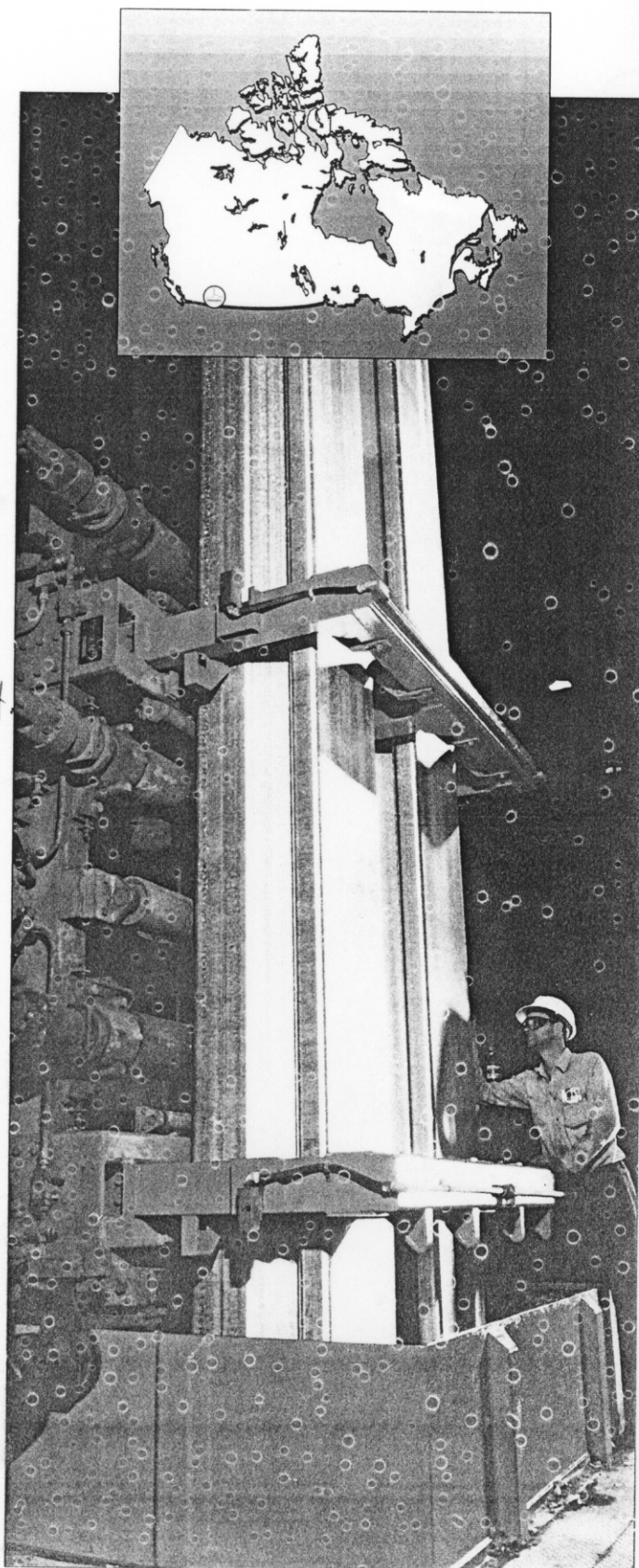
Cominco's integrated smelting and refining complex is located at Trail, in southeastern British Columbia.

More than 700,000 tonnes of concentrates are processed at Trail every year, yielding a wide range of metals and related by-products, including refined zinc, lead, silver, gold, cadmium, bismuth, indium, germanium concentrate, germanium dioxide, copper sulphate, copper arsenate, sodium antimonate and a variety of sulphur products and agricultural fertilizers. The two major metals are zinc and lead.

The majority of the zinc and lead concentrates treated at Trail come from the Sullivan mine in Kimberley, B.C., and the Red Dog mine in Alaska. The operation also purchases concentrates from non-Cominco mines, located mainly in the northwestern United States and South America. Refined metal is shipped primarily to customers in Canada, the United States and Pacific Rim countries.

Smelting and refining have been carried out at Trail since the turn of the century. Over the years, the process and plants have been modified as technology improved. In the late 1970s, the company began an extensive modernization program at Trail to make the operation one of the cleanest and most efficient in the world. Since then, nearly \$750 million has been spent on a new zinc electrolytic and melting plant, the world's first zinc pressure leaching plant, new purification systems, a higher capacity cadmium plant and a new lead smelter feed plant.

▶ Zinc logs are prepared to be cut into C-Cast jumbos.



Cominco, 1997

Trail is currently in the process of installing a new lead smelter — using the Kivcet smelting process — and a slag fuming plant. The new smelter will have a capacity of 120,000 tonnes per year, bringing Trail's lead production back up towards historical levels. In addition, a series of smaller projects in Zinc Operations will boost production to 290,000 tonnes from the current 272,000 tonnes. These lead and zinc projects are scheduled for completion by year-end 1996.

Trail employs approximately 2,000 people.

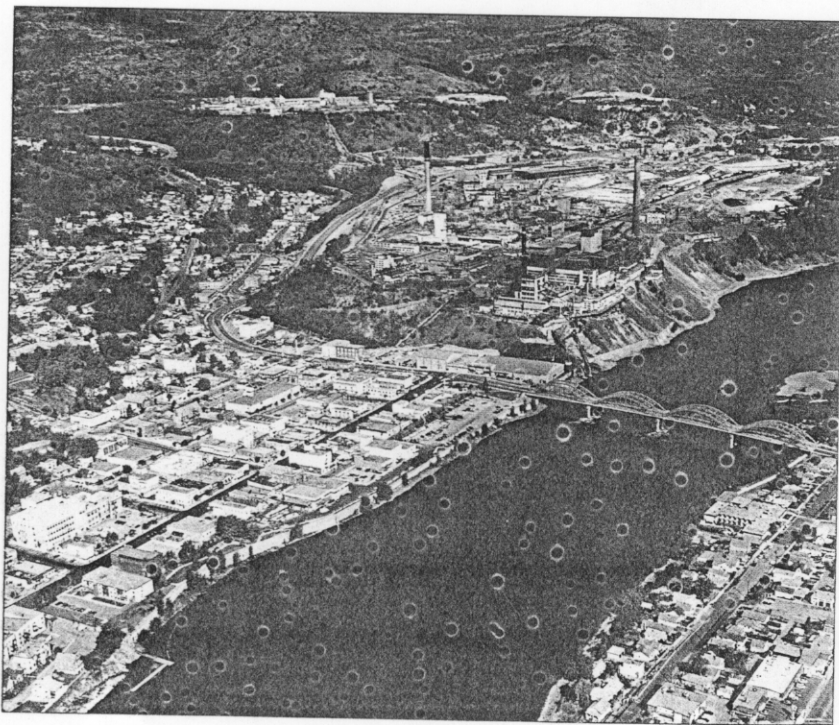
Cominco Ltd.

Trail Operations

P.O. Box 1000

Trail, BC Canada V1R 4L8

Tel. (604) 364-4222 Fax (604) 364-4109



Lower left: John Batty, Senior Operator, checks the flow through the cells in the electrolytic and melting plant. Top right: Lead pigs are bundled by Brian Zahn, lead caster; Trail Metallurgical Operations.