

LEGEND

11,300

- 557 Metasediments - Middle Cambrian
 - 918 Igneous intrusions including rare intermediate composition dykes, both older and younger than stratum 557
 - 554 Metasediments - Upper Cambrian
 - a. Felsic siltstone
 - b. Intermediate siltstone
 - c. Siltstone
 - 526 Metasediments - Lower Cambrian
 - 916 Quartz-chlorite-amphibole gneiss and schist with minor amounts of mafic and ultramafic rocks
 - a. Gneiss and schist
 - b. Mafic
 - c. Calcisilicate-mafic skarn
 - d. Magnetite skarn
 - e. Hornblende
- Note: Stratigraphic relationships are not implied by the sequence of lettered lithological units

SYMBOLS

- Geological contact: defined, approximate, assumed
- Unconformity: defined, approximate or assumed
- Layering or metamorphic layering, tops unknown: vertical, inclined
- Fault: defined, approximate, assumed
- MAIN SHOWING: Limited locale: identifier
- CAMP SHOWING: Minor mineral occurrence: identifier
- Rock chip sample sites: identifier; minerals present: gold in parts per million, cobalt in parts per million, silver in parts per million
- Rock chip sample sites: identifier; minerals present: gold in parts per million, cobalt in parts per million, silver in parts per million
- Geological stream sediment sample sites: identifier; gold in parts per million, silver in parts per million, cobalt in parts per million
- Mineral claim held by Texaco Canada Resources Ltd.: name; local corner post shown
- Reconnaissance geophysical survey lines: identifier, see Appendix X for results

ABBREVIATIONS

Ag	argillite	mag	magnetite
As	arsenopyrite	pe	pyrrhotite
Cp	chalcopyrite	ppm	parts per million
Ch	chert	py	pyrite
G	gussan	V.G.	visible gold
L or L	less than 0.01		



THE ASSOCIATION OF
PROFESSIONAL ENGINEERS,
GEOLOGISTS and GEOPHYSICISTS
OF ALBERTA
PERMIT NUMBER
P 2374
TRIGG, WOOLLETT
CONSULTING LTD.

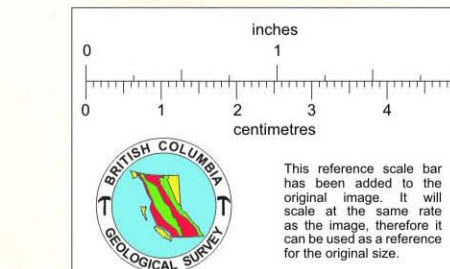
TEXACO CANADA RESOURCES LTD.

TP MINERAL CLAIM
**GEOLOGY,
PROSPECTING,
SAMPLING**

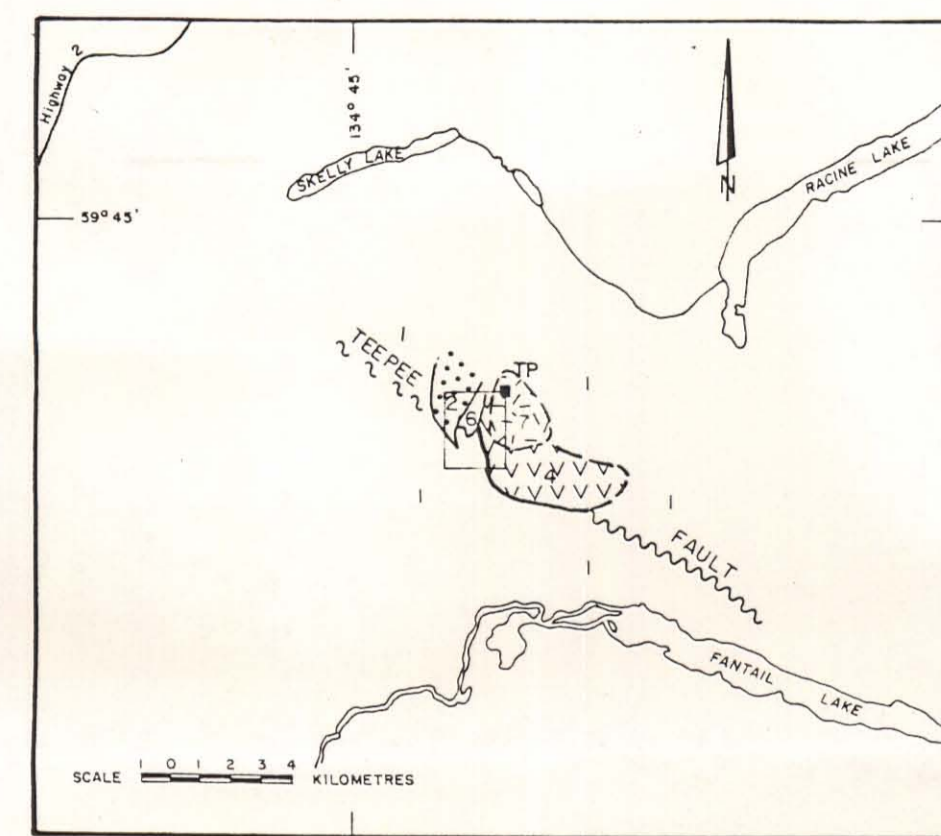
NTS 104M/10E
TRIGG, WOOLLETT CONSULTING LTD.
EDMONTON, ALBERTA

Field Geologist: P.G. Lhotka

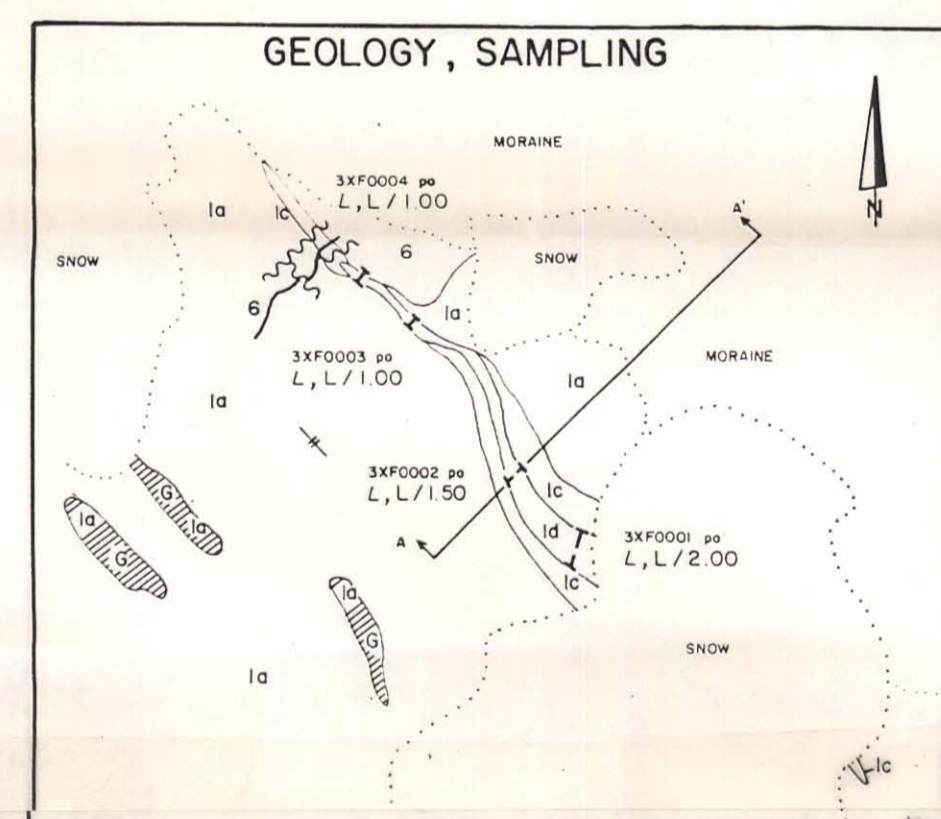
NOVEMBER, 1963



This reference scale bar has been added to the original image. It will scale at the same rate as the image. However, it can be used as a reference for the original size.

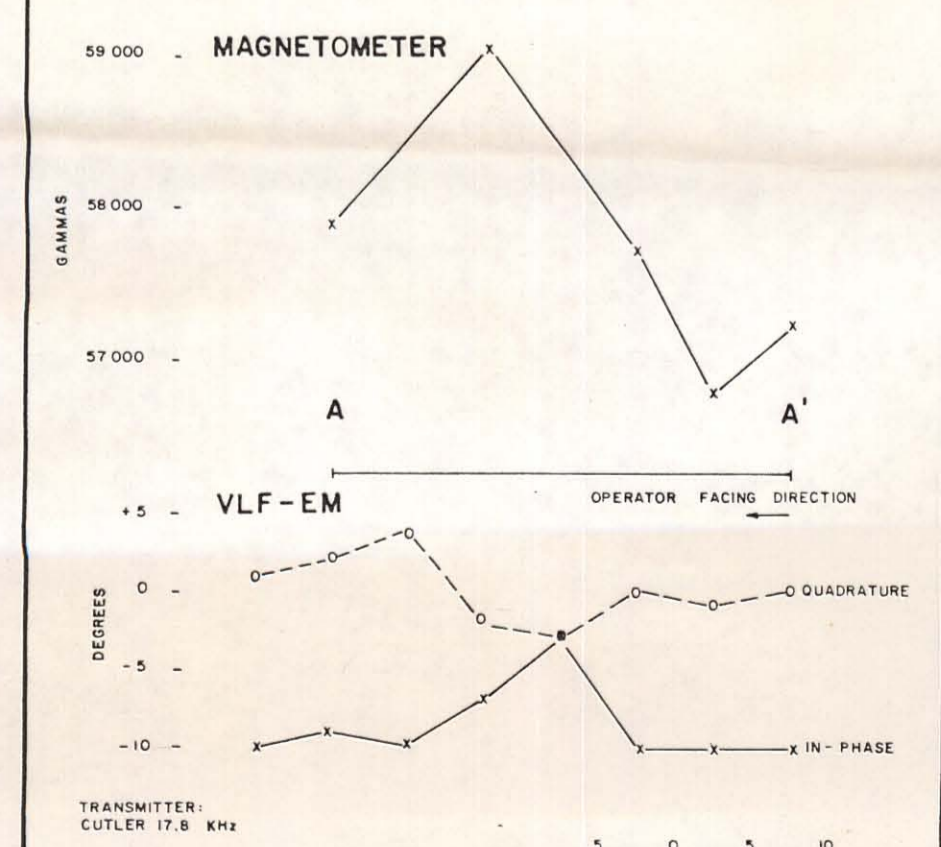


A. LOCATION AND REGIONAL GEOLOGY

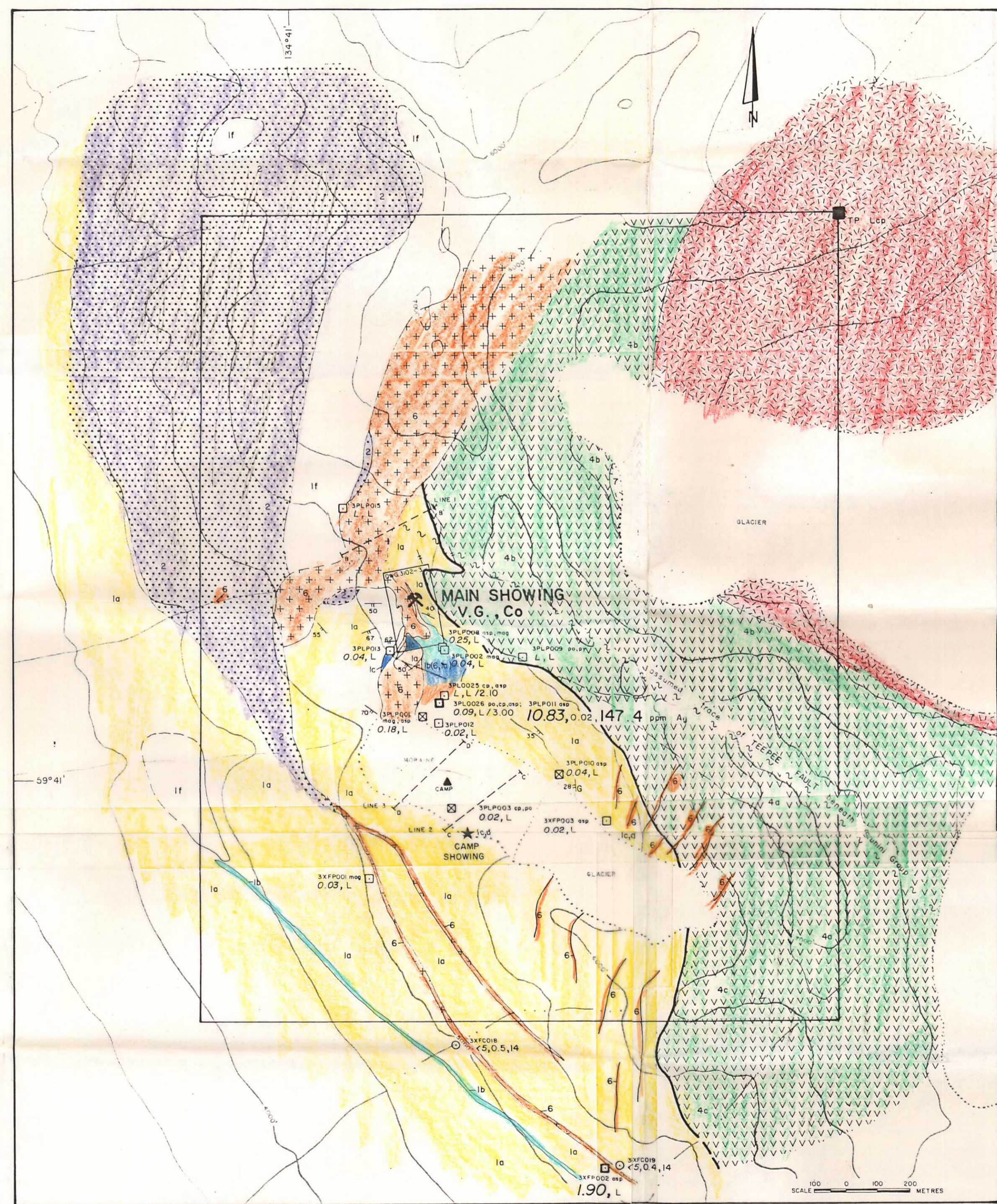


denotes rock chip sample site

GEOPHYSICAL PROFILES LINE A-A'



C. CAMP SHOWING



B. TP MINERAL CLAIM - GEOLOGY, PROSPECTING, SAMPLING