

TAYLOR-WINDFALL → Battlement
888620 → Taylor-Windfall
920/34 920 028

BATTLEMENT & TAYLOR WINDFALL PROPERTY

The property is overlain by a massive volcanic hosted acid sulphate type epithermal system which is similar to the Pueblo Viejo deposit with a content of 5 to 20 million oz. of gold-silver (Dominican Republic). The similarities are in the intensity of the epithermal alteration of similar rock type.

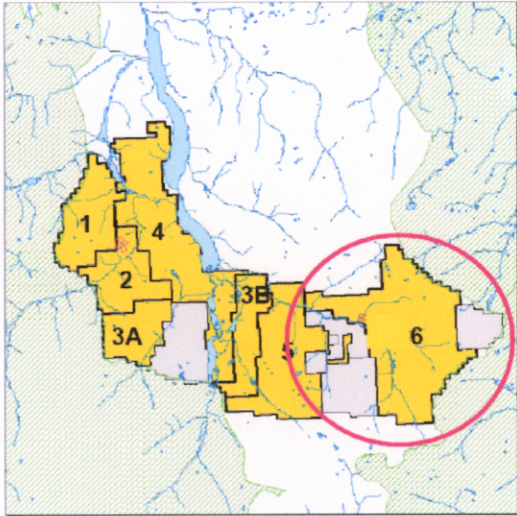
The alteration belt is 10,000 meters long x 2,000 meters wide and seems to be introduced along fault structures and breccia zones paralleling the Tchaikazan fault. It is characterized by a high level of intense argillic alteration composed mainly of quartz-alunite and pyrophyllite-diaspore-kaolinite.

The Rae Spur covers an area 2000 meters x 6000 meters with enrichment of Au, Ag, Cu, Zn in rocks and Hg, Sb, As, Ba anomaly in soils. It has one drill hole, testing the lower pyritic horizon and assaying 17g Au over 16 meters.

The Taylor Windfall, 100m x 1350m is indicative of a potential Bonanza type gold. Mineralization in altered volcanic rocks contains 0.9 oz/t gold and 3.5oz/t silver. Past production indicates 14,525g gold from rock and 3,484g from placer.

The head waters of the Taseko creek basin has three areas of interest which are silicified with sulphidic altered tuff and porphyry intrusions over a strike length of 2,600 meters.

The Mad Major showing is of interest as part of a potential copper-moly porphyry system.



June '86
www.