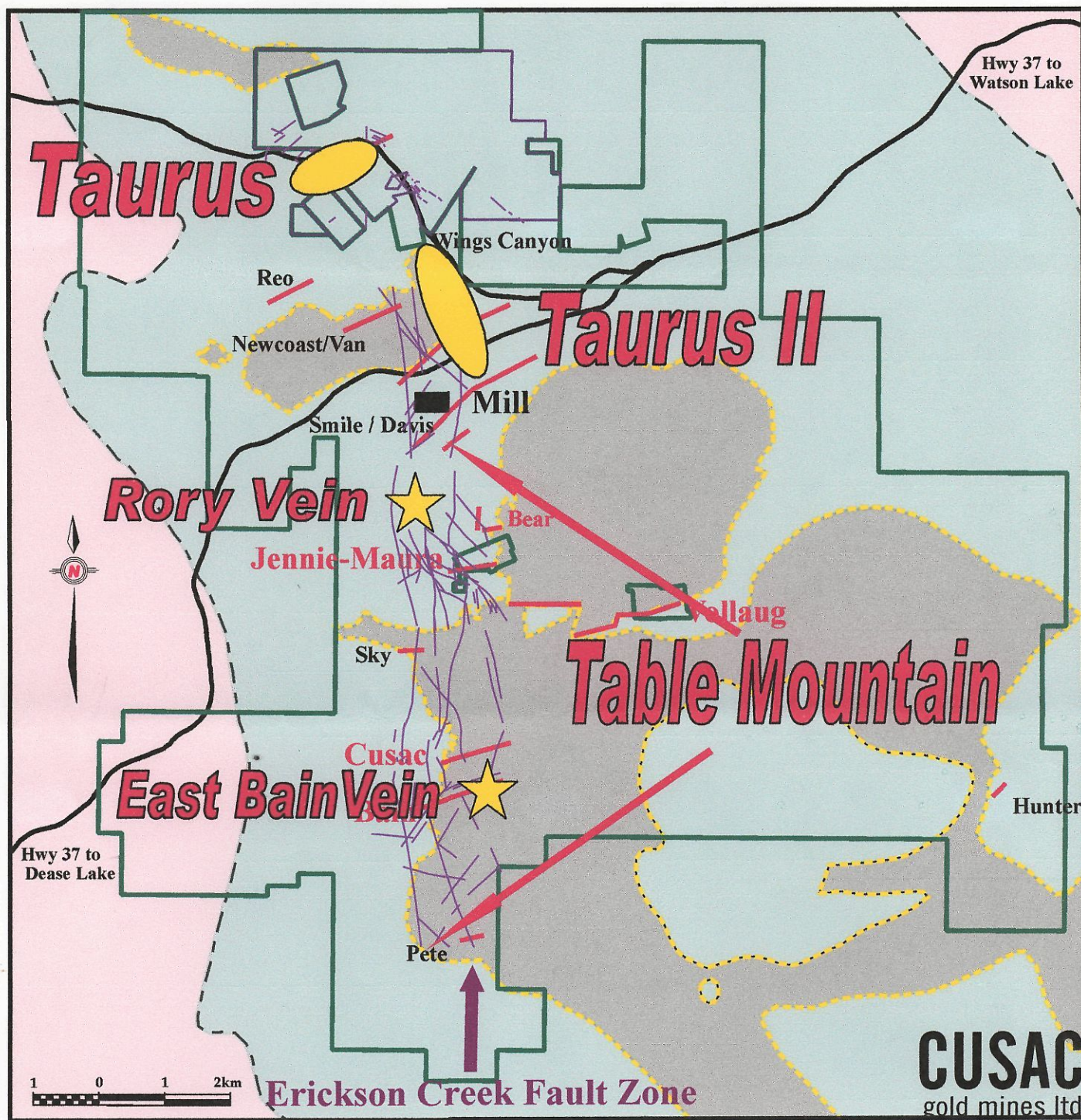


TABLE MOUNTAIN GOLD MINE RE-OPENING CEREMONIES**Date:** Friday, December 15, 2006**Notes By:** Tom Schroeter**Location:** Near Cassiar, B. C., Hwy 37 (south of Watson Lake).**Access:** Charter aircraft from Vancouver, via Smithers [return].**Participants:** Guil Brett, David Brett (President), Lea Brett, George Saunders, Mandy Yip, Rav Mlait [Cusac Gold Mines], plus on-site hosts: Lesley Hunt (VP-Exploration), Mike Glover (Mine Geologist), David Seers (Exploration Geologist), Kevin Fitzpatrick (Mine Manager) and Colin Kraft (Mill Manager/Assayer).

Peter Kennedy (Northern Miner), Paul Dickson (ResourceWorld Magazine), Leonard Melman (Freelance Mining Writer), Lester (Business BC-TV), Tom Schroeter (BCMEMP), Steve Eisenberg (Broker, Toronto), Jim Elbert (Broker, Victoria), Gilbert Chan (NAT Interactive Ltd. [Chinese Brokerage]).

- **Capital Cost** (to re-open): **\$3.75M** (Cusac raised \$5.7M in Mar. '06 for mine + exploration on Taurus 11 project). Projected cash operating costs: \$256/oz Au
- **Mill re-started** (officially) on Dec. 14, 2006 (rated at 300 tons per day, but will operate at much less e.g. 50-100 tpd). On-site employment: 15
- **Past Gold Production:** a) Cassiar Camp (totals) - 423,000 oz gold  
b) Table Mountain Mine - 315,000 oz gold
- **Current Resources** (43-101): Probable - ~44,000 tons grading 0.49 ounces per ton gold [ Rory Vein: ~ 16,000t @ 0.46 opt Au = 7000 oz; East Bain Vein: ~ 14,000 oz Au] = total of **21,000 oz gold**, plus (non 43-101) resource of **33,700 oz gold** in ~ 47,500 tons of 'ore'.
- Plan to produce **25,000 oz gold in 2007**, initially from the **Rory Vein** (Main area), followed by the **East Bain Vein** (Cusac area).
- New portal/adit access for **Rory Vein** at 1400 Level (approx. 1600 feet horizontal; then 350 feet inclined).
- Face of underground workings on Dec. 15, 2006 returned assay of 24.24 opt Au [CONFIDENTIAL]
- Gold recoveries in the mill are expected to be 40% and 60% by **gravity** separation and **flotation**, respectively.
- All **diesel power** generation (i.e. relatively expensive). Camp facilities leased at **Cassiar**.

Dec. 15/06







Rory  
 16,000 t @ 0.46  
 ~7000 oz total

East Bain 14,000 oz

Totals ~26,000 oz "Indicated"  
 43-101

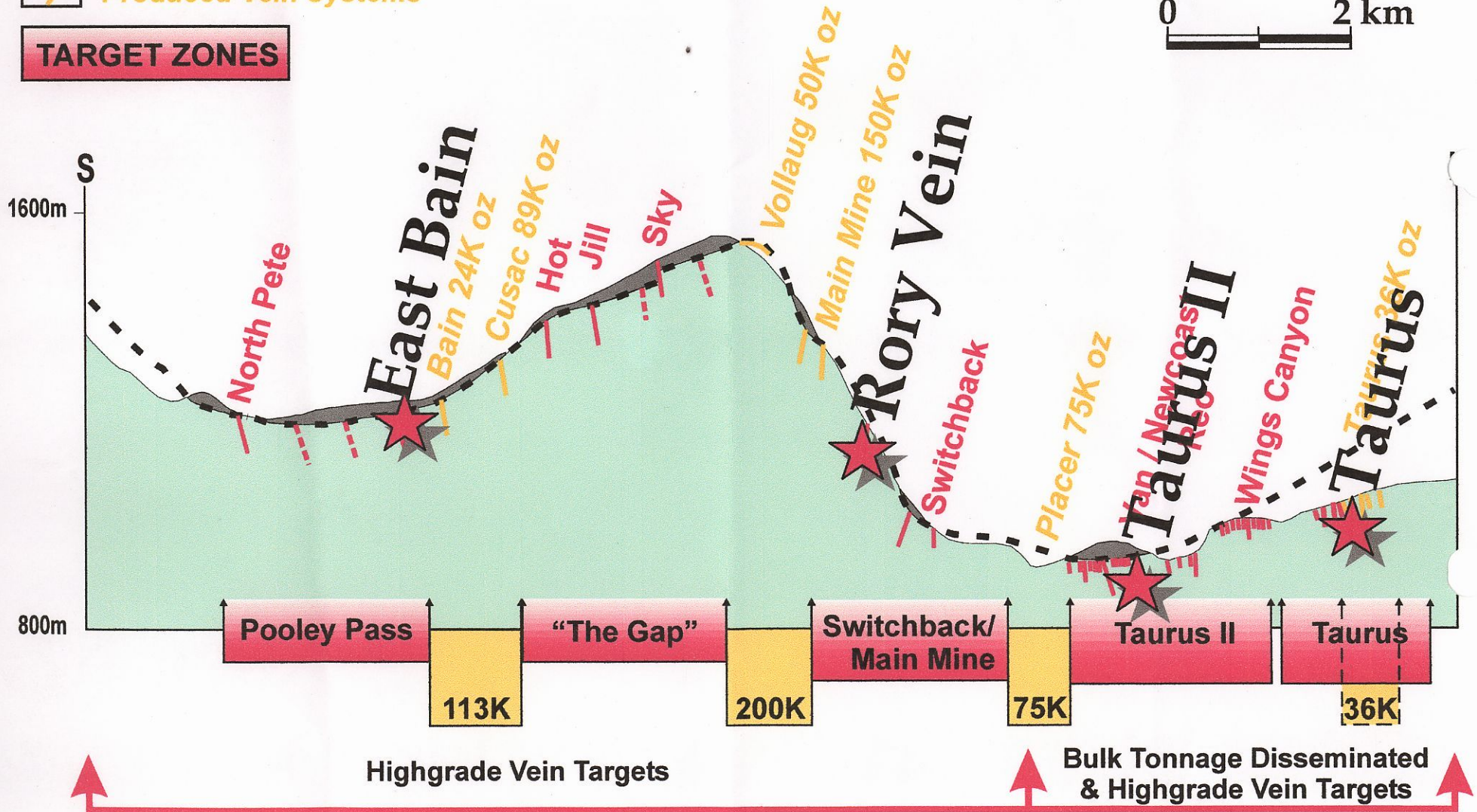


**LEGEND**

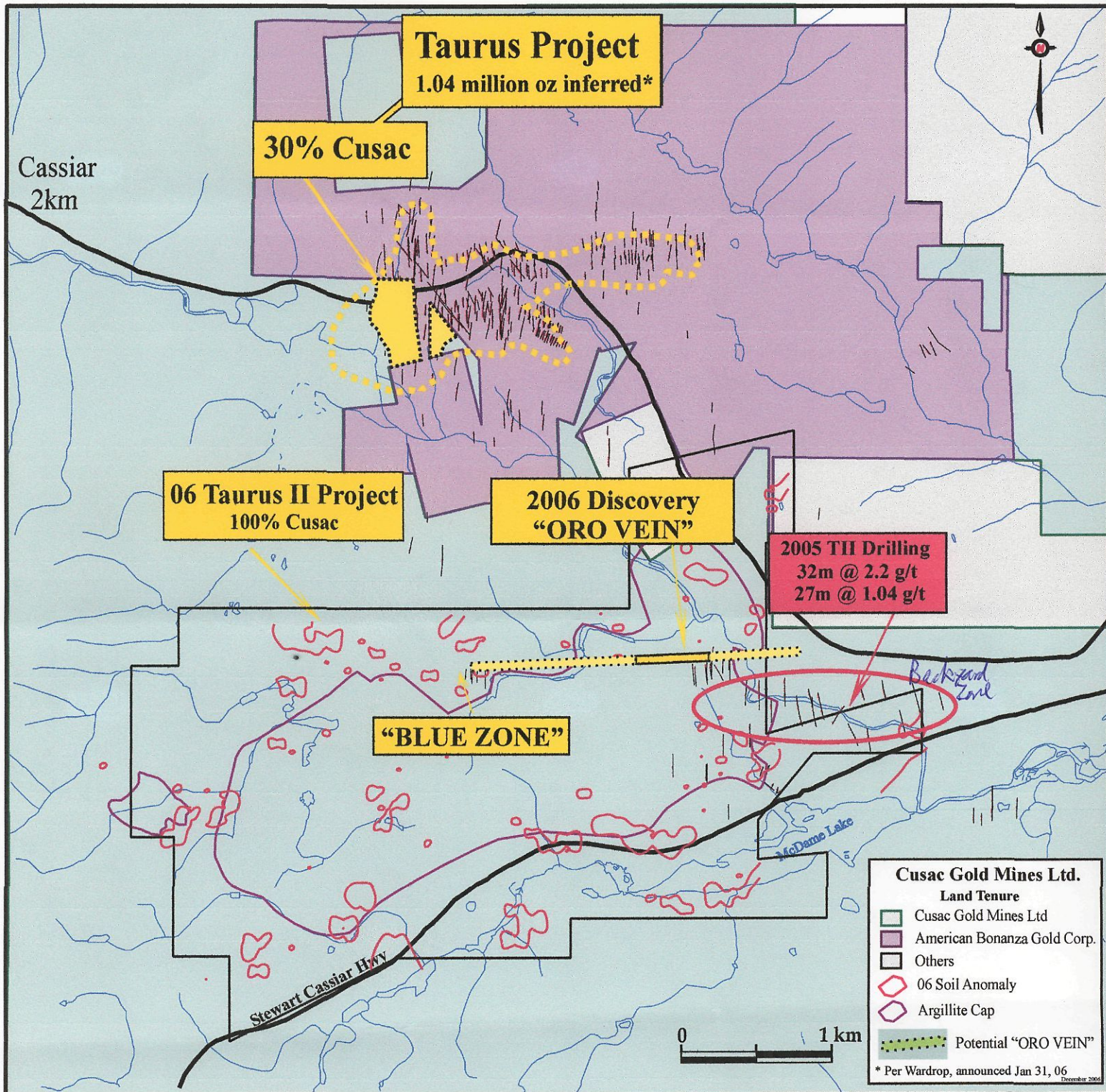
-  Table Mountain Argillites
-  Table Mountain Thrust
-  Table Mountain Volcanics
-  Produced Vein Systems

**TARGET ZONES**

**Cusac Gold Mines Ltd.  
Table Mountain Gold Property  
Schematic Longitudinal Section  
(Looking West)**





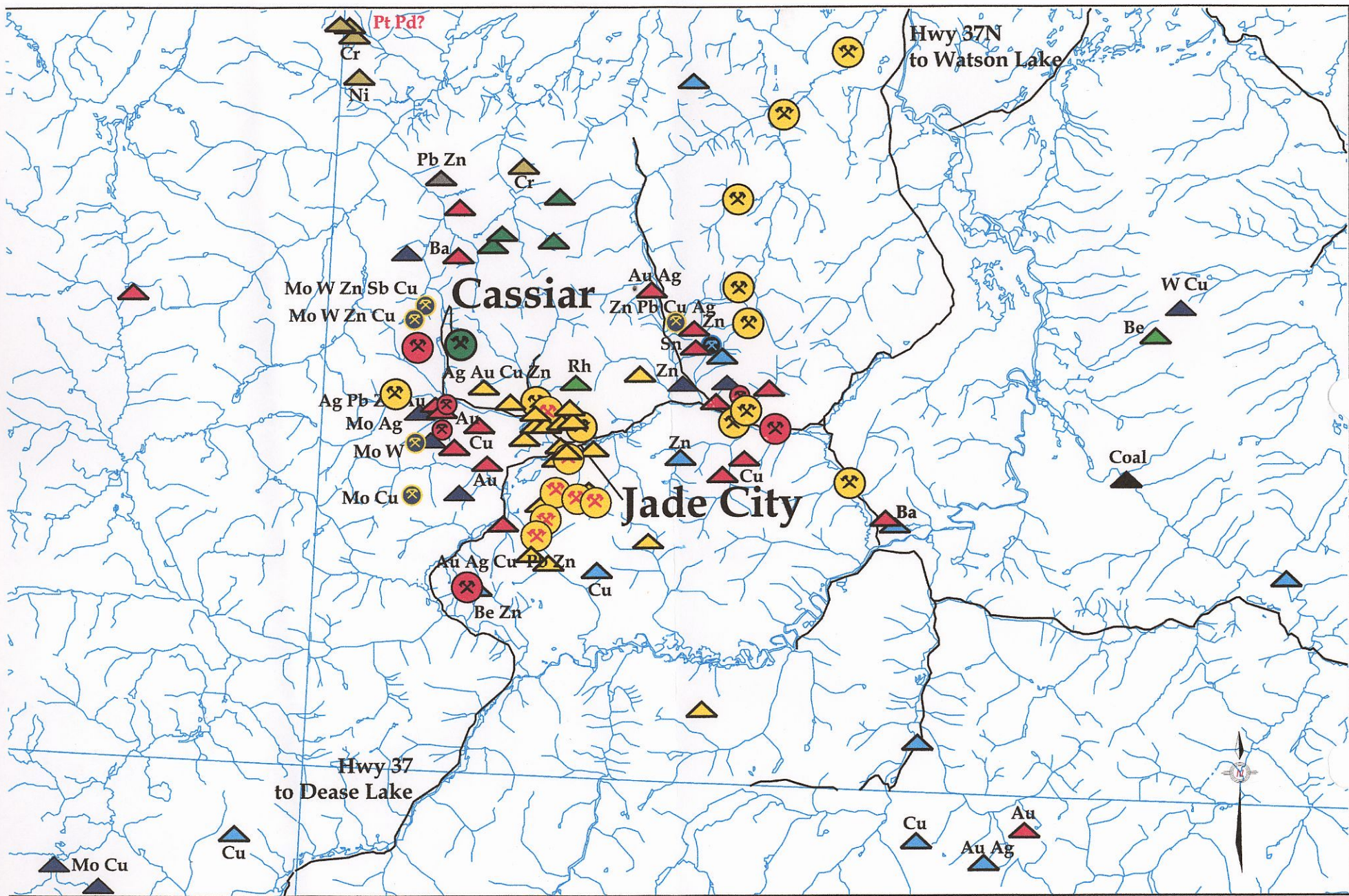


Dec. 15/06  
Mike Visit

Oro Vein

Blue zone geol. "similar to Taurus"





- ▲ Ag+Base Metals
- ▲ Au +/- Ag
- ▲ Cu Pb Zn
- ▲ Mo +/- W Cu
- ▲ Be Rh Gemstones
- ▲ Asbestos
- ▲ Ni+Pt Pd
- ▲ Coal

- ⊗ Gold Placer
- ⊗ Past Producer
- ⊗ Developed Prospect
- △ Showing/Prospect



**Cassiar Regional Metallogenic Occurances**



## Table Mountain Tour, December 15<sup>th</sup> 2006 Schedule

Time		Group A	Group B	Location
9:30		Arrive and Mob to Cassiar Settle-in/Coffee Etc. Presentation Drive to Minesite		Cassiar Camp
	10:30			
10:30	11:00			
11:00	11:30	Mill Tour	Geology	Mill / Mine Office & Core Shack
11:30	12:00	Geology	Mill Tour	
12:00		Lunch		Mine Office
	1:00			
1:00	1:30	Gold Pour	14 Portal	Assay Lab / 14 Portal
1:30	2:00	14 Portal	Gold Pour	
2:00	2:30	Meet at Mine Office		Mine Office
2:30	3:00	Mob to Airstrip		

Group A
Lesley Hunt
David Brett
Peter Kennedy
Steve Eisenberg
Mrs. Eisenberg
Leonard Melman
Paul Dickson
Brian Anderson
Kevin Carlick

Group B
Mike Glover
George Sanders
Tom Schroeter
Gilbert Chan
Jim Elbert
Mandy Yip
Lea Brett
Rav Mlait
Guil Brett

→ Table  
Mtn.

**Schroeter, Tom EMPR:EX**

---

**From:** Schroeter, Tom EMPR:EX  
**Sent:** Mon, December 18, 2006 6:58 AM  
**To:** Wojdak, Paul EMPR:EX; Lefebure, Dave EMPR:EX  
**Subject:** FW: Cusac Starts Gold Production at Table Mountain

FYI. I will be emailing you both a separate report with photos on my visit last Friday.

**Tom**

Tom Schroeter, P.Eng./P.Geo.  
Senior Regional Geologist  
Geological Survey Branch  
Mining and Minerals Division  
Ministry of Energy, Mines and Petroleum Resources

Direct Telephone 604 660-2812  
Messages & Enquiries 604 660-2708  
Facsimile 604 775-0313  
email tom.schroeter@gov.bc.ca

---

**From:** Cusac Gold Mines Ltd. [mailto:Cusac\_Gold\_Mines\_Ltd.@mail.vresp.com]  
**Sent:** Mon, December 18, 2006 5:02 AM  
**To:** Schroeter, Tom EMPR:EX  
**Subject:** Cusac Starts Gold Production at Table Mountain



For Immediate Release / TSX: CQC OTCBB: CUSIF

December 18, 2006

**Cusac Starts Gold Production at Table Mountain**

Vancouver, BC, December 18, 2006. David H. Brett, President, Cusac Gold Mines Ltd. (TSX: CQC. OTCBB: CUSIF, the "Company"), reports that the Company has commenced gold production at its 100% owned and operated Table Mountain Gold Mine in northern British Columbia. Milling of ore from the Rory Vein commenced December 14, 2006. As part of a December 15th tour of the property by media, investors, government officials, and company executives the Company poured a

series of commemorative gold wafers bearing the Company's logo. December production is expected to be modest, with production accelerating significantly during the first quarter of 2007. The mine tour and gold pour was captured by BTV Business Television as part of a corporate video presentation that will be broadcast and made available on the Company's web site in the New Year.

"Table Mountain is the only mine in British Columbia to start production in 2006," said Cusac CEO David Brett. "I am very proud of our hard working Cusac team, whose experience and professionalism has been critical to achieving this important milestone for the Company."

Cusac Gold Mines Ltd. is a gold mining and exploration company in existence since 1966. Cusac has a dominant land position in the Cassiar Gold Camp of northern BC, and is producing gold from high-grade quartz veins on Table Mountain. Cusac also owns over 30% of the low-grade, bulk tonnage, million-ounce resource at the Taurus deposit, and is exploring for more bulk-tonnage, disseminated gold mineralization nearby at its 100% owned Taurus II project. Please visit our website [www.cusac.com](http://www.cusac.com) for more details.

On behalf of the Board of Directors:

"DAVID H. BRETT"

---

CEO & Director,  
Cusac Gold Mines Ltd.

---

For Further Information Please Call:

1-800-670-6570 (Canada)

or 1-800-665-5101 (USA)

604-682-2421 (Local)

Email: [info@cusac.com](mailto:info@cusac.com)

Web: <http://www.cusac.com>

Stock Quotation:

CUSIF : OTCBB

CQC : Toronto Stock Exchange

The TSX has not reviewed and does not accept responsibility for the adequacy or accuracy of this release.

#### **About Cusac Gold Mines Ltd.:**



Cusac Gold Mines Ltd. is a gold mining and exploration company in existence since 1966. Cusac has a dominant land position in the Cassiar Gold Camp of northern BC, and is producing gold from high-grade quartz veins on Table Mountain. Cusac also owns over 30% of the low-grade, bulk tonnage, million-ounce resource at the Taurus deposit, and is exploring for more bulk-tonnage, disseminated gold mineralization

*www.cusac.com*



**Schroeter, Tom EMPR:EX**

---

**From:** Rav Mlait [rmlait@cusac.com]  
**Sent:** Mon, December 11, 2006 12:37 PM  
**To:** Schroeter, Tom EMPR:EX  
**Subject:** Cusac Gold Pour - Times, Directions and Details  
**Importance:** High  
**Attachments:** Million Air Directions1.xls

Dear Tom,

We would like to have you attend the Cusac Gold Mines **re-opening ceremony & mine tour of the Table Mountain Gold Mine** on Friday, December 15th. Please let us know as soon as possible if you can attend. Details below.

**Departure:**

Departure time is 6:00 AM on Friday, December 15th. **You must be at the "Million Air Centre" at 5:30 AM.** Directions to the Millions Air Centre are attached to this email. Please review and print out. Parking is available at this location.

**Friday, December 15 - Cusac Mine Site Visit- Full Day Trip**

- 6AM, depart Vancouver (Cusac has arranged a charter plane)
- 9AM, arrive Cassiar air strip
- Reception/Coffee at Cassiar, Short Corporate Presentation, Tour of Infrastructure & Property, Lunch, Drill Core review, Gold Pour Ceremony, Depart.
- 3:30PM, depart Cassiar
- 6:30 PM, arrive Vancouver

**Clothing for trip**

It is important that you dress for very cold winter conditions. We suggest boots, thick jackets, gloves, touques, and double socks.

Regards,

Rav Mlait  
Investor Relations  
Cusac Gold Mines Ltd. ([www.cusac.com](http://www.cusac.com))  
604.682.2421  
Toll Free Can: 1.800.670.6570  
Toll Free USA:1.800.665.5101  
OTCBB: CUSIF  
TSX: CQC

CONFIDENTIALITY: "The information transmitted is intended only for the person or entity to which it is addressed and may contain confidential or privileged material. Any review, retransmission, dissemination, posting on internet message boards or other use of, or taking of any action in reliance upon, this information by persons or entities other than the intended recipient is prohibited. If you received this message in error, please contact the sender and delete the material from all computers."



## Schroeter, Tom EMPR:EX

---

**From:** Schroeter, Tom EMPR:EX  
**Sent:** Fri, December 8, 2006 5:33 PM  
**To:** Lefebure, Dave EMPR:EX  
**Subject:** Re: Cusac Gold Mine

Fine - I. Not aware of anyone else.

----- Original Message -----  
From: Lefebure, Dave EMPR:EX  
To: Schroeter, Tom EMPR:EX  
Cc: Partridge, Eric J EMPR:EX  
Sent: Thu Dec 07 21:29:08 2006  
Subject: RE: Cusac Gold Mine

Tom:

I understand your desire to get to Cusac. Unfortunately I can't commit yet to host the Mizuho Bank meeting yet - we can talk early next week.

We also need to findout plans of other Ministry staff to attend the event.

Dave

-----Original Message-----  
From: Schroeter, Tom EMPR:EX  
Sent: Thu, December 7, 2006 2:42 PM  
To: Lefebure, Dave EMPR:EX  
Subject: Fw: Cusac Gold Mine

Dave, I talked to Gil and he would very much like to have me join the 1-day trip next Friday 15th. I know we have the meeting with Mizuho Bank next Friday . At this point in time, I believe this is a 'social' meeting to meet the new (Toronto) head of the bank. As such, and considering my mandate (dilema) to document and report on mine re-openings, I feel I should attend the Table Mountain re-opening. Paul, the others in the Smithers office, and I have been having a hard time assessing whether to call Table Mtn a mine re-opening, or a prject in the re-development phase, moving towards mine re-opening in early 2007. The best way to determine this would to be on site I.e. participate in the. Tour. What do you think? Could you :andle the Mizuho meeting?

----- Original Message -----  
From: Man, Eric EMPR:EX  
To: Schroeter, Tom EMPR:EX  
Sent: Thu Dec 07 13:05:14 2006  
Subject: Cusac Gold Mine

Hi Tom,

Mr. Guildford Brett from Cusac Gold Mine Ltd. wanted me to let you know that he would like somone from the province (preferbly you) to visit the opening of their mine next week on the 15th of December. There will be a plane from Vancouver to Cassiar and it would be a one day trip.

Mr Brett's phone number is 604-682-2421

Thanks

Eric Man  
Geological Assistant  
BC Geological Survey  
Ministry of Energy, Mines and Petroleum Resources 300 - 865 Hornby Street Vancouver, BC  
V6Z 2G3  
604-660-2708



## Schroeter, Tom EMPR:EX

---

**From:** Schroeter, Tom EMPR:EX  
**Sent:** Mon, December 11, 2006 7:58 AM  
**To:** Lefebure, Dave EMPR:EX  
**Subject:** RE: Cusac Gold Mine

Yes, I was aware of this, but was told that his schedule wouldn't allow him to attend. Shall we make the 'call' tomorrow?

Tom  
Tom Schroeter, P.Eng./P.Geo.  
Senior Regional Geologist  
Geological Survey Branch  
Mining and Minerals Division  
Ministry of Energy, Mines and Petroleum Resources

Direct Telephone 604 660-2812  
Messages & Enquiries 604 660-2708  
Facsimile 604 775-0313  
email tom.schroeter@gov.bc.ca

-----Original Message-----  
**From:** Lefebure, Dave EMPR:EX  
**Sent:** Mon, December 11, 2006 7:47 AM  
**To:** Schroeter, Tom EMPR:EX  
**Subject:** Re: Cusac Gold Mine

Minister Bennett has an invitation.

----- Original Message -----  
**From:** Schroeter, Tom EMPR:EX  
**To:** Lefebure, Dave EMPR:EX  
**Sent:** Fri Dec 08 17:32:54 2006  
**Subject:** Re: Cusac Gold Mine

Fine - I. Not aware of anyone else.

----- Original Message -----  
**From:** Lefebure, Dave EMPR:EX  
**To:** Schroeter, Tom EMPR:EX  
**Cc:** Partridge, Eric J EMPR:EX  
**Sent:** Thu Dec 07 21:29:08 2006  
**Subject:** RE: Cusac Gold Mine

Tom:

I understand your desire to get to Cusac. Unfortunately I can't commit yet to host the Mizuho Bank meeting yet - we can talk early next week.

We also need to findout plans of other Ministry staff to attend the event.

Dave

-----Original Message-----  
**From:** Schroeter, Tom EMPR:EX  
**Sent:** Thu, December 7, 2006 2:42 PM  
**To:** Lefebure, Dave EMPR:EX  
**Subject:** Fw: Cusac Gold Mine

Dave, I talked to Gil and he would very much like to have me join the 1-day trip next Friday 15th. I know we have the meeting with Mizuho Bank next Friday . At this point in





## Facsimile Transmittal

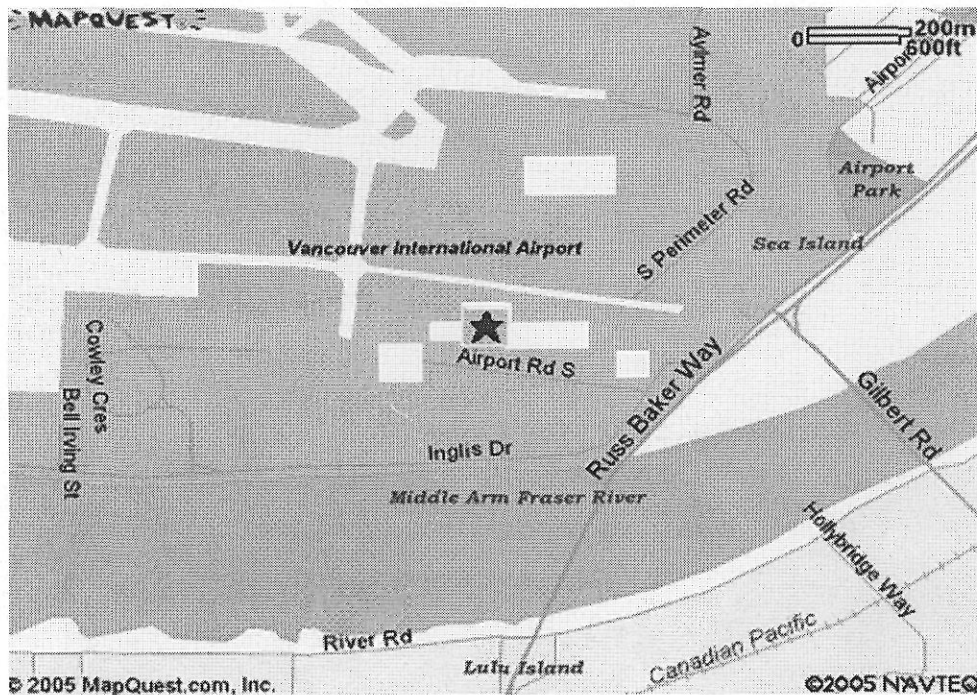
To: \_\_\_\_\_ Fax: \_\_\_\_\_  
From: \_\_\_\_\_ Date: \_\_\_\_\_  
Re: Location of boarding area Pages: 1

Follow all South Terminal signs and turn West off Russ Baker Way.  
Take the first right turn - Airport Road South.  
The first building on your right will be Helijet - continue West.  
The Million Air Centre is the large facility directly beyond Helijet.  
Enter the second entrance on the right to park at the Million Air parking lot.  
Our passenger boarding lobby is located between two Million Air office buildings (green awning).  
A Northern Thunderbird representative will be present to check-in charter passengers thirty minutes prior to departure.

**\*\*Parking fees will apply; a parking pass can be obtained from the dispensers throughout the lot**

**\*\*Parking fees are:** \$1.00 per hour      \$8.50 per day  
\$59.50 per week                      \$35.00 monthly pass

PLEASE SEE THE MAP BELOW - CALL US WITH QUESTIONS! 604-232-9211



THANKS FOR CHOOSING NORTHERN THUNDERBIRD AIR - HAVE A GREAT FLIGHT!

## Schroeter, Tom EMPR:EX

---

**From:** Schroeter, Tom EMPR:EX  
**Sent:** Mon, December 18, 2006 10:56 AM  
**To:** Partridge, Eric J EMPR:EX; Lefebure, Dave EMPR:EX  
**Cc:** Wojdak, Paul EMPR:EX  
**Subject:** FW: Tbl Mtn.

**Attachments:** DSCN0015.JPG; DSCN0017.JPG; DSCN0018.JPG; DSCN0026.JPG; DSCN0027.JPG; DSCN0028.JPG; DSCN0031.JPG; DSCN0033.JPG; DSCN0036.JPG; DSCN0037.JPG; DSCN0039.JPG; DSCN0042.JPG; DSCN0043.JPG; TABLE MOUNTAIN GOLD MINEDec2006.doc; DSCN0011.JPG; DSCN0009.JPG



DSCN0011.JPG  
(898 KB)



DSCN0017.JPG  
(894 KB)



DSCN0009.JPG  
(887 KB)



DSCN0026.JPG  
(982 KB)



DSCN0027.JPG  
(907 KB)



DSCN0028.JPG  
(930 KB)



DSCN0031.JPG  
(872 KB)



DSCN0033.JPG  
(947 KB)



DSCN0036.JPG  
(881 KB)



DSCN0037.JPG  
(900 KB)



DSCN0039.JPG  
(986 KB)



DSCN0042.JPG  
(982 KB)



DSCN0043.JPG  
(921 KB)



TABLE MOUNTAIN  
GOLD MINEDec200..

Gents - another mine (re-) opening in BC in 2006: Table Mountain. Cheers,

Tom  
Tom Schroeter, P.Eng./P.Geol.  
Senior Regional Geologist  
Geological Survey Branch  
Mining and Minerals Division  
Ministry of Energy, Mines and Petroleum Resources

Direct Telephone 604 660-2812  
Messages & Enquiries 604 660-2708  
Facsimile 604 775-0313  
email tom.schroeter@gov.bc.ca

-----Original Message-----

**From:** Man, Eric EMPR:EX  
**Sent:** Mon, December 18, 2006 9:36 AM  
**To:** Schroeter, Tom EMPR:EX  
**Subject:** Tbl Mtn.

The message is ready to be sent with the following file or link attachments:

DSCN0011.JPG  
DSCN0009.JPG

Note: To protect against computer viruses, e-mail programs may prevent sending or receiving certain types of file attachments. Check your e-mail security settings to determine how attachments are handled.