

SCOTTIE GOLD

Thur. Sept. 2/82

Rain overcast

- Roy Wares } surface
- Wilson (Gardner's) }
- David Williams - Mine Geologist

- major fault separates East block from Main Zone (vein)

West Rk. - green ands. fragments

Main portal - 3000 level

- up to 3600 level

- Dependence on South Central fault (w. ore)

grades - very erratic

Strike length (total) ≈ 120 ft.

Sa. No. 30 - grade 2 g/t Au

66° veinlets putting into main vein system.

211 Au - bars

48,000 tons of .74 Au

METRIC

888291

1048074

1048/1E

Mined to date

200 tpd

- Underground mill! @ 2800 Level
- cyanide problem because of pyrrhotite (Inco people)

Simple sulphide mineralogy

- pyrrhotite
- pyrite
- rare Cu , PbS , ZnS
+ arsenopyrite

- pour bricks every 5 or 6 days
value ~ $\frac{1}{4}$ million each.

"Highest cost/ton milling operation"

Dave Visagio
Northpark

Jan. 26/04

- U/B in '04
- Scottie Rd
- Snowfield zone to option

(1)

Tue, Aug 7

- Arrive Stewart
- arrange with Scott's Gold
Minds to 'convoy' to site
at 7 am on the 8th
- Manager - Neil Blayney
- Geologist - Peter Green

- in process of setting up office
& fire-assay lab in bldg
next door to King Edward Hotel

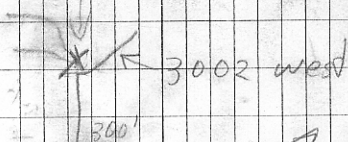
- took 3 photos of inside lab

Aug 8

- with Peter Green

Main Portal - 3000 level

- sample of po from new
raise just at junction
of 3000 2 west drift



8 men
on site

2000' to portal

Climbed up slope to toe of glacier above 3600 level

- many carbonate-qtz veins in green epiclastics (tuffs)

- minor cse agglom. units

- pods + lenses of po + py

- several post-min. amyg. ands. dykes

- stopped in to Big Missouri - Harlan Meade

took 2 sample of old con. from under mill ^{Riverside mine}

Ketschmar's staying at Premier Camp

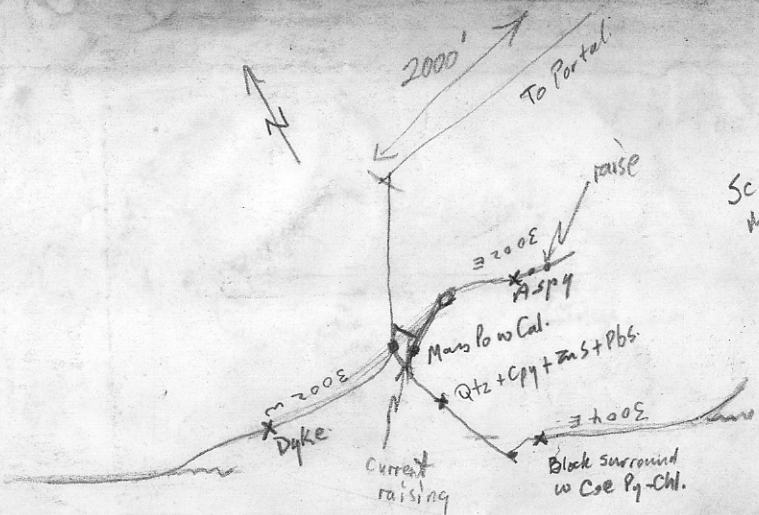
Premier sold to Block Bros.

- Lab Seraphim - consultant }
John Deere } Consortium

Dave Price going up to Tom-McKay Lk. to high grade Tommy's showing (company name - Mae-Ray)

- working at Dunwell now

609 Peter's house + Kitty David Brian



Scottie Gold
 Mine Lfd.
 Aug 8/79
 Red Carpet
 Gold Plated Tour.
 3000 level