

888160

YOS -> SULLIVAN DEEPS



MARINER VENTURES CORP.

Subscribe to Sullivan Deeps Email List:

What's New

Wed Apr 30, 2003 : Best Practices at the Drill Site : Overview ([more...](#))

Mon Apr 28, 2003 : Presentations : Kimberley City Council Presentation ([more...](#))

Thu Apr 10, 2003 : Teck Cominco MOU : Teck Cominco MOU Agreement Signed ([more...](#))

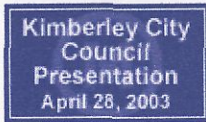
DRILLING THE SULLIVAN DEEPS TARGET

The Sullivan mine, located near Kimberley B.C., was a prolific producer of metals for almost 100 years. Closed in 2001, the Sullivan mine contributed significantly to the development of the City of Kimberley, the Kootenay region, the Province of British Columbia and Canada itself. Impressive in terms of both its size and value to the mining industry, the Sullivan was 'world-class' by every definition of the term.

Mariner Ventures Corp. is a new British Columbia-based exploration company focused on drill-testing for a sister deposit, located an estimated 4 kms north of the Sullivan mine. The geological thesis for another deposit is a compelling one - geological and geophysical information collected by Cominco over the past several years highlights a large 'look-a-like' signature at depth; hence the name "Sullivan Deeps".

Cominco has previously drilled up to six deep holes looking for the target, each of them refining the location of the Sullivan Deeps target. That work provides the basis for establishing the location and depth of the next drill hole, required to appropriately test the now well-defined target. While our proposed exploration drill program is very small in terms of its footprint and disturbance, we hope to deliver a truly legendary discovery as a result of our work.

Mariner recently made a public presentation to the Kimberley City Council where we invited participants to comment on our plan. That presentation can be viewed by clicking on the attached file [KCC Presentation April 28](#).



You are invited to comment to us at info@sullivandeeps.com, or by regular mail to:

Mariner Ventures Corp.
500-1045 Howe Street
Vancouver, BC
V6Z 2A9

Please use the **subscribe to** button above if you would like to be placed on our email list.

[Home](#) | [Presentations](#) | [Teck Cominco MOU](#) | [Best Practices at the Drill Site](#) | [News](#) | [Links](#)



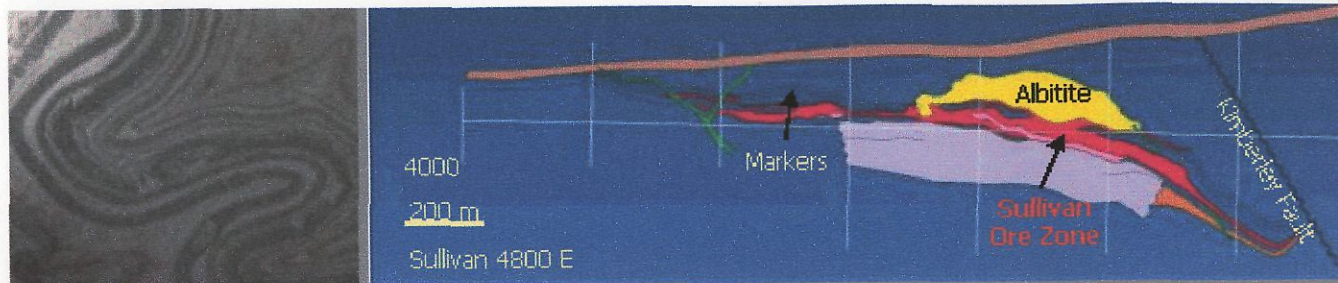
INTRODUCTION



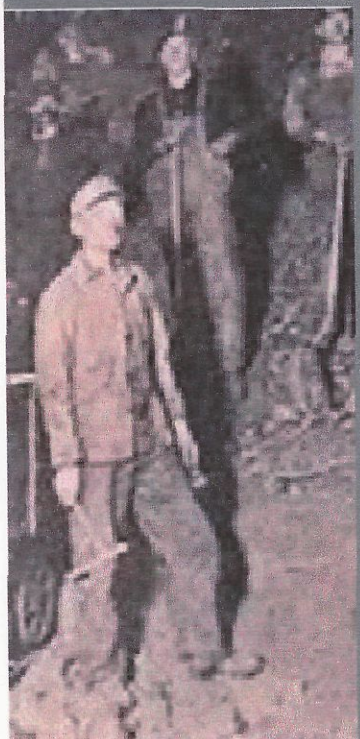
Community Introduction

- Mariner is a new British Columbia-based exploration company founded by experienced engineering, geological and management professionals
- We are known in the industry as efficient and responsible explorers - our investors are keen to support BC-based projects
- We have a strong sense of what makes a good exploration target, and the Sullivan Deeps target is a compelling one for us

click on the screen to start the presentation



INTRODUCTION



Why Are We Here?

- We believe there is great potential for a sister deposit north of the Sullivan Mine
- It has been named "**Sullivan Deeps**" because of the predicted depth
- Mariner wants to test the target by drilling a single deep test hole north of the mine
- While our proposed exploration program very small in terms of its disturbance we hope to deliver a truly legendary discovery

click on the screen to start the presentation



INTRODUCTION

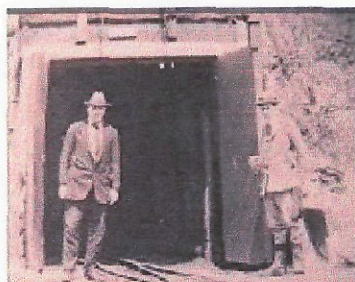


The Sullivan Legacy

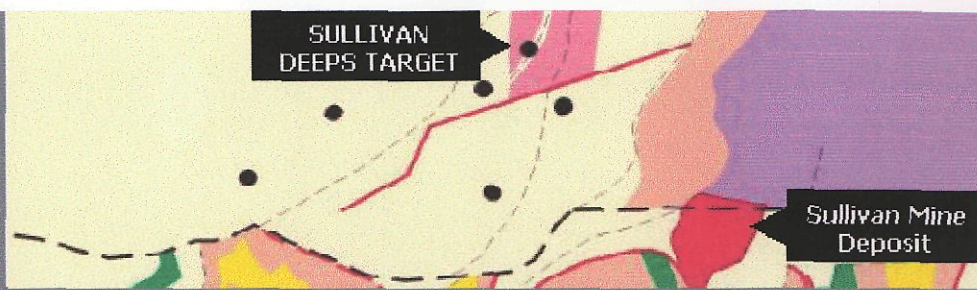
"No other mine, and no other corporation has had a larger influence on BC's development than the Sullivan Mine and Cominco"

Bruce McKnight, 2001 Executive Director
BC & Yukon Chamber of Mines

click on the screen to start the presentation



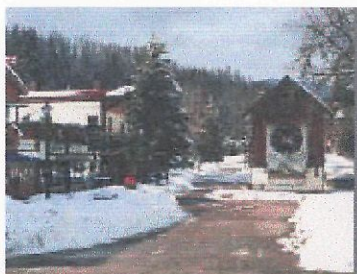
INTRODUCTION



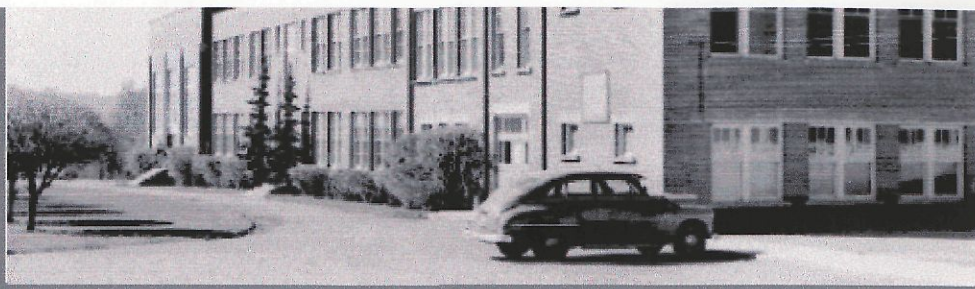
Mariner and Teck Cominco

- Teck Cominco own the mineral rights
- Mariner and Teck Cominco have signed a memorandum-of-understanding that outlines the terms of our exploration agreement
- Mariner will be operator of the exploratio program and will finance all project work in this initial phase of work
- Initial work will include a drill hole that wi be started from a site less than 1km from a previous drill hole finished in 1998

click on the screen to start the presentation



INTRODUCTION

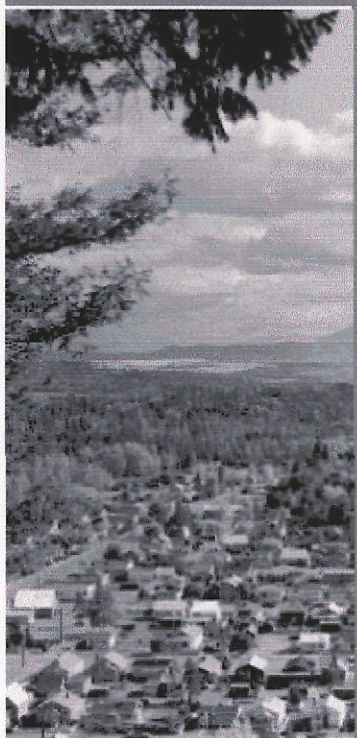


Outline of Presentation

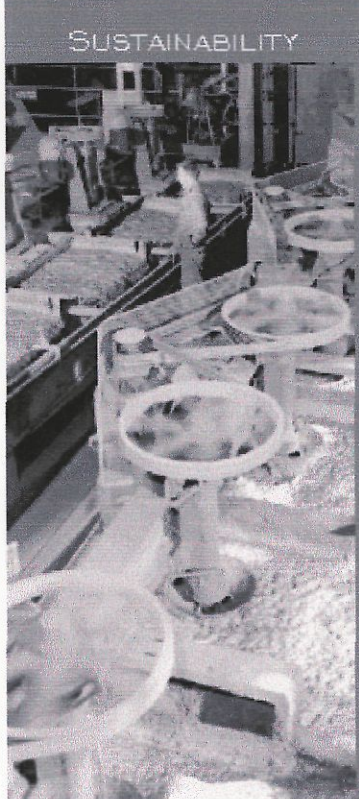
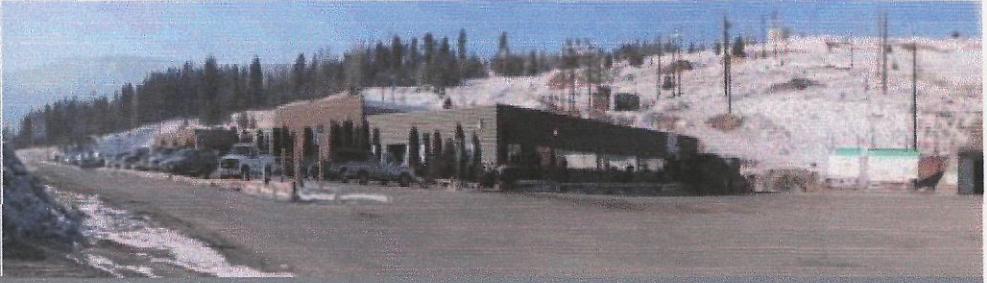
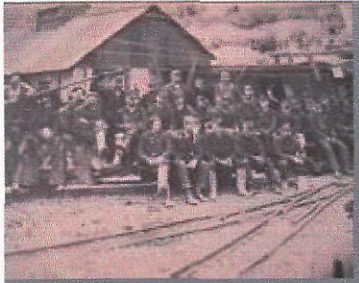
Sustainability – a brief history of the Sullivan Mine and its profound legacy

Exploration – a review of exploration work to date on the Sullivan Deeps target

Mariner's Plan – our proposed exploration program and its implementation



click on the screen to start the presentation



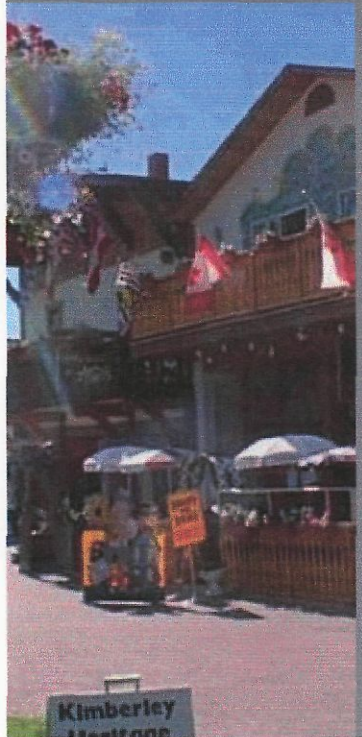
Sullivan Mine History

- Discovered in 1892
- World-class producer of lead and later zinc from 1909 to 2001
- Revolutionary development of differential flotation, now used world-wide in the mineral processing industry
- A 'Nationally significant' mine contributing to British Columbia's and Canada's development
- Legendary in terms of its value and size in the world mining industry

click on the screen to start the presentation



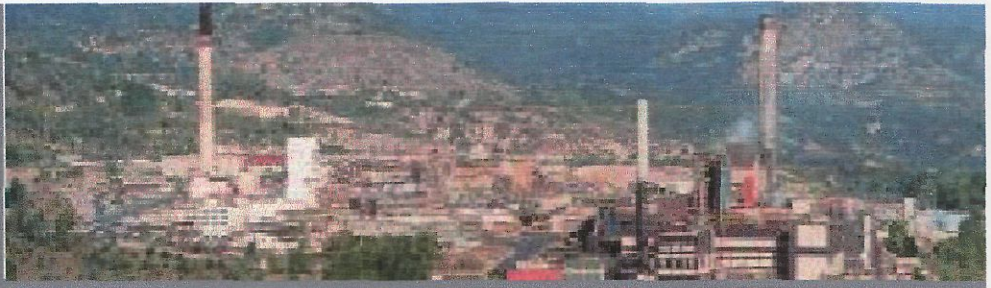
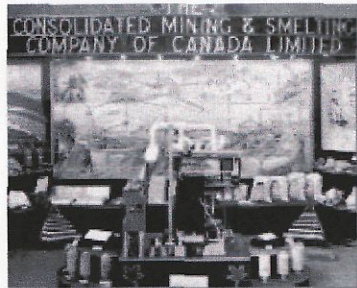
SUSTAINABILITY



Community Builder

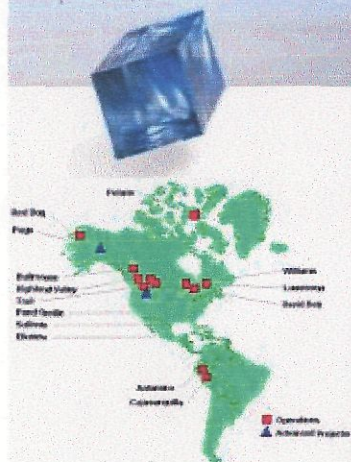
- Kimberley home to four generations of Sullivan workers
- Lifestyle and long-term employment at the mine (average wage \$68,000/yr – 2000)
- Regional infrastructure development including; roads, rail and power
- Schools, cultural venues, health services and sports sites were developed in the community
- Community based spin-offs for goods and services providers

click on the screen to start the presentation



SUSTAINABILITY

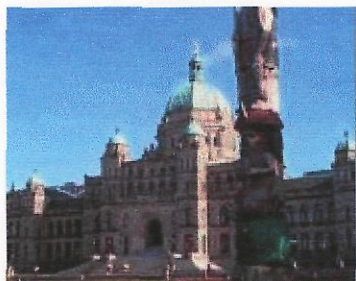
teckcominco



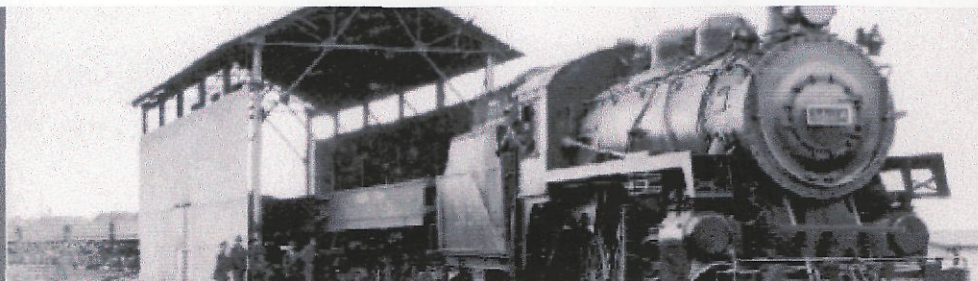
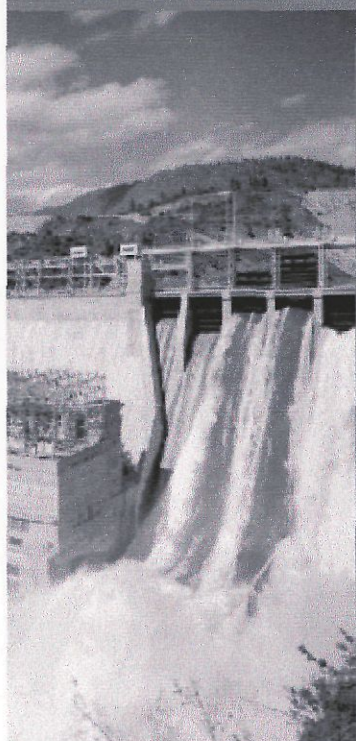
Company Builder

- Sullivan Mine was the world's largest lead producer in the 1920's and a major zinc producer to closure
- Sullivan Mine was the major contributor to the development of other key infrastructure including the Trail smelter
- Cominco became world leader and international producer of lead and zinc
- And therefore, the Sullivan's success can be linked to local, provincial, national and international benefit

click on the screen to start the presentation



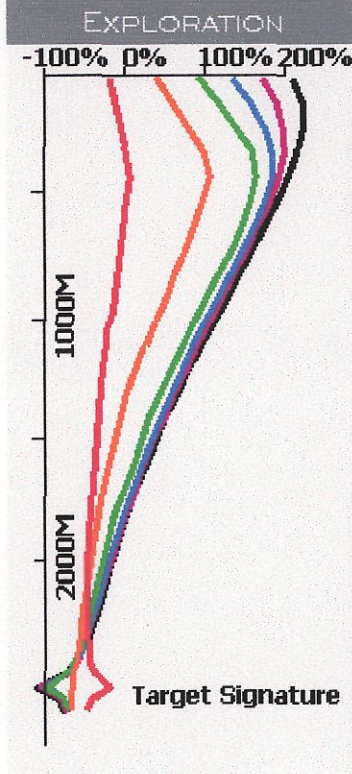
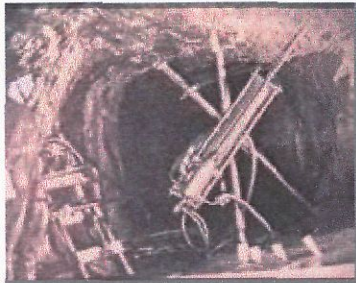
SUSTAINABILITY



Province Builder

- The Sullivan contributed an estimated \$21 Billion in direct benefit to the BC economy
- An estimated \$60 Billion when indirect benefits to British Columbia are included
- Generated the need for and development of power, transmission lines and rail infrastructure in the province
- Has resulted in long-term sustainable benefits from the developed knowledge-base and expertise of BC residents working in the mining industry world wide

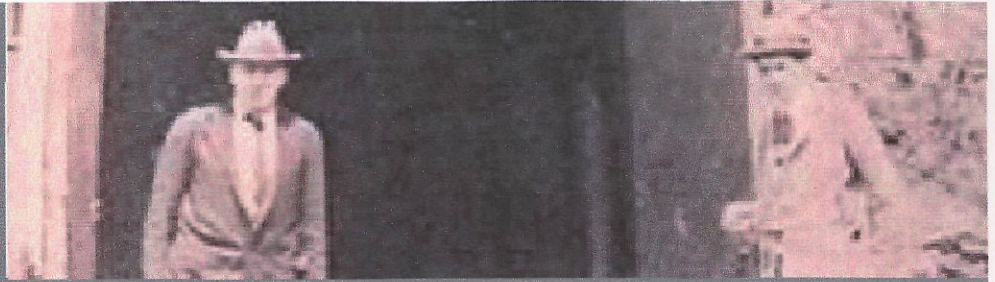
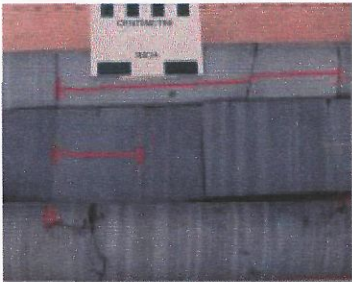
click on the screen to start the presentation



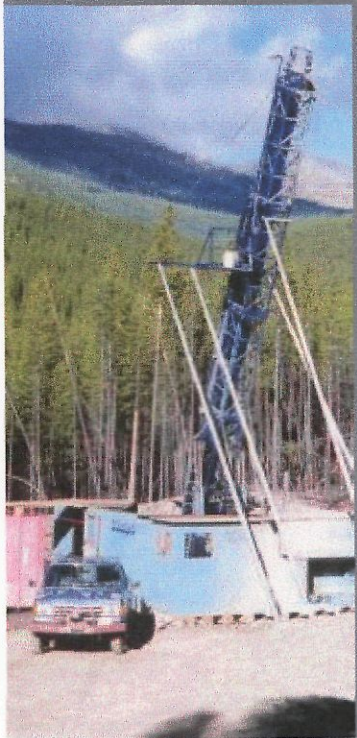
Sullivan Deeps Target

- A distinct, separate and similar target believed to be at depth north of mine
- Cominco has explored for the deep target and developed a geological thesis that supports the presence of a large deposit
- In 1998, Cominco completed down-hole geophysics that demonstrated a compelling target that is a 'look-a-like' a Sullivan signature
- Geophysics and geological models are not exact and need to be confirmed by drilling

click on the screen to start the presentation



EXPLORATION

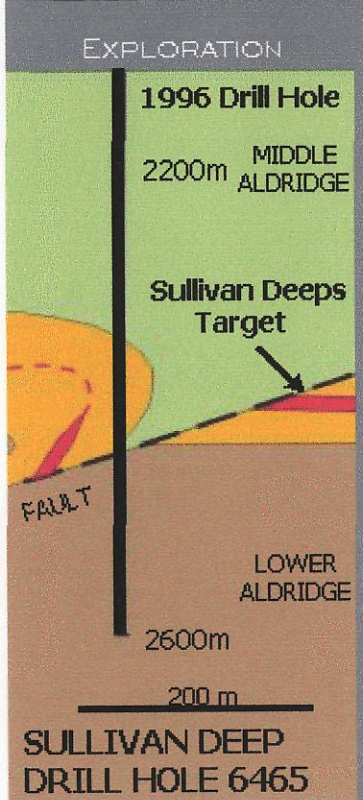
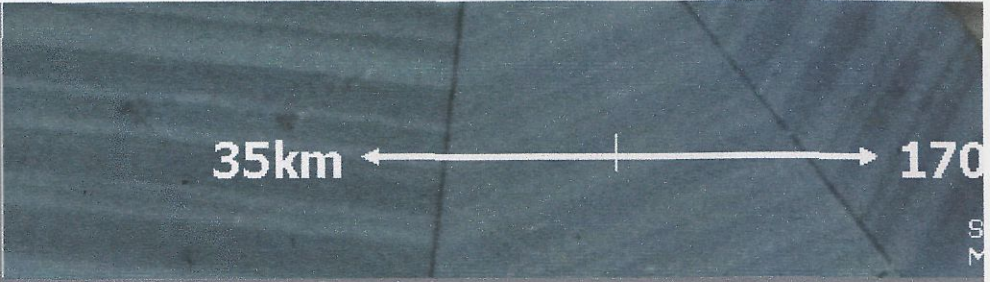


Sullivan Deeps Target (cont'd)

- It is deep - in excess of 2450m (8000 ft) requires an expensive drill hole to confirm the target in the initial exploration phase
- Because of the inherent financial risk of exploration involved, Teck Cominco has agreed to allow Mariner to drill the test h
- **Mariner's** exploration profile is more aggressive, and we are focused on the potential for a world-class discovery by testing Sullivan Deeps

click on the screen to start the presentation

est. ~ \$750k for 1 drill-hole (TGS)

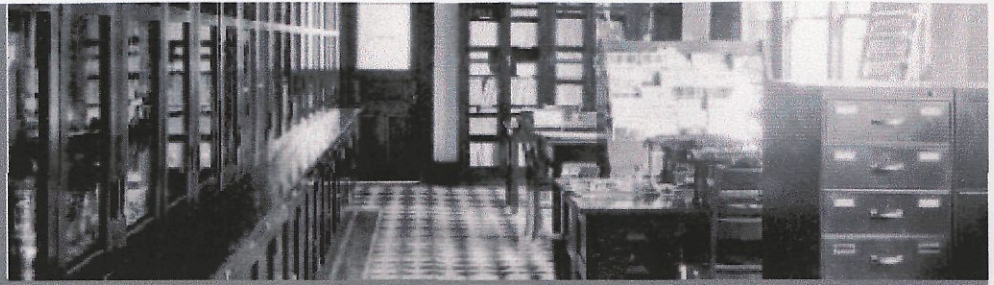


Deep Exploration History

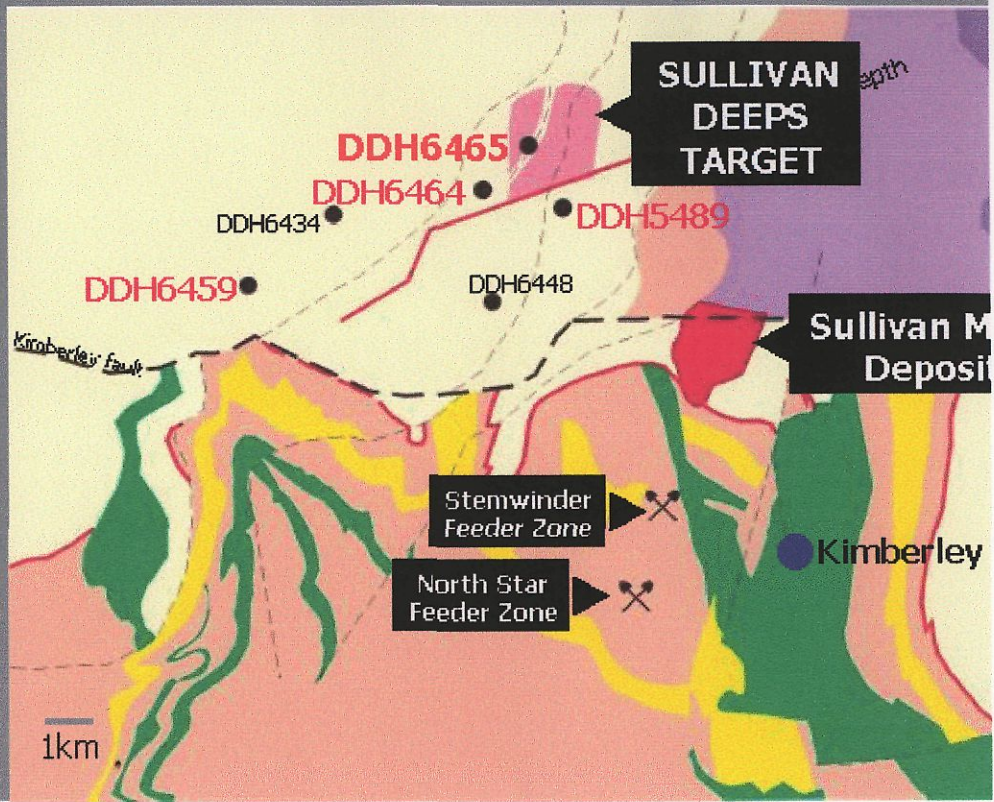
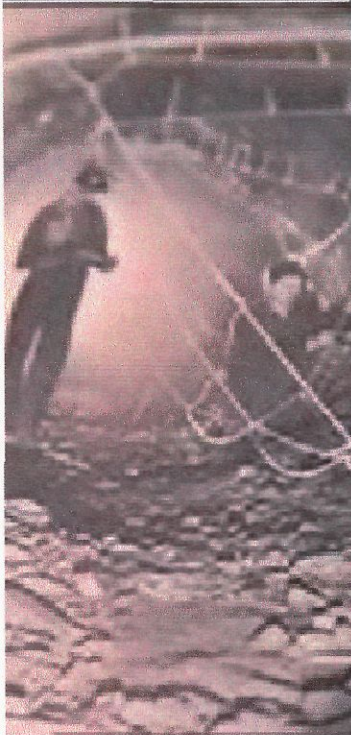
- Teck Cominco drilled at various sites to test the target up to 1998
- Each of those drill holes provided important information for the current geological model and 'deeps' thesis
- Sullivan is a sedimentary-exhalative (SEDEX) deposit with layered 'marker' rocks over the deposit
- **Markers** can be compared to determine distance from, and height above the targ

click on the screen to start the presentation

"one of the best mineralized corridors known in the world"



EXPLORATION



click on the screen to start the presentation

"one of the best mineralized corridors known in the world"



EXPLORATION



Offset Corridor Model



click on the screen to start the presentation

EXPLORATION

DDH6464 DDH6465

SULLIVAN MINE NORTH END

Loop 5

1.5Km X 1.5Km
100 S

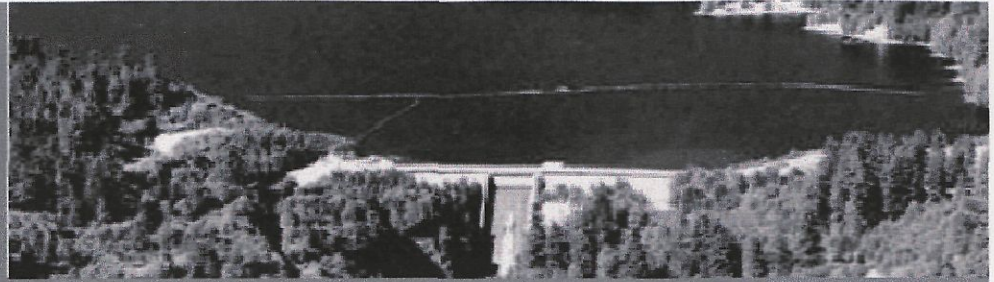
Ryot Faults

Hope Fault

Geology and geophy suggest the last h (DDH6465) drilled through a fault 'win in the target horiz

1 km

click on the screen to start the presentation



MARINER'S PLAN



Mariner's Approach

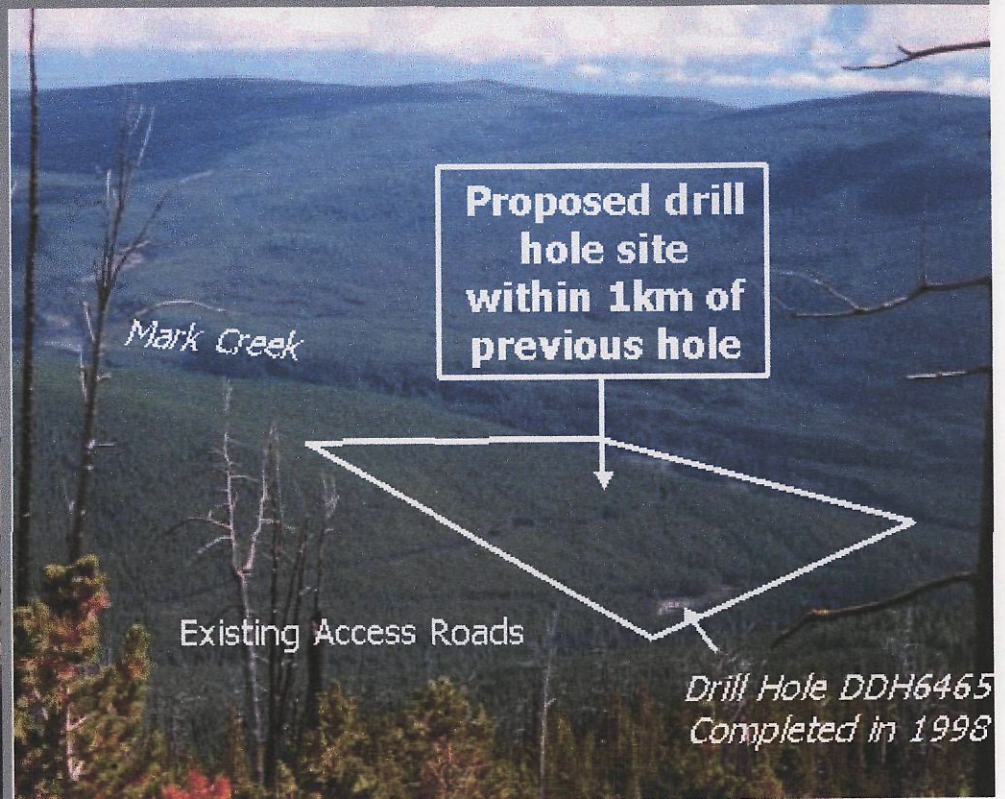
- Use of 'Best Practice' in all aspects of work extended to specialist contractors
- Professional experienced management; a number of previous drilling projects including work at special sites
- Project Manager has 30-years of Sullivan mine and 'Deeps' project site experience
- Detailed environmental protection planning
- Control of drill fluids and fuels as defined in our plan and required by permits and bonding

click on the screen to start the presentation

*30-years of
Sullivan geology,
project and site
experience*

The proposed drill hole site will be accessed from an existing road and less than 1km from the previous drill hole completed in 1998.

MARINER'S PLAN



click on the screen to start the presentation

Paul Ransom



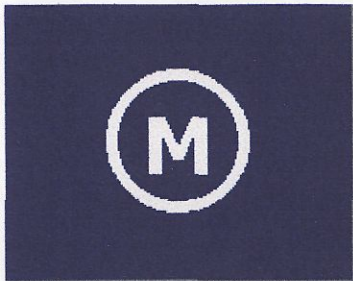
MARINER'S PLAN



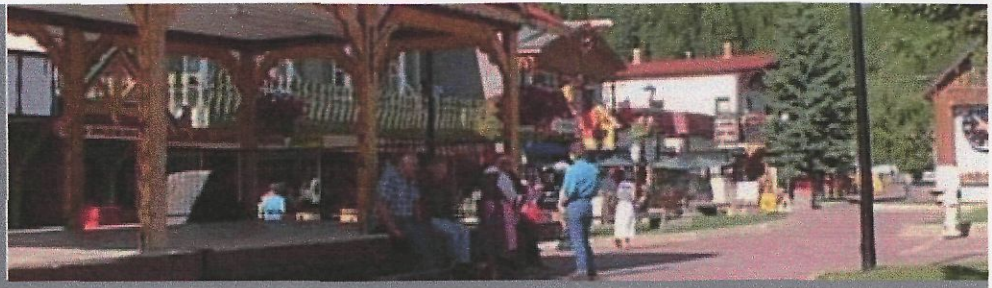
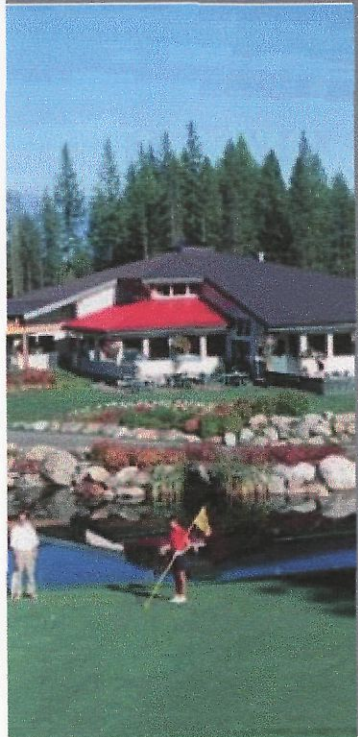
Mariner's Approach

- No new roads needed – will establish our work adjacent to existing access route
- Minimal footprint or disturbance for drill site and laydown area for supplies
- Train all personnel working at site on special operating requirements
- Maintain setbacks from all drainages and creeks per 'best practice' and work plan
- Make use of Cominco's extensive knowledge and experience of the site

click on the screen to start the presentation



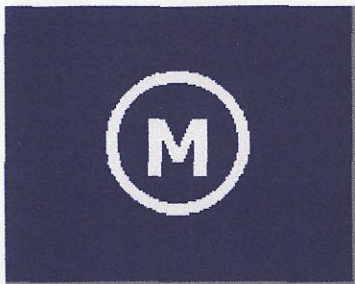
CONCLUSION



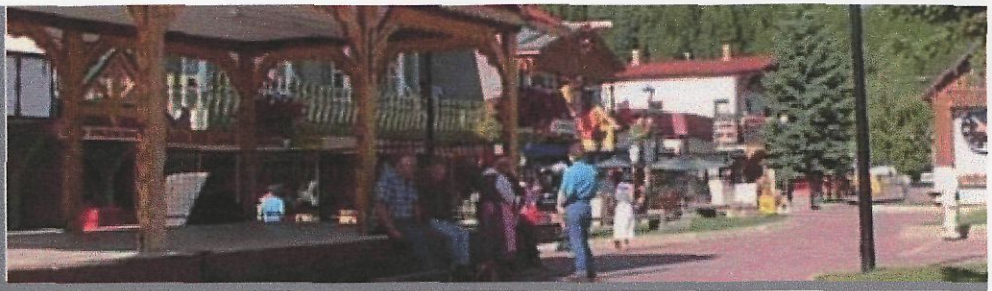
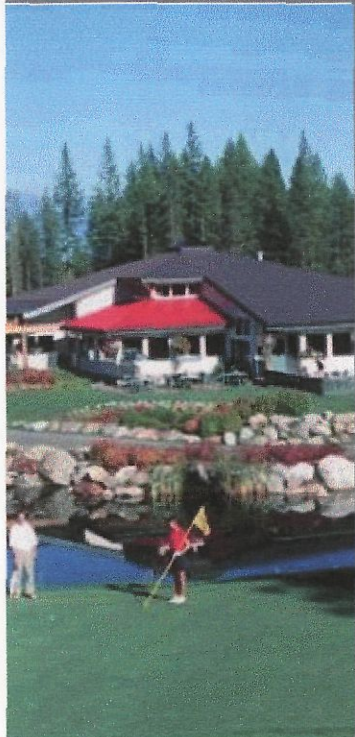
Community I

- Mariner's drill program is limited to exploration only and intended to test the geological thesis for Sullivan Deeps – no mine or other development plans are contemplated at this time
- Our proposed program is significant in terms of its potential to discover a deposit with similar size and value to Sullivan
- Such a new discovery could be readily integrated with Kimberley's tourism, resort and other long-term sustainability goals

click on the screen to start the presentation



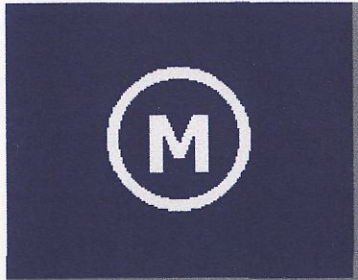
CONCLUSION



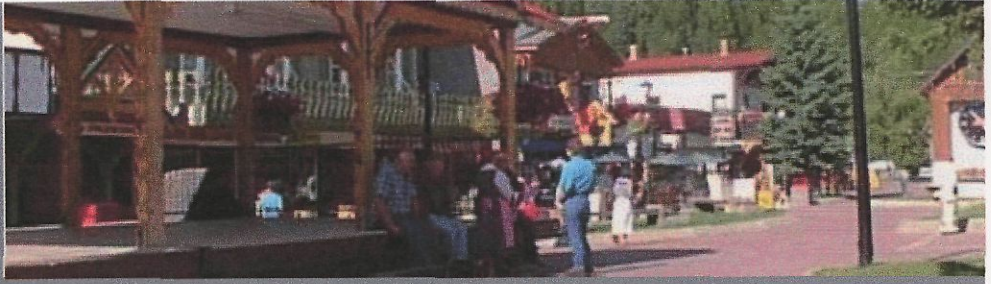
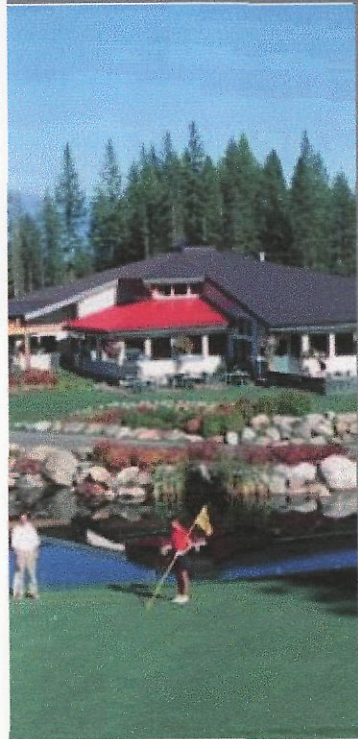
Community II

- Working from existing roads in Upper Mark Creek, our drill-test program will have a very small footprint and area of impact
- Five previous deep holes have been drilled in the area with no detrimental effect
- Mariner hopes to meet with the Mark Creek Advisory Board to discuss the requirements for our work, including; site selection, access, operating requirements, waste handling and other issues

click on the screen to start the presentation



CONCLUSION



Community III

- We have a strong sense of Kimberley's history and relationship with the Sullivan Mine, and we would be very pleased to have your input to our proposed project
- A copy of this presentation is available for your review on the web at:

www.sullivandeeps.com

click on the screen to start the presentation



Photos Courtesy of;

BC Archives - www.bcarchives.gov.bc.ca

Teck Cominco - www.teckcominco.com

BC & Yukon Chamber of Mines - www.chamberofmines.bc.ca

Kimberley BC.net - www.kimberleybc.net

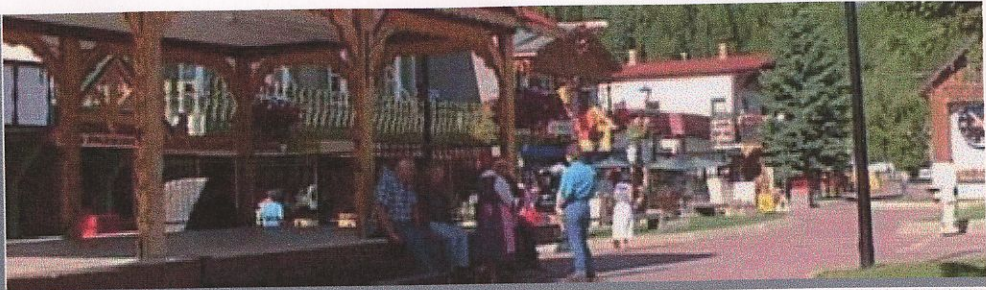
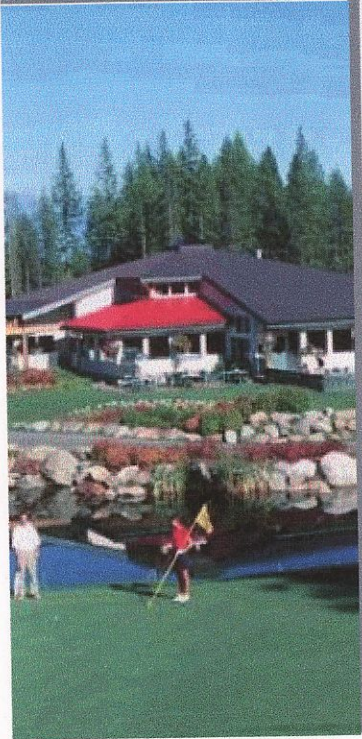
Kimberley Vacations - www.kimberleyreservations.com

All other graphics courtesy of Teck Cominco Limited

click on the screen to start the presentation



CONCLUSION



Contact Info

- You are invited to comment by email to;
info@sullivandeeps.com
- Or by mail to;
Mariner Ventures Corp.
500-1045 Howe Street
Vancouver, BC
V6Z 2A9

click on the screen to start the presentation