

Page 2

of Doreen, approximately 35 km north of Terrace, but found the area too overgrown to land.

The HUB and CU properties were looked for near the headwaters of Legate and Frisco Creeks, located approximately 40 km NE of Terrace. High-grade chalcopryrite-malachite showings in volcanic rocks were observed on a steep hillside on Legate Creek (see photos).

Tanglechain - Ralph Dieter

On August 4th I visited Ralph Dieter's Tanglechain property located approximately 45 km northeast of Smithers. Chalcopryrite, galena, sphalerite and minor barite occur in a carbonatized shear zone(s) up to 1.2 m in width within Hazelton volcanic rocks. Silver values average 1 to 2 oz./ton.

Spur - Inco

On August 5th I visited Inco's SPUR property located approximately 145 km north of Smithers on Tsaytut Spur at the southwest end of Bear Lake. Marc Gidluck, geologist in charge, toured me on the property. The property is underlain by a sequence of easterly dipping Takla Group (?) volcanic units (intercalated basalt-andesite and volcanoclastics). Mineralization occurs mainly within or near a contact zone of a basic lava flow and a volcanoclastic series of units and consists of chalcocite, bornite, chalcopryrite, and malachite-azurite in fracture fillings, irregular vein systems and possibly along bedding planes. Mineralization further appears to be controlled

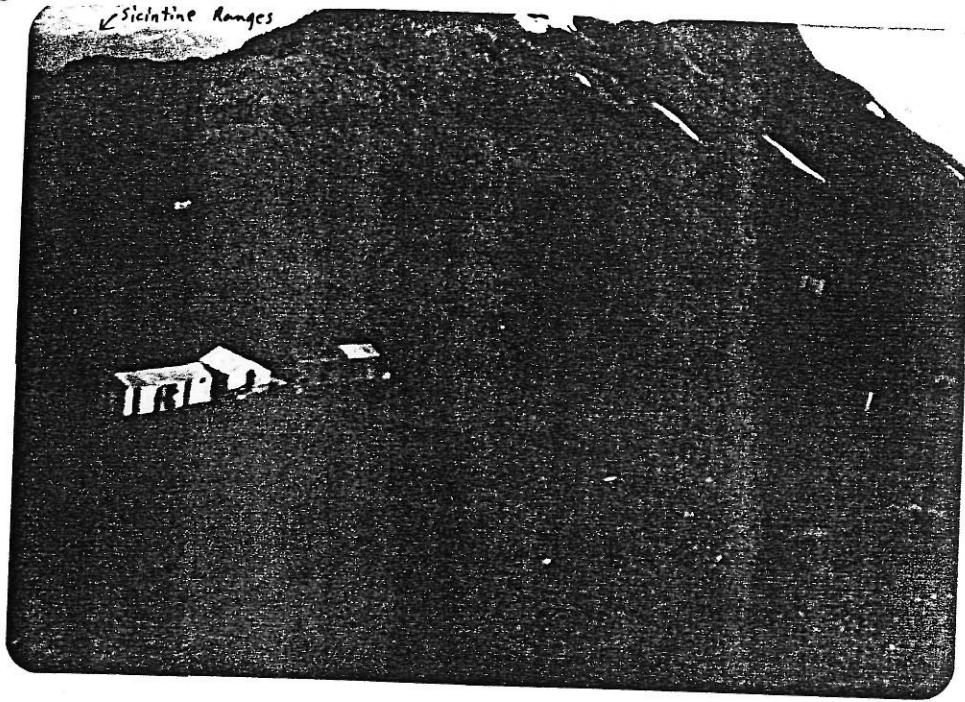
Sicintine Range



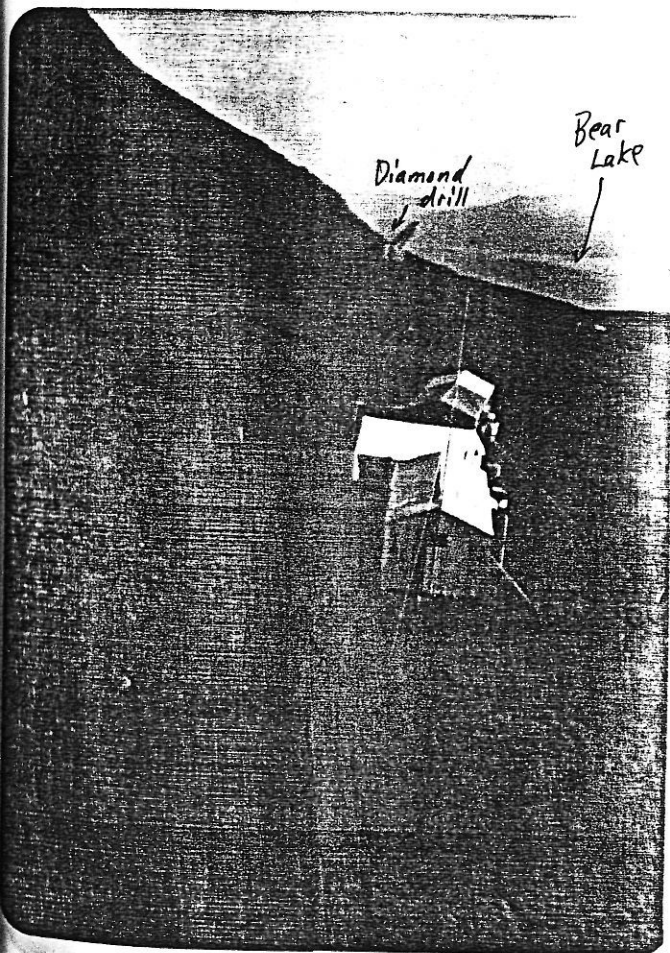
High grade
Cu shows

Bea

Looking westerly towards Sicintine Range - SPUR.



Looking westerly - SPUR.



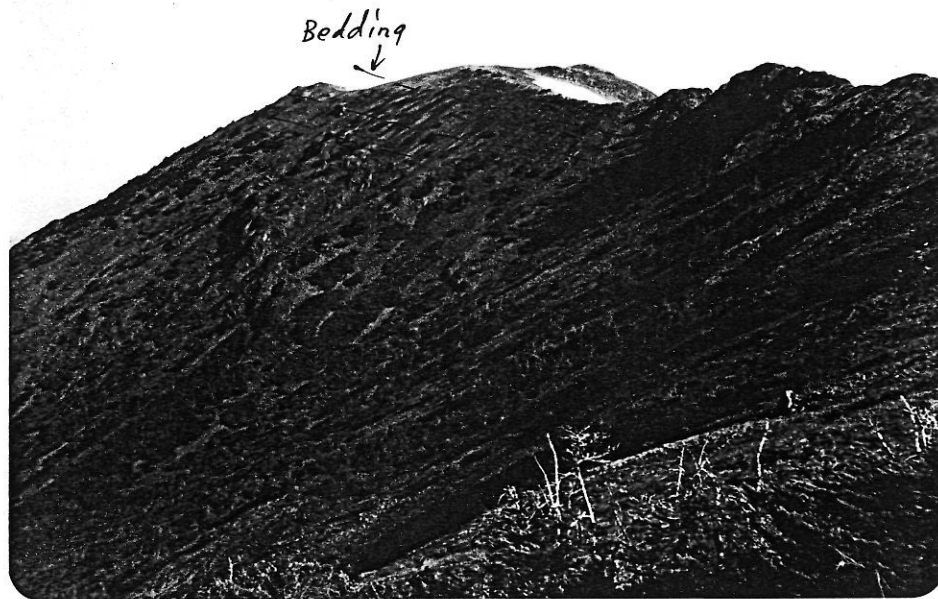
Looking north - SPUR.



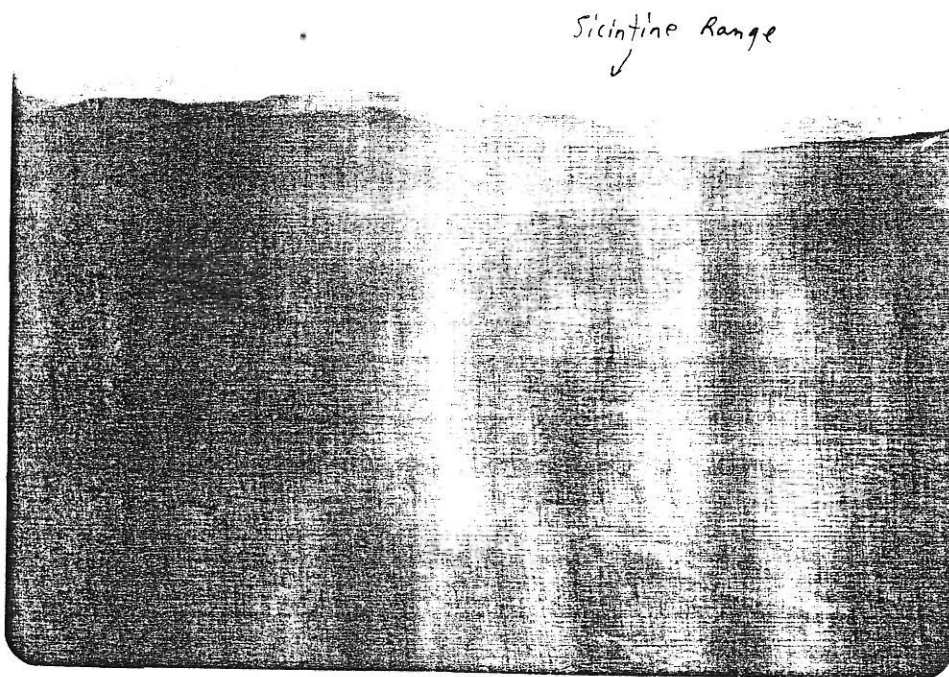
Looking SE - SPUR property.



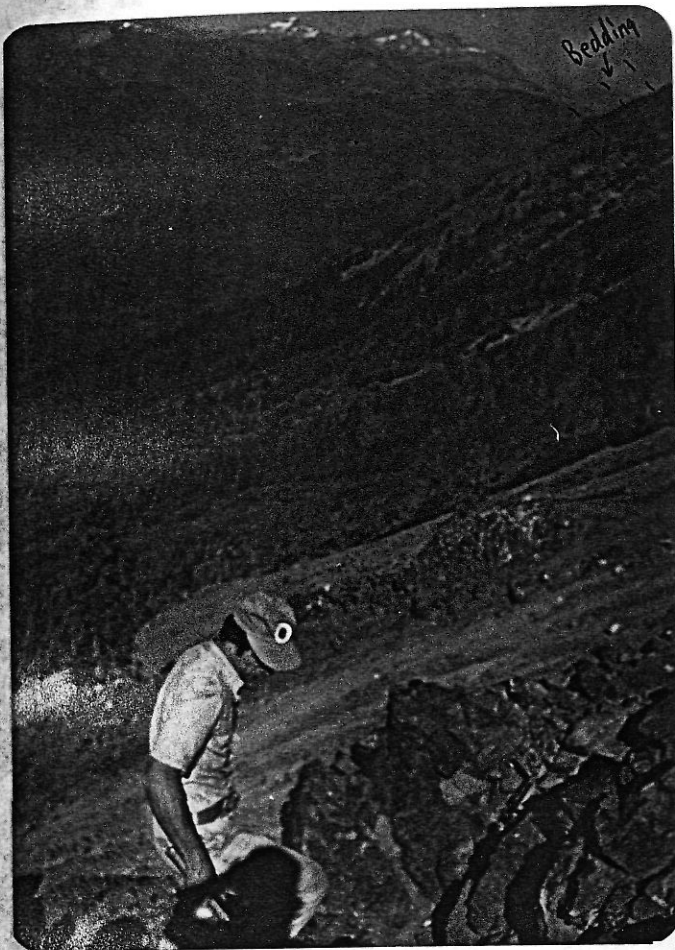
Diamond Drilling - SPUR.



Looking north along volcanoclastic - volcanic ridge - SPUR.

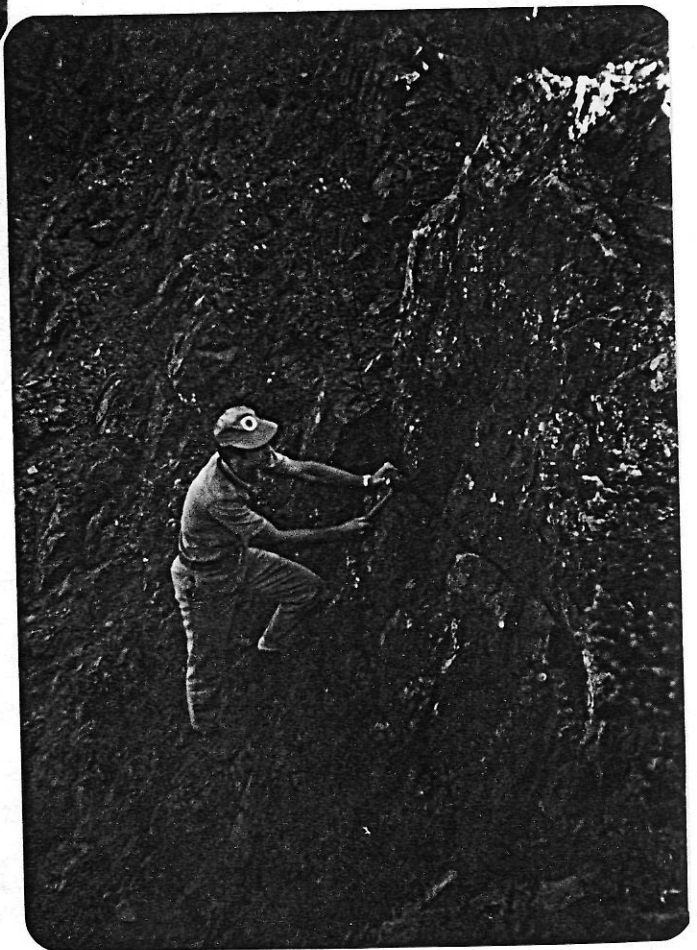


Looking west from SPUR property.



Looking northerly - SPUR.

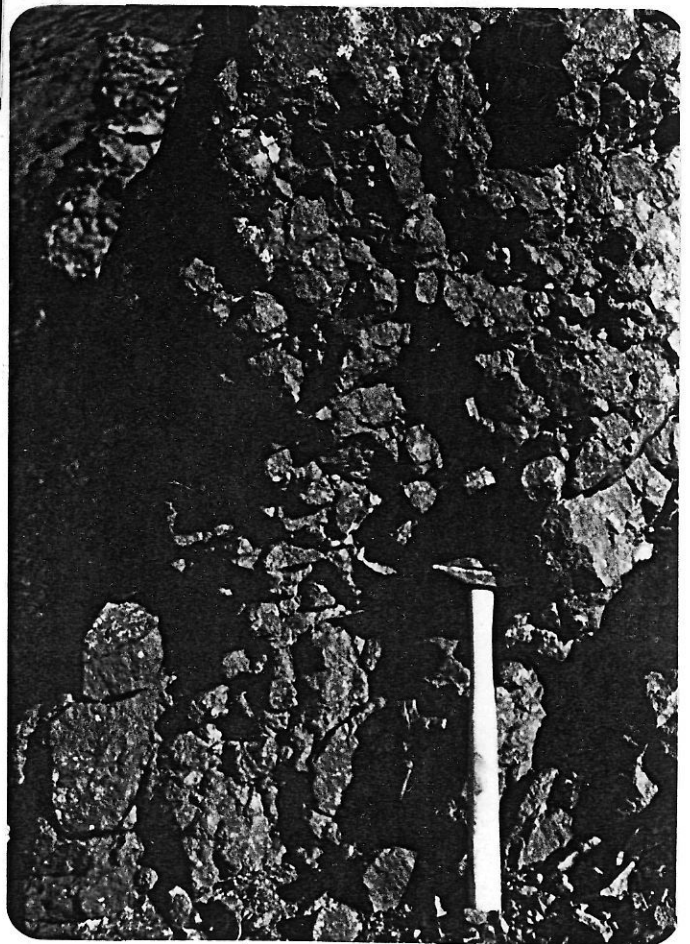
Contact between overlying red
volcaniclastic unit and under-
lying volcanic unit. Top of
volcanic unit is autobrecciated.

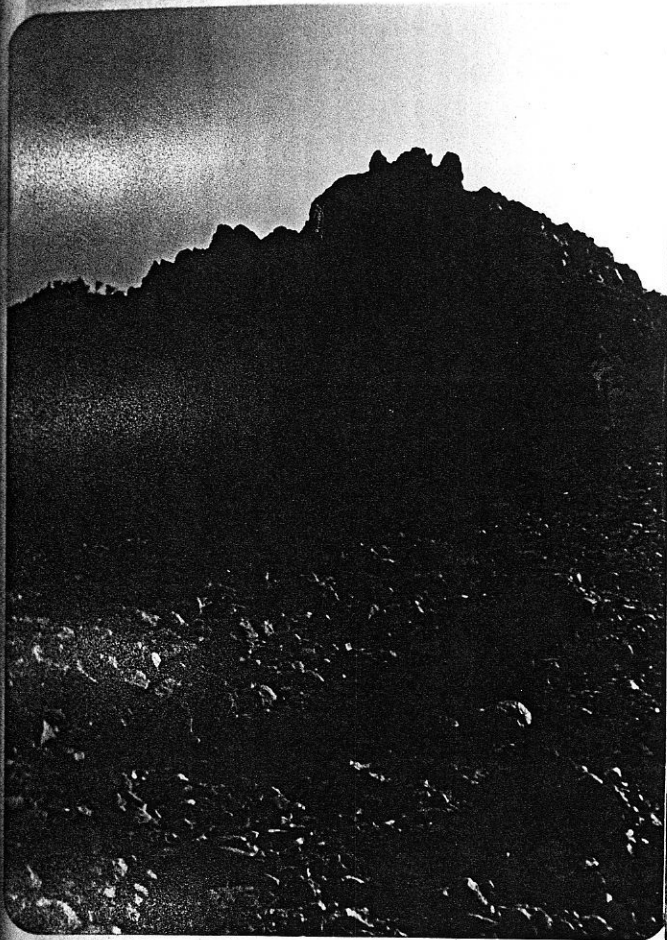




"Balling" in volcanics, - looking north - SPUR.

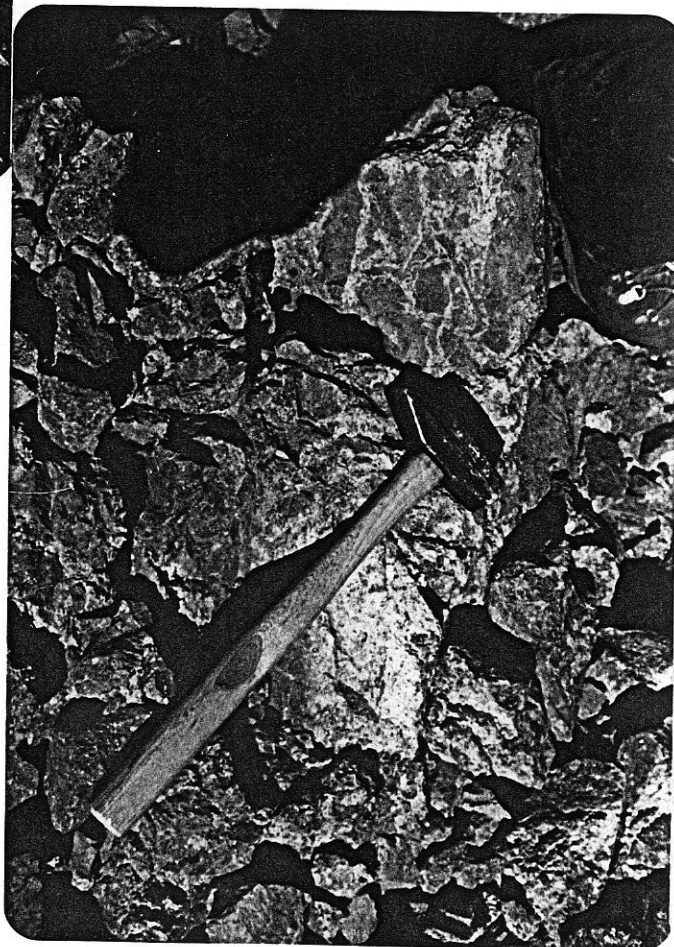
Close-up of "balling" in volcanics - SPUR.

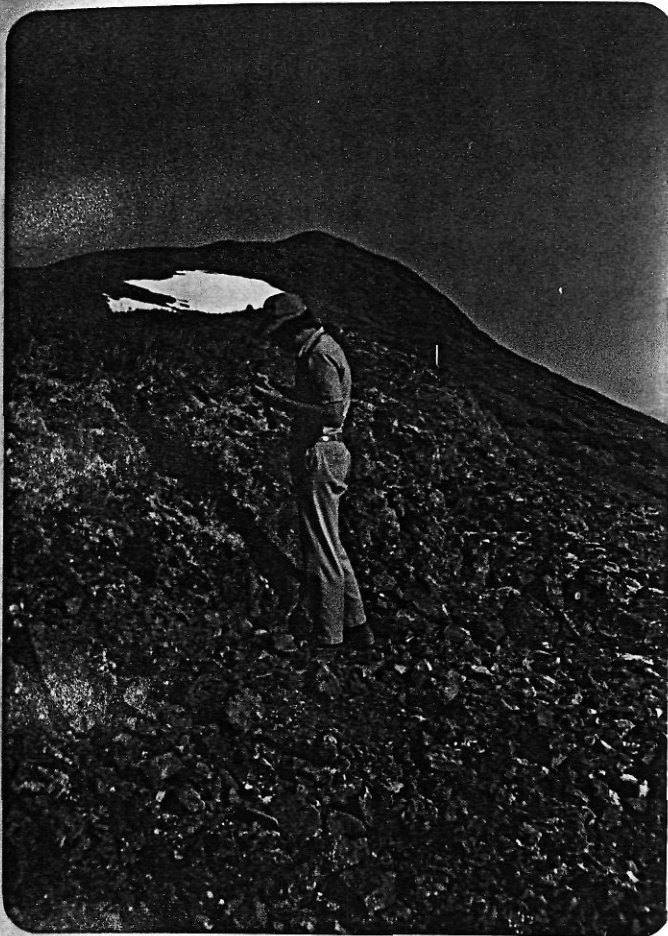




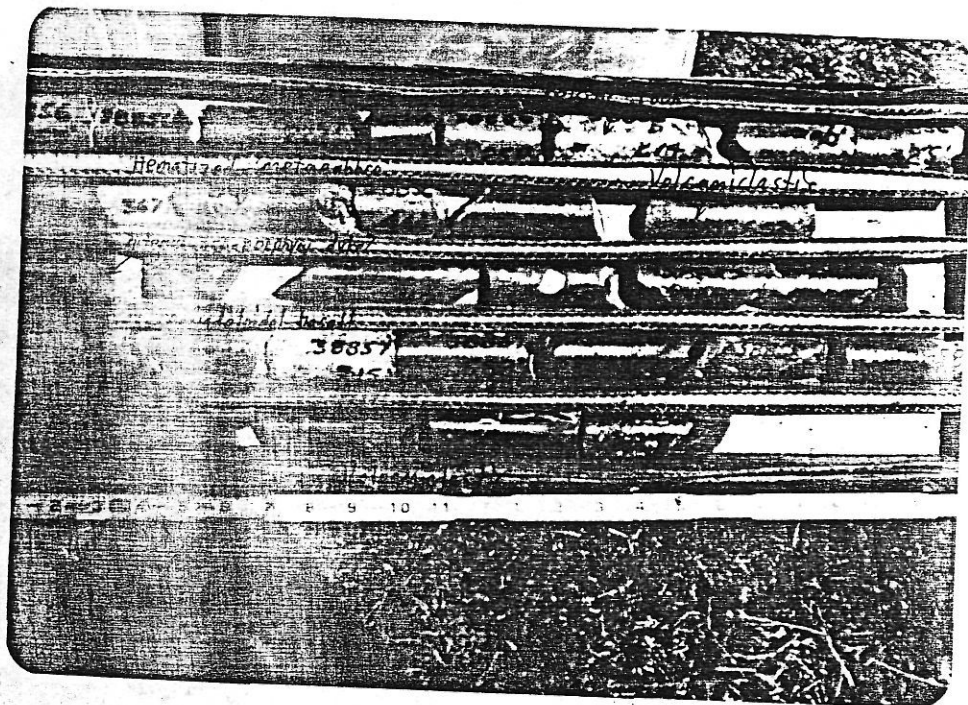
Well mineralized blocky west face -
SPUR.

Breccia cemented with pink
mineral plus bornite - SPUR.

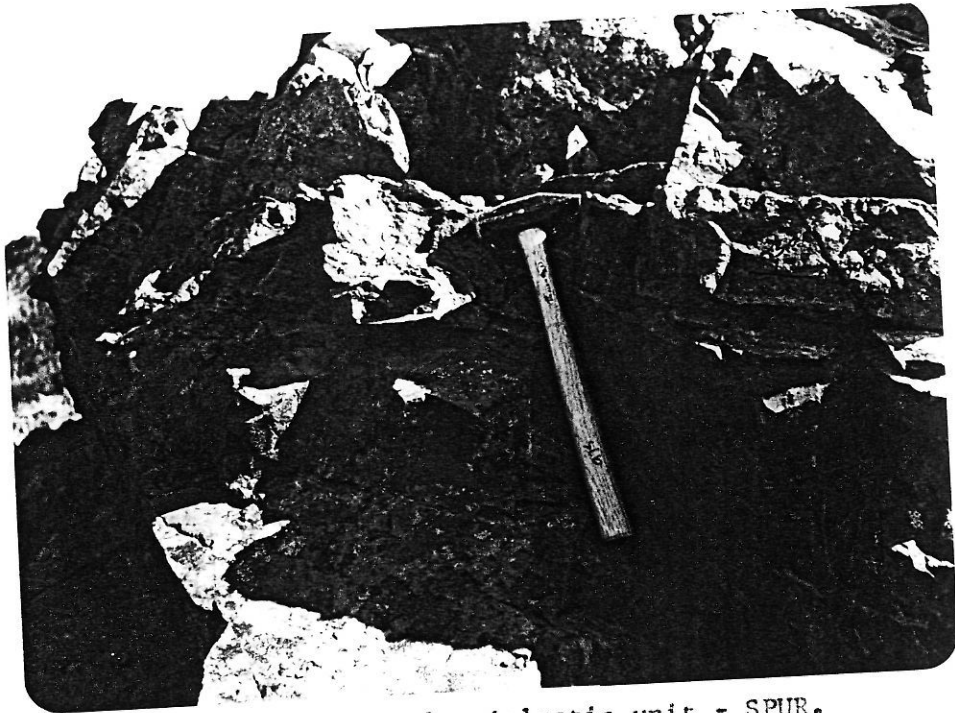




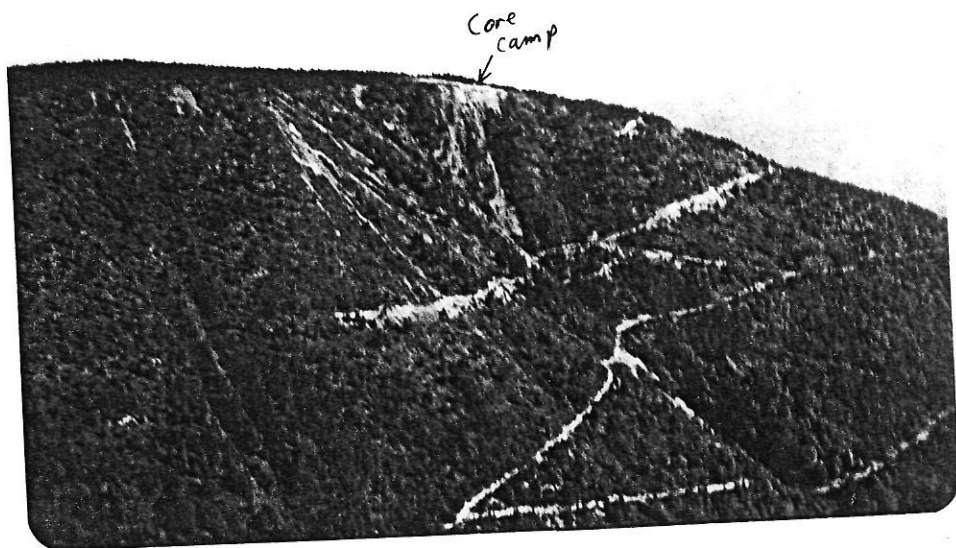
High-grade copper showing -
looking north, SPUR.



"Summary" of 1977 drilling - SPUR.



Pseudo - bedding? in volcaniclastic unit - SPUR.



Looking NE across IN property.

by a major NNE trending fault and a series of numerous crosscutting faults.

Volcanic textures such as "balling" (see photo) are well exposed as well as good sedimentary textures in the volcanoclastics.

High-grade pods of massive sulphide occur locally.

Inco diamond drilled four holes and has stored the core in Smithers. It will be examined later. Induced polarization surveys were carried out on the property during August and early September.

IN - Cities Service Minerals Corporation

On August 6th I visited the IN porphyry copper prospect located approximately 320 km north of Smithers just northwest of the north end of Bear Lake. Dave Silversides, geologist in charge, toured me on the property. Cities Service Minerals Corporation has a working option on the property with Canadian Superior and diamond drilled 2 holes totalling 440 meters in the valley bottom to the south of previous drilling by Canadian Superior. "Typical" altered BFP and QFP with chalcopyrite, molybdenite and pyrite was encountered in both holes. Good multiple quartz veining is locally abundant. There is a large altered, pyritized zone which requires much more work with possible emphasis to the northeast towards the old airstrip.

Telkwa Pass Area

On August 7th I visited the Telkwa Pass area. The road was impassible