

0920

→ Spokane  
Spokane  
888023

### SPOKANE PROPERTY

The Spokane, Ice and Syndicate showings are the highlight of the Spokane property.

#### Geology:

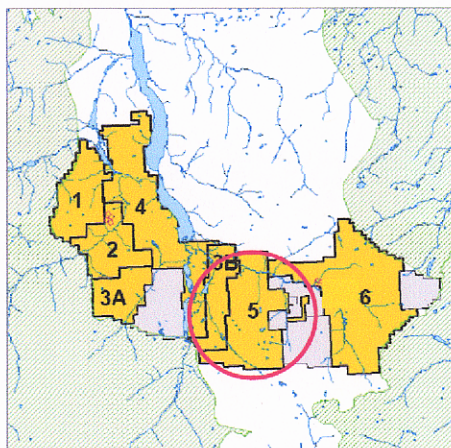
- Pyrite and pyrrhotite occur in altered joint sets near the granodiorite-volcanic contact.
- The granodiorite is described as hornblende-magnetite granodiorite to quartz diorite.
- The volcanics are intermediate flows and related clastic rocks of the Mid Cretaceous Kingswal Gr.
- The contact is hydrothermally altered to fine silica, sericite and clay with fine pyrite, pyrrhotite and chalcopyrite.

The Spokane showings consists of two north trending veins of inter-grown quartz with disseminated oxides pyrite and chalcopyrite, flanked by an area of silica replacement with up to 35% disseminated pyrite-chalcopyrite. The veins are adjacent to a 75 meters wide zone with sulphides knots with joint intersects carrying high value of chalcopyrite and gold. The chalcopyrite average content is 10% copper, 3 oz. silver and 1.3oz/ton gold.

The Syndicate showing is a pipe dike brecciated and silicified carrying disseminated pyrite and chalcopyrite. It is located between 6,500 and 7000 feet elevation on the top of a ridge forming the Amazon creek head waters.

The property has potential for:

- Copper-molybdenum and copper-silver-gold porphyries.
- Pueblo Viejo gold-silver deposits.
- Massive sulphides with gold-silver enrichment.



June '06  
www