

CANADIAN QUEEN FR. M.C.  
L. 2415

CANADIAN KING M.C.  
L. 2409

SKAGWAY M.C.  
L. 2265

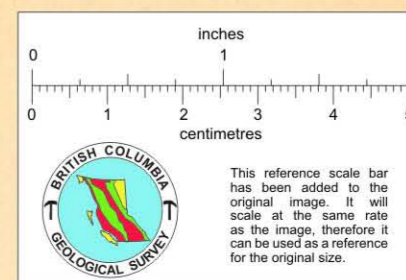
KING FR. M.C.  
L. 2417

GLEN MOUNTAIN M.C.  
L. 2264

SILVER STANDARD M.C.  
L. 2262

LEADVILLE M.C.  
L. 2260

STANDARD M.C.  
L. 2261



STOPPED AREAS

- No 1, 3, 11, 10X, 11X -
- No 4 -
- No 6 -
- No 7 -
- No 8 -

*Plan of Silver Standard M.C. L. 2262  
for filing under No. 1271111111  
J. H. H. H.*

SILVER STANDARD MINES LTD  
PLAN of WORKINGS & CLAIMS  
SCALE 1"=100' STOPPED AREAS MARKED  
DATE: MAY 1958  
TRACED - G.E.A. 61535

887591  
Silver Standard  
Hazelton

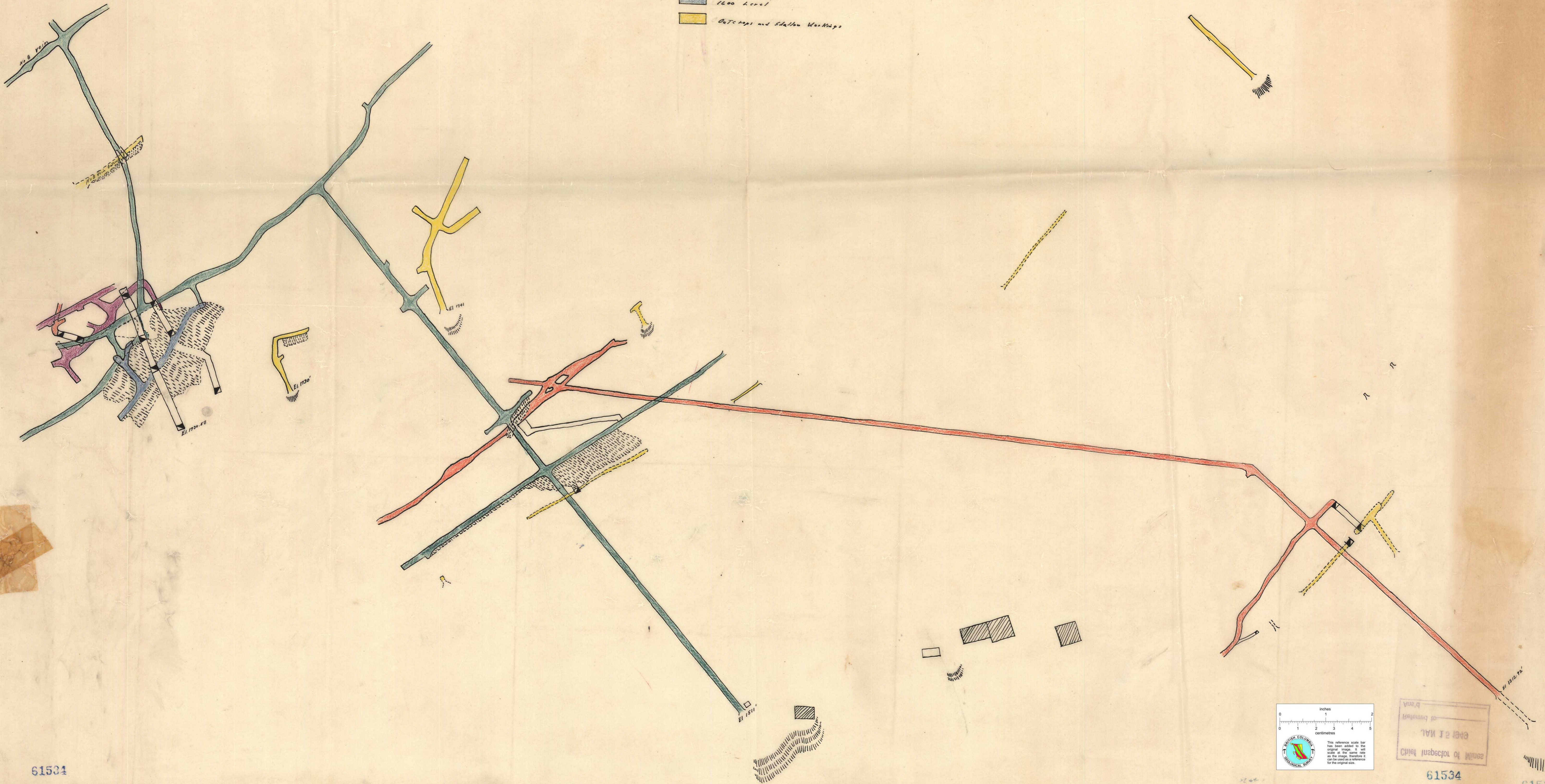
# SILVER STANDARD MINE

## PLAN OF WORKINGS

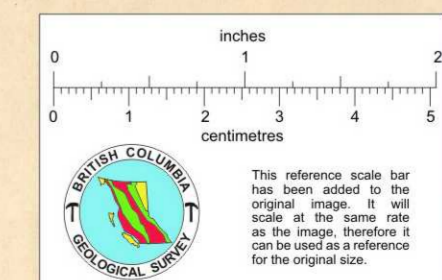
Scale: 1 inch = 60 ft

Sept. 1<sup>st</sup> 1948

- 1300 Level
- 1400 Level
- 1500 Level
- 1600 Level
- Outcrops and Shallow Workings



61534



UNITED STATES GEOLOGICAL SURVEY  
BUREAU OF MINES  
SILVER STANDARD MINE  
PLAN OF WORKINGS  
SEPTEMBER 1, 1948

61534

*W. D. Damm*

61534

SILVER STANDARD MINE