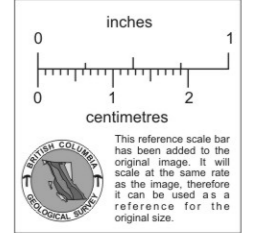
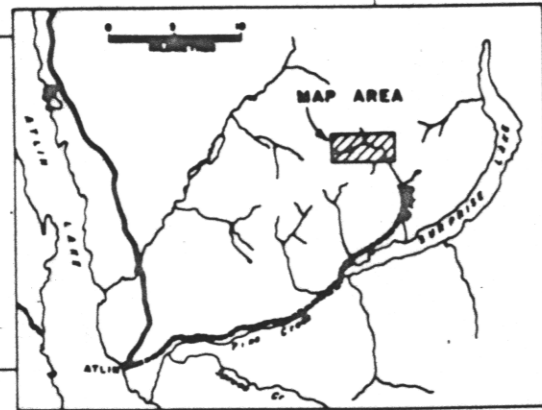


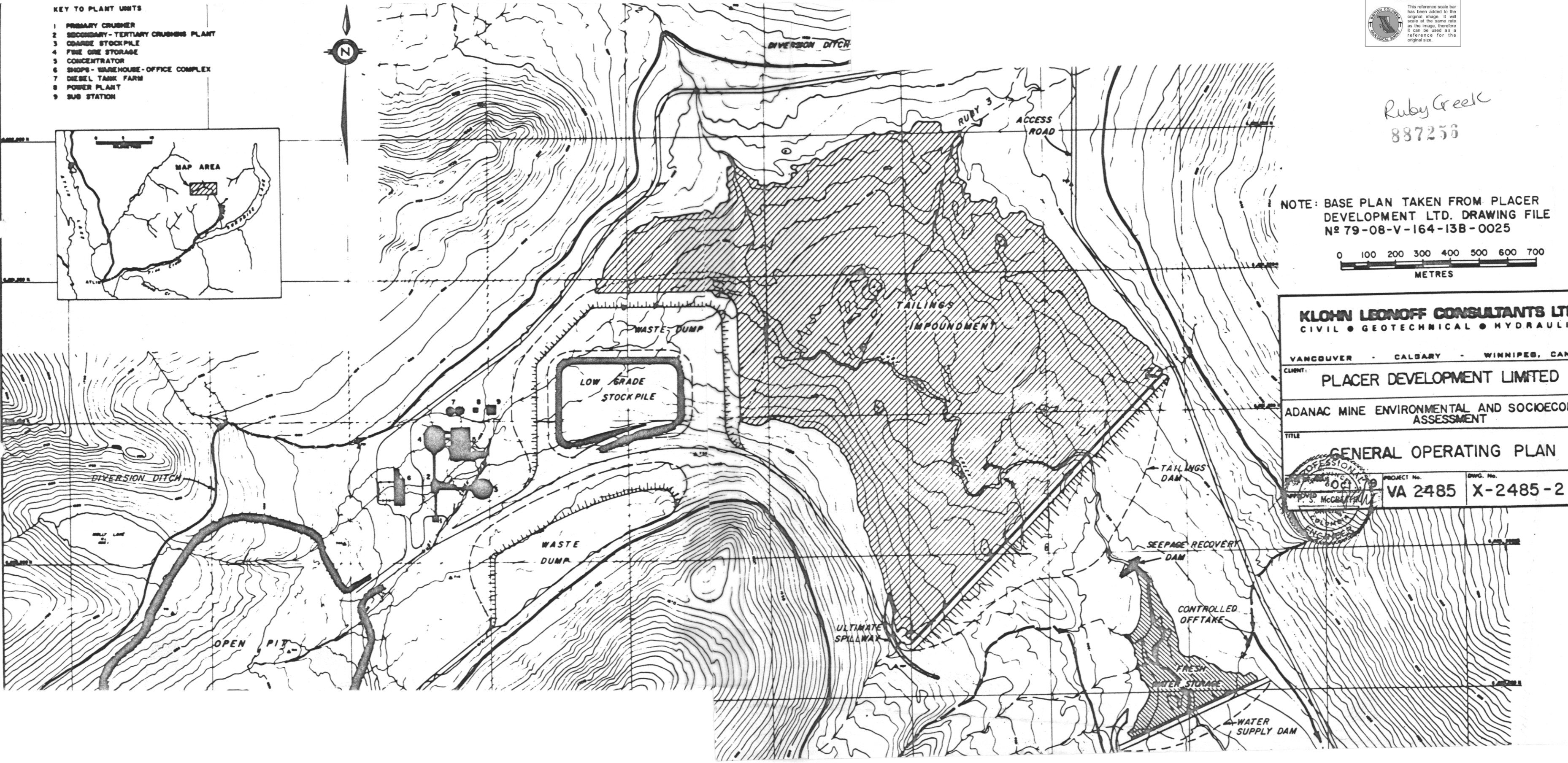
KEY TO PLANT UNITS

- 1 PRIMARY CRUSHER
- 2 SECONDARY - TERTIARY CRUSHERS PLANT
- 3 COARSE STOCKPILE
- 4 FINE GRIE STORAGE
- 5 CONCENTRATOR
- 6 SHOPS - WAREHOUSE - OFFICE COMPLEX
- 7 DIESEL TANK FARM
- 8 POWER PLANT
- 9 SUB STATION



Ruby Creek
887256

NOTE: BASE PLAN TAKEN FROM PLACER DEVELOPMENT LTD. DRAWING FILE N° 79-08-V-164-13B-0025



KLOHN LEONOFF CONSULTANTS LTD.
 CIVIL • GEOTECHNICAL • HYDRAULIC

VANCOUVER • CALGARY • WINNIPEG, CANADA

CLIENT: **PLACER DEVELOPMENT LIMITED**

ADANAC MINE ENVIRONMENTAL AND SOCIOECONOMIC ASSESSMENT

TITLE: **GENERAL OPERATING PLAN**

| | | |
|-------------|----------|------|
| PROJECT No. | DWG. No. | REV. |
| VA 2485 | X-2485-2 | |

