

*J.A. Chapman Mining Services*

#18 - 1480 Foster Street, White Rock, British Columbia, Canada, V4B 3X7  
ph: 604.536.8356, fax: 604.536.8351, res: 604.535.0038, E-mail: jacms1@sprynet.com

RIFT

June 21, 1999

Via E-Mail

Ron Coombes, President  
Orphan Boy Resources Inc.  
16518 - 86A Avenue  
Surrey, B.C. V4N 3G7

**CONFIDENTIAL**

Dear Ron:

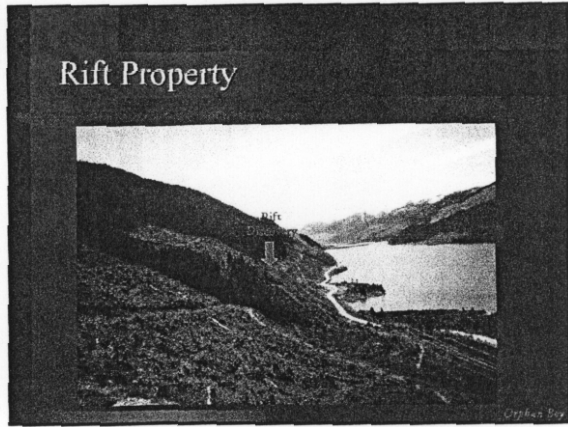
**RE: ENHANCING SHAREHOLDER VALUE**

This letter will confirm our discussions over the past week regarding the staking of open significant mineral showings in the Revelstoke area near Orphan Boy's Groundhog project. This is an opportunity for Orphan Boy to acquire low elevation properties that major companies have advanced to a "drill ready" stage and for reasons unknown abandoned. I have never seen the Mineral Tenure maps looking so "naked" as they do now in British Columbia, and specifically in the highly mineralized belt of the Selkirk Mountains north and south of Revelstoke. The targets proposed are near past producing mines and are Sedex massive sulfides that contain zinc. All three of these factors are considered strengths at present in the "eyes" of the brokerage community.

The two primary targets at this time are the Rift prospect and Copper Queen showing which are designated as Minfile 082M190 (NTS 082M15E nad27) and Minfile 082M004 (NTS 082M01E nad27) respectively.

The Rift is a Sedex Zn, Pb, Ag prospect that was discovered by E&B Explorations Ltd., in August 1980 on Rift Creek, near its confluence with the Columbia River. The stratabound massive sulfide discovery showing, located 800 meters asl, assayed 30% zinc and 7% lead over 0.8 meters thickness, and the associated footwall disseminated sulfides assayed 2.39% zinc and 0.4% lead up to 1.6 meters thick. There is another massive sulfide strata 90 meters stratigraphically above the main showing, and at 100 meters above the showing there is a pod-like sheared ultramafic unit that is elevated in nickel (2300 ppm) and cobalt (106 ppm). These mineralized strata are contained within a 400 meter thick unit of metasedimentary and metavolcanic rocks that are bounded by marble units and are intruded by sills and dykes of porphyritic quartz monzonite. In 1985 E&B, under the field management of John Bellamy, conducted a five hole core drilling program (AR#14163) which resulted in one hole (M-85-2) intersecting 1.82 meters of high-grade sulfides (20% zinc, 5% lead) at a point approximately 400 meters east of the original discovery. This drilling indicates there is potential for a mineable deposit. Highway 23 (paved), and BCHydro power lines pass over the property. In addition, there is a relatively flat area (about 75 to 100 acres) that would be suitable for underground access staging as well as accommodating a processing plant and tailings facility. This is a property of good merit, located 30 kilometers northwest of the Goldstream mine, within a zone of highest ranking for mineral discovery potential by the British Columbia Geological Survey Branch.

→ Rift  
(Orphan Boy Res  
AGM, Oct. 23/14)



---

---

---

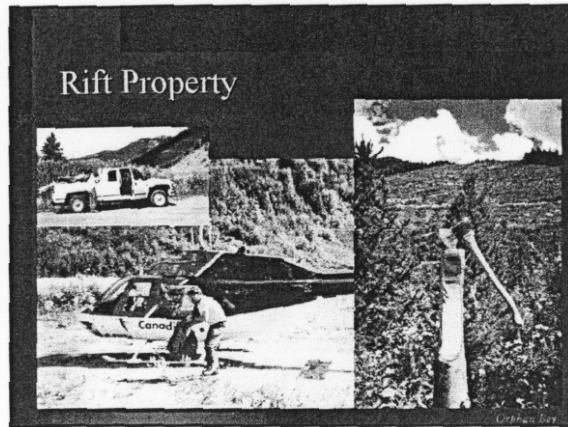
---

---

---

---

---



---

---

---

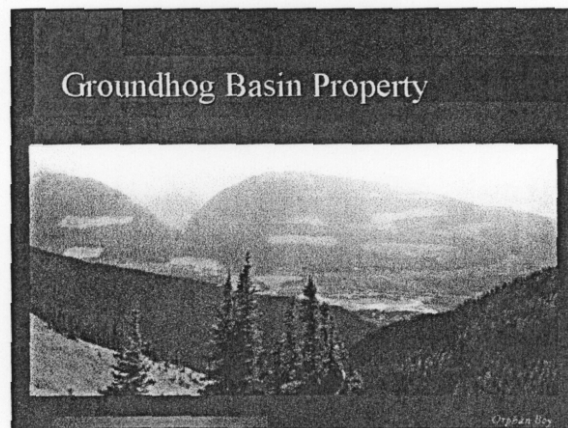
---

---

---

---

---



---

---

---

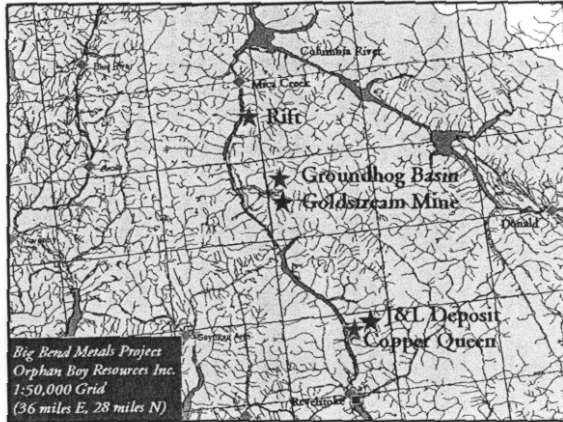
---

---

---

---

---




---

---

---

---

---

---

---

---

**Big Bend Metals Exploration**

GSB ranks mineral discovery potential as very high (top 90% in province)  
 Main discovery potential is for polymetallic VMS deposits and vein gold  
 Area has a history of precious and base metals production  
 Building on work done by others the Company has expended \$450,000

---

---

---

---

---

---

---

---

**Big Bend Metals Properties**

Rift: Sedex prospect discovered by E&B Explorations Ltd. in 1980  
 Groundhog Basin: Vein gold prospect with apparent VMS potential, adjacent to Goldstream Mine (VMS)  
 Copper Queen: VMS prospect adjacent to J&L deposit

---

---

---

---

---

---

---

---