

- Red Mt.

886994 Jan '92

**RED MOUNTAIN PROPERTY  
SUMMARY**

**RED MOUNTAIN PROPERTY:** LAC Minerals Ltd is searching for a JV partner to further explore the Red Mountain Property near Stewart, B.C. The property has the potential to host a reserve of 1 to 2 million ounces of gold.

**DEPOSIT TYPE:** At the Marc Zone, a mineral inventory of 900,000 tonnes containing 12.2 grams/tonne occurs in coarse grained pyrite veins and stockworks. The zone is a 350 metre long, north 30 to 40 degree plunging shoot, which lies on a large alteration zone that halos the Goldslide Intrusion. Alteration and mineralization is interpreted to lie within an apron of volcanic breccias around an endogenous dome. A potential exists down plunge to double the size of the Marc Zone and to discover other Marc Zone-like shoots within the large alteration halo of the Goldslide Intrusion.

The untested, base metal rich, stratabound UTEM Zone mineralization lies stratigraphically above Marc Zone with a best drill hole intersection of 5.6% Zn, 69.2g/t Ag and 0.58g/t Au over 9.0 metres.

**LOCATION:** NTS: 103P/13, Lat: 55° 57' North; Long: 129° 42' West Red Mountain is located 15 km east of the sea port of Stewart, B.C. A 2,000 tonne per day mill, owned by Westmin Resources, is located 11 km north of Stewart. Access into Red Mountain mineralization could be by underground tunnel, road or tramway from Bitter Creek.

**PROPERTY STATUS:**

Lac Minerals has 100% of 62 claims of which 7 key claims are subject to a 2.5% NSR and a \$50,000 royalty payment to start in 1997.

Harkley Silver option related to 24 claims with a 100% earn-in option by LAC subject to fourth and fifth payments of \$100,000 (30/09/92) and \$150,000 (30/09/93).

Krohman option related to 11 claims with a 100% earn-in option by LAC subject to fourth and fifth payments of \$25,125 each on 30/09/92 and 30/09/93.

**SENSITIVITIES:**

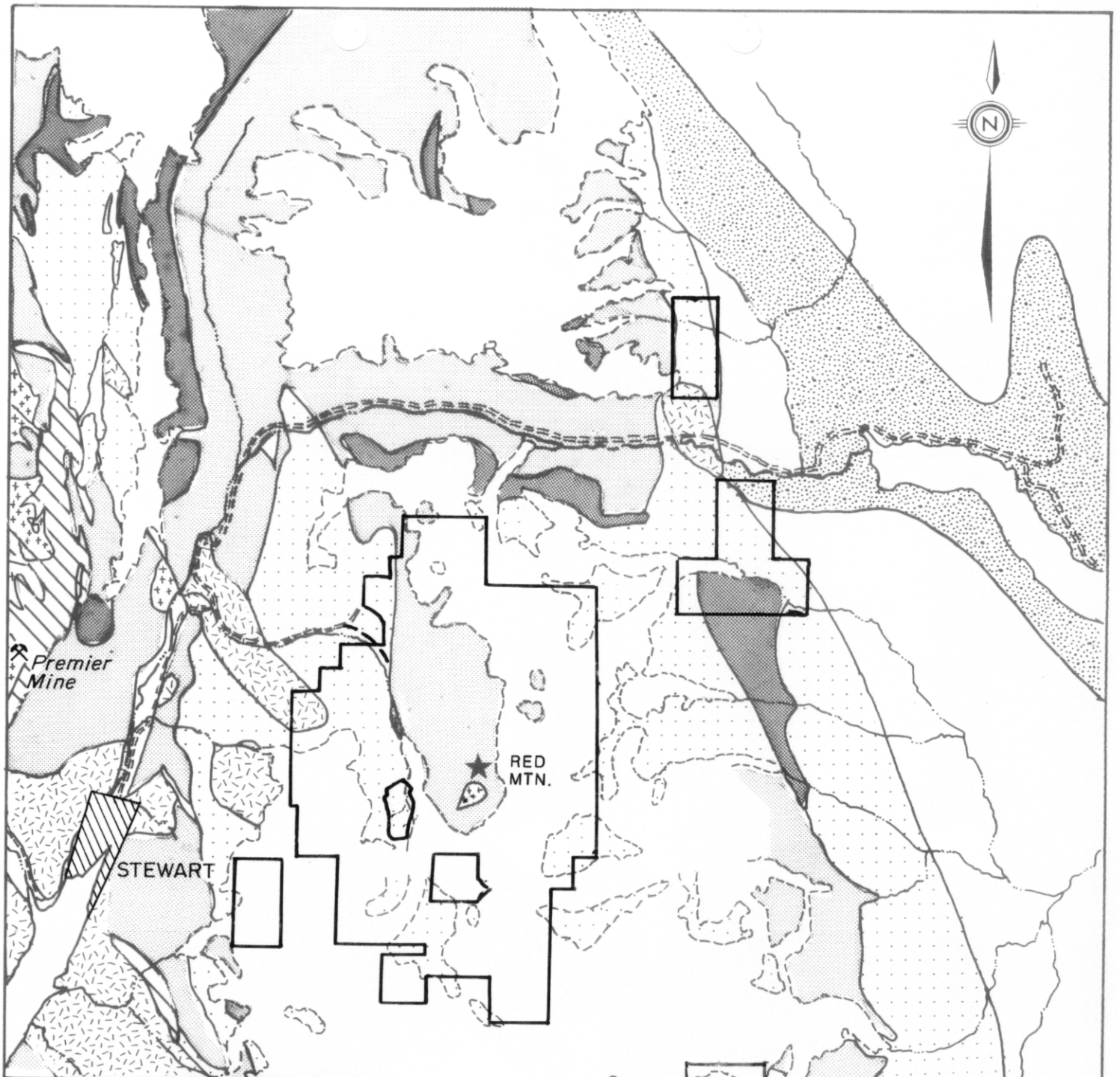
**Acid drainage:** The mineralized area drains into the spawning salmon run in Bear River.

**Access:** The valley of Bitter Creek is prone to avalanches.

**EXPENDITURES: Total: \$6,000,000**

<b>Total drilling:</b>	<b>19,993 metres in</b>	<b>92 holes</b>
<b>Marc Zone</b>		<b>70 holes</b>
<b>Brad Zone</b>		<b>6 holes</b>
<b>Other Targets</b>		<b>16 holes</b>

**5,220 kilometers of airborne EM, magnetometer  
and resistivity survey.**



**SEDIMENTARY & VOLCANIC ROCKS**

**UPPER JURASSIC**

Nass Fm

**MIDDLE JURASSIC**

Salmon River Fm

Betty Creek Fm

**LOWER JURASSIC**

Unuk River Fm

**PLUTONIC ROCKS**

**EOCENE & OLDER**

Quartz Diorite-Granodiorite

**MIDDLE JURASSIC & YOUNGER**

Syenodiorite

**METAMORPHIC ROCKS**

**JURASSIC**

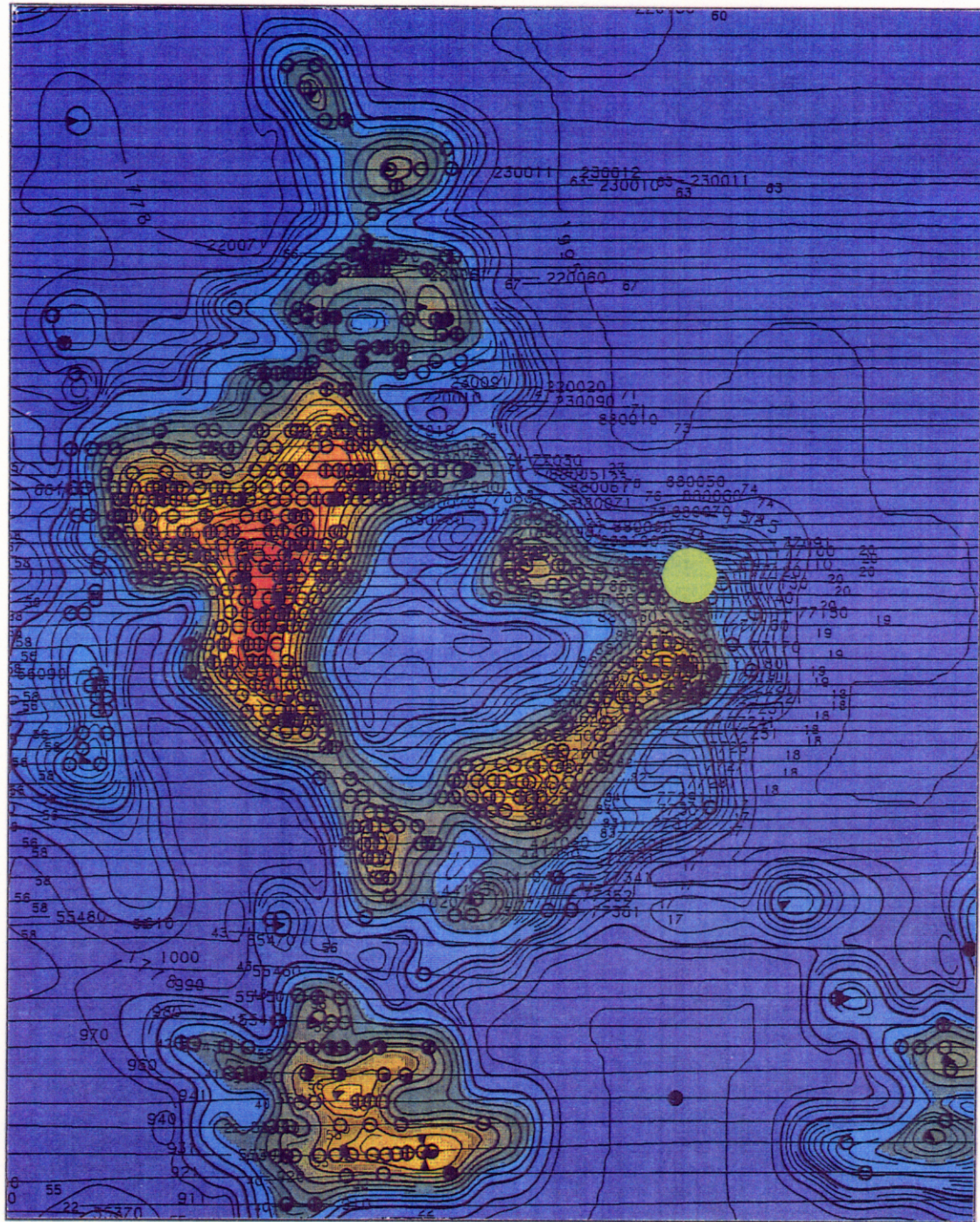
Cataclastic Mylonite

LAC MINERALS LTD.

REGIONAL GEOLOGY

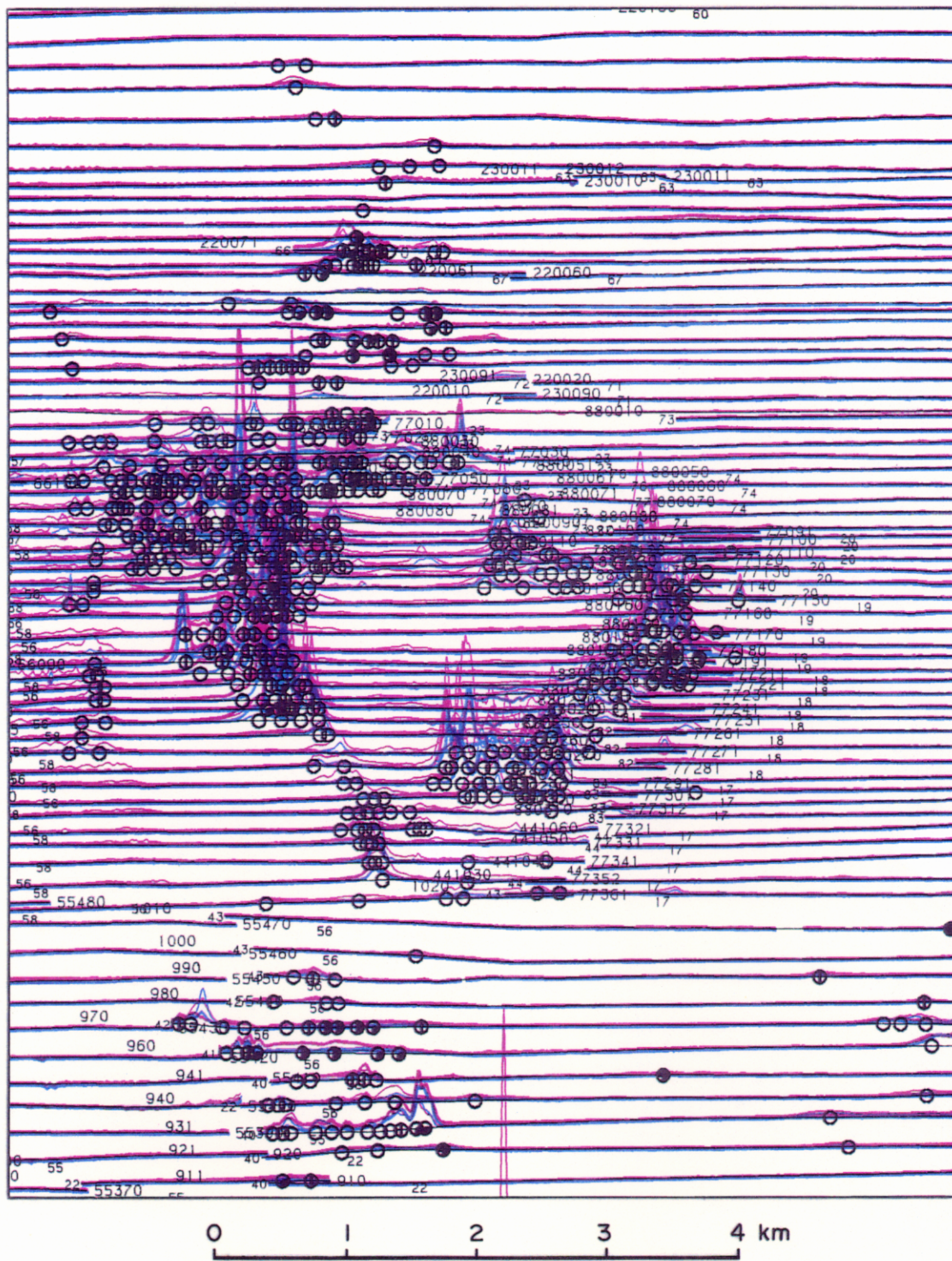
0 2 4 6 8 10 Km

# APPARENT RESISTIVITY MAP



Resistivity anomaly around the Goldslide Intrusion. The Marc Zone location is the large colored dot. The resistivity anomaly follows the hydrothermal alteration.

# ELECTROMAGNETIC PROFILES MAP



Electromagnetic profiles anomaly around the Goldslide Intrusion. In the Marc Zone area the anomalies are caused by massive sulphide vein and stockwork mineralization in hydrothermal altered volcanic breccias.