

LEGEND *GEM 1079* Figure 34 *TGS*

RED and CHRIS CLAIM GROUPS

BEDDED ROCKS

TERTIARY OR QUATERNARY (TQvb)

Basalt

MIDDLE JURASSIC OR OLDER (MJvb)

Basalt flows, flow breccias; greywacke, siltstone

Sandstone, siltstone, conglomerate

MIDDLE JURASSIC (JKS)

Sandstone, siltstone conglomerate, limestone

INTRUSIVE ROCKS

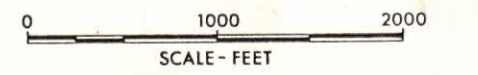
CRETACEOUS OR TERTIARY OR OLDER (KTqfp)

Dykes: chlorite feldspar porphyry, biotite feldspar porphyry, felsite, biotite lamprophyre

Feldspar porphyry, quartz bearing feldspar porphyry.

SYMBOLS

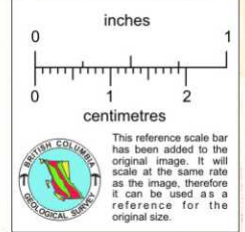
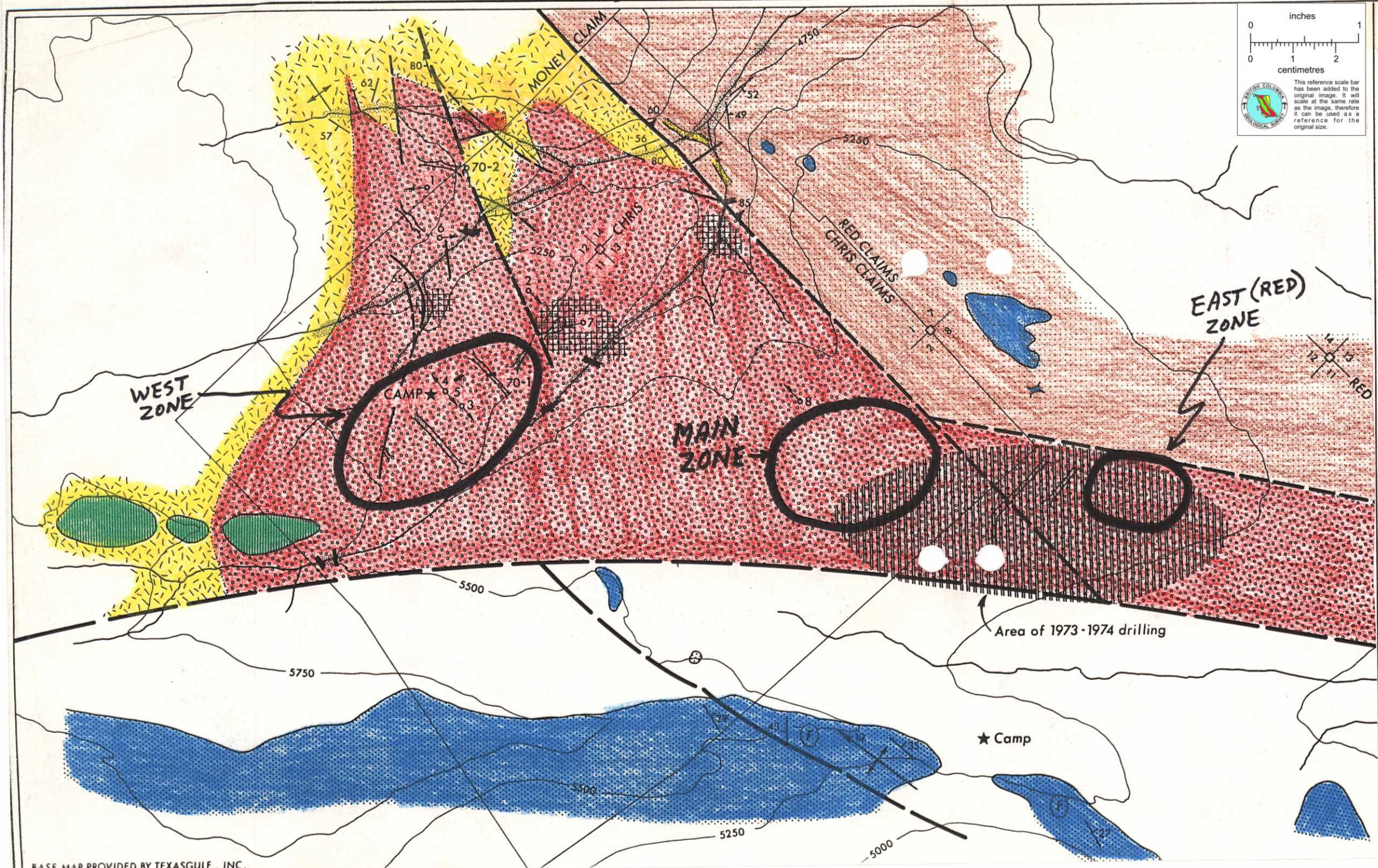
- BULLDOZER TRENCHES
- DIAMOND DRILL HOLE (1970, 1972)
- BEDDING
- FOLD AXIS
- FOSSIL LOCALITY
- MAJOR FAULT, location approximate
- MAJOR FAULT, location assumed
- FAULT, SHEAR, OR FRACTURE ZONE, locally silicified or quartz veined
- QUARTZ STOCKWORK, with pyrite, chalcopryite, malachite, azurite



Traverse
Aug. 18/76
TGS

886902
Red Chris

Figure 34



LEGEND

RED and CHRIS CLAIM GROUPS

BEDDED ROCKS

- TERTIARY OR QUATERNARY (TQvb)
 - Basalt
- MIDDLE JURASSIC OR OLDER (MJvb)
 - Basalt flows, flow breccias; greywacke, siltstone
 - Sandstone, siltstone, conglomerate
- MIDDLE JURASSIC (JKS)
 - Sandstone, siltstone conglomerate, limestone

INTRUSIVE ROCKS

- CRETACEOUS OR TERTIARY OR OLDER (KTqfp)
 - Dykes: chlorite feldspar porphyry, biotite feldspar porphyry, felsite, biotite lamprophyre
 - Feldspar porphyry, quartz bearing feldspar porphyry.

SYMBOLS

- BULLDOZER TRENCHES
- DIAMOND DRILL HOLE (1970, 1972)
- BEDDING
- FOLD AXIS
- FOSSIL LOCALITY
- MAJOR FAULT, location approximate
- MAJOR FAULT, location assumed
- FAULT, SHEAR, OR FRACTURE ZONE, locally silicified or quartz veined
- QUARTZ STOCKWORK, with pyrite, chalcopyrite, malachite, azurite

