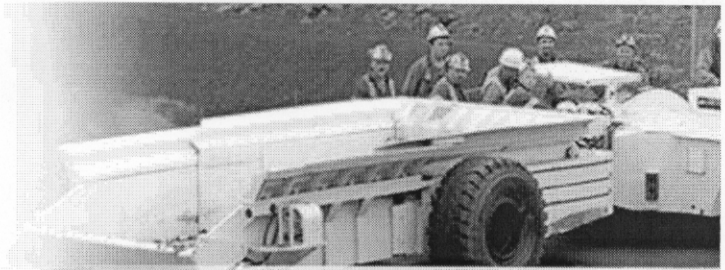


→ Quinsam



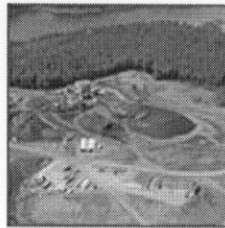
HILLSBOROUGH
Resources Limited
Growing with Energy

- ▶ Home
- ▶ About Hillsborough
- ▶ Investor Relations
- ▶ **Operations/Exploration**
- ▶ Coal-Present/Future
- ▶ Sustainability



New Ram Cars for Quinsam and Cro

QUINSAM MINE



Aerial view of Quinsam Mine

Quinsam mine is an underground thermal coal mine with an annualized production rate of 520,000 clean tonnes. It is wholly owned by Hillsborough Resources and is the Company's primary operating mine, located near Campbell River, BC Canada.

The mine serves the local and west-coast cement industry as well as local niche markets such as pulp and paper plants. Approximately one-third of annual production is available for the spot international market.

- ▶ What
- ▶ Hillsbo
Coal F
for Ho
Area r
- ▶ Hillsbo
Gener
- ▶ David
Rotary

Quinsam produces high volatile bituminous coal with a calorific value of 6,600 Kcal/kg (11,900 Btu/lb on an air dried basis) and 6,200 Kcal/kg (11,200 Btu/lb on an as received basis). For detailed specifications or to purchase coal, please contact the Quinsam Coal Mine office.

▶ Share

The product is shipped out of the **Middlepoint Barge Loading facility**. This modern and efficient facility was acquired in 2004 and is owned and operated by Hillsborough Resources. It has a storage capacity of 15,000 tonnes and a loading rate of 2,000 tonnes per hour. The truck haul from Quinsam is approximately 32km. International shipments are shipped from Texada Island Loading Facility.

▶ Cont



Quinsam Mine and Shipping Facilities

Quinsam Mine Facts

Annual Production: 765,000 raw tonnes or 520,000 clean tonnes

Coal Type: Thermal Coal, also known as steam coal, is part of the bituminous coal group and is used primarily for power generation, cement manufacture and industrial uses.

Reserves and Resources: As of December 31st, 2005 the Quinsam mine

had 25.7 million tonnes of reserves and resources, 9.1 million tonnes are estimated to have a sulphur content of less than 1%.

Number of Employees: 91 excluding contractors. The mine credits much of its safety and operational success to the high caliber its employees. Please visit Hillsborough Resources [Safety](#), [Community](#) and [Environment](#) sections for more information on each of these areas.

Mining Method: A fully mechanized retreat room and pillar operation that uses remote-controlled continuous miners.

Wash plant: Capacity of 250 raw tonnes per hour; processes run of mine coal to clean saleable product.

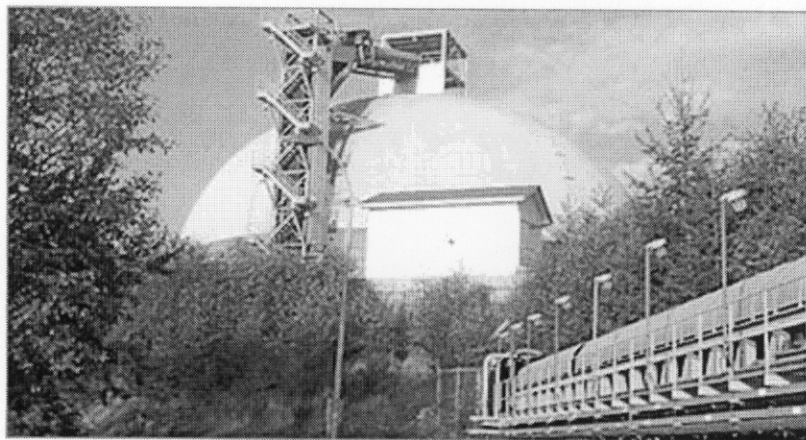
Timeline:

1987 - commenced surface operations

1990 - commenced underground operations

1994 - ceased open pit operations

2000 - Hillsborough achieves 100% ownership of Quinsam Coal Corporation



Middlepoint Storage and Barge Loading Facility

[top](#)

© Hillsborough Resources Limited | [Sitemap](#) | [Disclaimer](#) | [Privacy Policy](#)

Website design in Vancouver by [Graphically Speaking](#)