

Native

JOURNAL

Prosperity
886556

OCTOBER 1997

Volume 6 • Number 9

“Bridging the Gap between Cultures in the Spirit of a Brighter Future ... an Aboriginal Partnership”



ground trauma. Practicing a what you take out, you bring back policy, airlifting and disposing of garbage in a central garbage area within a nearby town or community, does much to ensure a clean and safe camp.

Once an economically viable mineral deposit has been identified, studies and sampling programs are carried out to provide information needed to prepare plans for the proposed mine. Planning involves an indepth look at the project, from cradle to grave.

This entails a detailed examination of the ecosystem including: wildlife and vegetation, water, air, and soil quality, climate, and historical and archaeological sites. The information collected provides the framework against which future analysis will be evaluated.

During the planning stage three main factors require careful and detailed investigation. They are a feasibility study, an environmental impact statement and a reclamation plan. A feasibility study involves determining if the proposed mine is economically viable and technically possible. Pending the results of this study the mining company will decide whether or not to carry on with mine development.



reserve was developed. They are still here. The own reserve sits empty with no improvements done yet like a road and bridge for access.

We, the original members want our own reserve back so that our own people can move back. Because we have let them in, they now out number the original members and have their own Chief and council in power. The membership code that is in place makes it hard for our own members to return to their homes. Our elders are refused housing because the reason is that there is none available for them. I know for a fact that housing can be

may result in lost jobs or no welfare. I am currently in school, so I have no extra income but I don't worry about retaliations for speaking out. The Great Spirit guides me and helps me.

I am 50 years old and I want to see my grandchildren grow to be proud to be Indians of our reserve and not deprived of necessities that are available for their well-being. So I thank you all for reading my letter and admire those that do speak out and commend the Samson Reserve members for their actions in their sit-in.

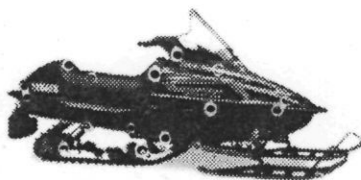
E.J. Cheecham

YOU NOT THIS!!

(03) 458-7272

Max XT600

per/DAY + TAX
x 48 month
2639.60



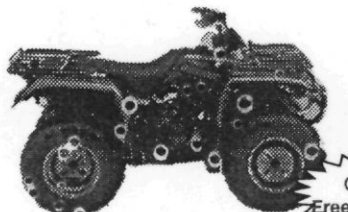
\$0 DOWN
O.A.C.

New 1997 V-max XTC500

\$4³⁸ per/DAY + TAX
Lease \$131.55 x 48 month
Residual \$2599.60

Big Bear

per/DAY + TAX
x 48 month
2009.70

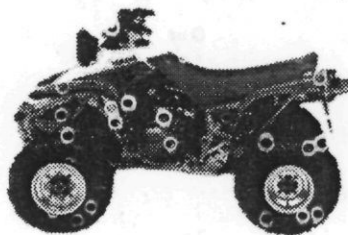


New 1998 Kodiak 4x4

\$5⁵⁹ per/DAY + TAX
Lease \$167.87 x 48 month
Residual \$2309.70
C/W Free Winch

Berwolf 2x4

per/DAY + TAX
x 48 months
1469.70



New 1998 350 Warrior

\$4³⁶ per/DAY + TAX
Lease \$130.88 x 48 month
Residual \$1897.50

Wolverine

per/DAY + TAX
7 x 48 month
2309.70



New 1998 Breeze

\$3⁰³ per/DAY + TAX
Lease \$91.01 x 48 month
Residual \$1244.70

license or registration fees. O.A.C. Limited time offer. Not available to commercial purchases. Consumer term plus applicable taxes. See us for return or financing options. Prices and payments subject to change.

What we do for fun is our business!!

YAMAHA-SUZUKI POWER
St. Albert HWY. 2 North 458-7272

Native JOURNAL

Bridging the Gap between
Cultures in the Spirit of a
Brighter Future...
an Aboriginal Partnership

P.O. Box 49039
Edmonton, Alberta T6E 6H4
Phone (403) 448-9693 Fax (403) 448-9694
Email: carjoncplanet.eon.net

PUBLISHERS

H. Gaudet/J. Belhumeur

CHIEF EDITOR

H. Gaudet

PRODUCTION EDITOR

Teri Lambert

COPY EDITOR

Carole Belhumeur

DIRECTOR OF MARKETING/PUBLIC RELATIONS

Jon Belhumeur

NATIONAL ADVERTISING SALES

Elaine Shuffita

Mary Haggart

Rachel Wood

CONTRIBUTING WRITERS

Allan Beaver
Carole Belhumeur
Kathlee Keane

Calvin Daniels
Lauren Hill

Native Journal and Thunderbird Communications have merged. Thunderbird Communications is an Aboriginal Communications firm owned by Jon and Carole Belhumeur.

Native Journal is published in the interest of, and for providing information regarding Native issues. We are not a charitable organization.

The opinions expressed herein are not necessarily those of the publishers and staff.

Native Journal is published monthly and distributed free of charge throughout Canada. A fee is charged for directed mail subscriptions.

COPYRIGHT: No part of this publication may be reproduced in whole or in part without the written consent of the publishers. Advertisements designed, set, and produced by Native Journal, as well as pictures, graphics, filler art, and news content are the property of Native Journal and may not be used without the expressed written permission of the publisher of this newspaper. Any reproduction is strictly prohibited.

CANADIAN PUBLICATIONS MAIL SALES
PRODUCT AGREEMENT NO. 148970

Cooperation moves Golden Bear Mine ahead

By Carole Belhumeur

Nestled deep within the rugged terrain of northern British Columbia, near Telegraph Creek is Wheaton River Minerals LTD's Golden Bear Mine. Golden Bear is owned and operated by Vancouver-based North American Metals Corp. An 86 per cent owned subsidiary of Toronto-listed

Wheaton River Minerals.

Canada's newest gold mine was officially inaugurated at a ceremony September 17th. Present were representatives from the government, Wheaton River Minerals, North American Metals and the Tahltan Joint Councils.

The Council includes members from

the nearby communities of Telegraph Creek, Dease Lake and Iskut. Also in attendance were Native Journal, CBC news and other media personnel, mining industry personnel and a representative from London based Barclays Bank.

The opening featured a customary Aboriginal feast of fresh salmon, rice,

supplies the trucks, personnel and heavy equipment for maintaining the access road into the mine. They also do on-site work with the mining contractor, Pelly Construction.

"A message that I hope is going out to the business world is that we are approachable," said Chief Tashoots.

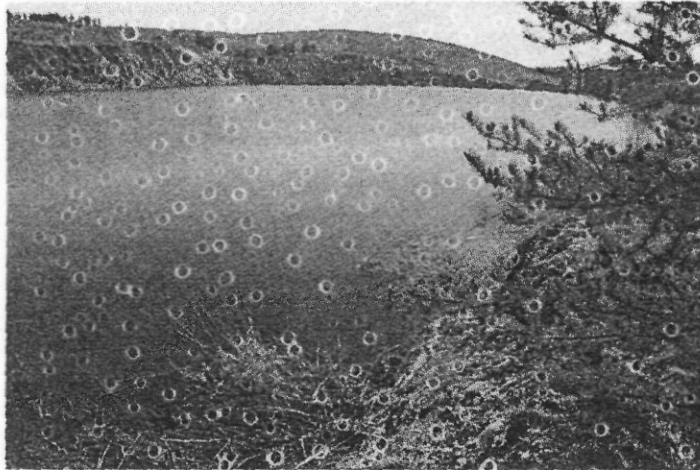
The Tahltans from nearby Telegraph Creek provide the gate security. "One-third of our workforce comes from the three neighboring communities of Telegraph Creek, Dease Lake and Iskut" commented Dennis Bergen Vice-President of Operations for Wheaton River Minerals.

Other local resources used at the project are Northern Lights Air Service and Telegraph Trails freight service.

The Tahltan Joint Councils will be looking to see if the proceeds of

BACK TO NATURE

FULFILLING ITS PROMISE OF RECLAMATION, COGEMA RESOURCES HAS SUCCESSFULLY RETURNED THE "D" PIT AT CLUFF LAKE BACK TO NATURE.



THERE'S MORE TO MINING THAN WHAT'S UNDER THE SURFACE!

Saskatchewan is home to the largest mines and highest grades of uranium anywhere in the world. But there's more to mining than what we find under the surface. It's the people on site and off — on the equipment

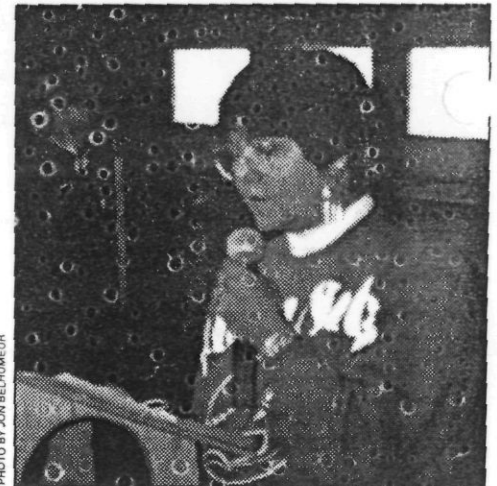


Ian McDonald, Chairman and Chief Executive Officer of Wheaton River Minerals

moose stew, bannock and other traditional cuisine.

After the feast Ian McDonald, Chairman and Chief Executive Officer, of Wheaton River Minerals gave a speech thanking everyone for coming and thanking the Tahltan communities for their contributions to the project. Chief Yvonne Tashoots and Tahltan Projects Manager, Pat Etzerza spoke on behalf of their people.

"As a result of cooperation ..."



Chief Yvonne Tashoots of the Tahltan Joint Council

resources extracted from their

One of the most significant exploration deals in BC's mining history

By Carole Belhumeur

Kenrich Mining Corporation is an advanced exploration company based in Vancouver, British Columbia. In June of 1997, Kenrich and Prime Resources Group Inc. entered into an agreement that has been described within the mining community as one of the most significant deals in British Columbia's mining history.

This is also one of the largest dollar deals that has ever been done between a major and a junior.

"It represents about a \$34.5 million total package. It gives our junior company a carried interest on the balance. If they should go all the way, they will end up with 70 per cent and Kenrich 30 per cent carried in the Prime Block. They have the right as part of a back in clause that they would end up with 50 per cent, where Kenrich is 50 per cent carried of the Kenrich Block. We'll pay back any cost out of production," explained Ken Trociuk, President/CEO at Kenrich.

HOMESTAKE

HOMESTAKE MINING COMPANY A PROUD MINING HERITAGE

Merging tradition with innovative exploration and mining technology, Homestake intends to take the lead as we move into the future.

If you would like to join us, we invite you to submit your property to Homestake Mining Company.

CORPORATE OFFICE

650 California Street, San Francisco, CA 94108
Tel: (415) 981-8150 • Fax: (415) 397-5025
Contact: Bill Lindqvist

Homestake Canada Inc.
1109 - 1055 W. Georgia St.
P.O. Box 11115
Vancouver, B.C. V6E 3P3
Tel: (604) 684-2345
Fax: (604) 684-9831
Contact: Carl Edmunds
Dave Kuran

Homestake Exploration, Reno
Suite 112-605 Eoxington Way
Sparks, Nevada 89434
Tel: (702) 358-5609
Fax: (702) 358-5588
Contact: Ron Parratt/Bill Wright

Minera Homestake Chile S.A.
Pedro de Valdivia 0193
Piso 4, Santiago
Chile
Tel: (562) 231-7103
Fax: (562) 231-8047
Contact: A. James Macdonald

