

## PIEBITER PROPERTY (Au, W, Cu, Mo, Ag)

### Fact Sheet, January 2006

- Location** • Thirteen kilometers southeast of Bralorne, British Columbia, Canada. Reference NTS map 92J10, 50°52'N Lat., 122°37'W Long., MinFile 092JNE043 and 092JNE145.
- Access** • The property is accessible by travelling south from Goldbridge on the main Goldbridge-Bralorne road for 5.5 km; thence by logging road along the north side of Cadwallader Creek southeast for 19 km; thence by dirt track along Piebiter Creek into the property.
- Land Package** • Six MTO mineral claim covering 2,764 hectares in the Lillooet Mining Division.
- Ownership** • John A. Chapman (50%) and KGE Management Ltd. (50%). Gerald G. Carlson is the President and major shareholder of KGE Management Ltd.
- Completed Exploration** • Gold was first discovered in the Bralorne-Pioneer camp as placer in 1863 and in lode vein deposits in 1897. Total production from high-grade veins in the district has exceeded 4.2 million ounces of gold.
- First recorded work on the Piebiter property was in the early 1930's when an adit reportedly contained a 21 m width of 4.3 g/tonne gold, with samples from trenching and various adits grading up to 8 oz/ton gold.
- In 1943, the Chalco/Lower Piebiter tungsten-copper zone was discovered. Drill testing occurred in 1969 and again in 1979-80.
- In the early 1980's, the Chopper silver vein was discovered, with a strike length of 2,400 m and selected grab samples up to 1,585 g/tonne silver.
- During the late 1980's, Hudson Bay Exploration and Development carried out mapping and sampling; Armeno Resources Inc. and Trans Atlantic Resources Inc. ("Armeno Group") acquired the property and completed geological, geophysical and geochemical surveys.
- 1986-88: Armeno Group completed 6,368 m of core drilling and 139 m of underground development. Four target zones were explored – Piebiter, Chopper, Standard and Chalco. On the Piebiter Zone, drilling outlined a zone 15 to 35 m wide and potentially in excess of 700 m strike length. Gold grades in 11 core holes range from 0.45 to 0.65 g/tonne gold, with best values of 2.01 g/tonne gold over 9 m and 4.77 g/tonne gold over 1.5 m.
- 1989-90: An IP survey and 1,286 m of reverse circulation drilling was completed during the early winter months.
- Resources** • No resource calculations have been conducted on the property.
- Area Production** • At 1971, when production ceased, the Bralorne-Pioneer was the most prolific gold camp in British Columbia history. The production is summarized below:
- | Mine     | Period    | Production (tons) | Gold Grade (oz/ton) |
|----------|-----------|-------------------|---------------------|
| Bralorne | 1932-1971 | 5,474,000         | 0.52                |
| Pioneer  | 1914-1962 | 2,477,000         | 0.54                |
| Minto    | 1934-1940 | 89,000            | 0.20                |
| Wayside  | 1915-1937 | 43,000            | 0.13                |
- Geology** • The property lies along the southeast extension of a major gold-bearing structure, the Cadwallader break, a part of the regional Bralorne fault system. The oldest rocks in the area belong to the Pre-Permian Fergusson Group chert with some marble, schist, gneiss and hornfels, cut by younger greenstone. These are overlain by the Upper Triassic Cadwallader Group, consisting of greenstone (mafic volcanics), overlain by argillite and siltstone with local limestone and coarser clastic rocks. The Jurassic Taylor Creek Group consists mainly of coarse clastic sediments, believed to be derived from the Fergusson and Cadwallader Groups. Intrusive rocks include the Paleozoic Bralorne diorite, the Jura-Cretaceous President ultramafic rocks and the Cretaceous Coast Plutonic Complex. The main controls on gold mineralization in the district are the Bralorne-Cadwallader fault zone, proximity to serpentinitized alteration and possibly the Bralorne diorite intrusions. Alteration consists of carbonate and pyritization; gold shows a particular association with mariposite-bearing quartz-carbonate rocks (listwanite) along serpentinite contacts.
- Environment** • The deposit is located between 1,400 meters and 2,000 meters elevation along the south side of Piebiter Creek, on the northwest slopes of Royal Peak. A road was constructed for drill access to the Piebiter Zone in 1987.
- Potential** • The potential in the Piebiter Zone is for a bulk tonnage gold deposit. The local geologic environment is similar to the Bralorne and Pioneer Mines, with gold mineralization at or near the contact with altered ultramafic rocks. However, rather than being focused in a narrow quartz vein structure, the gold here is dispersed within the adjacent schists. Piebiter lies between the Chalco Zone to the northwest and the Chopper Vein to the southeast. The three zones may form a continuous mineralized belt, with the high temperature gold-tungsten Chalco Zone grading through the Piebiter Zone into the lower temperature Chopper silver vein. The Chopper Vein appears to exhibit strong continuity, with local shoots that thicken up to 5m. Given the mesothermal nature and indicated zoning of this mineralized trend, gold may occur in the Chopper Vein at depth and towards the northwest. In a professional report dated December 1986 independent consultants indicated that there was potential for a porphyry molybdenum target south of Piebiter Creek in the Royal zone.
- Status** • The Piebiter property is available for option. Contact John Chapman at 604-536-8356 (Email: [jacms1@telus.net](mailto:jacms1@telus.net)), or Gerald Carlson at 604-688-0833 (Email: [gcarlson@copper-ridge.com](mailto:gcarlson@copper-ridge.com)).



# Piebiter Property

**Chalco  
Skarn  
Zone**

**Core Drilling at Piebiter Gold Zone  
1987/88**

Chalco  
Skarn  
Zone  
(Au-W-Cu)

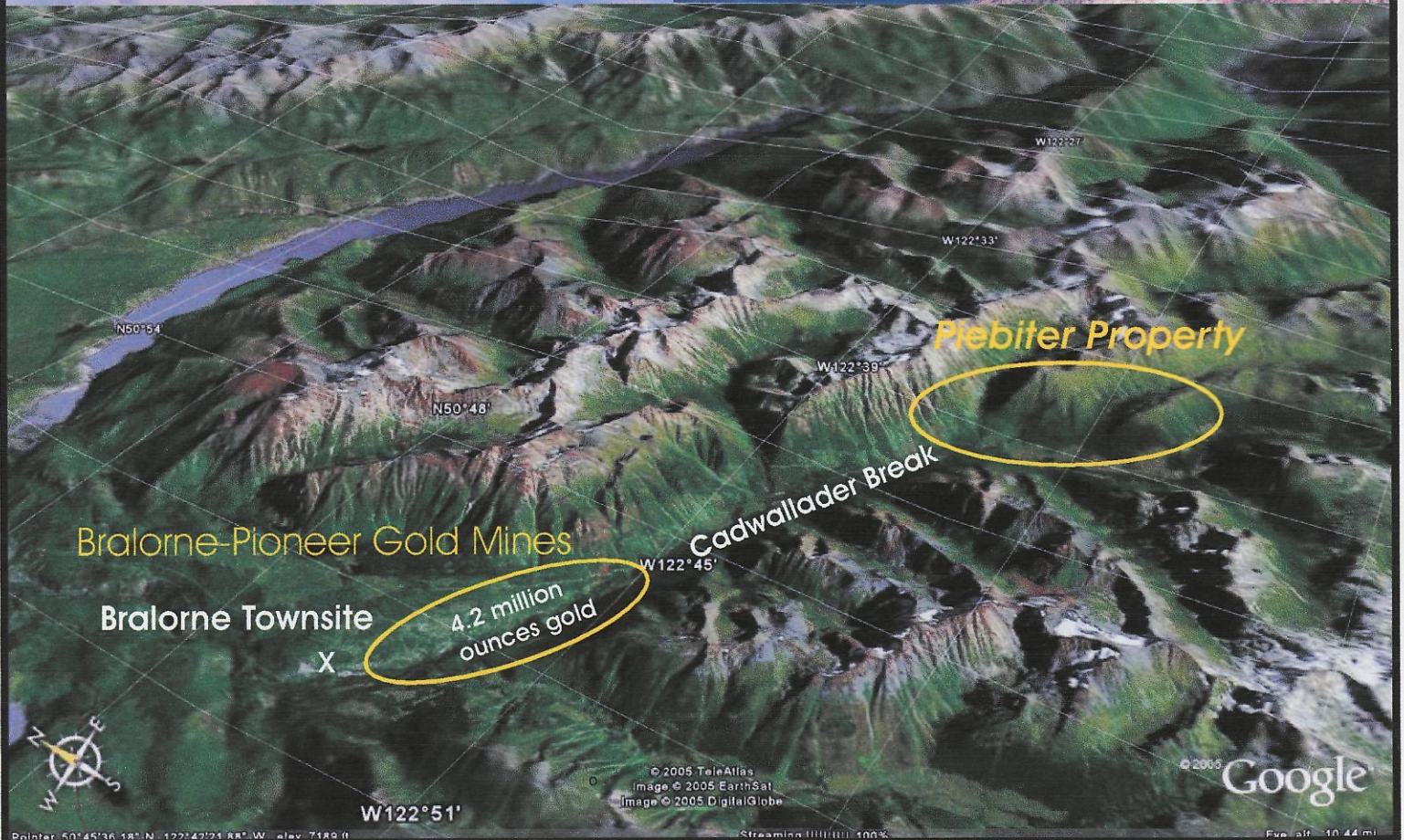
Piebiter  
Shear  
Zone  
(Au-Ag)

**Piebiter Property Main Access Road, 2003**

**Bralorne/Pioneer Mines**

**Chalco  
Skarn  
Zone**

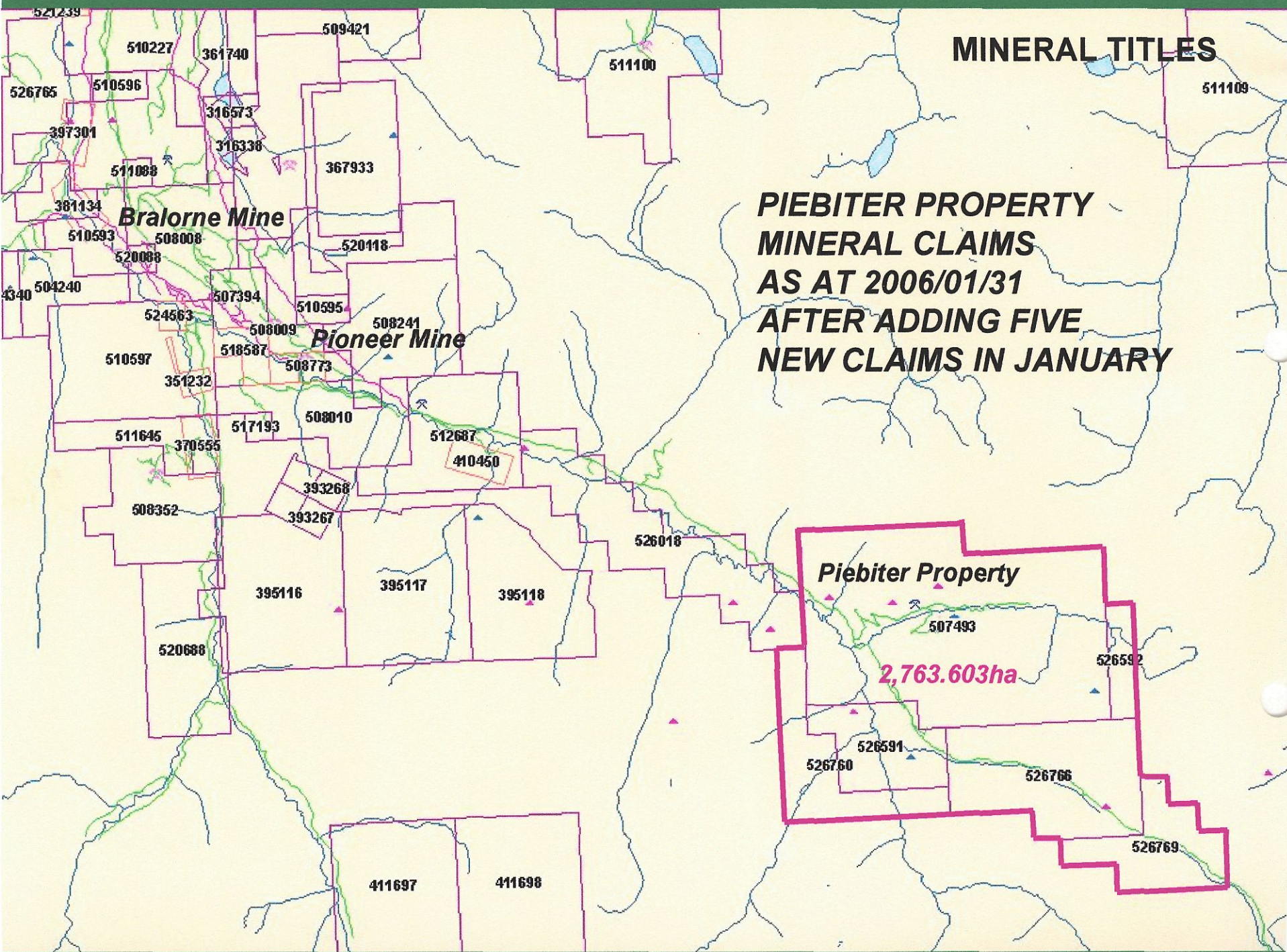
**Photo from Piebiter Zone  
Toward Bralorne/Pioneer Mines  
1987**





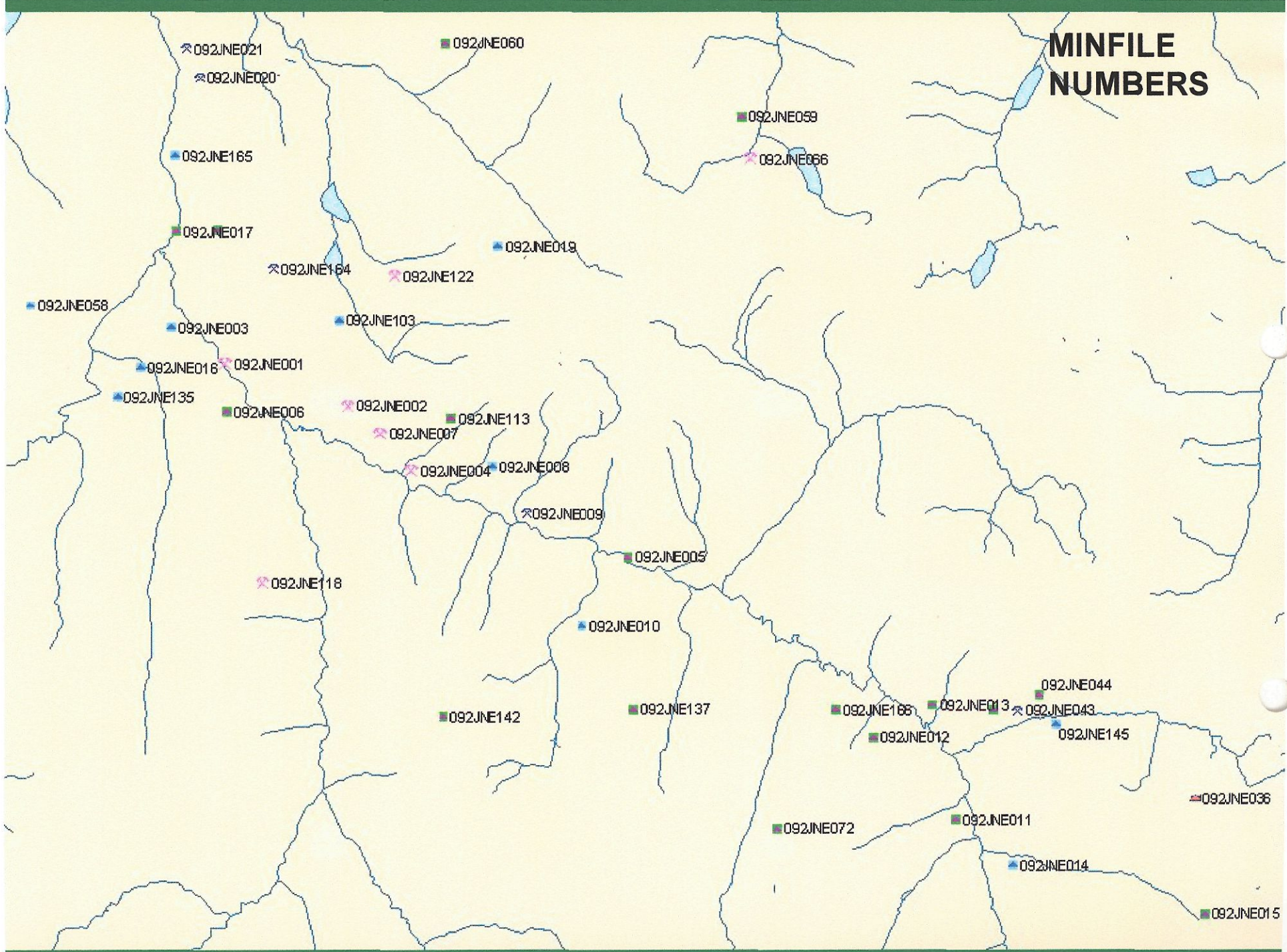
**MINERAL TITLES**

**PIEBITER PROPERTY  
MINERAL CLAIMS  
AS AT 2006/01/31  
AFTER ADDING FIVE  
NEW CLAIMS IN JANUARY**



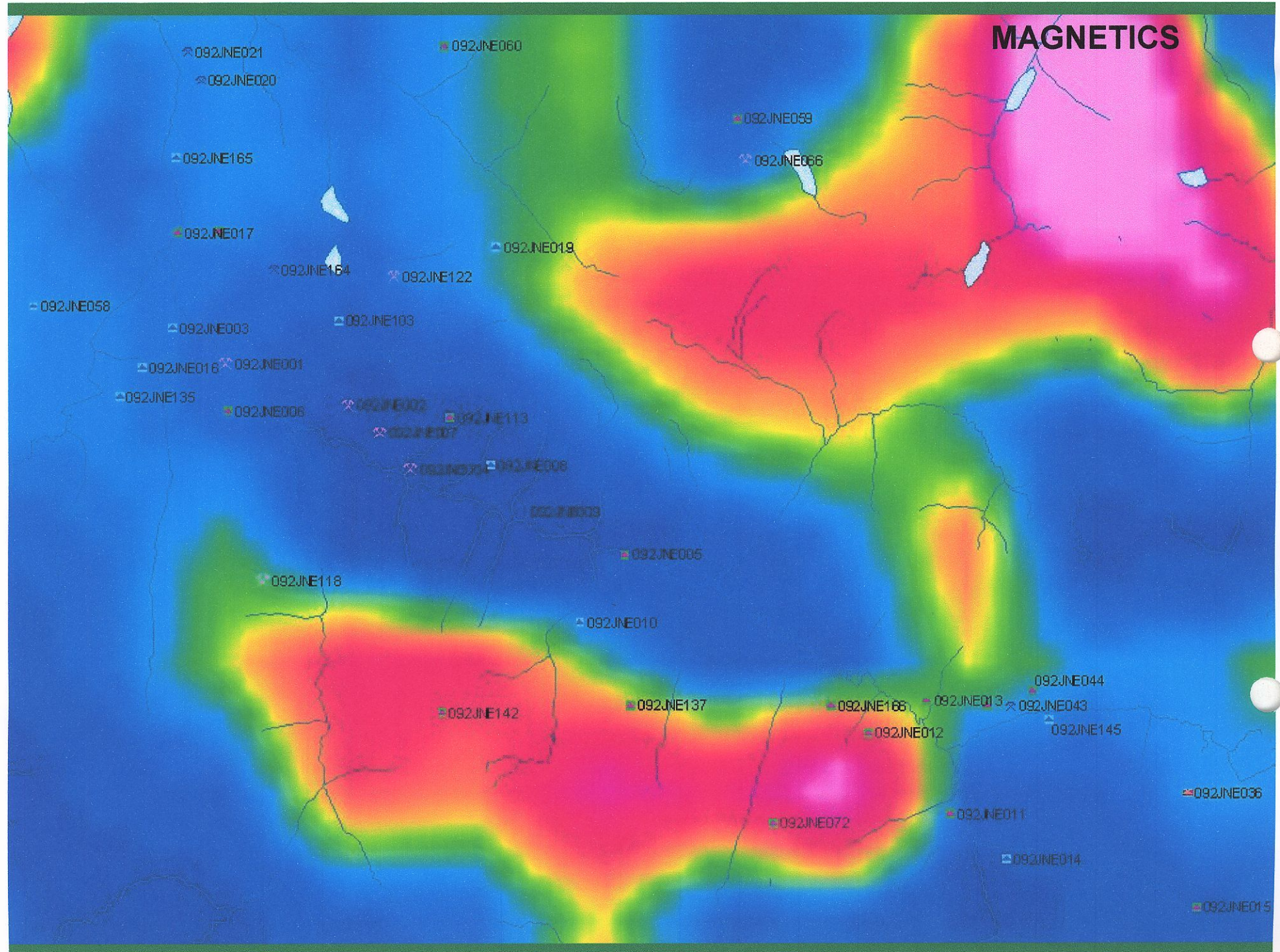


# MINFILE NUMBERS



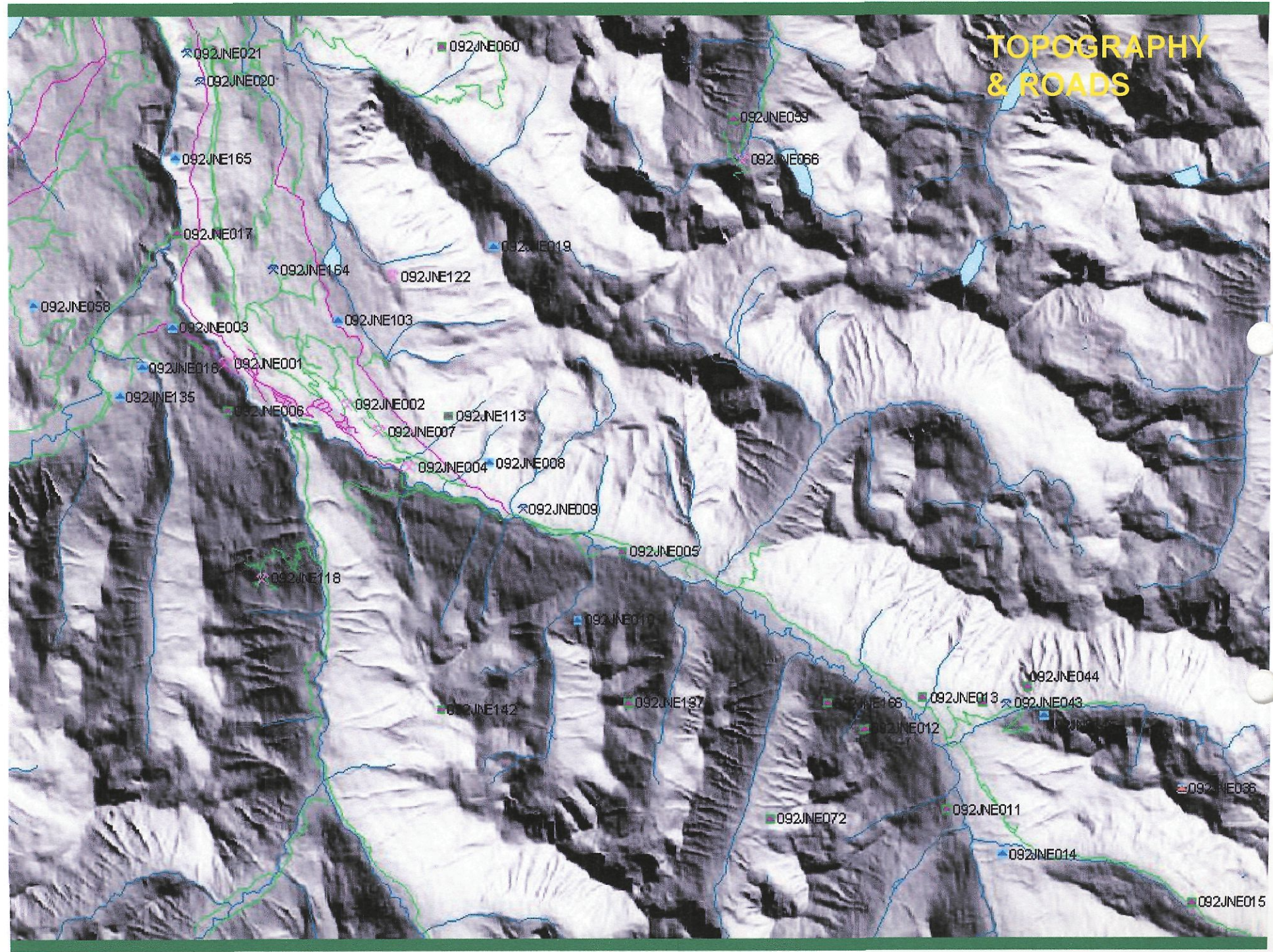


# MAGNETICS





# TOPOGRAPHY & ROADS

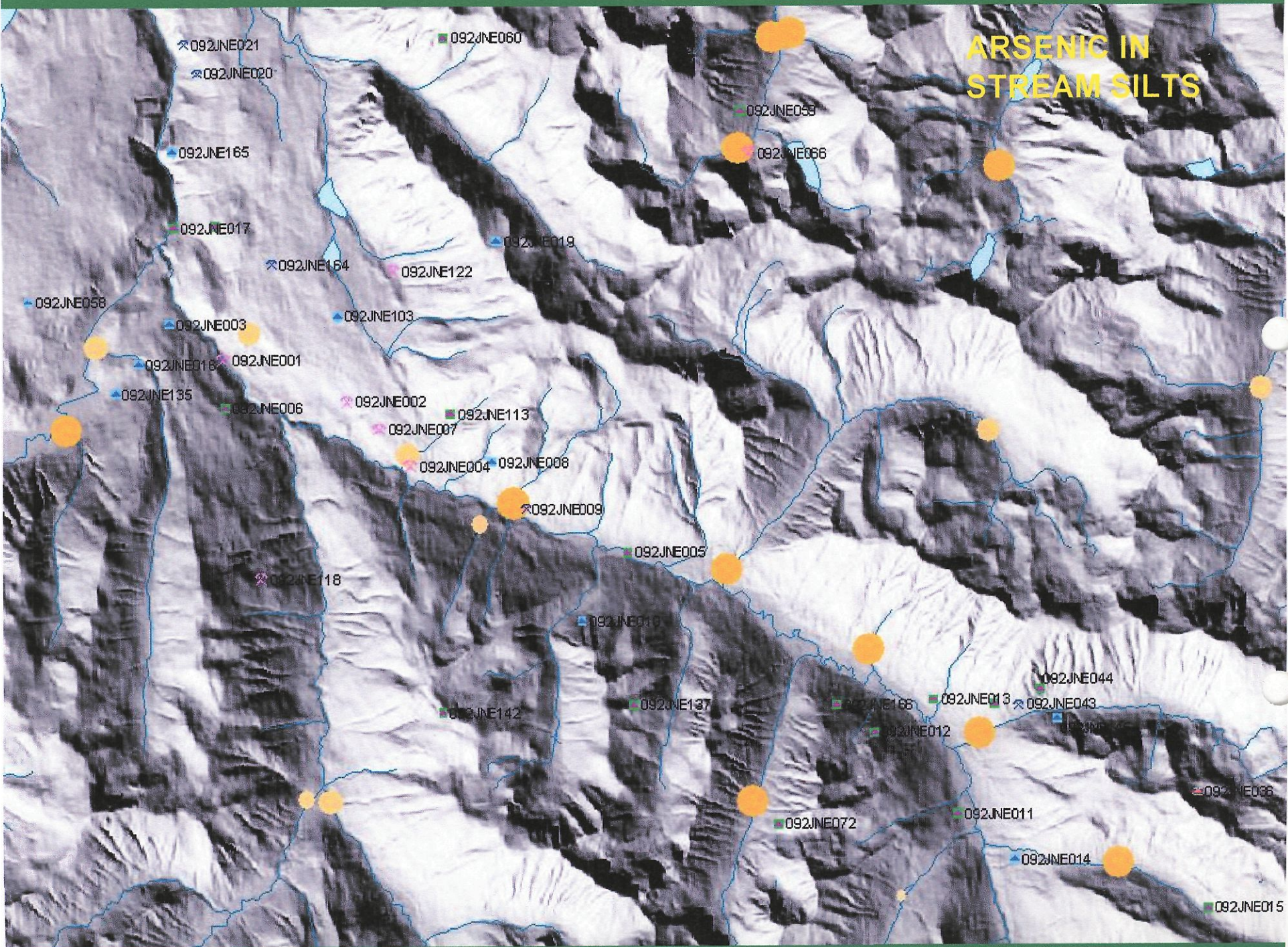






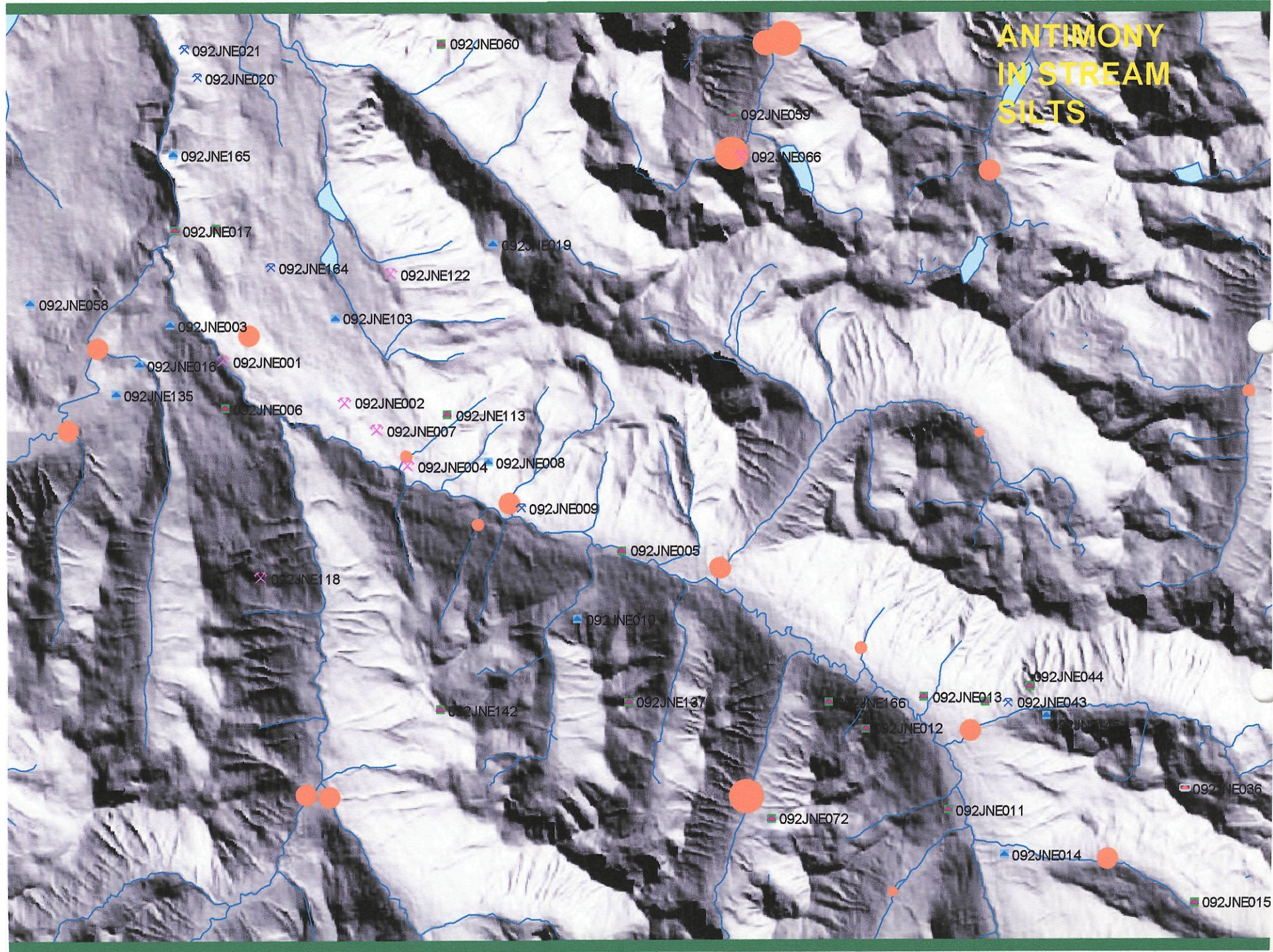


# ARSENIC IN STREAM SILTS





# ANTIMONY IN STREAM SILTS





# GEOLOGY

Upper Triassic  
Coarse Clastic  
Sedimentary Rocks

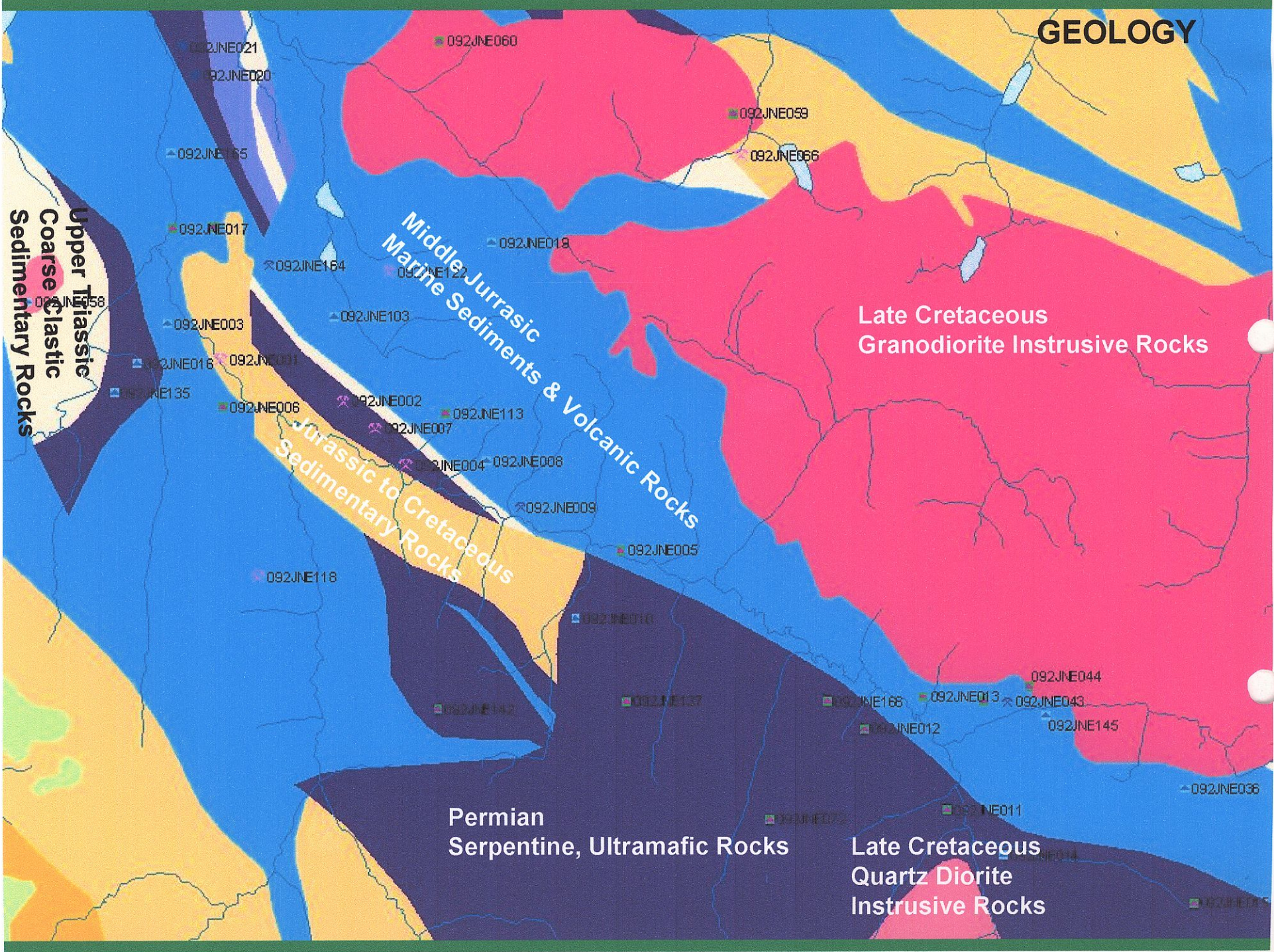
Middle Jurassic  
Marine Sediments & Volcanic Rocks

Jurassic to Cretaceous  
Sedimentary Rocks

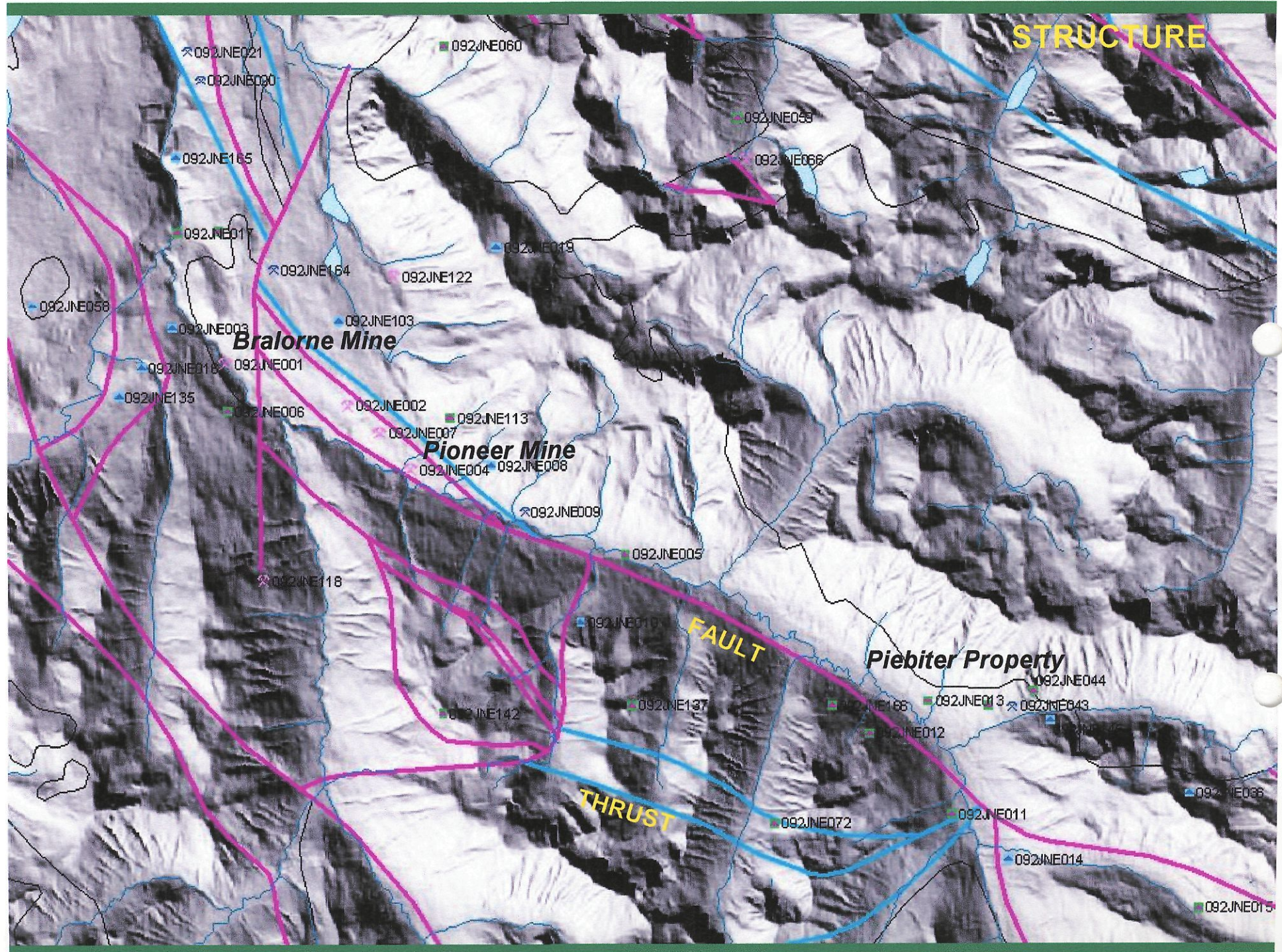
Late Cretaceous  
Granodiorite Intrusive Rocks

Permian  
Serpentine, Ultramafic Rocks

Late Cretaceous  
Quartz Diorite  
Intrusive Rocks









**Schroeter, Tom EMPR:EX**

---

**From:** John Chapman [jacms1@telus.net]  
**Sent:** Friday, February 03, 2006 9:54 AM  
**To:** Cathro, Mike EMPR:EX; Schroeter, Tom EMPR:EX  
**Subject:** FW: The Piebiter Gold Property, Bralorne, BC

Gentlemen,

Attached and following are updated promotion materials on Piebiter.

Cheers, John

---

**From:** John Chapman [mailto:jacms1@telus.net]  
**Sent:** January 31, 2006 12:12 PM  
**To:** John Anderson (john@purplefish.ca)  
**Cc:** Gerald Carlson (gcarlson@copper-ridge.com); Nick Ferris (nferris@jpgold.com)  
**Subject:** FW: The Piebiter Gold Property, Bralorne, BC

Hi John,

I enjoyed our telephone meeting this morning. As promised I am sending information on the Bralorne Camp and the Piebiter property.

Gerry Carlson and I are confident that there will be a lot of money directed at the Bralorne Camp in this gold bull market (that has been the case in every other cycle). The following email was sent to Nick Ferris on January 24<sup>th</sup>. Since then, Gerry and I have added another five mineral claims to the Piebiter property (now 2,764 hectares) in order cover other gold showings and old workings (all on, or adjacent to, the important Cadwallader Break of the Bralorne Fault system). The Piebiter is adjacent to the famous Bralorne Gold Camp that has produced ~4.2 million ounces from lode gold mines (mainly the Bralorne and the Pioneer), making it the largest gold producing Camp in British Columbia.

I trust that Nick will give our Piebiter a good look as I think that it would be a solid addition to J-Pacific Gold's adjacent properties at Bralorne. The Piebiter is Super Flow-Through and METC eligible giving the investor a much bigger bang for each dollar invested – in a world class gold camp with lots of blue sky potential.

I understand that one of the upcoming issues of International Mining (John Chadwick, Editor) will have a positive feature on BC mining. This publication should give a further "lift" to investors that have positioned themselves on worthy BC exploration programs, such as the famous Bralorne Gold Camp.

Cheers, John

---

**From:** John Chapman [mailto:jacms1@telus.net]  
**Sent:** January 24, 2006 3:17 PM  
**To:** Nick Ferris (nferris@jpgold.com)  
**Cc:** Gerald Carlson (gcarlson@copper-ridge.com)  
**Subject:** The Piebiter Gold Property, Bralorne, BC

Good Afternoon Nick,

It was good to see you at the Goldrea/Adanac reception.

Gerry Carlson and I have added to the size of our road accessible Piebiter gold property ~10km east of Bralorne, BC (see attached Fact Sheet). The property has had more than \$3 million spent on mineral exploration – much of

2006-02-03



it in the late 1980s. There are drill ready targets at and near the gold deposit and along the high-grade silver vein toward the north.

The Piebiter may make a good addition to J-Pacific Gold's adjacent Truax Property. If you are interested in optioning the Piebiter property we have a lot of Assessment Reports available for review.

Do not hesitate to call me at 604.536.8356, or Gerry at 604.816.3012.

Best regards,  
John Chapman