

## NORTHWEST COPPER PROPERTY

The NWC property mineralization consists of several copper-silver-gold high grade surface showings, coincidental with a circular magnetic anomaly of 800 meters radius. Porphyry intrusions with large gossans covering about a 4,000 meters zone, a large leach cap, and several outcrops carrying +1% copper and +100g silver are near or within the magnetic features.

A leached cap is found with argillic alteration and disseminated hematite in the altered Powell Creek volcanic rocks. Mineralized hornblende porphyry dykes are located in steeply dipping shear zones on the Tchaikazan fault area to the northeast.

Amazon ridge and Ravioli ridge with the Haho zones of enrichment are associated with the Tchaikazan structural zone hosting several Magnetic-EM anomalies.

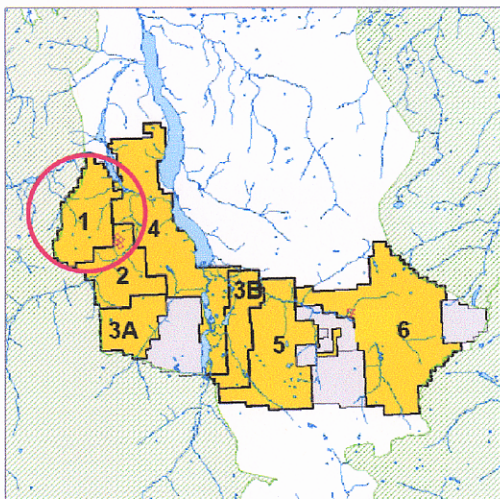
The Ravioli ridge area consists of a group of showings characterized by its altered gossans like appearance. The Haho showing located at the north end of Ravioli ridge, consist of copper in quartz carbonate veins which were trenched and sampled by Suncor in 1983.

The Amazon ridge consists of native copper and silver showings along with various copper mineralizations. The rocks in the northern part of the ridge are composed of porphyritic andesite and to the south are made of clastic sediments with disseminated hematite.

Mineralization in the area is not confined to any one rock type but appears to be structurally controlled.

The property has potential for:

- Bonanza type gold-silver,
- Large copper-silver-gold porphyries,
- Gold-silver massive sulphides deposits



June '06  
www.