

886198

V68 → Northern
Lights

Jan. 27/03



O P A L

B. C. C A N A D A

www.whitesailopal.com

Services Available

- Trenching/ripping
- Staking
- Sampling/Assessment
- Drilling (Cobra Drill)
- Breaking (Cobra Jackhammer)
- Portable Diamond Saw (12")
- Diamond Coring (4" x 14" depth)
- Alpine Rickshaw (350 lb load)
- Slabbing, Polishing Gemstones
- Report Preparation
- Economical Rates

Bruce Holden 250-335-1802

Randy Lord 604-522-5423

opal@whitesailopal.com

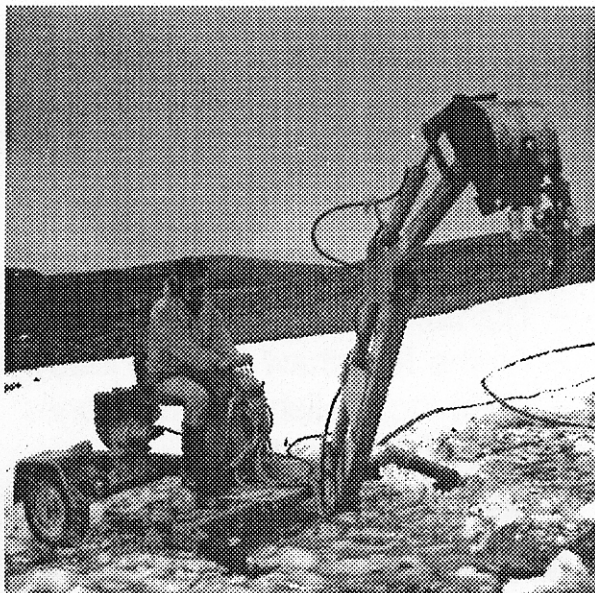
Helicopter-ready Excavator

- Ripping Force 4400 lbs.
- Fast Trenching to 6 ft.
- Lightweight - 850 lbs.
- Inexpensive to transport
- Highway/ATV Towable
- Self-powered/reliable
- Crosses snow/mud/alpine
- Economical Rates

Bruce Holden 250-335-1802

Randy Lord 604-522-5423

opal@whitesailopal.com



ALPINE DREAM MACHINE