

ATION

REPORT

172 BC 80061

1:20,000

1990

WEST LAKE

BLIND BAY

232 647

Dump

BLK. 15

BLK. 16

BLK. 28

BLK. 29

BLK. 27

HELI DROP ZONE

West Lake

BP

A. selenicum
 in 1st. - .88 ppm
 Granitic - .14 ppm

Wren

CASA

Samples

26

BC 80061

C.P. 12

BLK. X

HIDDEN BASIN

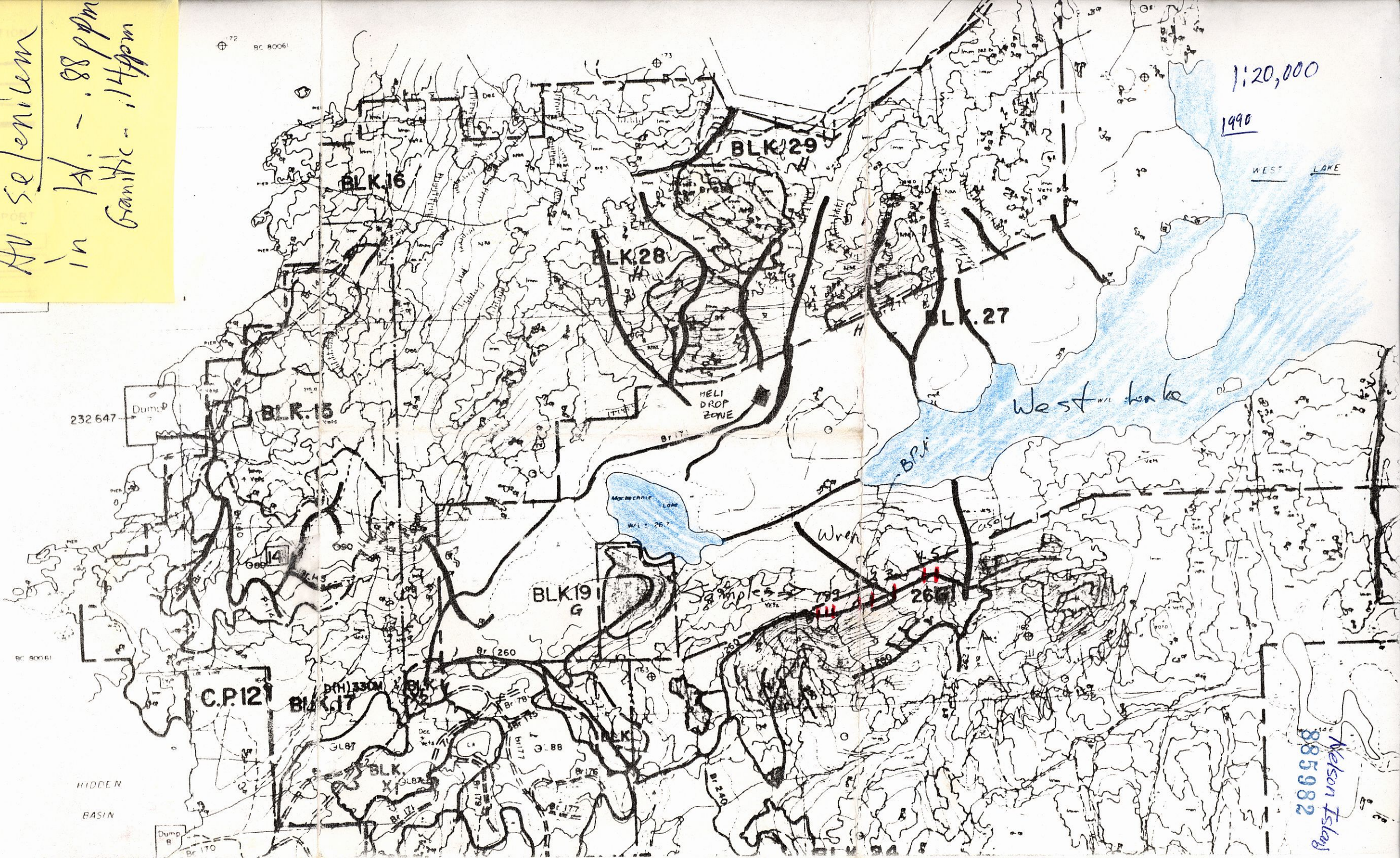
Dump B

Nelson Island
885982

Av. selenium
in 1st. - 88 ppm
Granitic - 14 ppm

172 BC 80061

1:20,000
1990



Nelson Island
885982



2500
500
80
75

gd
t, gd
gd

gd
t, gd
gd

gd
t, gd
gd

gd
t, gd
gd

gd
t, gd
gd

gd
t, gd
gd

gd
t, gd
gd

gd
t, gd
gd

gd
t, gd
gd

2500
1000
500

gd
t, gd
gd

gd
t, gd
gd

gd
t, gd
gd

gd
t, gd
gd

gd
t, gd
gd

gd
t, gd
gd

gd
t, gd
gd

gd
t, gd
gd

gd
t, gd
gd

2500
1000
500

gd
t, gd
gd

gd
t, gd
gd

gd
t, gd
gd

gd
t, gd
gd

gd
t, gd
gd

gd
t, gd
gd

gd
t, gd
gd

gd
t, gd
gd

gd
t, gd
gd

2500
1000
500

gd
t, gd
gd

gd
t, gd
gd

gd
t, gd
gd

gd
t, gd
gd

gd
t, gd
gd

gd
t, gd
gd

gd
t, gd
gd

gd
t, gd
gd

gd
t, gd
gd

2500
1000
500

gd
t, gd
gd

gd
t, gd
gd

gd
t, gd
gd

gd
t, gd
gd

gd
t, gd
gd

gd
t, gd
gd

gd
t, gd
gd

gd
t, gd
gd

gd
t, gd
gd

2500
1000
500

gd
t, gd
gd

gd
t, gd
gd

gd
t, gd
gd

gd
t, gd
gd

gd
t, gd
gd

gd
t, gd
gd

gd
t, gd
gd

gd
t, gd
gd

gd
t, gd
gd

2500
1000
500

gd
t, gd
gd

gd
t, gd
gd

gd
t, gd
gd

gd
t, gd
gd

gd
t, gd
gd

gd
t, gd
gd

gd
t, gd
gd

gd
t, gd
gd

gd
t, gd
gd

GSC
OF 611

92 G VANCOUVER

NEW WESTMINSTER LAND TRAIL DISTRICT
0 2 3 4 MILES

Francis Pt
Whitstone Is
Harney Pt

Sechelt
Peninsula

Sukinay
Lake

Sechelt
Peninsula



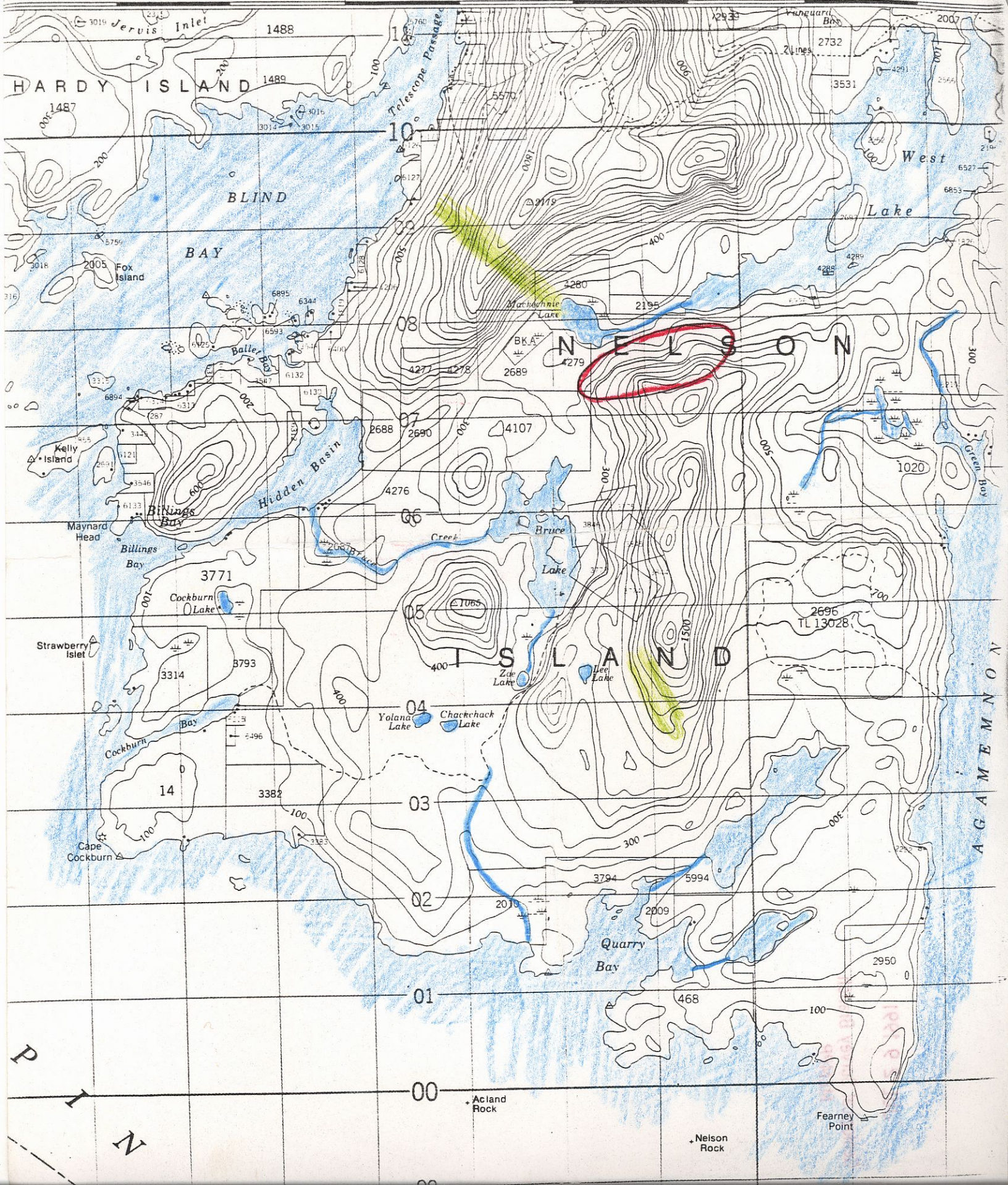


1:50,000

92 F/9E

EDITIO

13 14 15 16 17 18 19 20 21 05'



P
T
N

00 Acland Rock Nelson Rock Fearnley Point

MIDDLE JURASSIC (?)
 BOWEN ISLAND GROUP
 Greenstone; minor chert and greywacke.

Jb

LOWER JURASSIC
 HARBLEDOWN FORMATION
 Feldspathic wacke, siliceous argillite, phyllite,
 quartzite; minor limestone.

IJH

TRIASSIC

UPPER TRIASSIC
 KARMUTSEN FORMATION
 Basalt flows, pillow lava, pillow breccia, greenstone;
 minor limestone and shale.

UKK

PALEOZOIC (?)

gn

Gneiss, schist, amphibolite, agmatite.

PLUTONIC ROCKS

(IUGS Classification, 1973)

g

Muscovite granite

gd, gdu

Granodiorite; gdu (non-IUGS classification,
 from older reports)

gd'

Leucocratic varieties of granodiorite,
 tonalite and quartz diorite; minor β - granite

qd, qdu

Quartz diorite; qdu (non-IUGS classification,
 from older reports)

qd'

Leucocratic quartz diorite, minor granodiorite
 and tonalite

t

Tonalite, minor quartz diorite

qmd

Quartz monzodiorite, minor quartz diorite

md

Monzodiorite

d

Diorite, minor gabbro and quartz diorite

gb

Gabbro, minor diorite

Approximate limit of
 Geological boundary
 Attitude of bedding
 Attitude of foliation
 Outcrop examined;
 Fault (approximate)
 Fossil Locality

Dyke Swarms

Observed minerals

RADIOMETRIC AGES

Plutonic and volcanic
 Dykes

Minerals: h - hornblende
 z - zircon

System: K - potassium

Laboratory: All

(u)

(b)

Geology by J.A.
 1970-1974, including

W.H. M

W.R. E

H.H. E

J.A. F

N.L. (

Compiled by J.A.