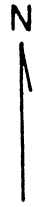


PLAN

• OLD
• L25N, 17W

P.D.H.
BOB 85-1
O -90°, 18.3m

TRENCH



• Rd. E, 1250m.

	Au oz/t.	Ag ppb	As ppm	Sb ppm	Hg ppb	
BOB 85-1						
5	<.2	30	9	350		ground
<5	<.2	10	<2	160		TILL
<3	.2	6	3	125		7.02m.
<5	.4	27	<2	80		CONG, LI
10	.4	30	6	150		CONG, LI, HE
5	<.2	4	<2	1300		" " "
5	.2	15	5	520		SAND, LI, HE
18.3m						

LAC MINERALS LTD.

BCB CLAIMS

P.D.H. BOB85-1

SCALE 1:400
N.T.S. 93B/13

JUNE 1985
FIG. N^o

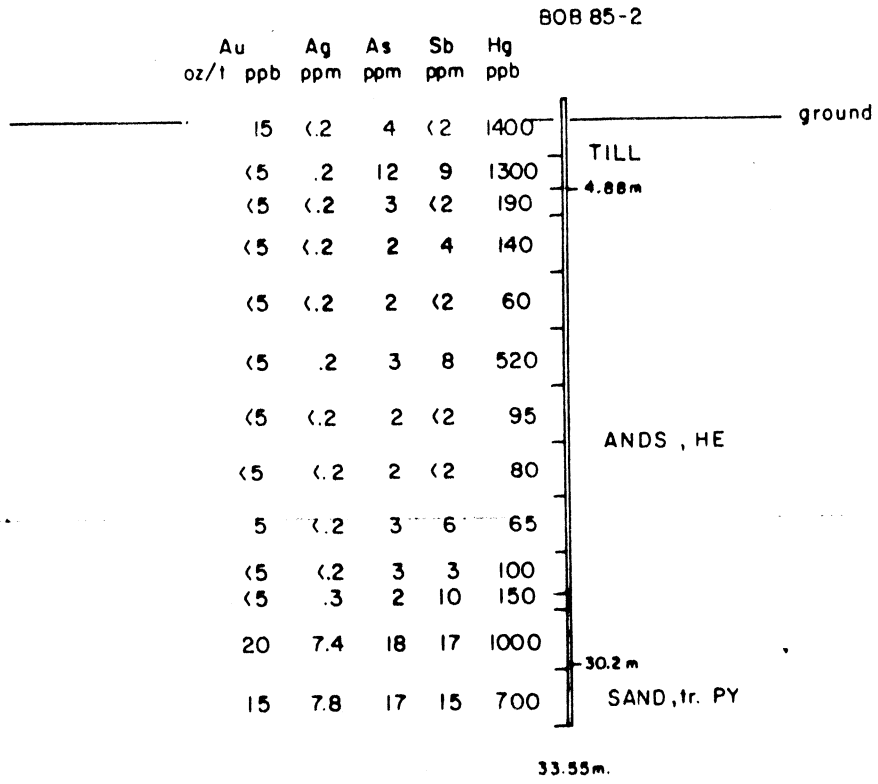
885971

PLAN

⊙ P.D.H.
BOB 85-2
-90°, 33.55m



• Rd E, 1350m.



LAC MINERALS LTD.
BOB CLAIMS
P.D.H. BOB 85-2

SCALE 1:400
N.T.S. 93 B/13

JUNE 1985
FIG. NO.

PLAN

P.D.H.
BOB 85-3
O -90°, 15.25 m.

• Rd E, 1450 m



BOB 85-3

Au	Ag	As	Sb	Hg	
oz/t.	ppb	ppm	ppm	ppb	
40	.4	425	25	700	ground
10	.2	60	14	190	TILL
<5	<.2	30	6	145	3.97 m.
10	.2	4	4	45	
15	<.2	3	4	15	ANDS, HE
<5	<.2	2	<2	30	

15.25 m.

LAC MINERALS LTD.

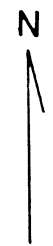
BOB CLAIMS

P.D.H. BOB 85-3

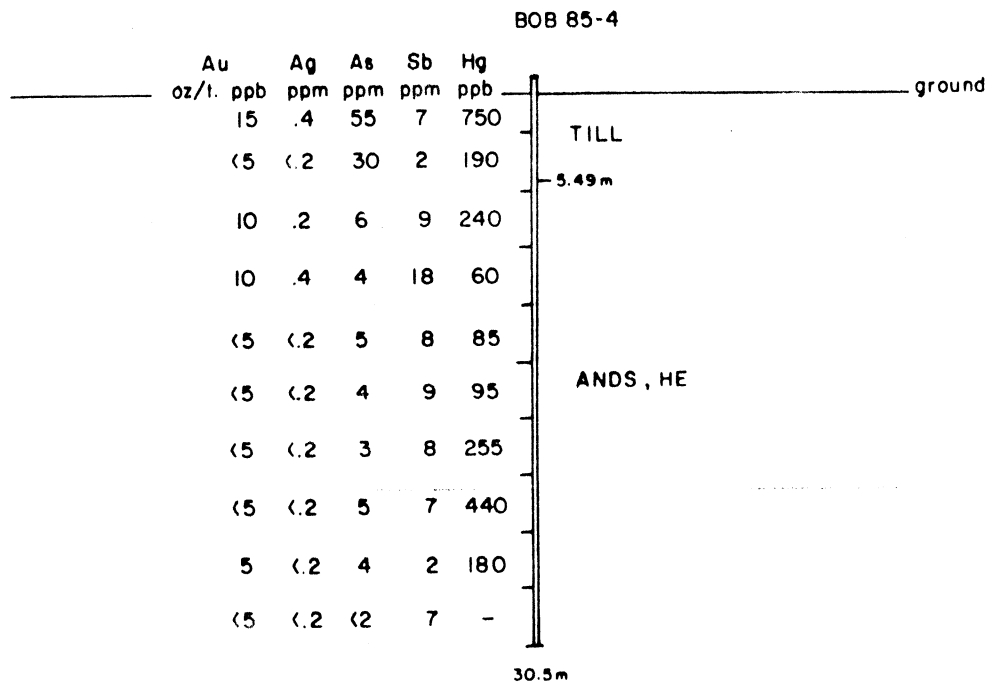
SCALE 1:400
N.T.S. 93B/13

JUNE 1985
FIG. NO.

PLAN



P.D.H.
BOB 85-4
-90°, 30.5 m
Rd E, 1550 m.



LAC MINERALS LTD.
BOB CLAIMS
P.D.H. BOB 85-4

SCALE 1:400
N.T.S. 93B/13
JUNE 1985
FIG. N9.

PLAN

P.D.H.
BOB 85-5
-90°, 15.25m O | • |

Rd E, 1650m.



BOB 85-5

Au	Ag	As	Sb	Hg	
oz/t.	ppb	ppm	ppm	ppb	
5	<.2	30	<2	135	ground
<5	<.2	10	5	200	TILL
10	<.2	6	3	40	5.2m
10	<.2	10	2	35	
5	<.2	5	6	35	ARGL
5	<.2	5	9	25	

15.25m.

LAC MINERALS LTD.

BOB CLAIMS

P.D.H. BOB 85-5

SCALE 1:400
N.T.S. 93B/13

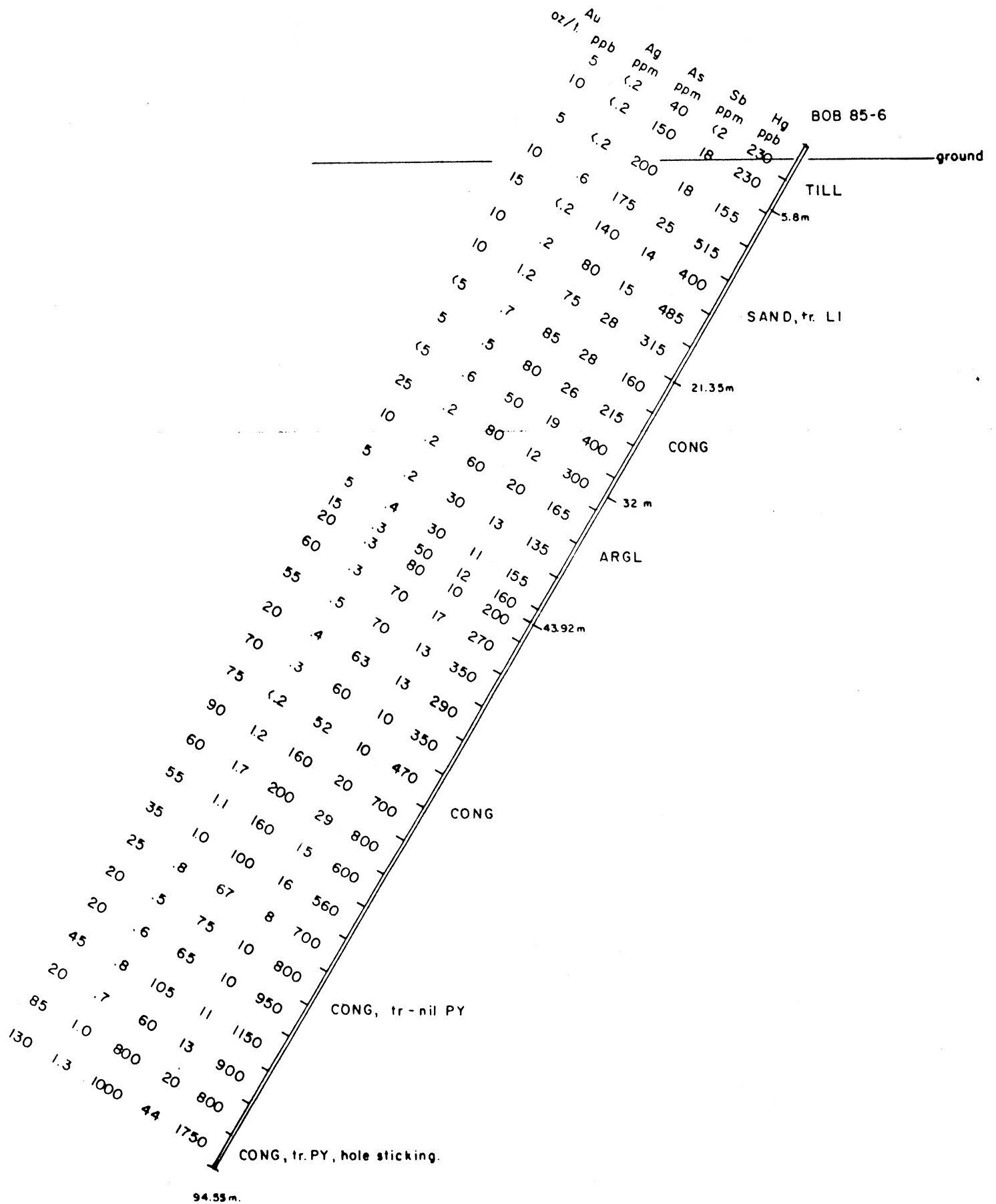
JUNE 1985
FIG. N°.

PLAN



P.D.H.
BOB 85-6
-60°, 268°, 94.55 m.

• Rd A, 2075 m



LAC MINERALS LTD.

BOB CLAIMS

P.D.H. BOB 85-6

SCALE 1:400
N.T.S. 938/13

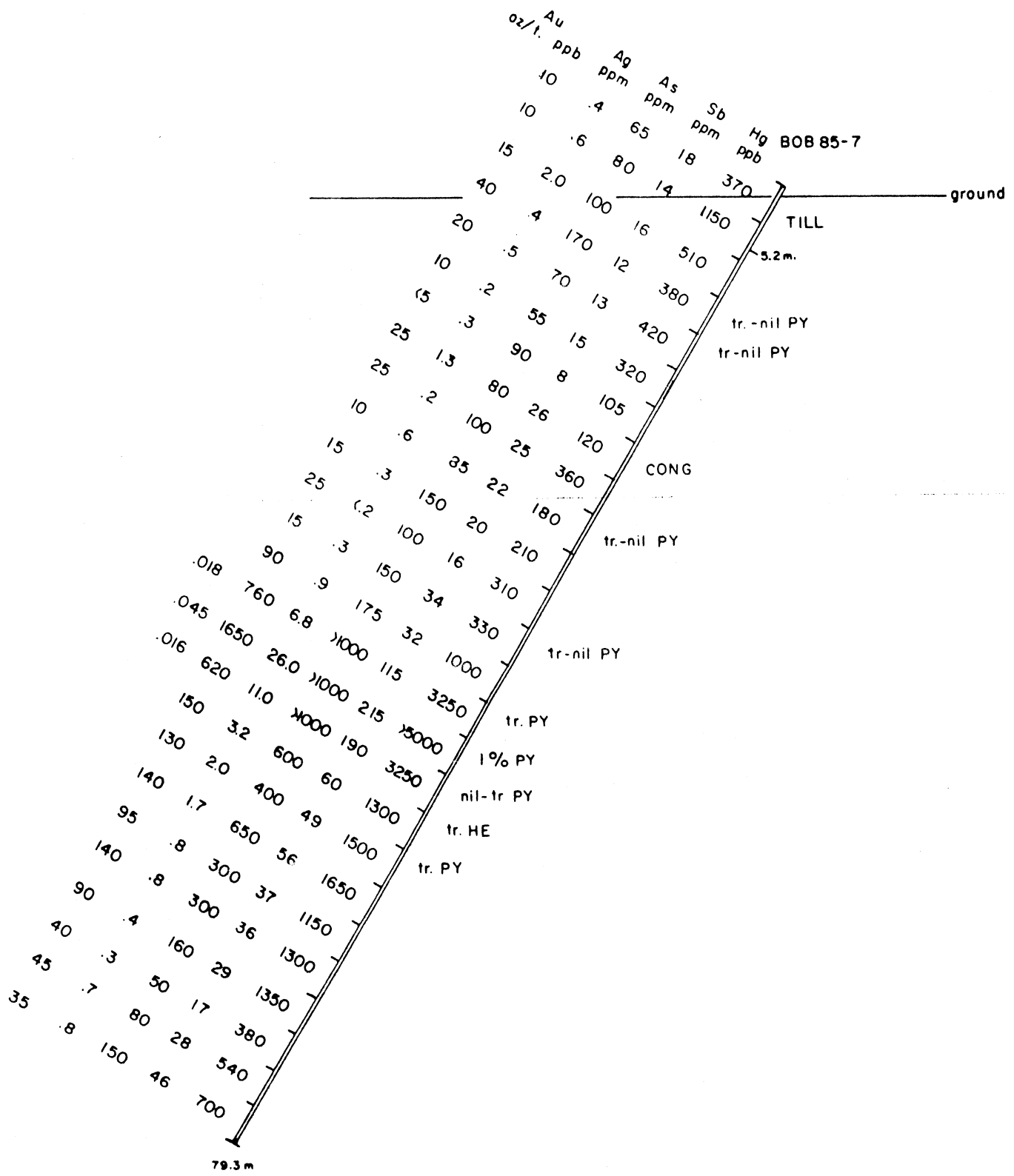
JUNE 1985
FIG. N°.

PLAN



50m N to L33N
23W

P.D.H.
BOB 85-7
-60°, 270°, 79.3 m.
Rd G, 768 m.



LAC MINERALS LTD.

BOB CLAIMS

P.D.H. BOB 85-7

SCALE 1:400
N.T.S. 938/13

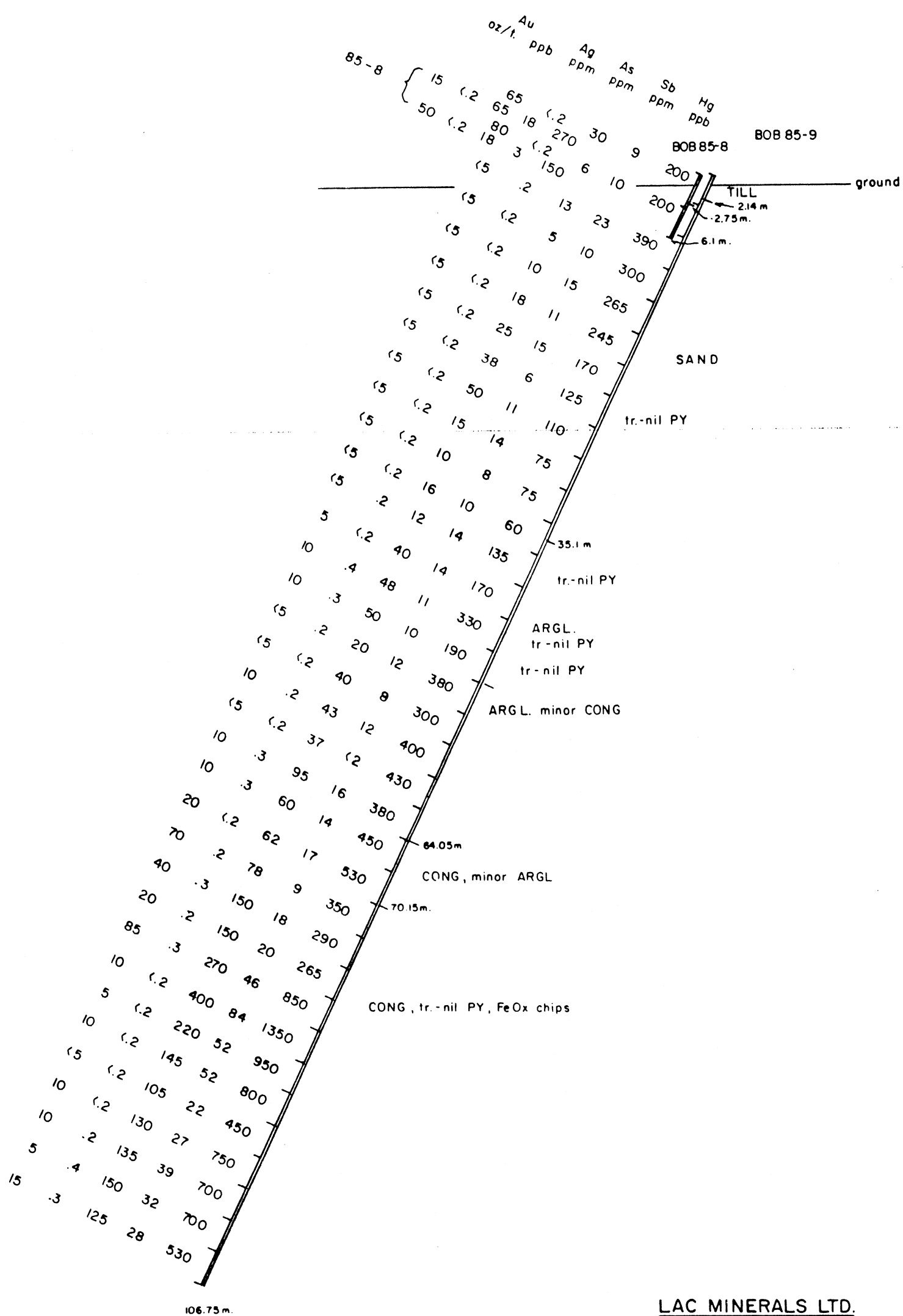
JUNE 1985
FIG. N°.

PLAN



P.D.H.
BOB 85-8
-64°, 266°, 6.1m.

P.D.H.
BOB 85-9
-65°, 266°, 106.8 m.



LAC MINERALS LTD.

BOB CLAIMS

P.D.H. BOB 85-8,9

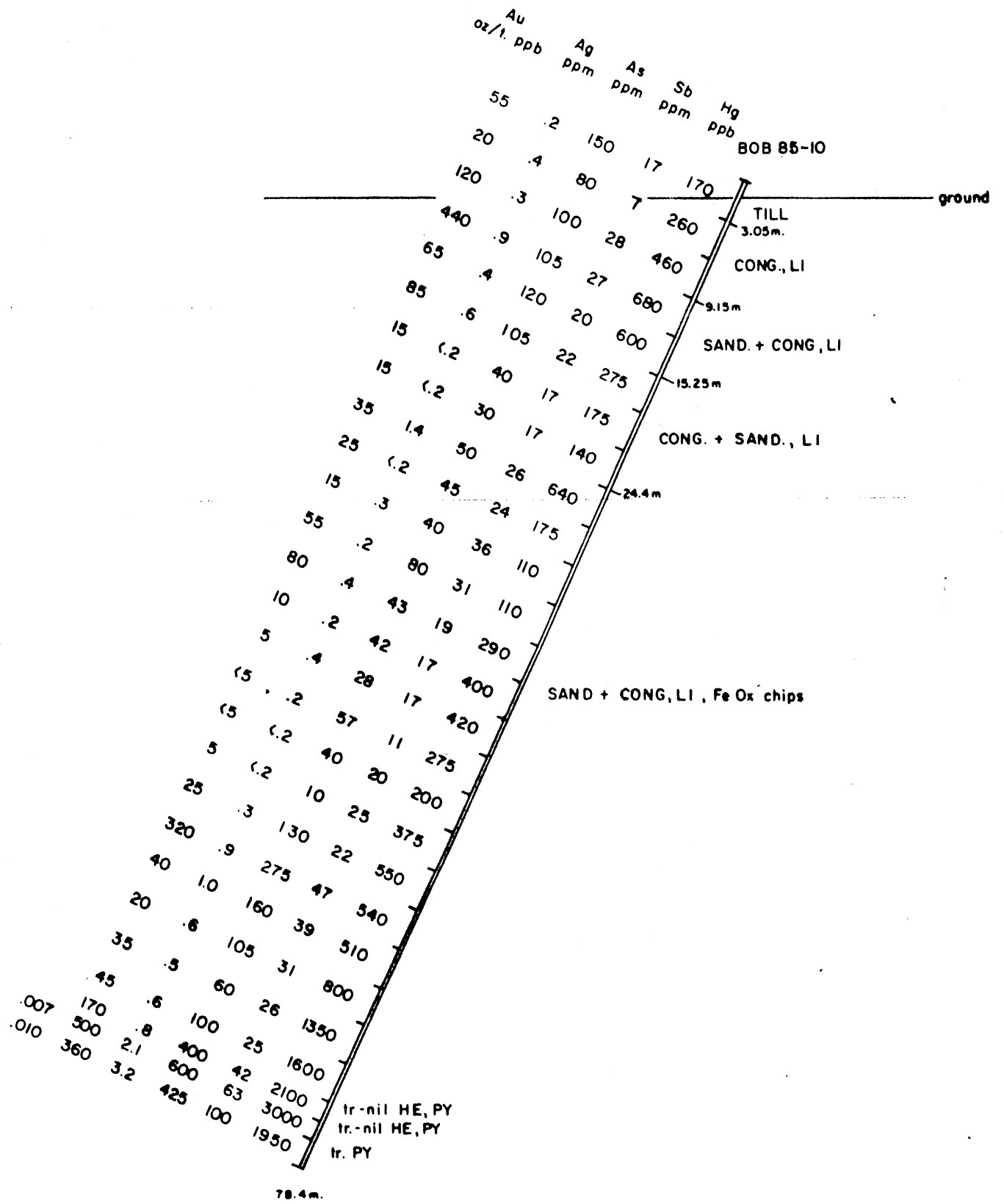
SCALE 1:400
N.T.S. 93B/13

JUNE 1985
FIG. N^o.

PLAN



P.D.H.
BOB 85-10
-66°, 270°, 78.4 m
Rd C, 285 m



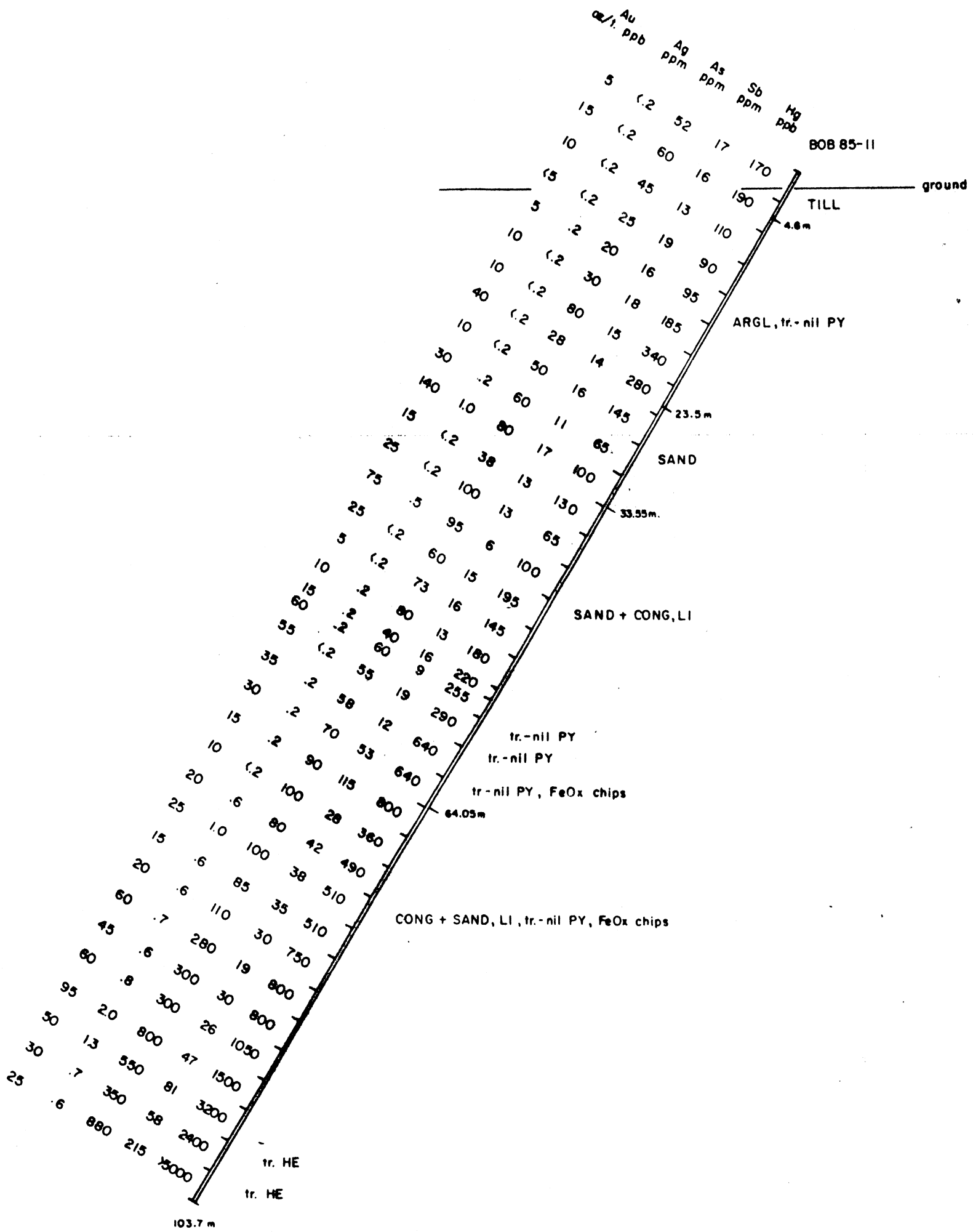
LAC MINERALS LTD.
BOB CLAIMS
P.D.H. BOB 85-10

SCALE 1:400 JUNE 1985
N.T.S. 93B/13 FIG. N^o.

PLAN



P.D.H.
BOB 85-11
-80°, 267°, 103.7m
Rd C, 125m



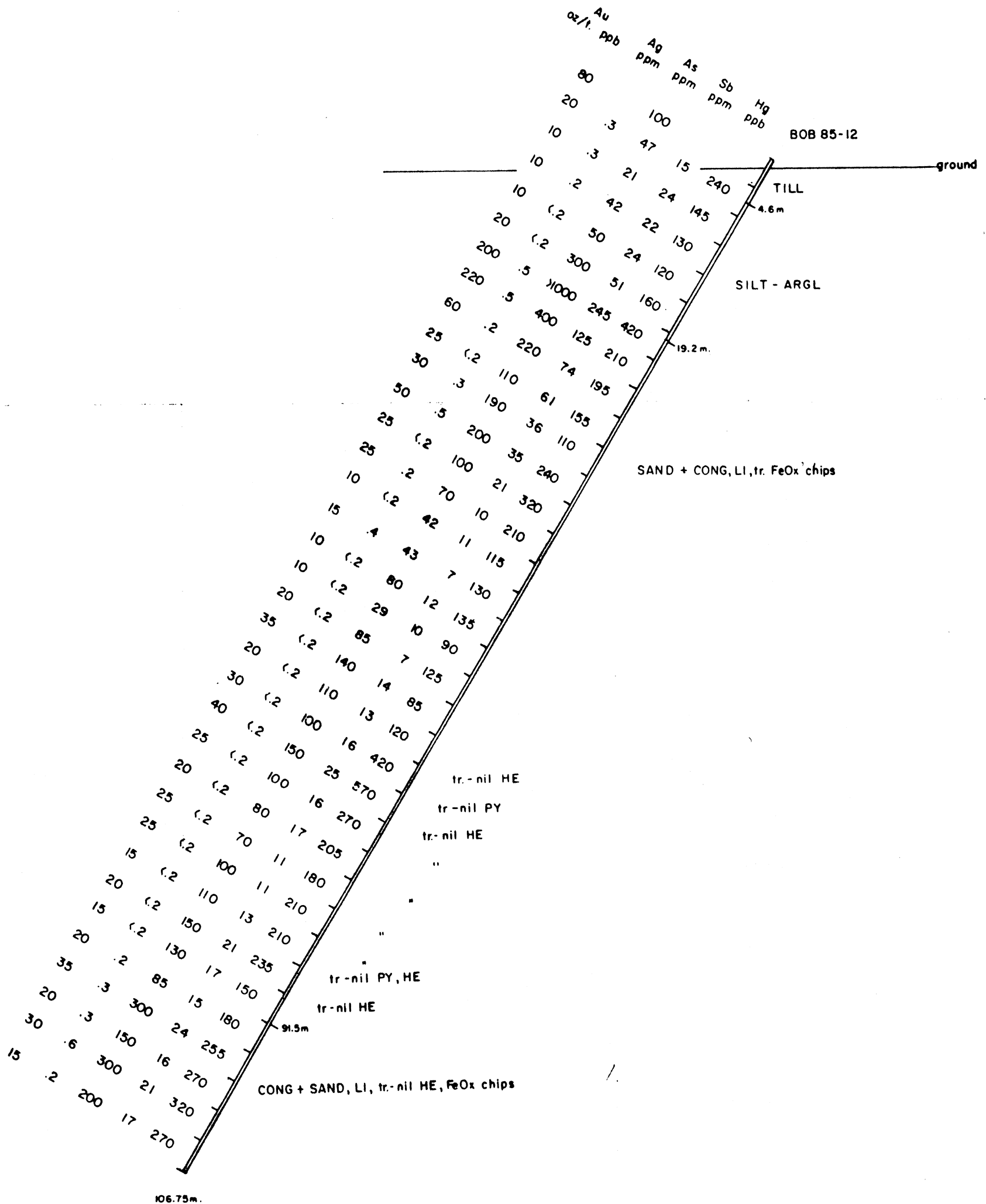
LAC MINERALS LTD.
BOB CLAIMS
P.D.H. BOB 85-II

SCALE 1:400
N.T.S. 98B/13
JUNE 1985
FIG. NO.

PLAN



P.D.H.
BOB 85-12
-60°, 265°, 106.8m
Rd C, 70m



LAC MINERALS LTD.

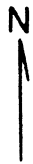
BOB CLAIMS

P.D.H. BOB 85-12

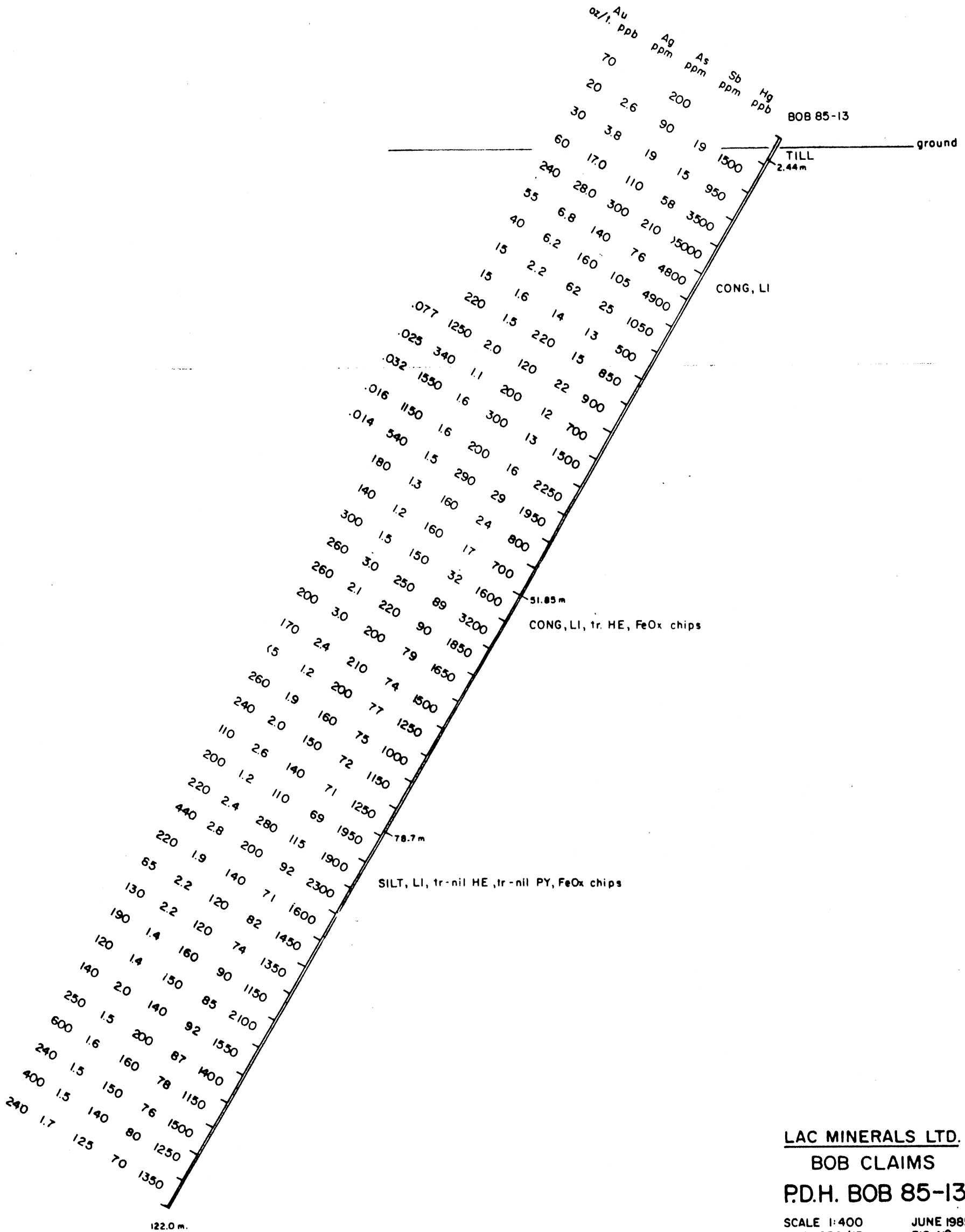
SCALE 1:400
N.T.S. 938/13

JUNE 1985
FIG. N°.

PLAN



P.D.H.
BOB 85-13
-60°, 267°, 122.0 m
Rd 8, 1319 m.



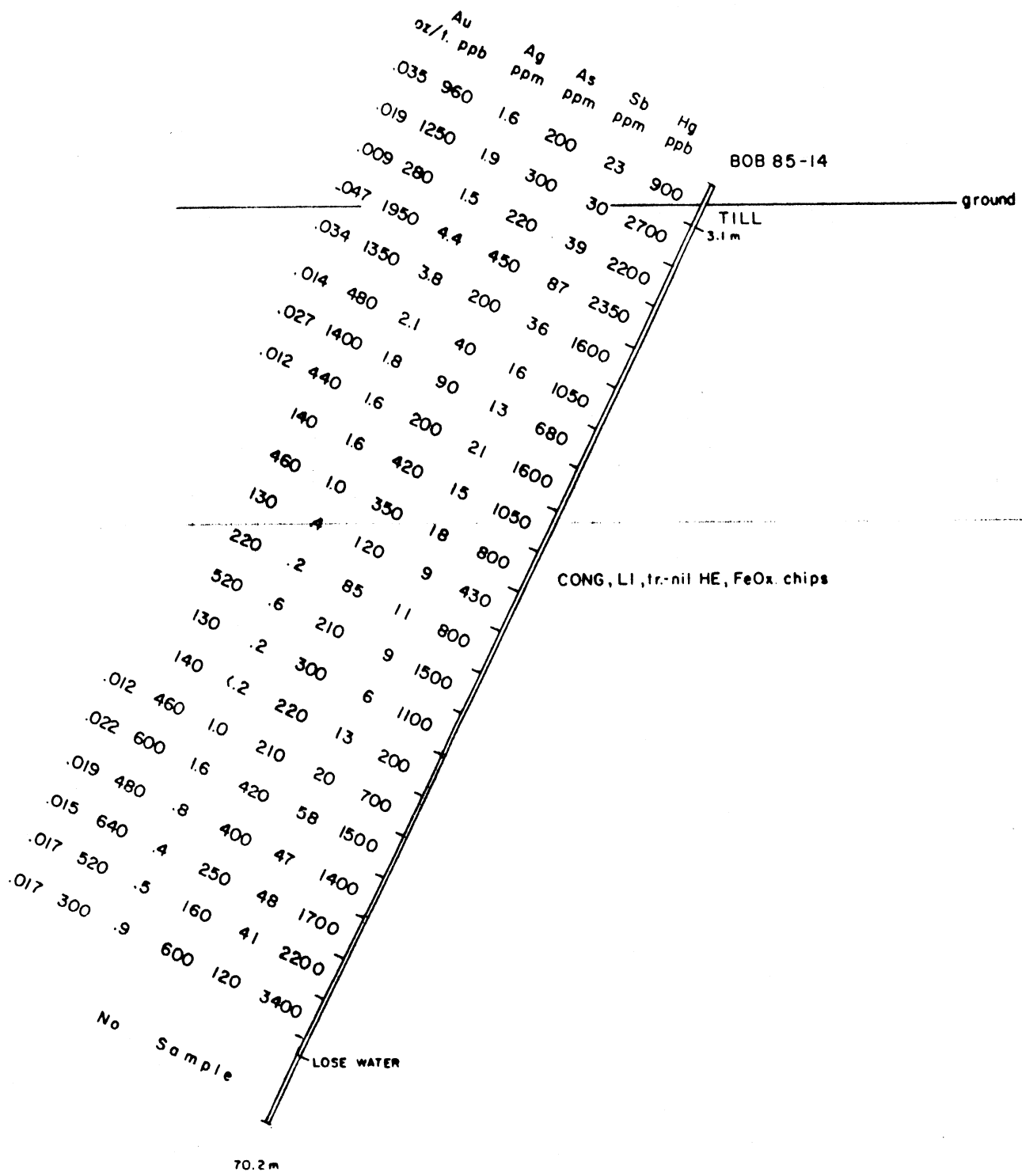
LAC MINERALS LTD.
BOB CLAIMS
P.D.H. BOB 85-13

SCALE 1:400
N.T.S. 938/13
JUNE 1985
FIG. NO.

PLAN



P.D.H.
BOB 85-14
-65°, 270°, 70.2 m
Rd B, N. End



LAC MINERALS LTD.

BOB CLAIMS

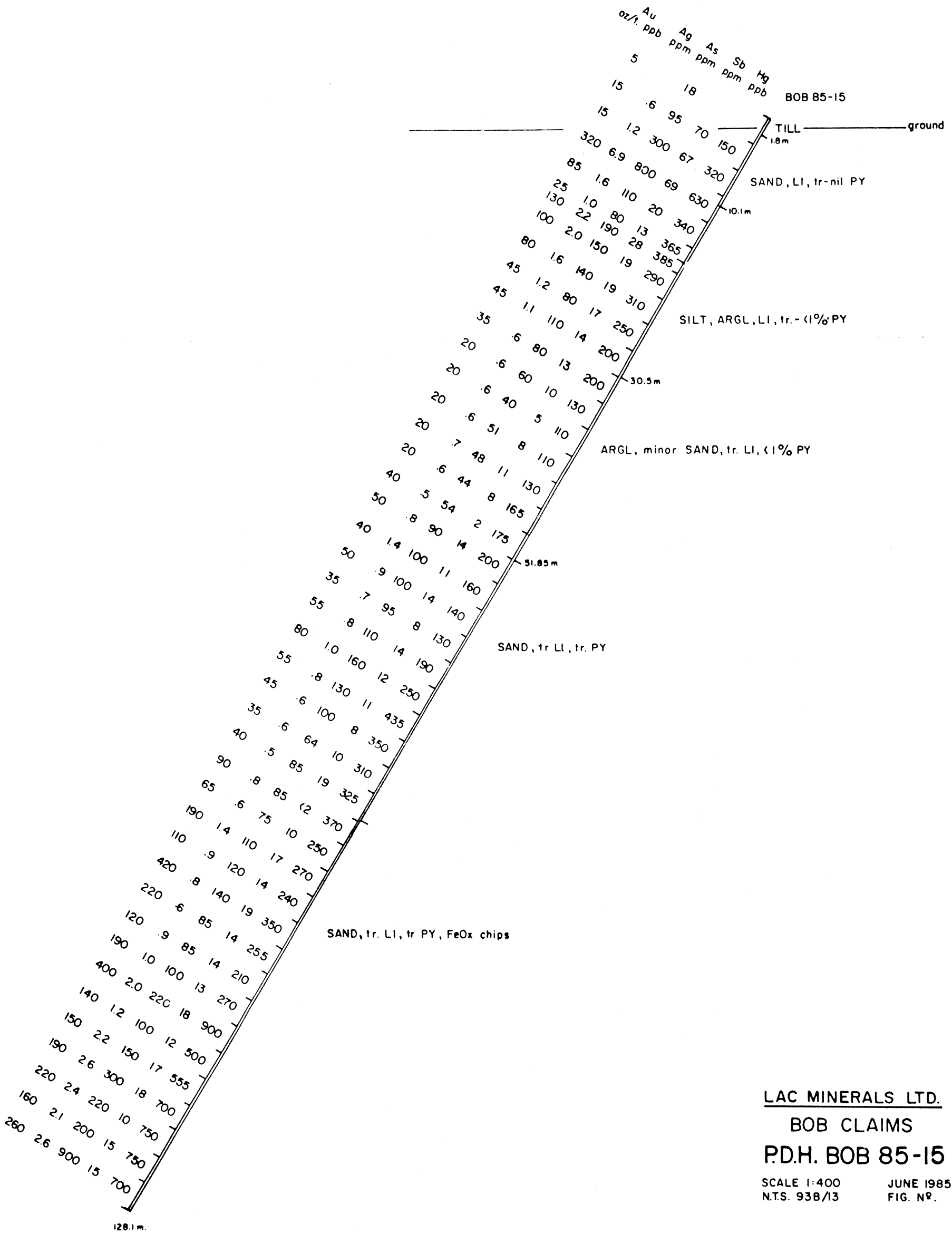
P.D.H. BOB 85-14

SCALE 1:400
N.T.S. 93B/13

JUNE 1985
FIG. N°.

PLAN
N

P.D.H.
BOB 85-15
-60°, 273°, 128.1 m.
Rd A, 1290m



LAC MINERALS LTD.

BOB CLAIMS

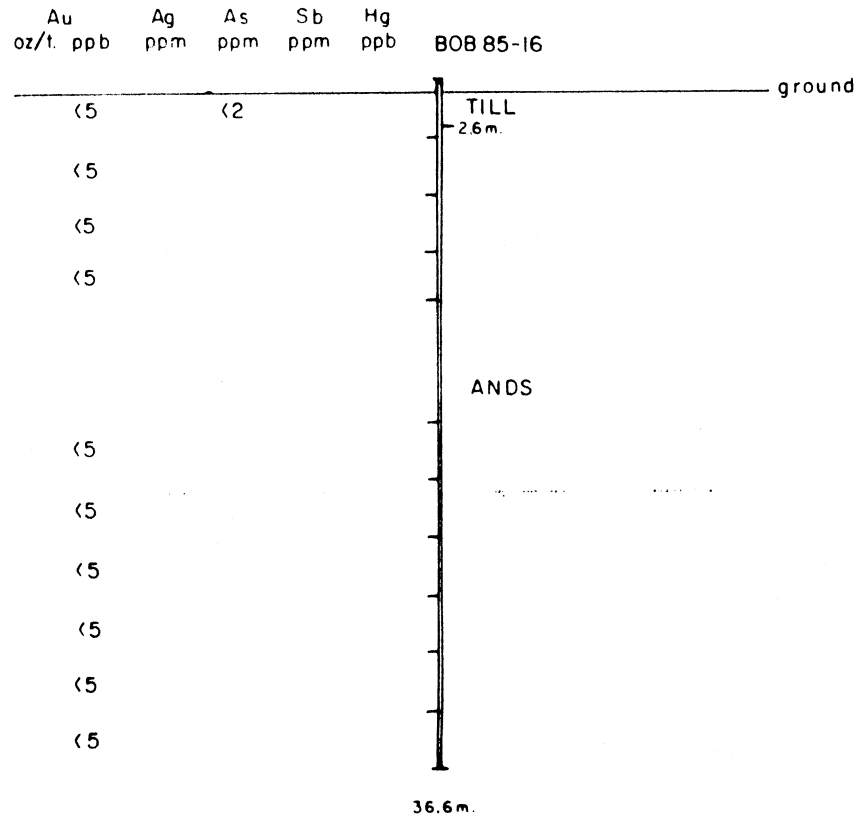
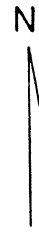
P.D.H. BOB 85-15

SCALE 1:400
N.T.S. 93B/13

JUNE 1985
FIG. N°.

PLAN

P.D.H.
 BOB 85-16
 ● -90°, 36.6 m
 Old Boezaeko Road
 and L55N, 21 + 77W

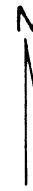


LAC MINERALS LTD.
 BOB CLAIMS
 P.D.H. BOB 85-16

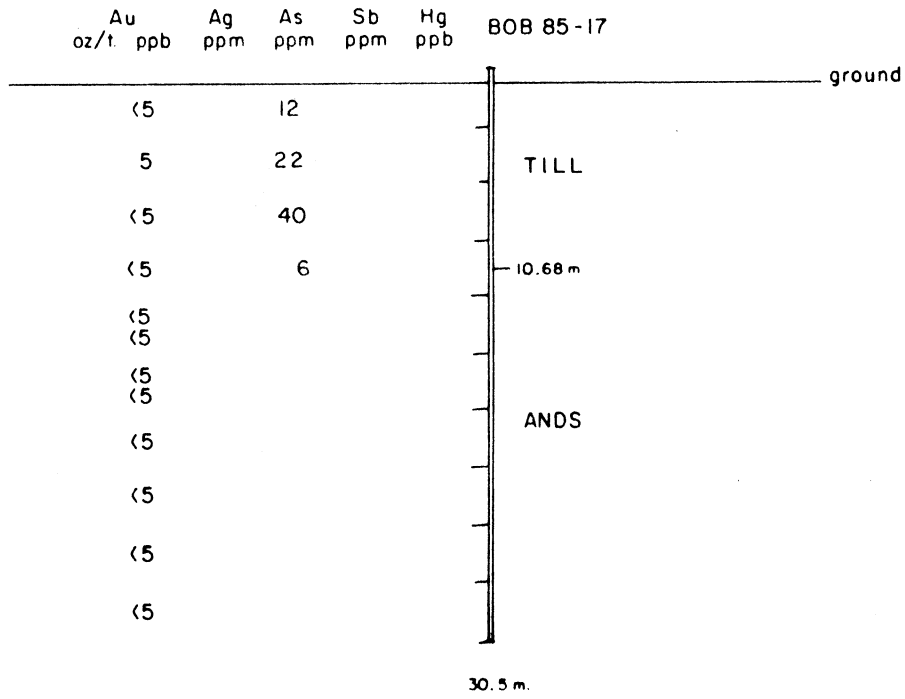
SCALE 1:400
 N.T.S. 93B/13

JUNE 1985
 FIG. NO.

PLAN



P.D.H.
BOB 85-17
⊙ - 90°, 30.5 m
Old Beezoeko Road
35 m, 320° From L55N, 19+50W



LAC MINERALS LTD.
BOB CLAIMS
P.D.H. BOB 85-17

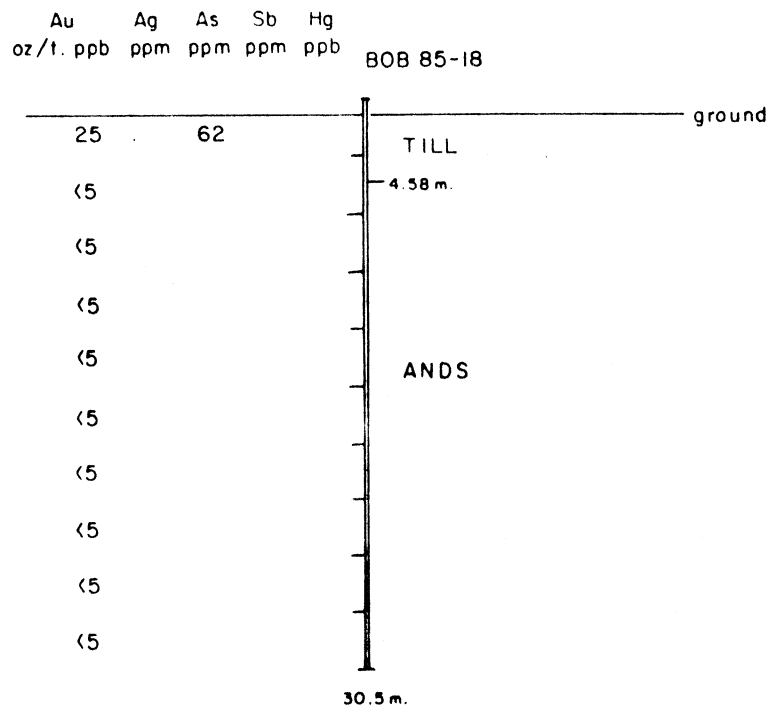
SCALE 1:400
N.T.S. 938/13

JUNE 1985
FIG. N^o.

PLAN

P.D.H.
BOB 85-18
● -90°, 30.5 m

Old Boezeke Road,
150 m. E. of BOB 85-17



LAC MINERALS LTD.

BOB CLAIMS

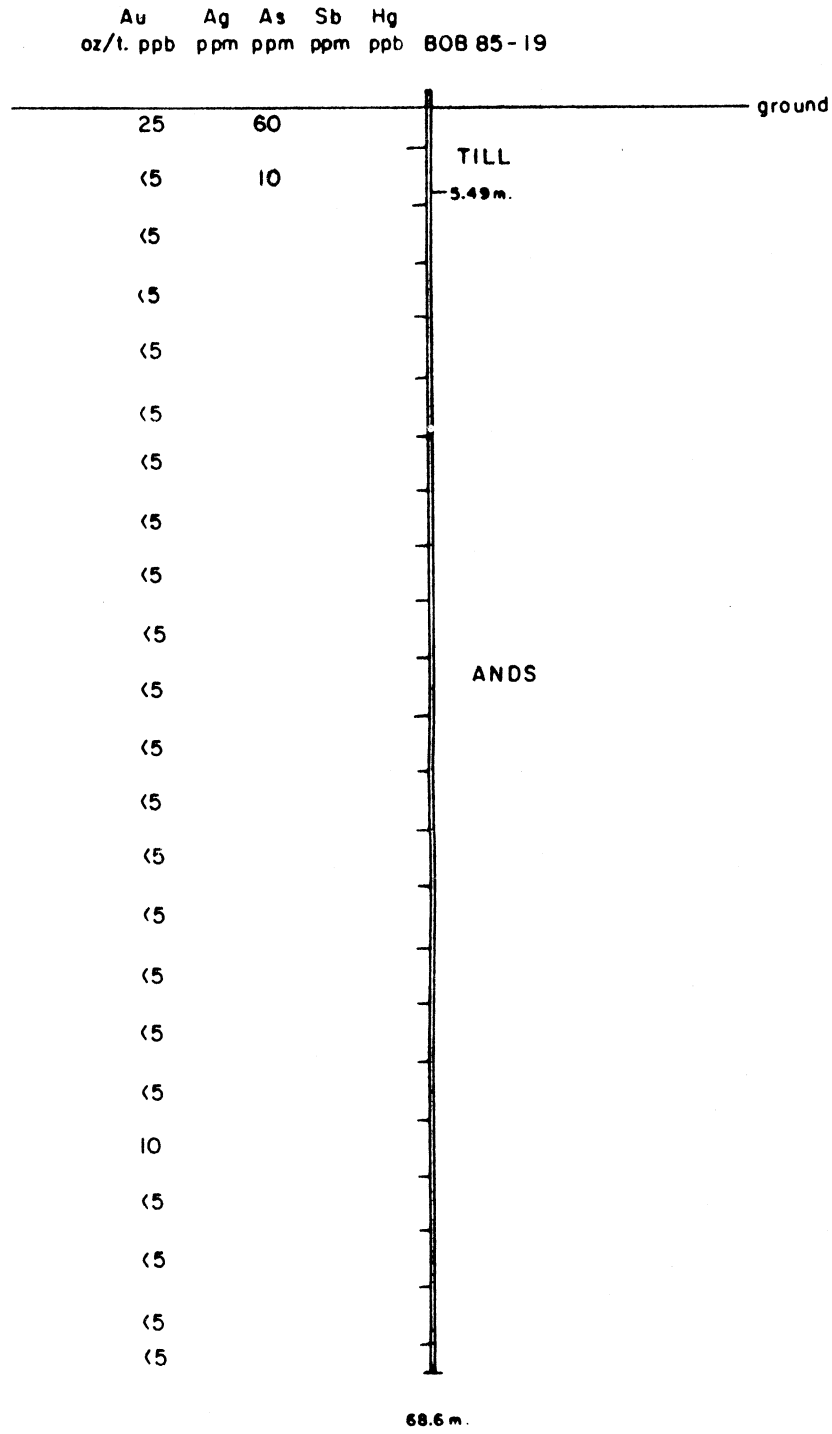
P.D.H. BOB 85-18

SCALE 1:400
N.T.S. 938/13

JUNE 1985
FIG. N° 2

PLAN

P.D.H.
 BOB 85-19
 Ⓣ -90°, 68.6 m
 Old Beezeeko Road, 150m E. of BOB 85-18
 150m W. of T/ L 15W.



LAC MINERALS LTD.
 BOB CLAIMS
 P.D.H. BOB 85-19

SCALE 1:400 JUNE 1985
 N.T.S. 93B/13 FIG. N^o.