

Monthly Report for July 1975. Smithers Office - B.C.D.M.

Page 2

copper prospect located approximately 12 miles east of Smithers. Canadian Superior is currently conducting a large percussion drill program on the front (south) side of the Onion.

Cities Service Base Camp - Chapman Lake

On July 8th I visited Cities Service's base camp located at Chapman Lake, approximately 25 air-miles northeast of Smithers.

Victoria Mine - Rocher Deboule Range

On July 9th I visited the old Victoria Mine located on the northwestern slope of Rocher Deboule Range, approximately 5 miles south of Hazelton. Jim Hutter, Jr. of Smithers is in the process of mapping the property and preparing it for "highgrading" in agreement with the owner, Bill McGowan. The trail to the workings is in good shape and all adits and showings were located. Grab samples were taken for examination. The vein matter consists of cobalt-nickel sulpharsenides in a hornblende gangue. Additional minerals include uraninite and molybdenite. Secondary minerals include erythrite and another uranium mineral. Gold is also contained in the sulpharsenides. Excellent descriptions of this property are contained in B.C.D.M. Annual Reports, 1949, pp. 82-93 by J. S. Stevenson, and in B.C.D.M. Bulletin No. 43, 1960, pp. 69-73 by A. Sutherland Brown.

Nanika Lake (DW, CORB, CUP, FEN) - Granges Exploration

On July 14th I visited the Nanika Lake porphyry copper-molybdenum prospect

located on the west shore of Nanika Lake approximately 75 air-miles south-southwest of Smithers. I shared the charter with Bill Wilkinson, geologist with Granby. Granges' 1973 and 1974 drill core was logged.

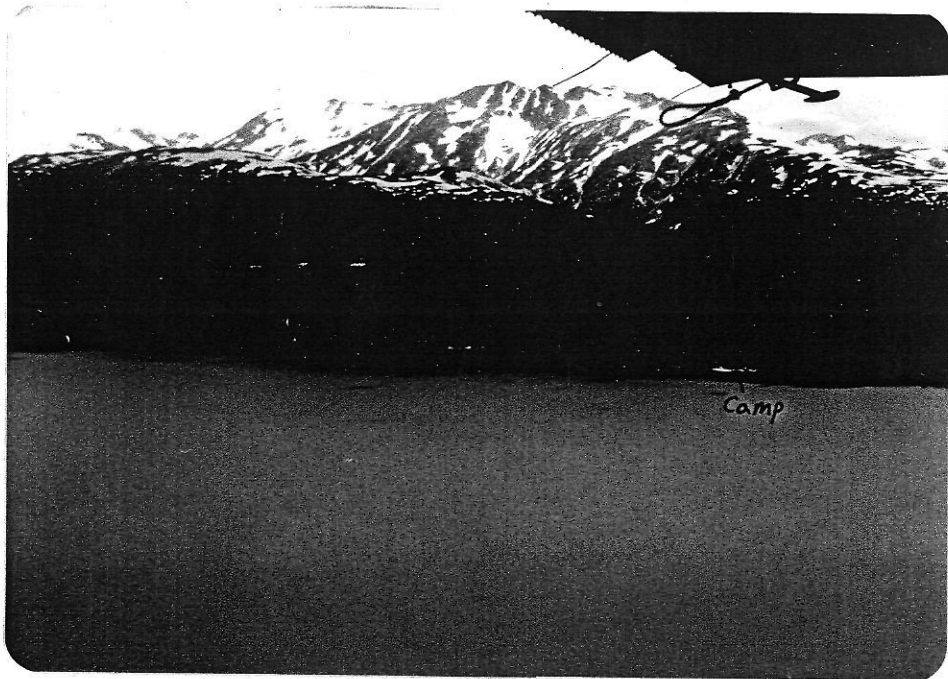
Bob Creek - Old Placer - Bus Hansen, P.A.A.

On July 15th I examined work done in the Bob Creek area located approximately 10 miles south of Houston. In the creek bed, attention was focused in the early 1900's to placer mining. More recently, mining companies have been looking at it from the standpoint of being a porphyry prospect, with little success to date.

Up from the creek bank, Bus Hansen, a P.A.A. grantee, and a partner have, according to them, spent their grant. They hired a "cat" for one day to clean out three previous trenches and make two dead-end cat trails through the bush. And that was their grant! Way to go, guys! In the trenches numerous gouge zones with heavy manganese and pyrite staining were observed. Sphalerite and galena occurred sporadically along fracture planes. Apparently ASARCO drilled 7 holes in 1968 but the location of the holes and the core is not known. The most annoying thing observed were the two useless cat trails leading off to a dead end in the bush; one being 850 feet in length and the other 250 feet.

Huber (Mineral Hill) - Peter Huber

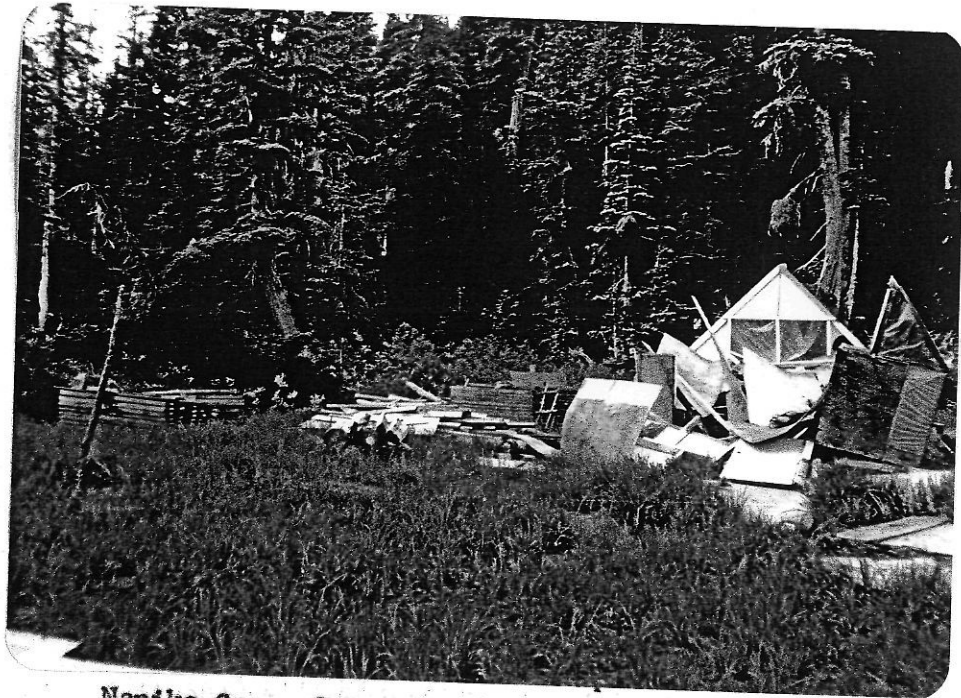
On July 15th I visited the Huber property located approximately 8 air-miles north of Houston. Peter Huber, a local prospector, has stripped out an area



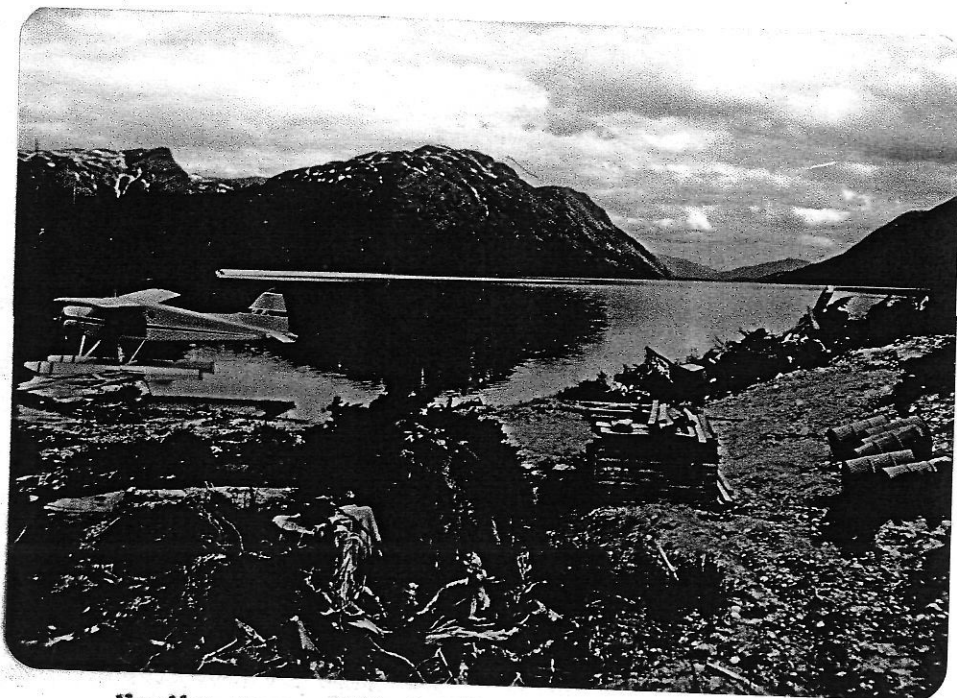
Nanika (Silver Cup) property, Nanika Lake looking west.



Looking north up Nanika Lake from camp at Nanika property.



Nanika Camp. Core stored to left of building.



Nanika camp. 1974 drill core.