






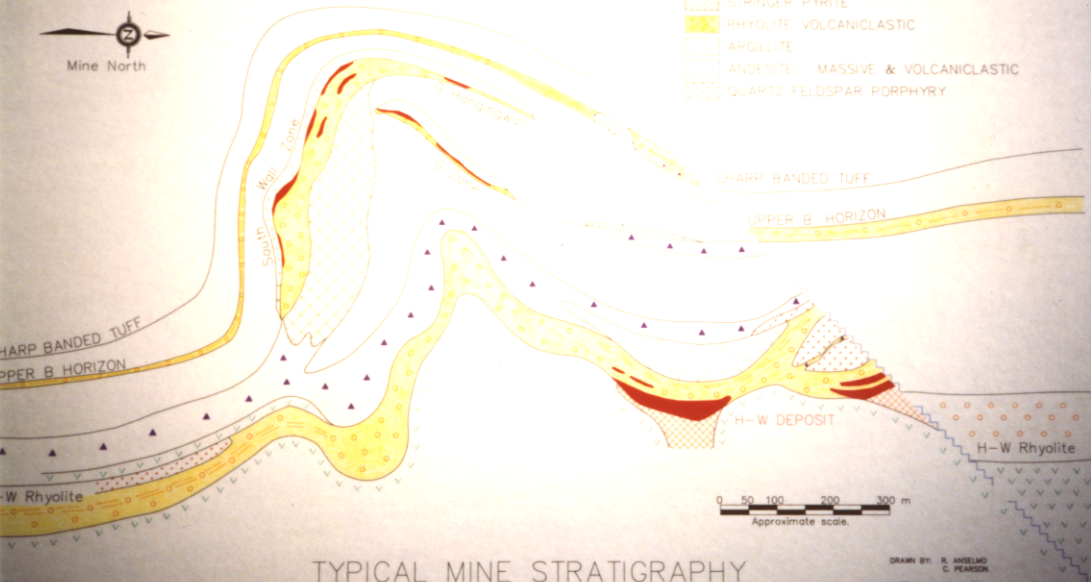




Mine North

-  MASSIVE SULPHIDES
-  MASSIVE SULPHIDE CLASTS
-  STRINGER PYRITE
-  RHYOLITE VOLCANICLASTIC
-  ARGILLITE
-  ANDESITE: MASSIVE & VOLCANICLASTIC
-  QUARTZ FELDSPAR PORPHYRY



TYPICAL MINE STRATIGRAPHY

DRAWN BY: R. ANSELMO
C. PEARSON
DATE: JAN. 14/92
FILENAME: SOHEMSEC.DWG

1. ~~MYRA FALLS - Typical Min.~~

Jan. '92

Myra Falls

885912