

## Route to Mt. Washington

Km.

↓

0.0

- start at corner of 17<sup>th</sup> St. & Cliffe Ave., Courtenay
- 1<sup>st</sup> traffic light at south end, where Island Hwy. turns right across bridge to Comox and Campbell R.
- Petro Canada self serve on SW corner
- turn left and head west on 17<sup>th</sup> St.

1.2 Km. - 17<sup>th</sup> St. ends at Willemar Ave. - turn right  
 - immediately cross Cumberland Rd.

1.8 Km. - Lake Trail Rd. - turn left (@ school on NW corner)

3.6 Km. - paved road - turn right (sign on post says "Inman Tire")

4.9 Km. - Crown Forest yard - curve right and stay on main road.

6.4 Km. - cross penstock and then Puntledge River

8.2 Km. - intersect road to Forbidden Plateau ski area - straight ahead.

8.6 Km. - bridge over Browns River

12.9 Km. - pavement ends at bridge over Dove Creek.

\* 13.2 Km. - main logging road junction - turn left up hill  
 - sign says "Mt. Washington ..."

~~XXXXXXXXXX~~

- stay on mainline up the mountain

- at two places you will encounter a major fork in the road;  
in both cases, take the left fork.

- approx. 10 km. from junction \*, at 2<sup>nd</sup> fork, a microwave tower will be visible above road - right fork leads to area where Murex zone drilling is in progress. (encounter drill road) (at 1<sup>st</sup> switch back).

- approx. 16 1/2 km. from junction \* - ski area - fork in road: (3<sup>rd</sup> fork from \*)  
 - turn right to Alpine ski village (Bristow is staying in a condominium)  
OR - turn left to Nordic ski area and main exploration area over ↓.

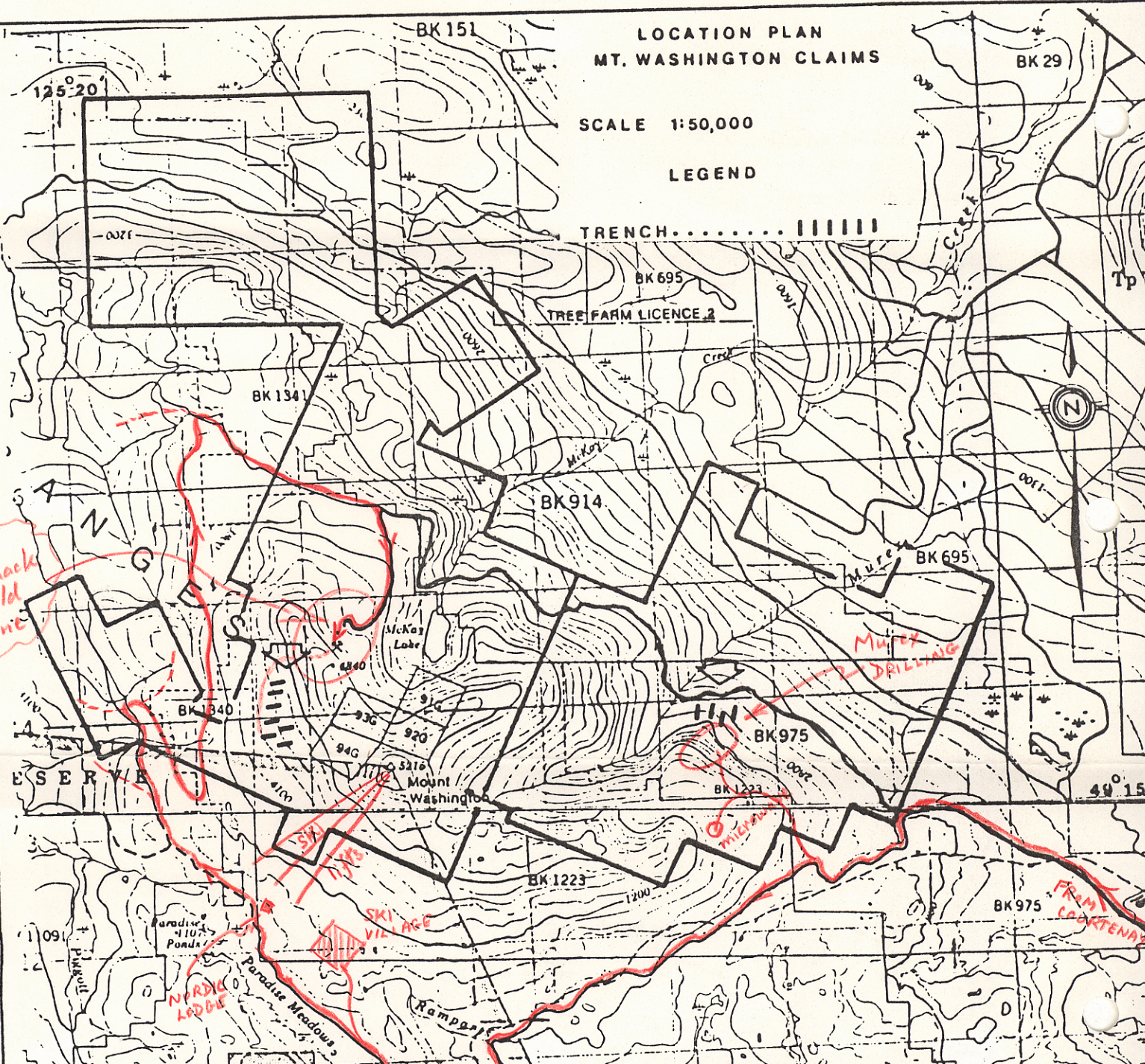
- if you take the left fork, you will pass Nordic ski lodge after about 1.5 km.
- stay on most heavily travelled route through network of logging roads (see red line on map.)
- if you manage to stay on correct route, you will reach the core shack (tent) and old mine site at 8.5 km. past Nordic ski lodge.

LOCATION PLAN  
MT. WASHINGTON CLAIMS

SCALE 1:50,000

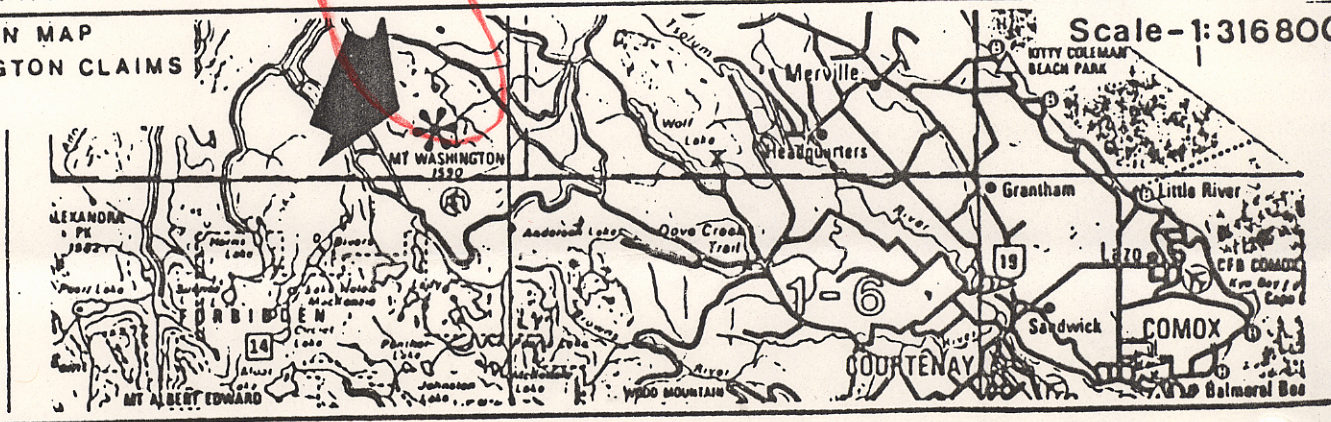
LEGEND

TRENCH.....IIIIII



LOCATION MAP  
MT. WASHINGTON CLAIMS

Scale-1:316800



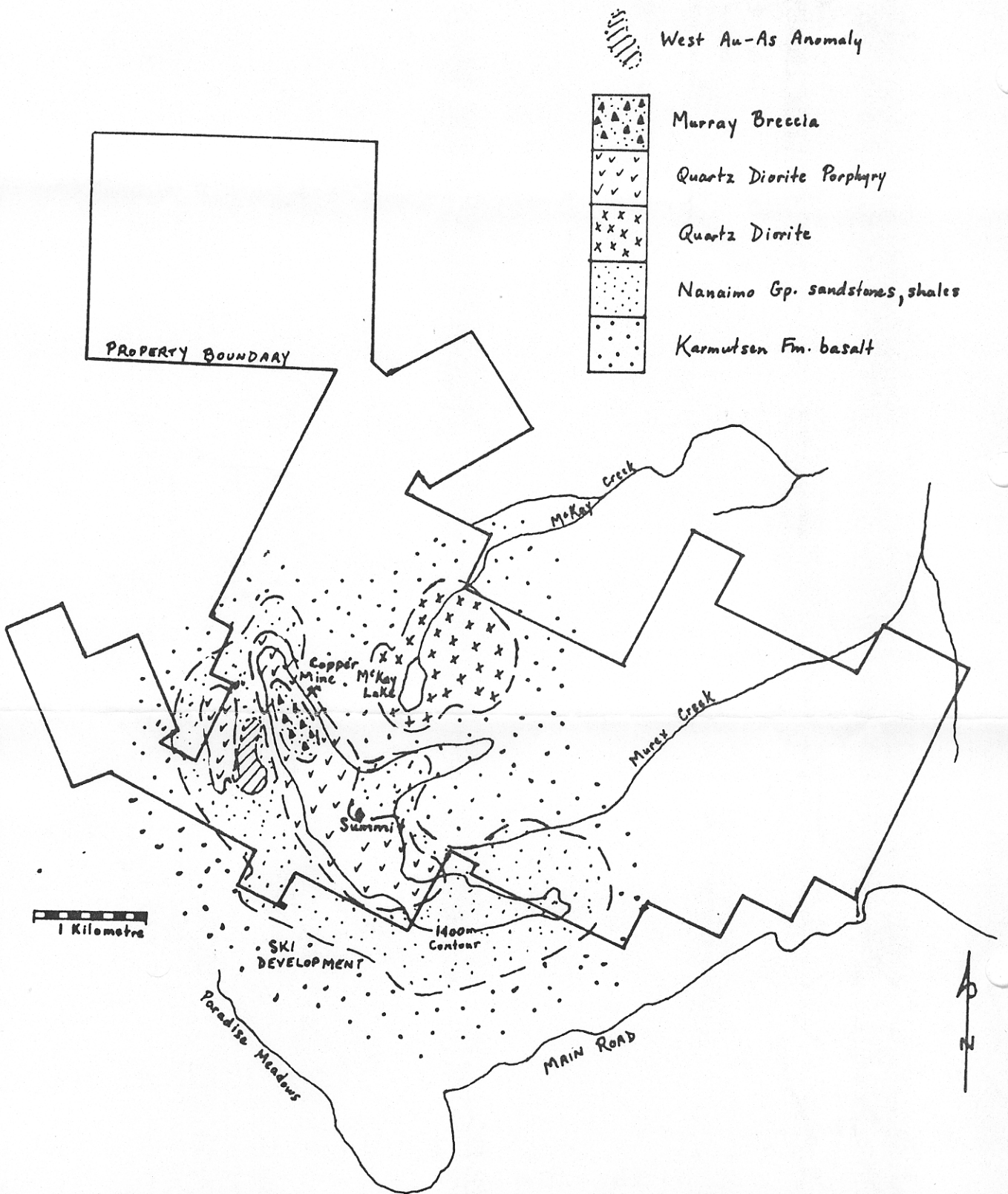
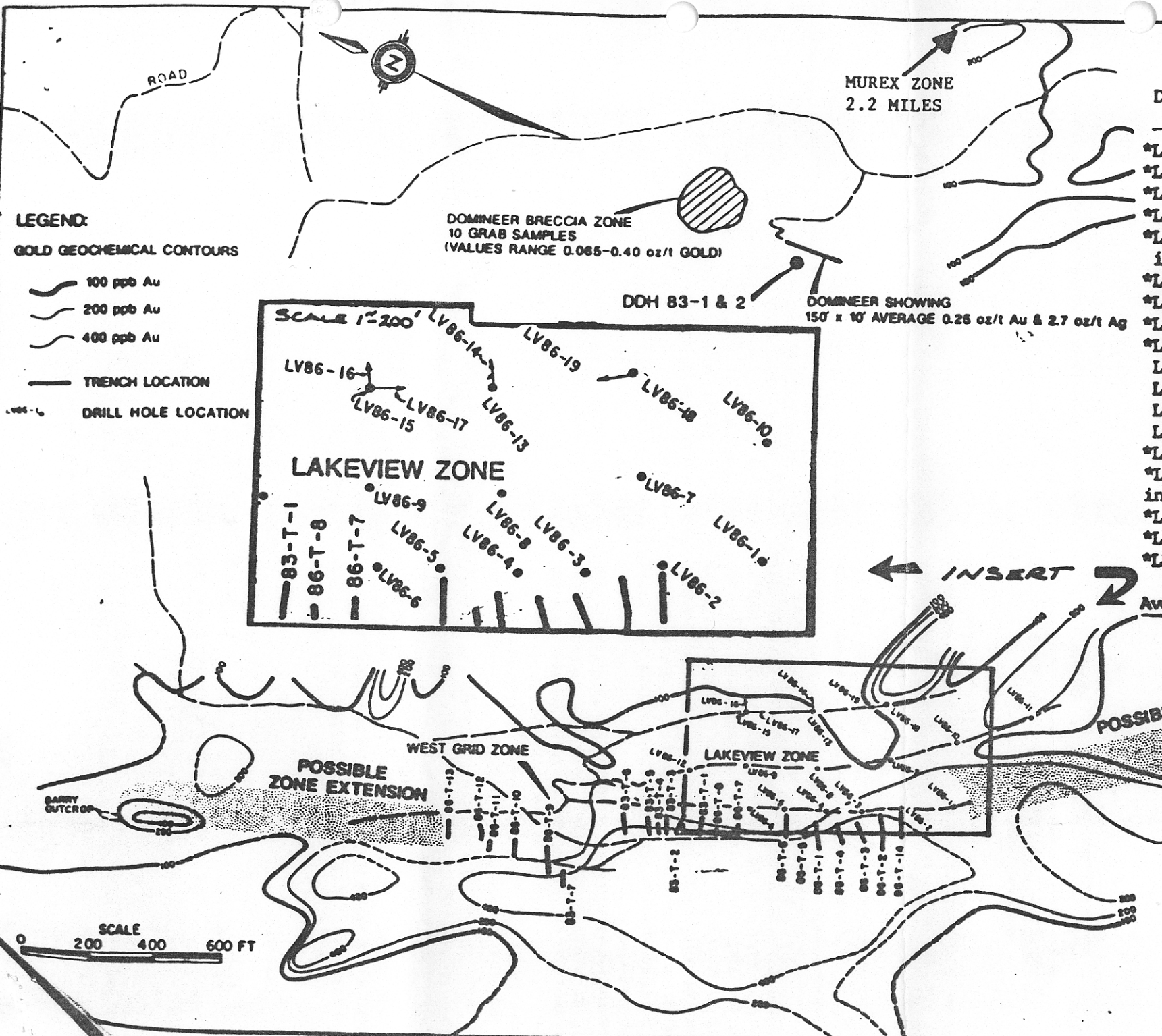


FIGURE ?? - MOUNT WASHINGTON GOLD PROSPECT  
 (Geology simplified after Carson, 1972)



MUREX ZONE  
2.2 MILES

DOMINEER BRECCIA ZONE  
10 GRAB SAMPLES  
(VALUES RANGE 0.085-0.40 oz/t GOLD)

DDH 83-1 & 2

DOMINEER SHOWING  
150' x 10' AVERAGE 0.25 oz/t Au & 2.7 oz/t Ag

**LEGEND:**

**GOLD GEOCHEMICAL CONTOURS**

- 100 ppb Au
- 200 ppb Au
- 400 ppb Au

**TRENCH LOCATION**

**DRILL HOLE LOCATION**

**D.D. Hole # Truewidth Gold**

D.D. Hole #	Truewidth Feet	Gold
*LV 86-1	2.4'	TR.
*LV 86-2	6.0'	.68
*LV 86-3	6.8'	.153
*LV 86-4	5.0'	.143
*LV 86-5	17.6'	.352
including	8.6'	.53
*LV 86-6	6.0'	.25
*LV 86-7	6.0'	.205
*LV 86-8	7.5'	.114
*LV 86-9	5.0'	.130
LV 86-10	--	--
LV 86-11	--	--
LV 86-12	--	--
LV 86-13	2.4'	.183
*LV 86-14	5.2'	.28
*LV 86-15	15.0	.114
including	5.0	.278
*LV 86-16	7.0	.367
*LV 86-17	5.0	.39
*LV 86-18	4.0	.46
<b>Average</b>	<b>7.4'</b>	<b>.277</b>

**TRENCH ASSAY RESULTS**

TRENCH	WIDTH (FT.)	GOLD oz/t	SILVER oz/t
86-T-1	1.25	0.720	2.39
86-T-1	2.0	0.026	0.66
86-T-1	3.2	0.127	0.79
86-T-1	4.0	0.149	0.78
86-T-2	2.3	1.267	0.95
86-T-2	2.3	0.016	0.38
86-T-2	3.5	1.26	0.78
86-T-2	2.8	0.11	0.42
86-T-2	2.8	0.8	0.65
86-T-2	3.8	0.039	0.24
86-T-3	2.3	1.152	0.95
86-T-3	2.8	0.632	0.61
86-T-3	4.8	0.084	0.35
86-T-3	3.5	0.649	1.28
86-T-4	3.6	0.164	0.88
86-T-4	3.8	4.192	3.43
86-T-4	5.8	0.704	2.13
86-T-4	1.5	2.72	4.72
86-T-4	2.8	0.887	0.23
86-T-4	0.5	1.26	1.66
86-T-4	2.8	0.018	0.86
86-T-5	3.0	0.638	1.95
86-T-5	4.0	0.57	1.50
86-T-5	1.0	0.426	4.43
86-T-5	0.5	0.401	1.77
86-T-5	2.0	2.10	0.2
86-T-5	2.8	0.368	1.78
86-T-6	3.8	0.054	0.28
86-T-6	2.3	0.020	0.88
86-T-6	3.0	0.039	0.23
86-T-6	--	1.26	7.80
86-T-6	4.2	0.045	0.26
86-T-7	1.5	0.045	0.27
86-T-7	1.5	0.009	0.01
86-T-7	2.0	0.296	1.57
86-T-7	4.0	0.30	0.42
86-T-9	2.2	1.62	2.95
86-T-9	3.2	0.80	3.18
86-T-9	4.0	0.177	0.87
86-T-9	2.8	0.046	0.32
86-T-12	--	0.89	4.25
86-T-15	3.8	0.41	0.93
86-T-15	2.0	0.062	0.11
86-T-15	1.5	0.022	0.20
86-T-15	2.0	0.032	0.88
83-T-6	2.0	0.24	1.22
83-T-7	2.5	0.20	0.49
83-T-7	1.8	0.28	2.07
83-T-7	4.0	0.24	0.84
83-T-7	4.0	0.156	0.32
83-T-7	4.6	1.22	0.78
83-T-7	6.0	0.064	0.26

NOTE: AWAITING OTHER TRENCH RESULTS

**BETTER RESOURCES LTD.**  
**MT. WASHINGTON PROJECT**  
 15 MILES WEST OF COMOX,  
 VANCOUVER ISLAND, B.C.  
**COMPILATION MAP**

BY: D.B./rwr

DATE: SEPT., 1986

BETTER RESOURCES LIMITED(BRZ-V)

LAKEVIEW WEST GRID AREA RECENT DRILL HOLE RESULTS

<u>DRILL HOLE NO.</u>	<u>TRUE WIDTH, FEET</u>	<u>OZ. GOLD/T</u>	<u>OZ. SILVER/T</u>
LV 86-1	2.4	tr	0.14
-2	6.0	.68	2.70
-3	6.8	.153	1.09
-4	5.0	.143	.27
-5	17.6	.352	1.0
including	8.6	.53	1.50
86-6	6.0	.25	1.1
LV 86-7	6.0	.205	
-8	7.5	.114	
-9	5.0	.130	
-13	2.4	.183	
LV86 -14	5.2	.28	
-15	2.0	.234	
plus	15.0	.114	
including	5.0	.278	
-16	7.0	.367	
plus	1.5	.072	
-17	5.0	.39	
LV86 -18	4.0	.46	
MX86 - 1	52.3	.174	
including	42.3	.21	
or	22.3	.313	
plus	8.9	.080	
plus	10.0	.112	
TWO HOLES DRILLED IN 1983 RETURNED			
West of Domineer 83, 1	10.1	.19	.87
West of Domineer 83, 2	9.0	.289	3.41
Old Hole Lakeview	10.0	.30	

---