

Reserves & Mining

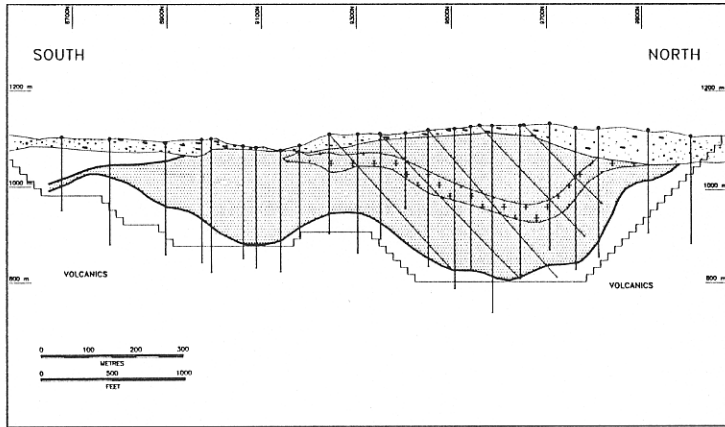
The Mt. Milligan deposits rank among the world's largest gold-copper deposits. Additional drilling presently underway, is expected to further increase reserves. Current drill indicated reserves are shown in the table to the right. Engineering of mineable reserves is in progress.

Drill Indicated Reserves

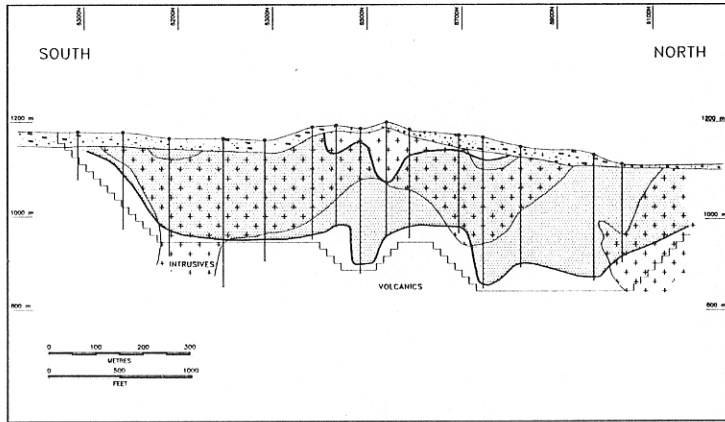
Convert to TONS.

Deposit	Tonnes	Grade		Contained Metal	
		Gold oz./ton	Copper %	Gold oz.	Copper tonnes
Mt. Milligan	265,000,000	0.016	0.19	4,700,000	510,000
Southern Star	135,000,000	0.011	0.23	1,650,000	310,000
Total	400,000,000	0.014	0.20	6,350,000	820,000

The massive size, blanket-shaped configuration and uniform distribution of gold and copper make the deposits ideally suited for high volume, low cost, open pit mine development. Stripping ratios are in the 1.2:1 range. Mining will commence within a near surface, relatively higher grade zone.



Mt. Milligan Gold-Copper Deposit



Southern Star Gold-Copper Deposit