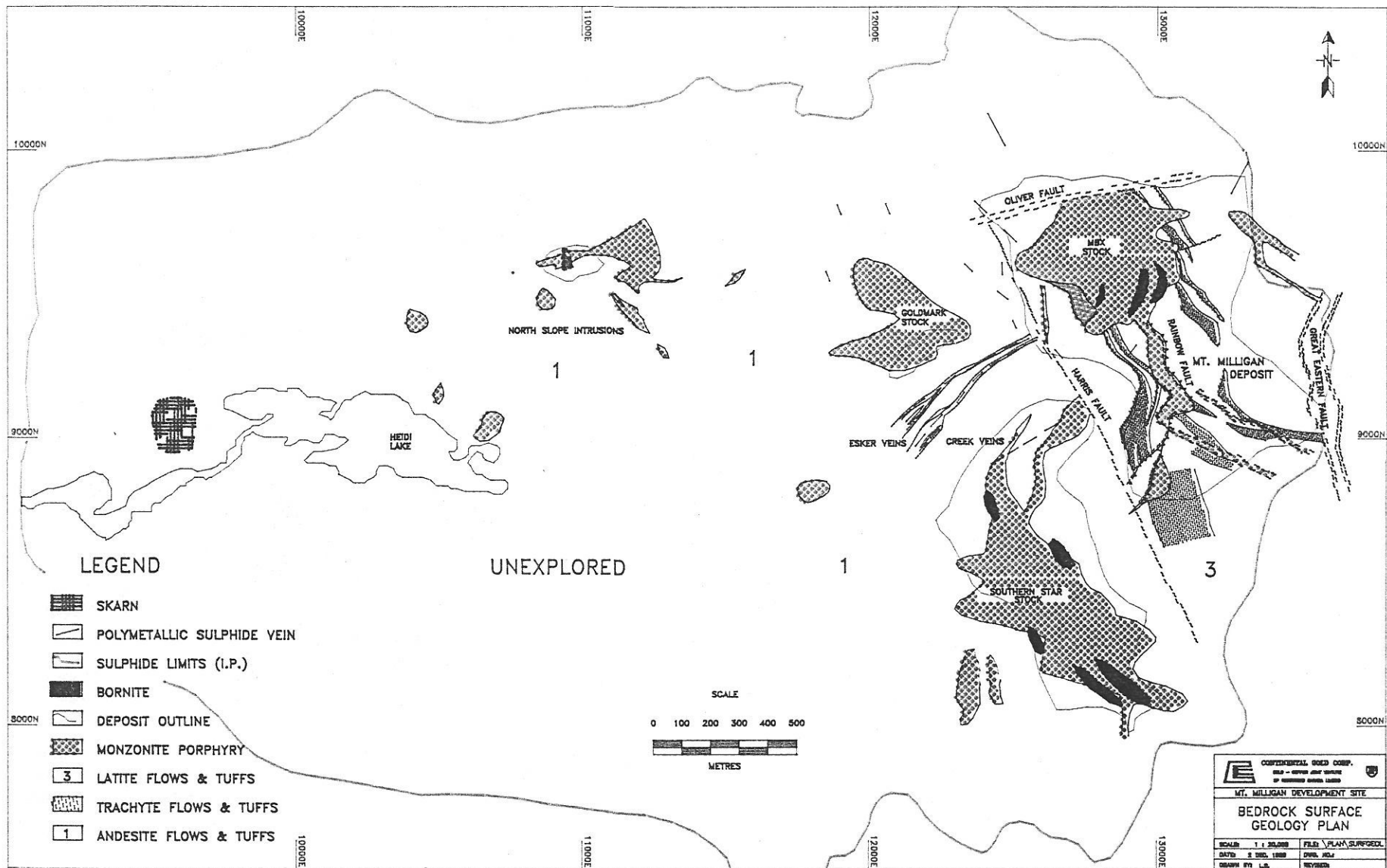
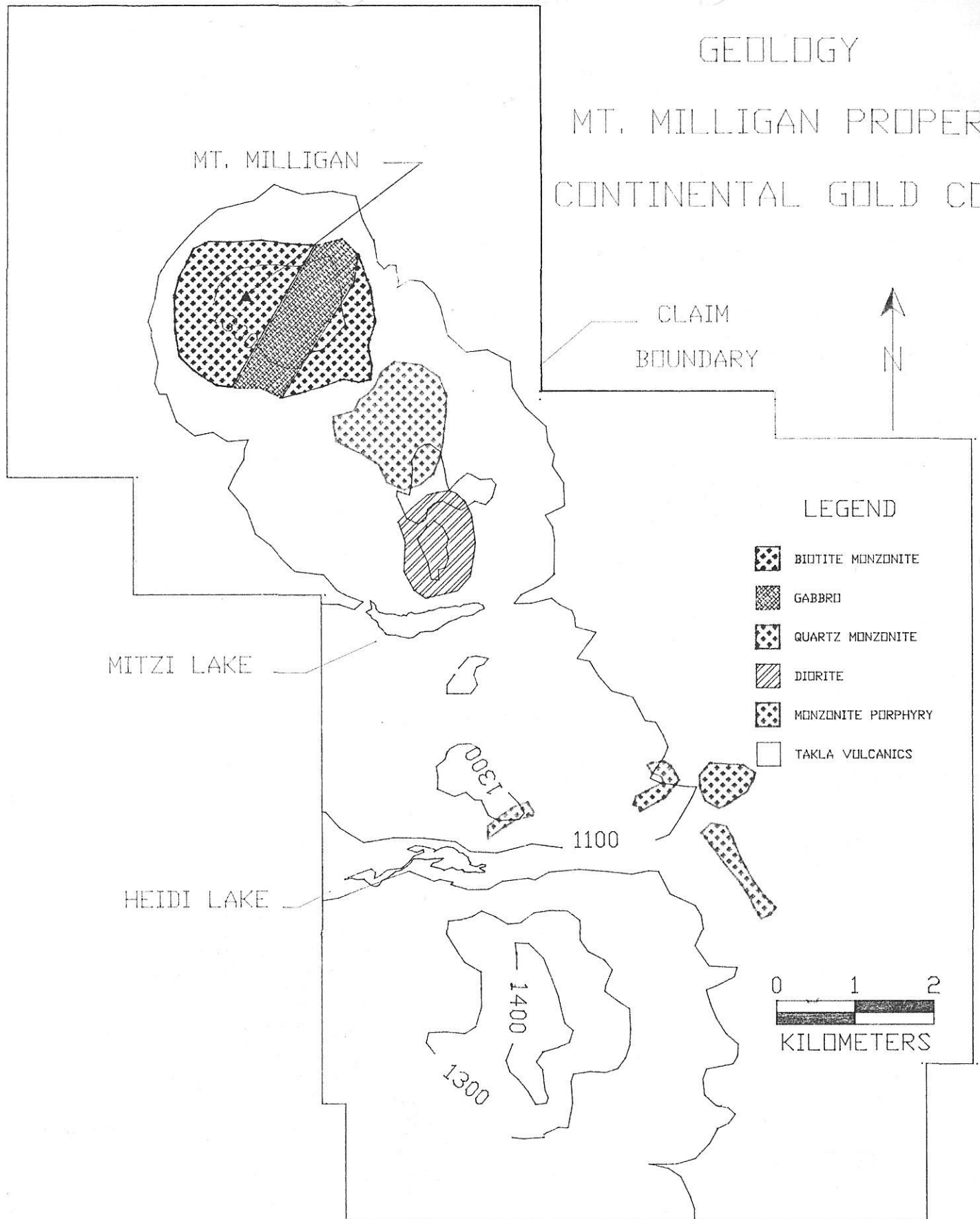


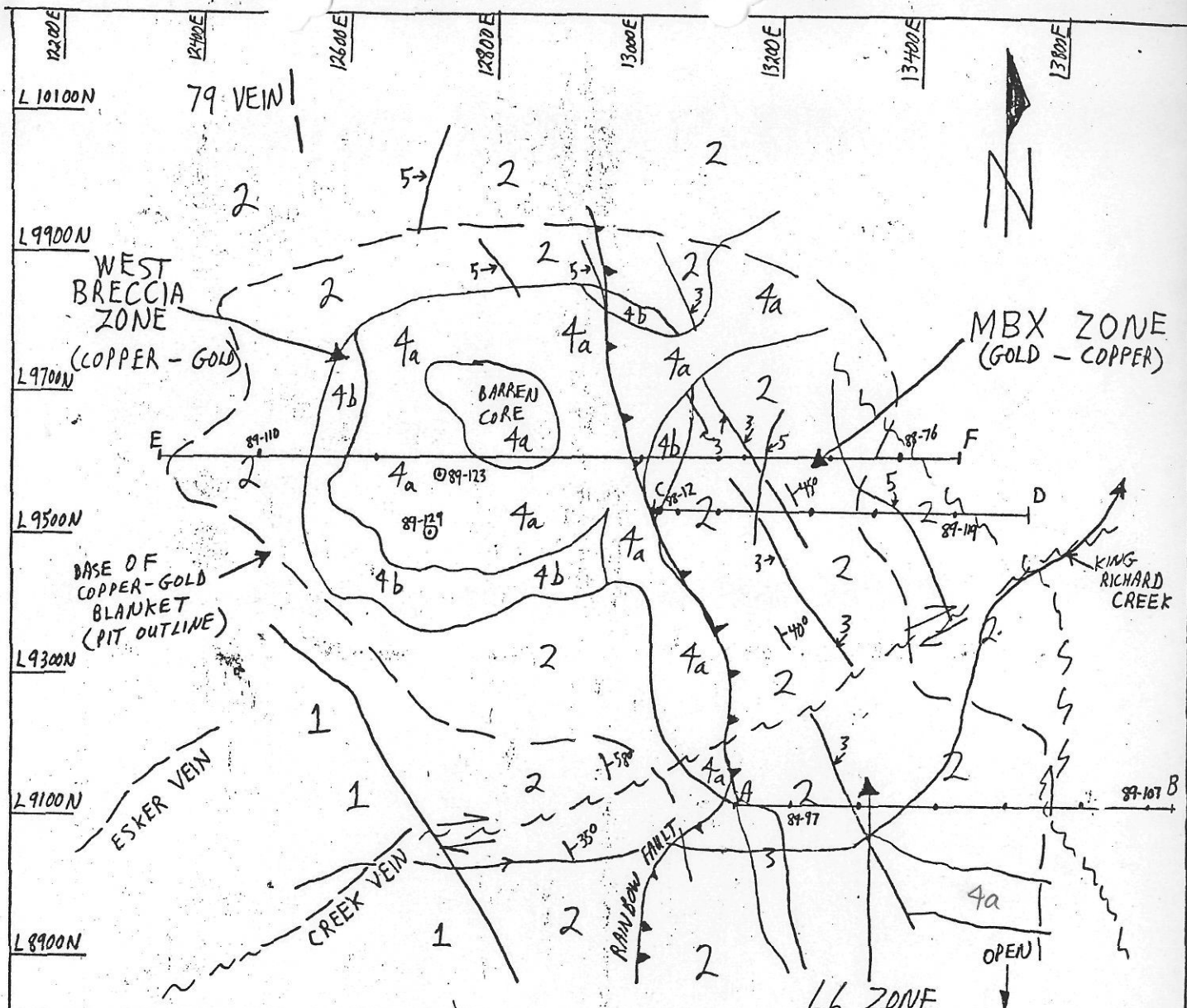
885748



# GEOLOGY

## MT. MILLIGAN PROPERTY CONTINENTAL GOLD CORP.





INTRUSIVES

JURASSIC-CRETACEOUS (Post Mineralization)

5 Diorite and Monzonite Dykes

EARLY JURASSIC (Syn-Mineralization)

4 Monzonite 4a. Porphyry  
4b. Hybrid/Breccia

SUPRACRUSTAL ROCKS

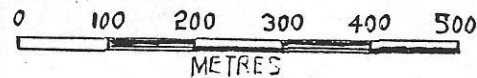
LATE TRIASSIC (TARLA GROUP)

3 Latite Flows and Pyroclastics (markers)

2 Trachyte Flows and Pyroclastics

1 Andesitic Flows and Pyroclastics

f50° - bedding  
 ~~~~~ - normal fault  
 <- - reverse fault  
 ⊙ - drill hole  
 ⊙ 89-123 - location for zircon dating  
 A - cross section with drill holes



MT. MILLIGAN

1050 LEVEL PLAN

(DDH'S PROJECTED VERTICALLY FROM SURFACE)

(from company plans)

Tom Schraeter July 4, 1989

Fig. 3

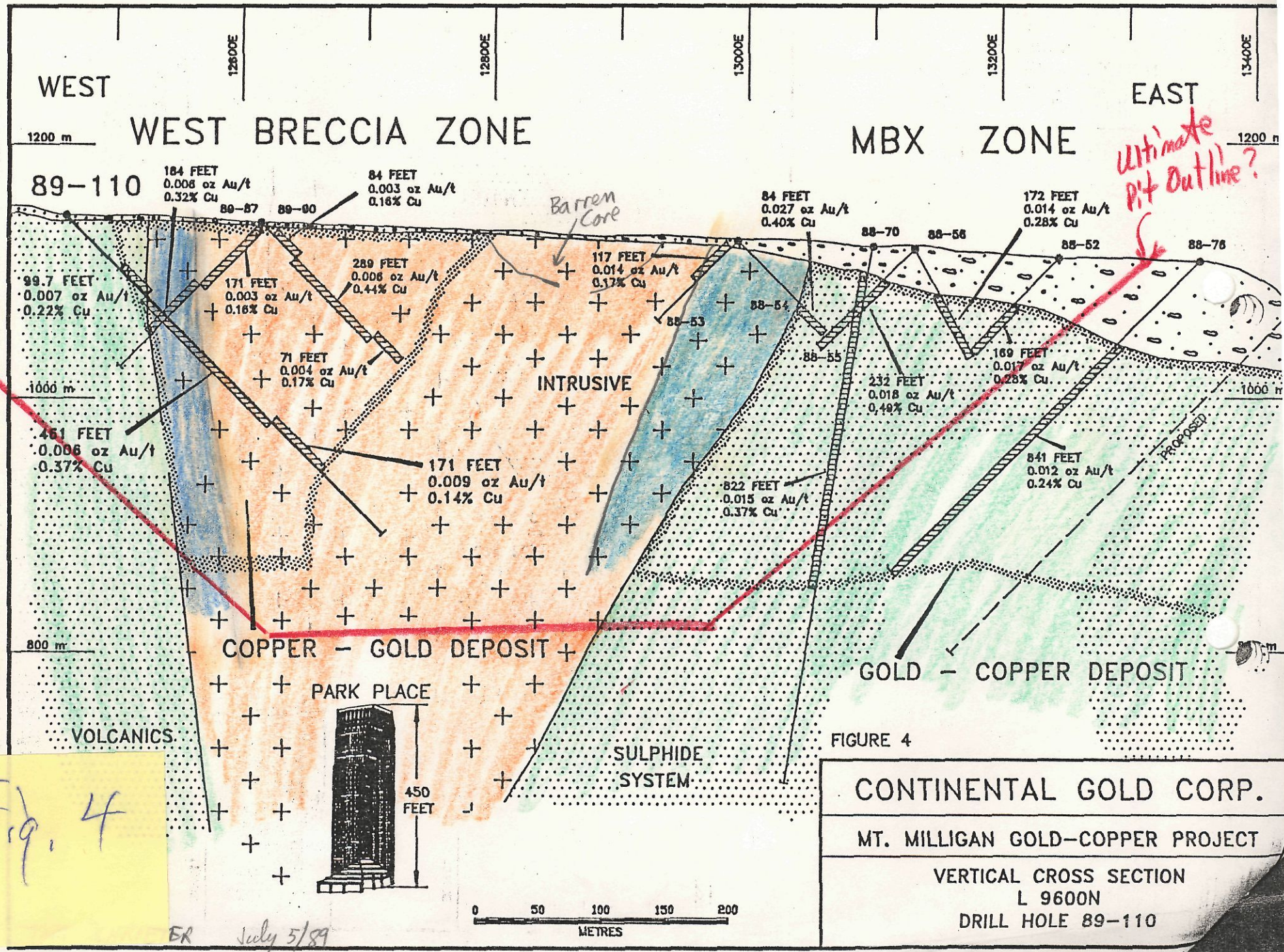


Fig. 4

ER July 5/89

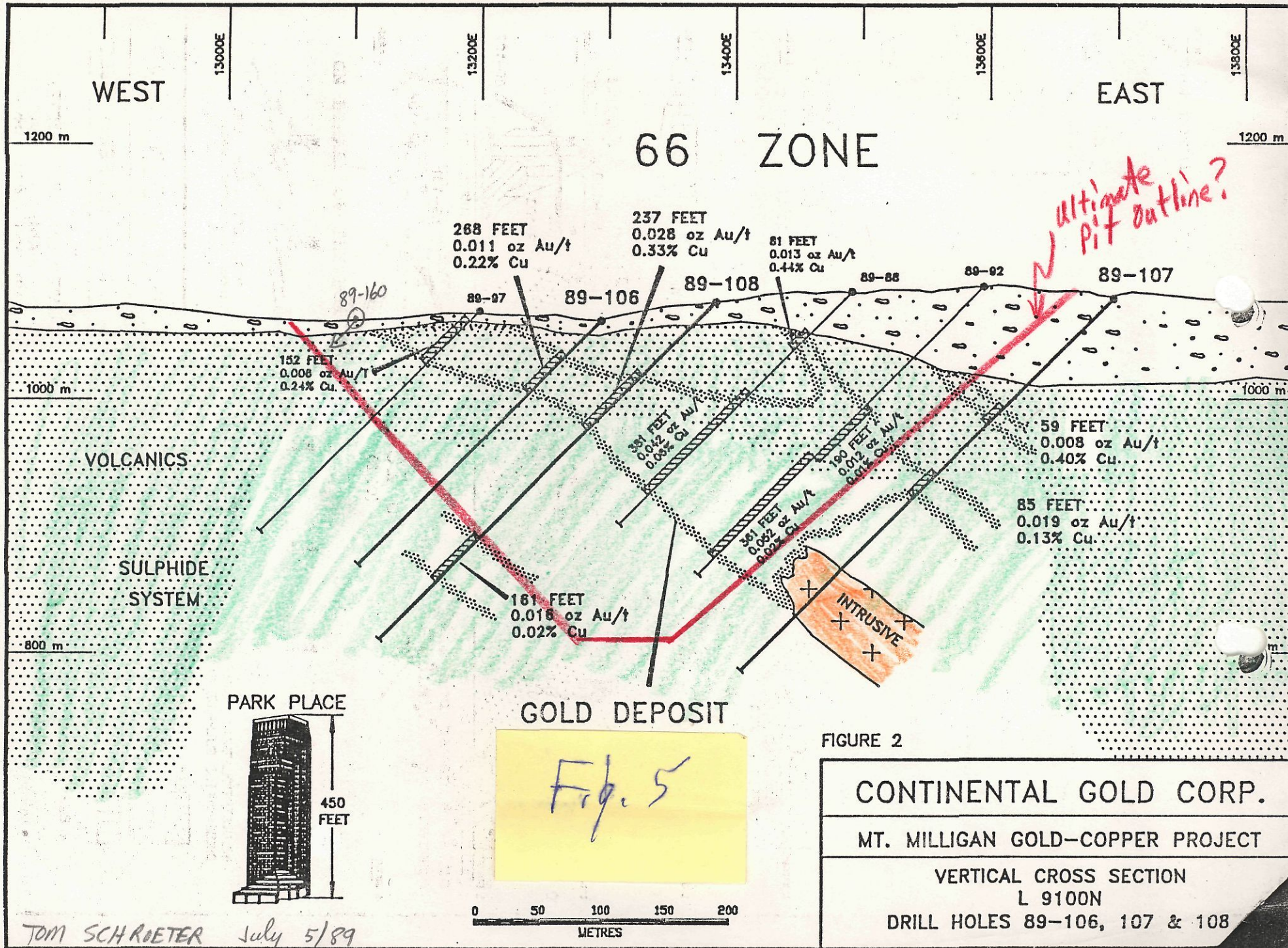


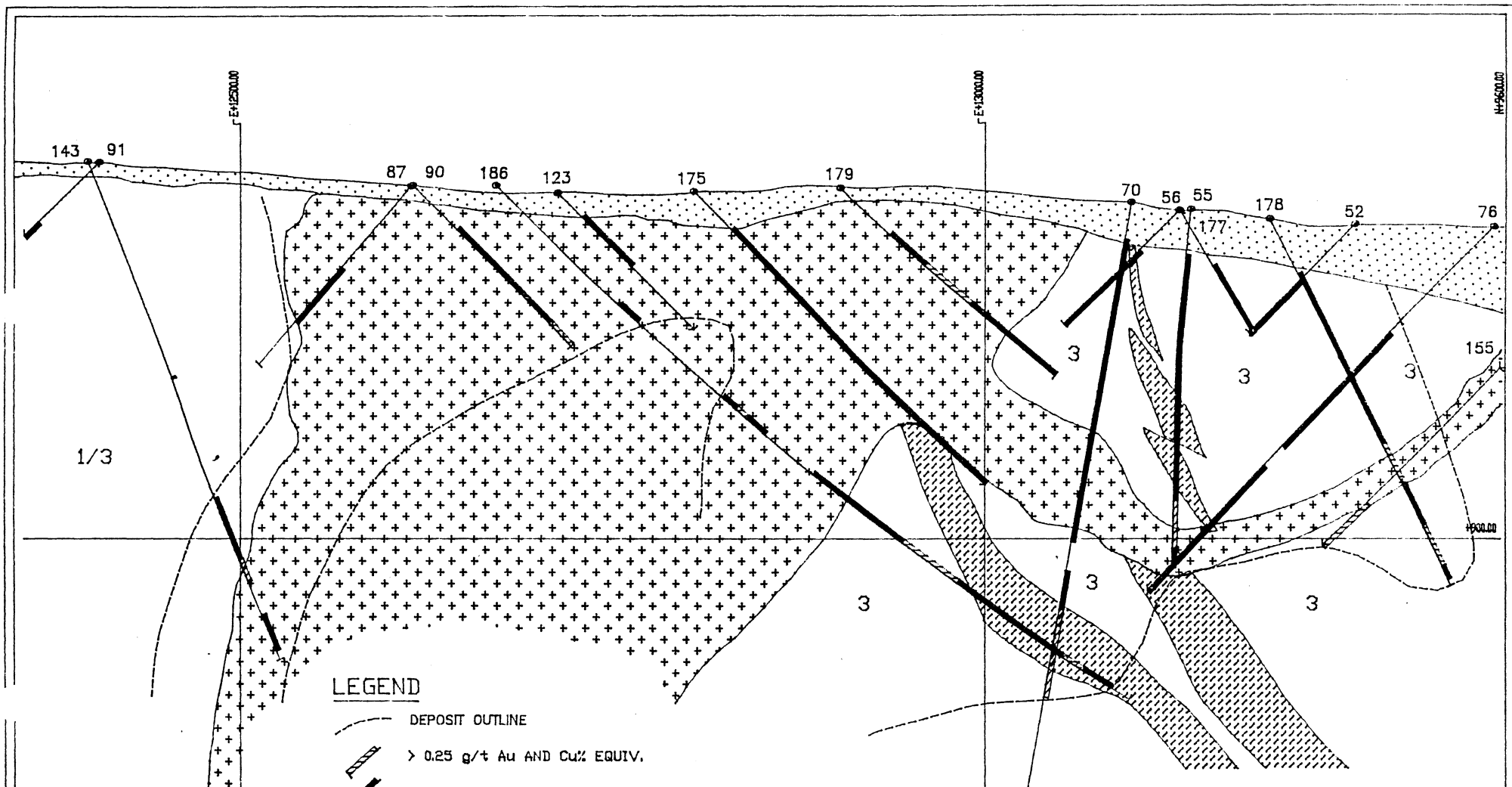
FIGURE 2

**CONTINENTAL GOLD CORP.**

**MT. MILLIGAN GOLD-COPPER PROJECT**

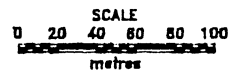
**VERTICAL CROSS SECTION**  
**L 9100N**  
**DRILL HOLES 89-106, 107 & 108**

TOM SCHROETER July 5/89

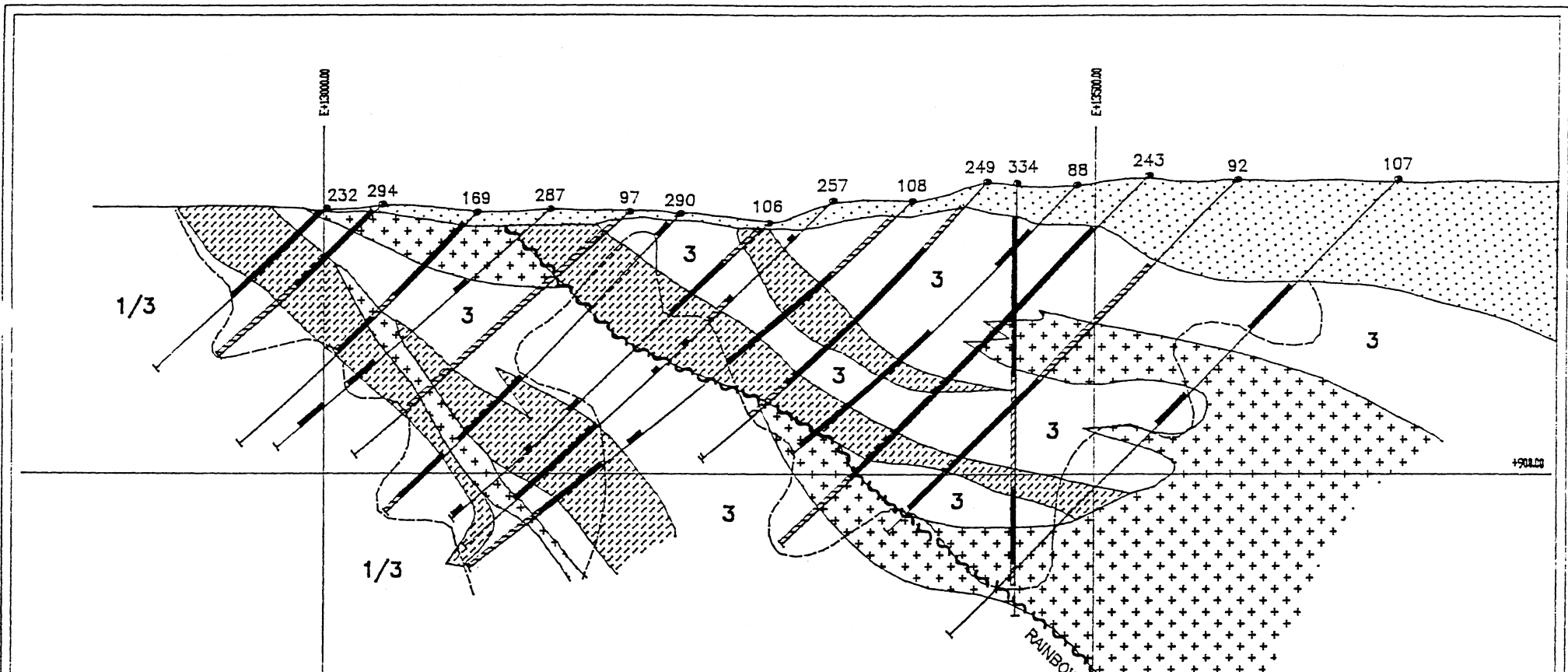


**LEGEND**

- DEPOSIT OUTLINE
- > 0.25 g/t Au AND Cu% EQUIV.
- > 0.40 g/t Au AND Cu% EQUIV.
- GEOLOGY**
- OVERBURDEN
- EARLY JURASSIC**
- MONZONITE
- LATE TRIASSIC**
- 3 LATITE FLOWS AND PYROCLASTICS
- TRACHYTE FLOWS AND PYROCLASTICS
- 1 ANDESITIC FLOWS AND PYROCLASTICS



|                                      |                                                     |                  |
|--------------------------------------|-----------------------------------------------------|------------------|
|                                      |                                                     |                  |
| REBAGLIATI GEOLOGICAL CONSULTING LTD |                                                     |                  |
| CLIENT:                              | CONTINENTAL GOLD CORP                               |                  |
| PROJECT:                             | MT. MILLIGAN                                        |                  |
| TITLE:                               | MT. MILLIGAN DEPOSIT<br>CROSS SECTION<br>9600 NORTH |                  |
| DRAWN BY:                            | D.M.C.                                              | DATE: 28 Feb. 90 |
| DATE:                                | 28 Feb. 90                                          | FILE NO: 11      |



**LEGEND**

- DEPOSIT OUTLINE
- > 0.25 g/t Au AND Cu% EQUIV.
- > 0.40 g/t Au AND Cu% EQUIV.

**GEOLOGY**

- OVERBURDEN
- EARLY JURASSIC**
- MONZONITE
- LATE TRIASSIC**
- 3 LATITE FLOWS AND PYROCLASTICS
- TRACHYTE FLOWS AND PYROCLASTICS
- 1 ANDESITIC FLOWS AND PYROCLASTICS



|                                                            |                  |                   |
|------------------------------------------------------------|------------------|-------------------|
|                                                            |                  |                   |
| REBAGLIATI GEOLOGICAL CONSULTING LTD                       |                  |                   |
| CLIENT: CONTINENTAL GOLD CORP                              |                  |                   |
| PROJECT: MT. MILLIGAN                                      |                  |                   |
| TITLE: MT. MILLIGAN DEPOSIT<br>CROSS SECTION<br>9100 NORTH |                  |                   |
| WORK BY: C.M.R.                                            | DRAWN BY: D.M.C. | SCALE: 93 N/L 0/4 |
| DATE: 28 Feb. 90                                           | REVISED:         | ISSUED:           |