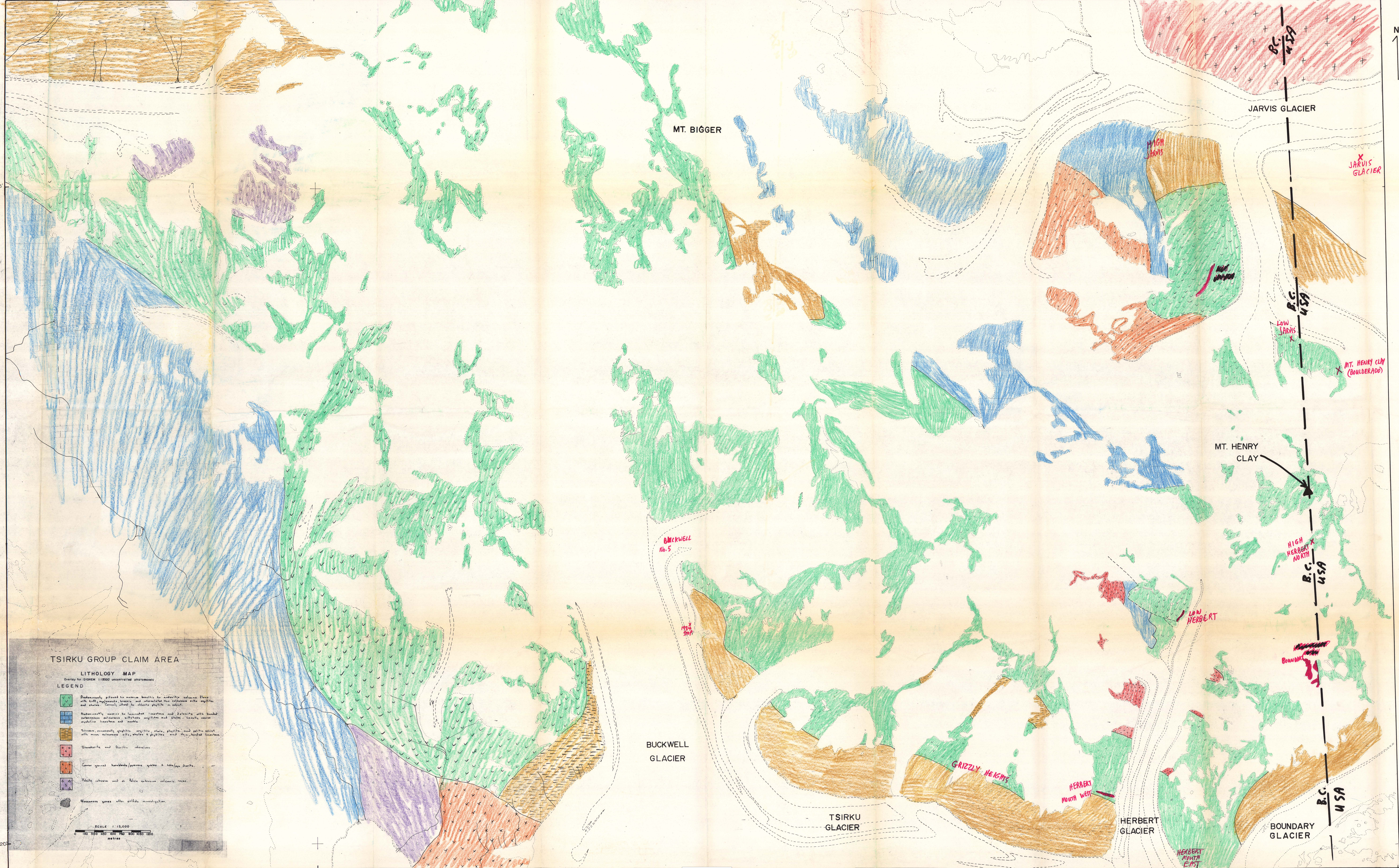
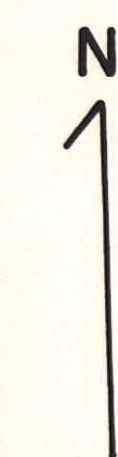


MT. McDONNELL (A4)



TSIRKU GROUP CLAIM AREA

LITHOLOGY MAP

Overlay for DIGHEM 1:50000 uncorrected stereometric

- LEGEND
- Predominantly gneiss to medium basaltic to calcareous volcanic flows with buff, argillaceous, basaltic and uncalcareous siliceous argillites and shales. Commonly altered to chlorite, phyllosilicates, etc.
 - Predominantly massive to laminated limestone and dolomite with local subordinate calcareous argillites and shales. Locally occur argillite, limestone and marble.
 - Siliceous, occasionally graphitic, argillite, shale, phyllite and talc schist with minor calcareous silts, shales & phylites and thin, bedded limestone.
 - Quartzite and Quartz schist.
 - Commonly gneiss, hornblende, pyroxene, quartz & talciferous quartzite.
 - Thinly tabular and in thin subvertical calcareous veins.
 - Metasedimentary gneiss after phyllite, micaceous shale.

SCALE 1:50,000



Mt. Henry Clay 885678

136°45'

136°30'

