

Port ALB.
Press Rel. file
885425

Westmin Resources Limited Angle Resources Ltd. Nexus Resource Corporation
904-1055 Dunsmuir Street 3270-666 Burrard Street 3270-666 Burrard Street
Vancouver, B.C. Vancouver, B.C. Vancouver, B.C.
V7X 1C4 (604) 681-2253 V6C 2Z9 (604) 682-8567 V6C 2Z9 (604) 682-8567

April 9, 1987

**ADDITIONAL GOLD INTERSECTIONS FROM 900 ZONE
DEBBIE PROJECT, PORT ALBERNI, VANCOUVER ISLAND, B.C.**

Westmin Resources Limited, as operator, reports additional diamond drill intersections on the 900 Zone at the Debbie Project. The central intersection (182.7-227.0 ft) in DN50 was previously reported.

<u>Hole</u>	<u>Grid</u> (m)	<u>Dip</u>	<u>From</u> (ft)	<u>To</u> (ft)	<u>Length</u> (ft)	<u>Au</u> (oz/T)
DN50	8+38N	-70°E	140.0	143.3	3.3	0.164
	0+35W		182.7	227.0	44.3	1.137
			249.0	254.2	5.2	0.452
DN45	8+38N	-48°E	79.0	85.0	5.9	0.101
	0+35W		98.7	108.5	9.8	0.051
DN52	8+38N	-62°E includes	122.0	148.2	26.2	0.243
	0+35W		125.3	141.7	16.4	0.335
DN55	8+40N	-56°E	278.4	285.0	6.6	0.210
	0+72W		311.3	314.6	3.3	0.564
DN58	8+10N	-45°E	87.9	88.9	1.0	0.135
	0+57W		103.0	104.3	1.3	1.924
DN59	8+10N	-64°E	74.5	79.7	5.2	0.959
	0+57W		104.6	107.9	3.3	0.166
			124.3	127.6	3.3	0.101

This report completes the significant results from the 900 Zone drill program which was concluded at the end of February. A further drill program is planned.

For further information contact Dr. A. E. Soregaroli (681-2253) or Mr. R. R. Walker (286-1814) at the Westmin offices.

Westmin Resources Limited Angle Resources Ltd. Nexus Resource Corporation

A. E. Soregaroli

Leon E. Nowek

James W. MacNeil

This news release was prepared by Westmin Resources Limited who accepts responsibility for its contents. The Vancouver Stock Exchange has neither approved or disapproved its contents.

Westmin Resources Limited
904-1055 Dunsmuir Street
Vancouver, B.C.
V7X 1C4 (604) 681-2253

Angle Resources Ltd.
1002-475 Howe Street
Vancouver, B.C.
V6C 2B3 (604) 682-8567

Nexus Resource Corporation
1002-475 Howe Street
Vancouver, B.C.
V6C 2B3 (604) 682-8567

February 23, 1987

HIGH GRADE GOLD INTERSECTED
DEBBIE PROJECT, PORT ALBERNI, VANCOUVER ISLAND, B.C.

Westmin Resources Limited, as operator of the Debbie project, reports high grade assays from another drill hole in the 900 Zone. Assays from three previous drill holes in this zone were released in January.

<u>Hole</u>	<u>Grid</u> (m)	<u>Dip</u>	<u>From</u> (ft)	<u>To</u> (ft)	<u>Length</u> (ft)	<u>Au</u> (oz/T)
inside house ✓ DN50-87	8+38N, 0+35W	-70°E	182.7	227.0	44.3	1.137
		includes	201.7	227.0	25.3	1.803

The contribution of metallics to these uncut fire assays, as well as the observation in drill core of 77 grains of visible gold, indicate a substantial portion of the gold in this intersection is coarse grained free gold. The highest single assay is 5.70 oz Au/T over 3.3 feet.

The 900 Zone is located 4,000 feet SSW of the Mineral Creek Zone from which assay data were recently reported. Both zones occur in volcanic rocks of the Sicker Group.

For further information contact Dr. A. E. Soregaroli (681-2253) or Mr. R. R. Walker (286-1814) at the Westmin offices.

Westmin Resources Limited Angle Resources Ltd. Nexus Resource Corporation

A. E. Soregaroli

Leon E. Nowek

James W. MacNeil

This news release was prepared by Westmin Resources Limited who accepts responsibility for its contents. The Vancouver Stock Exchange has neither approved or disapproved its contents.

Westmin Resources Limited
 904-1055 Dunsmuir Street
 Vancouver, B.C.
 V7X 1C4 (604) 681-2253

Angle Resources Ltd.
 1002-475 Howe Street
 Vancouver, B.C.
 V6C 2B3 (604) 682-8567

Nexus Resource Corporation
 1002-475 Howe Street
 Vancouver, B.C.
 V6C 2B3 (604) 682-8567

ADDITIONAL GOLD INTERSECTIONS
DEBBIE PROJECT, PORT ALBERNI, B.C.

February 16, 1987

Westmin Resources Limited, as operator, reports additional fire assays from the Mineral Creek Zone.

Hole	Section (m)	Dip	From (ft)	To (ft)	Length (ft)	Au (oz/T)
✓ DM9-86	20+65N	-75°W	203.5	205.4	1.9	0.303
			239.1	239.7	0.6	0.112
			281.6	289.7	8.1	0.147
			301.1	303.1	2.0	0.138
			327.6	338.9	11.3	0.175
			379.5	388.3	8.8	0.104
			470.8	477.0	6.2	0.091
DM12-86	20+65N	-50°W	172.9	181.1	8.2	0.164
			223.0	235.7	12.7	0.146
			(includes 223.0	226.5	3.5	0.389)
			255.8	262.1	6.3	0.105
DM15-86	20+65N	-85°W	410.9	418.5	7.6	0.556
			558.7	562.4	3.7	0.102
DM19-86	22+00N	-55°W	61.0	65.3	3.5	0.098
			191.7	207.3	15.6	0.099
			(includes 191.7	195.0	3.3	0.202)
			217.1	234.9	17.8	0.081
			261.4	264.4	3.0	0.156
269.6	270.6	1.0	0.153			
DM20-86	22+00N	-75°W	64.3	71.3	7.0	0.075
			305.0	306.4	1.4	0.099
DM25-87	19+45N	-60°W	288.6	297.2	8.6	0.110 ¹¹
DM28-87	19+45N	-70°SW	475.1	496.9	21.8	0.062
			547.7	551.0	3.3	0.105
DM29-87	20+00N	-71°W	78.7	165.6	86.9	0.087
			(includes 78.7	85.3	6.6	0.183)
			(and 141.0	159.1	18.1	0.171)
			(and 155.3	159.1	3.8	0.417)

For further information contact Dr. A. E. Soregaroli (681-2253) or Mr. R. R. Walker (286-1814) at the Westmin offices.

Westmin Resources Limited

Angle Resources Ltd.

Nexus Resource Corporation

A. E. Soregaroli

Leon E. Nowek

James W. MacNeil

Westmin Resources Limited
904-1055 Dunsmuir Street
Vancouver, B.C.
V7X 1C4
(604) 681-2253

Angle Resources Ltd.
1002-475 Howe Street
Vancouver, B.C.
V6C 2B3
(604) 682-8567

Nexus Resource Corporation
1002-475 Howe Street
Vancouver, B.C.
V6C 2B3
(604) 682-8567

January 13, 1987

GOLD INTERSECTED IN A SECOND ZONE
DEBBIE PROJECT, PORT ALBERNI, B.C.

Westmin Resources Limited as operator reports additional assays from the Mineral Creek Zone as well as initial drill results from a second discovery, the 900 Zone located more than 4,000 feet SSW of the Mineral Creek Zone.

Mineral Creek Zone:

<u>Hole</u>	<u>Section</u>	<u>Dip</u>	<u>From</u> (ft)	<u>To</u> (ft)	<u>Length</u> (ft)	<u>Au</u> (oz/T)
DM3-86	19+45N (reported previously)	-64°W	329.4	366.6	37.2	0.124
✓ DM5-86	19+45N	-75°W	223.5 304.0	232.5 306.5	9.0 2.5	0.311 0.145
DM12-86	20+50N	-50°W	172.9	181.1	8.2	0.164

900 Zone:

DN6-86	8+63N	-55°E	207.3	210.6	3.3	0.128
✓ DN8-86	8+63N	-75°E	131.5 149.6 (including 159.4)	134.8 171.2 171.2	3.3 21.6 11.8	0.101 0.143 0.213)
DN13-86	9+00N	-70°E	124.0	129.9	5.9	0.223

The Mineral Creek Zone is part of an extensive zone of pyritic, quartz-carbonate alteration within mafic volcanics of the Sicker Group. Mineralization in the 900 Zone is in bedded chert, cherty tuff and jasper within mafic volcanics of the Sicker Group.

For further information contact Dr. A. E. Soregaroli (681-2253) or Mr. R. R. Walker (286-1814) at the Westmin offices.

Westmin Resources Limited

Angle Resources Ltd.

Nexus Resource Corporation

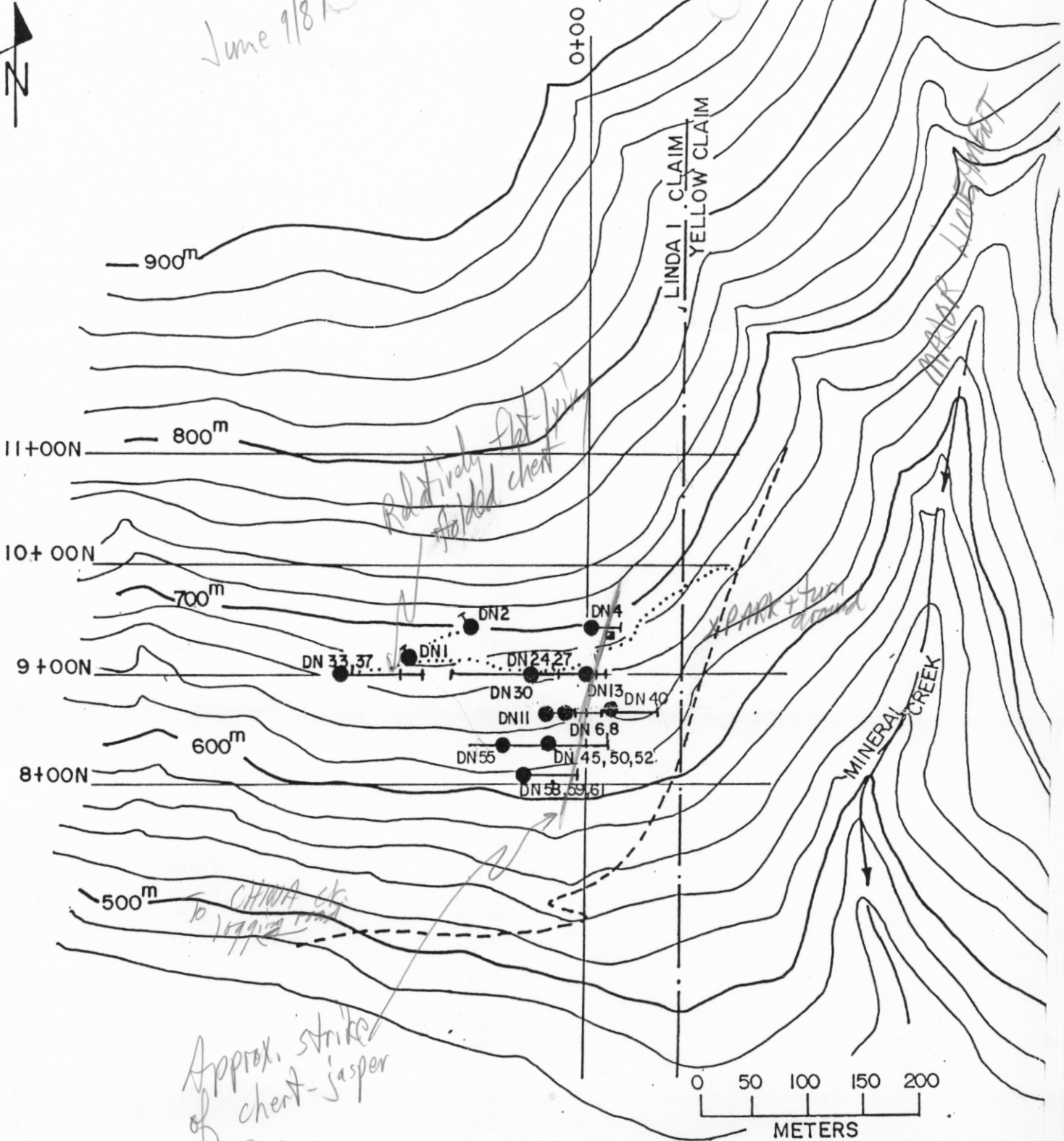
A. E. Soregaroli

Leon E. Nowek

James W. MacNeil



June 9/87



650 m = 2132 ft.

Approx. strike of chert-jasper zone

LEGEND

- DRILL HOLE
 - ◻ OLD SHAFT
 - LOG ROAD
 - FOOT TRAIL (excellent!)
- 'Warspite'?

WESTMIN RESOURCES LIMITED
DATE FEB 28/87 GEOLOGIST TRUEMAN
DEBBIE PROJECT
900 AREA
DRILL HOLE PLAN
SCALE 1:5000

9/87



600m

600m

500m

YELLOW CLAIM

400m

DLM 46

DLM 47

DLM 54

DLM 49

Didn't see!

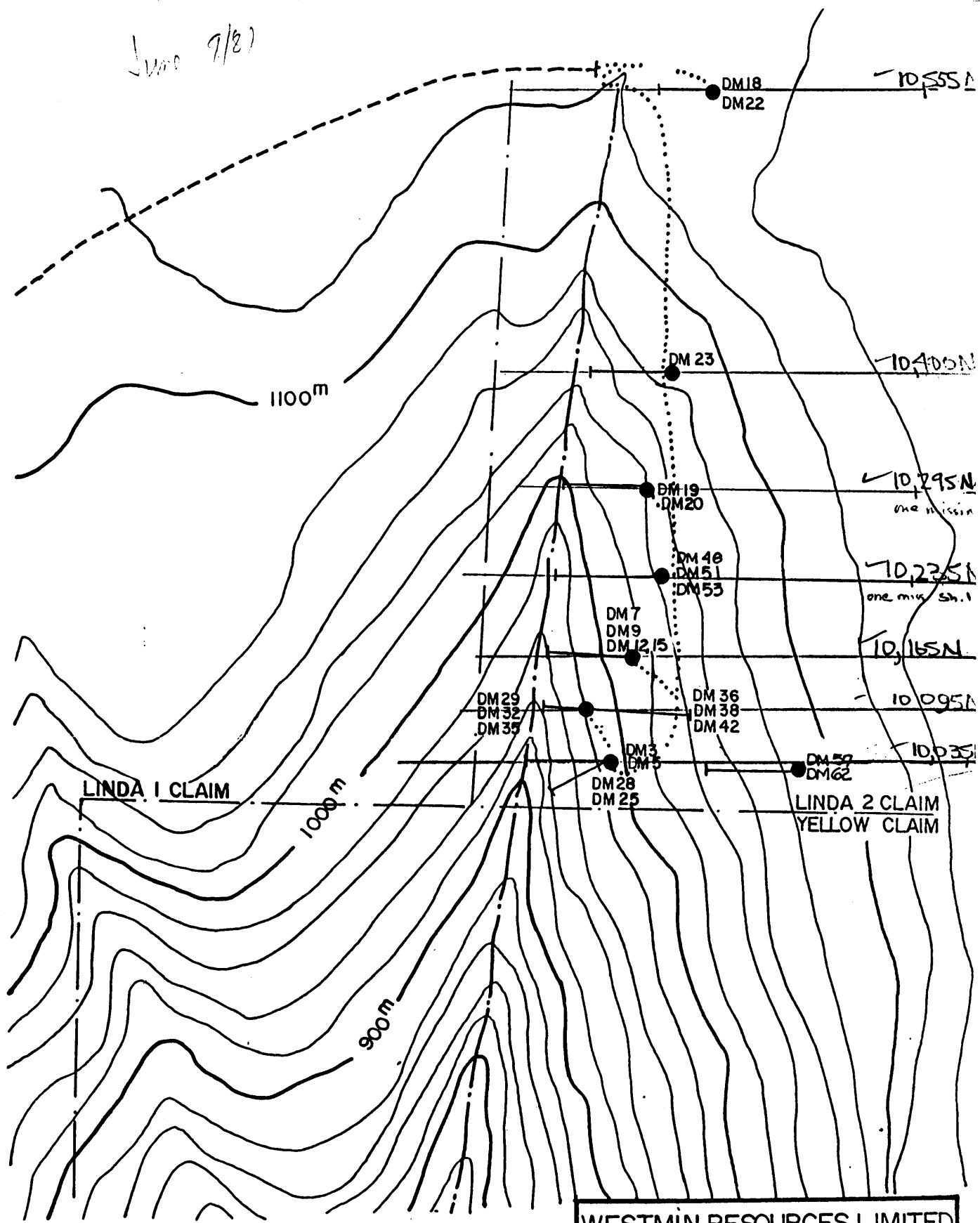
LEGEND

— DRILL HOLE

==== LOG. ROAD

WESTMIN RESOURCES LIMITED
DATE MAR 2/87 GEOLOGIST G. PRICE
DEBBIE PROJECT
LOWER MINERAL CREEK
DRILL HOLE PLAN
SCALE 1:5000

June 9/87



- LEGEND**
- PLANNED DRILL SITE
 - DRILL HOLE
 - LOG ROAD
 - FOOT TRAIL

WESTMIN RESOURCES LIMITED
 DATE MAR 2/87 GEOLOGIST WATKINS
DEBBIE PROJECT
 MINERAL CREEK AREA
DRILL HOLE PLAN
 SCALE 1:5000

Westmin Resources Limit.
904-1055 Dunsmuir Street
Vancouver, B.C.
V7X 1C4 (604) 681-2253

Angle Resources Ltd.
3270-666 Burrard Street
Vancouver, B.C.
V6C 2Z9 (604) 682-8567

Nexus Resource Corporation
3270-666 Burrard Street
Vancouver, B.C.
V6C 2Z9 (604) 682-8567

April 13, 1987

**NEW GOLD ZONE INTERSECTED NEAR
MINERAL CREEK ZONE, DEBBIE PROJECT,
PORT ALBERNI, VANCOUVER ISLAND, B.C.**

Westmin Resources Limited, operator of the Debbie Project, reports additional drill intersections from the Mineral Creek Zone, and from a new zone approximately 800 feet east of the Mineral Creek Zone. Two drill holes (DM57 and 62) in the new zone intersected discrete, high grade, quartz veins with a moderate east dip. This area is now designated as the Linda Zone.

A) MINERAL CREEK ZONE

<u>Hole</u>	<u>Section</u> (m)	<u>Dip</u>	<u>From</u> (ft)	<u>To</u> (ft)	<u>Length</u> (ft)	<u>Au</u> (oz/T)
DM32	20+00N	-80°W	111.8	118.4	6.6	0.166
			180.7	182.7	2.0	0.104
			210.6	213.3	2.7	0.121
DM35	20+00N	-87°W (includes	201.4	240.4	39.0	0.067
			224.9	230.3	5.4	0.105)
DM36	20+00N	-45°E	118.7	120.3	1.6	0.845
			168.4	171.7	3.3	0.485
DM43	20+00N	-70°E	247.2	260.9	13.7	0.246
DM51	21+50N	-60°W	396.6	398.0	1.4	0.248

B) LINDA ZONE

DM57	19+50N	-55°W	127.1	127.8	0.7	4.895
			420.4	427.2	6.8	0.347
DM62	19+50N	-70°W	132.4	142.2	9.8	0.578
			421.0	426.2	5.2	0.312

This report completes the significant results from the Mineral Creek Zone-Linda Zone drill program which was concluded at the end of February. A further drill program is planned.

For additional information contact Dr. A. E. Soregaroli (681-2253) or Mr. R. R. Walker (286-1814) at the Westmin offices.

Westmin Resources Limited Angle Resources Ltd. Nexus Resource Corporation

A. E. Soregaroli

Leon E. Nowek

James W. MacNeil

This news release was prepared by Westmin Resources Limited who accepts responsibility for its contents. The Vancouver Stock Exchange has neither approved or disapproved its contents.

Westmin Resources Limited
904-1055 Dunsmuir Street
Vancouver, B.C.
V7X 1C4
(604) 681-2253

Angle Resources Ltd.
1002-475 Howe Street
Vancouver, B.C.
V6C 2B3
(604) 682-8567

Nexus Resource Corporation
1002-475 Howe Street
Vancouver, B.C.
V6C 2B3
(604) 682-8567

December 10, 1986

GOLD INTERSECTED IN DRILL CORE
DEBBIE PROJECT, PORT ALBERNI, B.C.

Westmin Resources Limited, operator of the Debbie Project near Port Alberni, B.C. has intersected gold in its first diamond drill hole on the Upper Mineral Creek alteration zone. Funding is being provided by Nexus Resource Corporation and Angle Resources Ltd. who can earn a 50% interest in the project by providing \$1 million in exploration funds prior to February 28, 1988.

Hole D3-86 intersected 37.2 feet from 329.4 to 366.6 feet which returned assays averaging 0.124 oz/t gold. Within this intersection a 9.4-foot section (336.2 to 345.6 feet) grades 0.171 oz/t gold and 8.5 feet (352.1 to 360.6 feet) grades 0.179 oz/t gold. The drill hole tests part of an extensive pyritic, quartz-carbonate alteration zone within mafic volcanic rocks of the Sicker Group. Several additional holes will test this altered zone and other gold-bearing targets on the property in an accelerated exploration program, which now includes four drill rigs.

Nexus has now earned a 10% working interest in the property by funding the present \$461,000 exploration program. Due to the significant discovery Angle will provide an additional \$539,000 for the 1986/87 program which will, on completion, provide each of Nexus and Angle with a 25% working interest.

For further information contact Dr. A. E. Soregaroli (681-2253) or Mr. R. R. Walker (286-1814) at the Westmin offices.

Westmin Resources Limited

Angle Resources Ltd.

Nexus Resource Corporation

A. E. Soregaroli

Leon E. Nowek

James W. MacNeil