
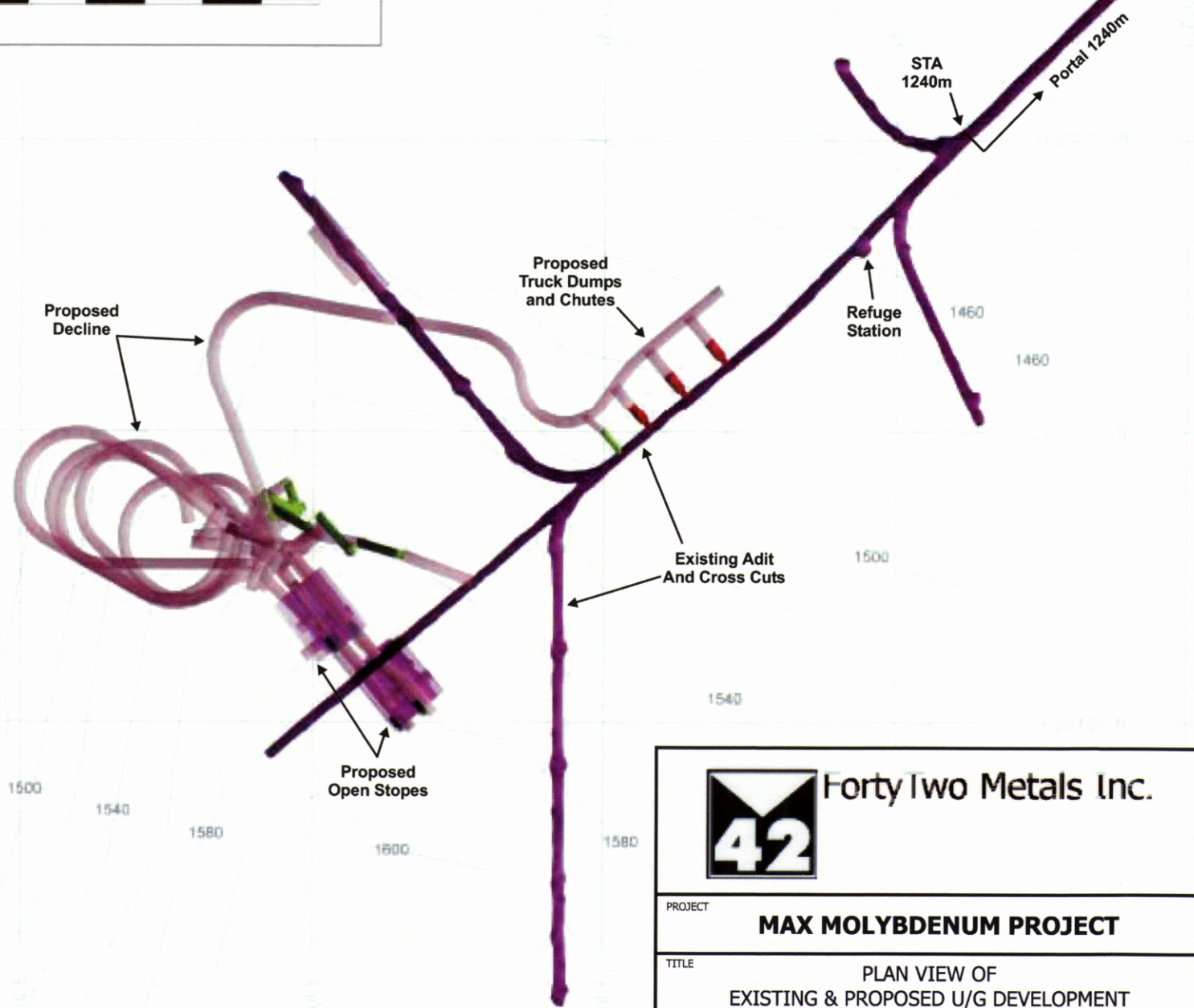
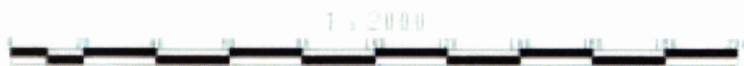


0327-003-01 FIG3.1-1.cdr

885299
MAX

Tom Schwartz
June 18/05

 Forty Two Metals Inc.			
PROJECT			
MAX MOLYBDENUM PROJECT			
TITLE			
PLAN VIEW OF EXISTING & PROPOSED U/G DEVELOPMENT			
DATE	SCALE	DRAWN	
APRIL 2005	1:750	GCB	
PROJECT No.	FIGURE No.	REV.	
0327-003-01	3.1-1	0	



Forty Two Metals Inc.

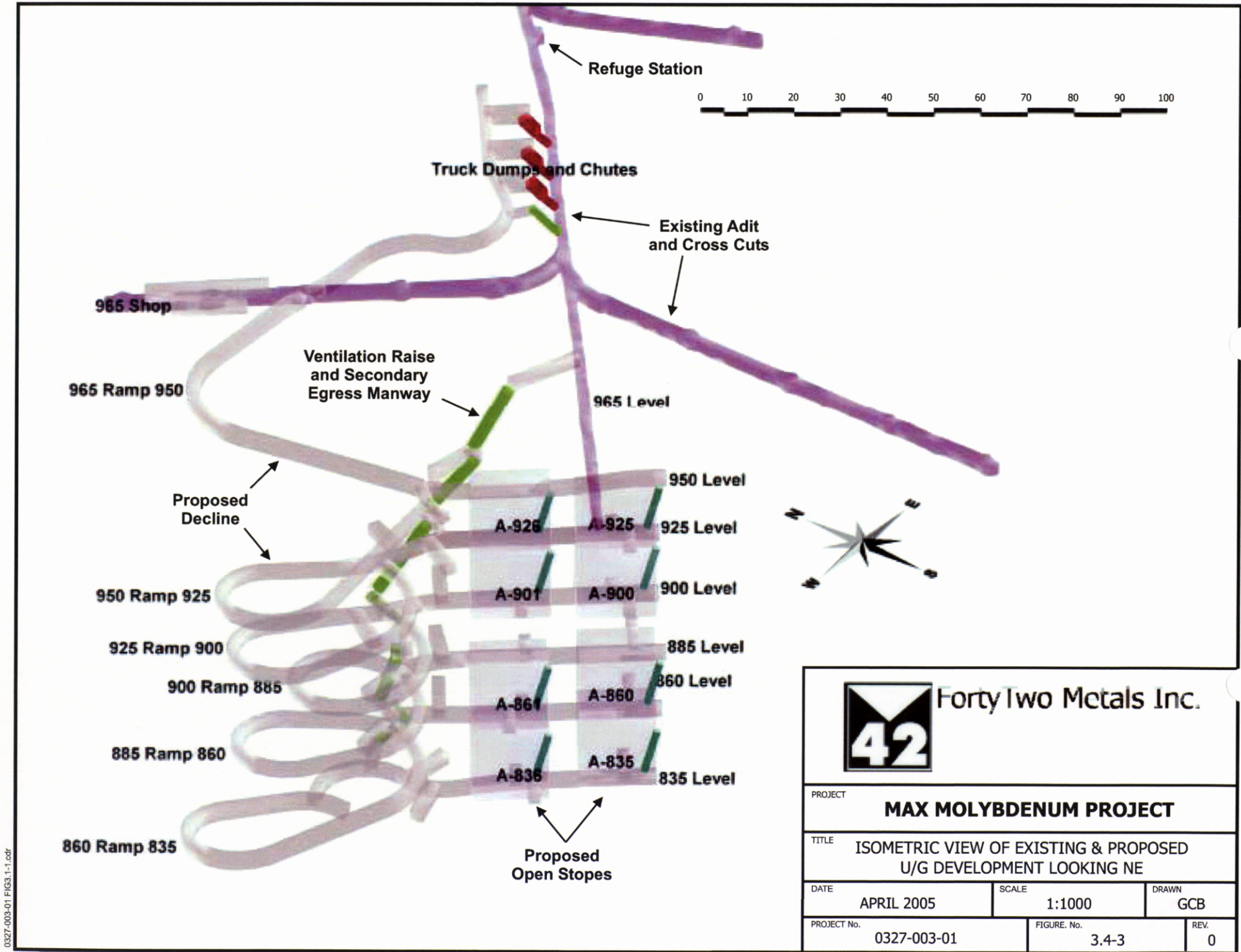
PROJECT **MAX MOLYBDENUM PROJECT**

TITLE **PLAN VIEW OF EXISTING & PROPOSED U/G DEVELOPMENT**

DATE APRIL 2005	SCALE 1:2000	DRAWN GCB
--------------------	-----------------	--------------

PROJECT No. 0327-003-01	FIGURE No. 3.4-1	REV. 0
----------------------------	---------------------	-----------

0327-003-01 FIG3.1-1.cdr

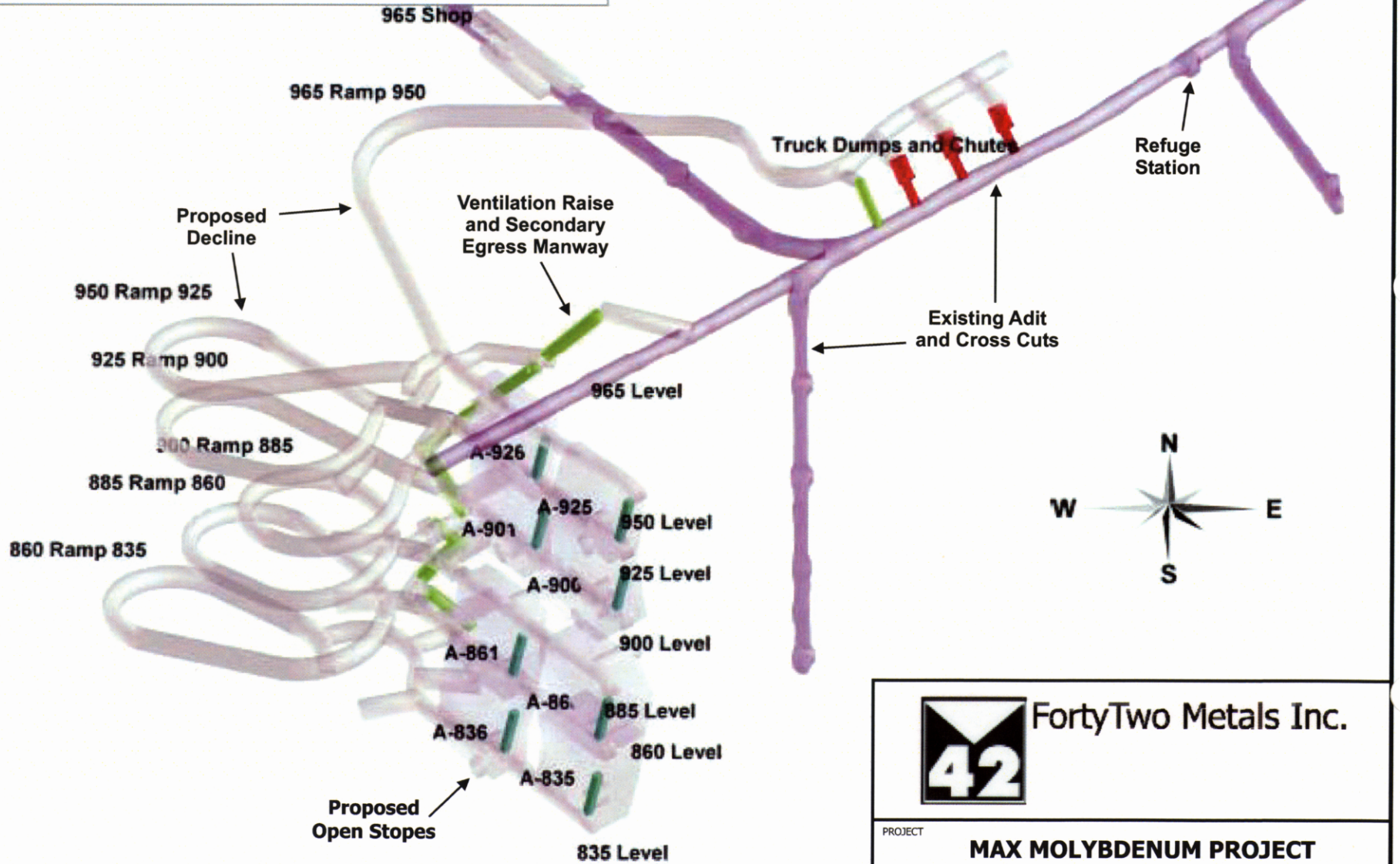
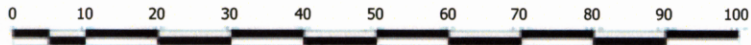


0327-003-01 FIG3.1-1.cdr



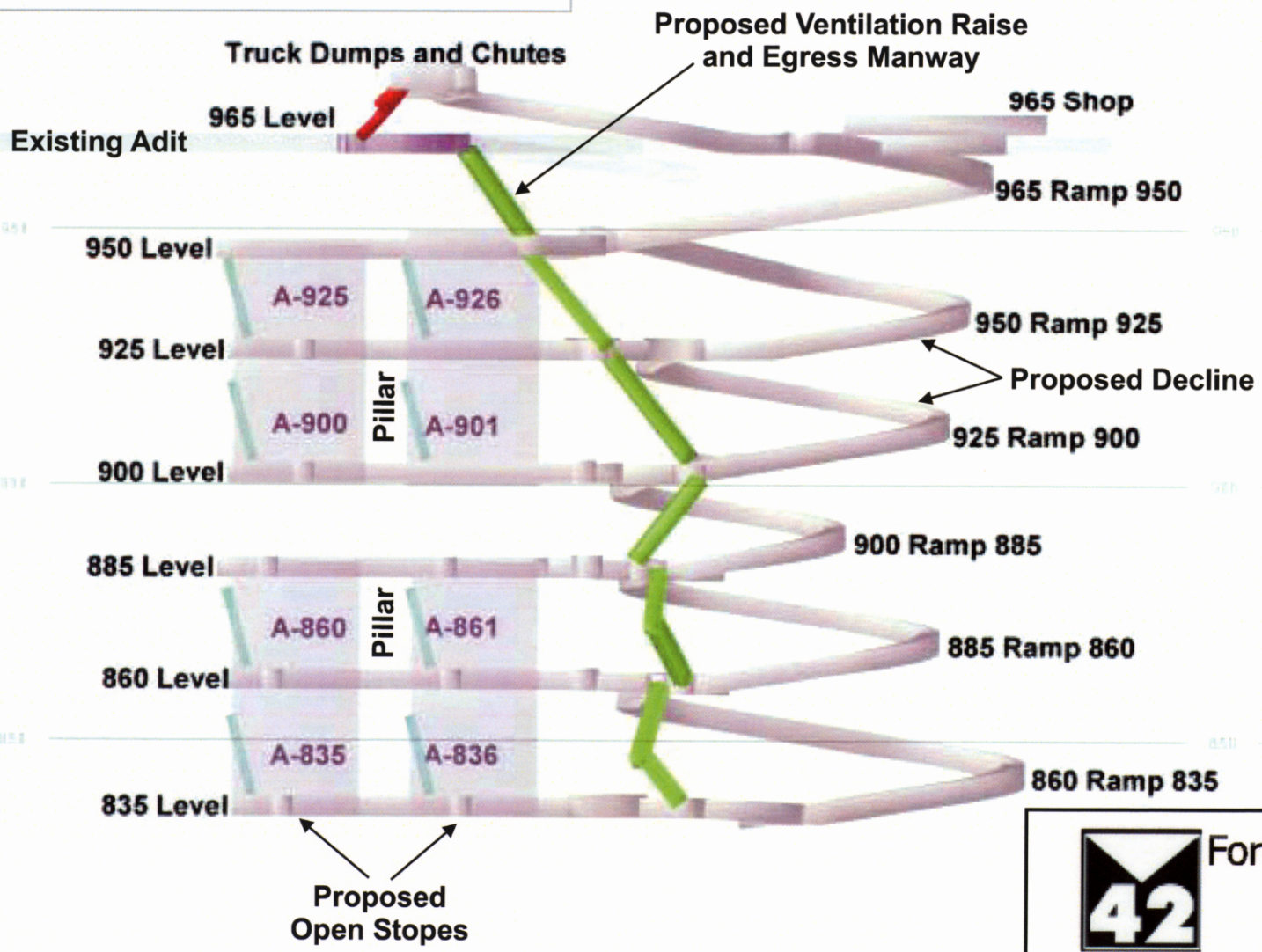
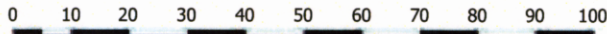
Forty Two Metals Inc.

PROJECT			MAX MOLYBDENUM PROJECT		
TITLE					
ISOMETRIC VIEW OF EXISTING & PROPOSED U/G DEVELOPMENT LOOKING NE					
DATE	SCALE	DRAWN			
APRIL 2005	1:1000	GCB			
PROJECT No.	FIGURE No.	REV.			
0327-003-01	3.4-3	0			



FortyTwo Metals Inc.

PROJECT			MAX MOLYBDENUM PROJECT		
TITLE					
PROPOSED SMALL MINE U/G DEVELOPMENT LOOKING NORTH					
DATE		SCALE		DRAWN	
APRIL 2005		1:1000		GCB	
PROJECT No.			FIGURE No.		REV.
0327-003-01			3.4-4		0



FortyTwo Metals Inc.

PROJECT			MAX MOLYBDENUM PROJECT		
TITLE			PROPOSED SMALL MINE U/G DEVELOPMENT SECTION		
DATE	SCALE	DRAWN			
APRIL 2005	1:1250	GCB			
PROJECT No.	FIGURE No.	REV.			
0327-003-01	3.4-2	0			

0327-003-01 FIG3.1-1.cdr