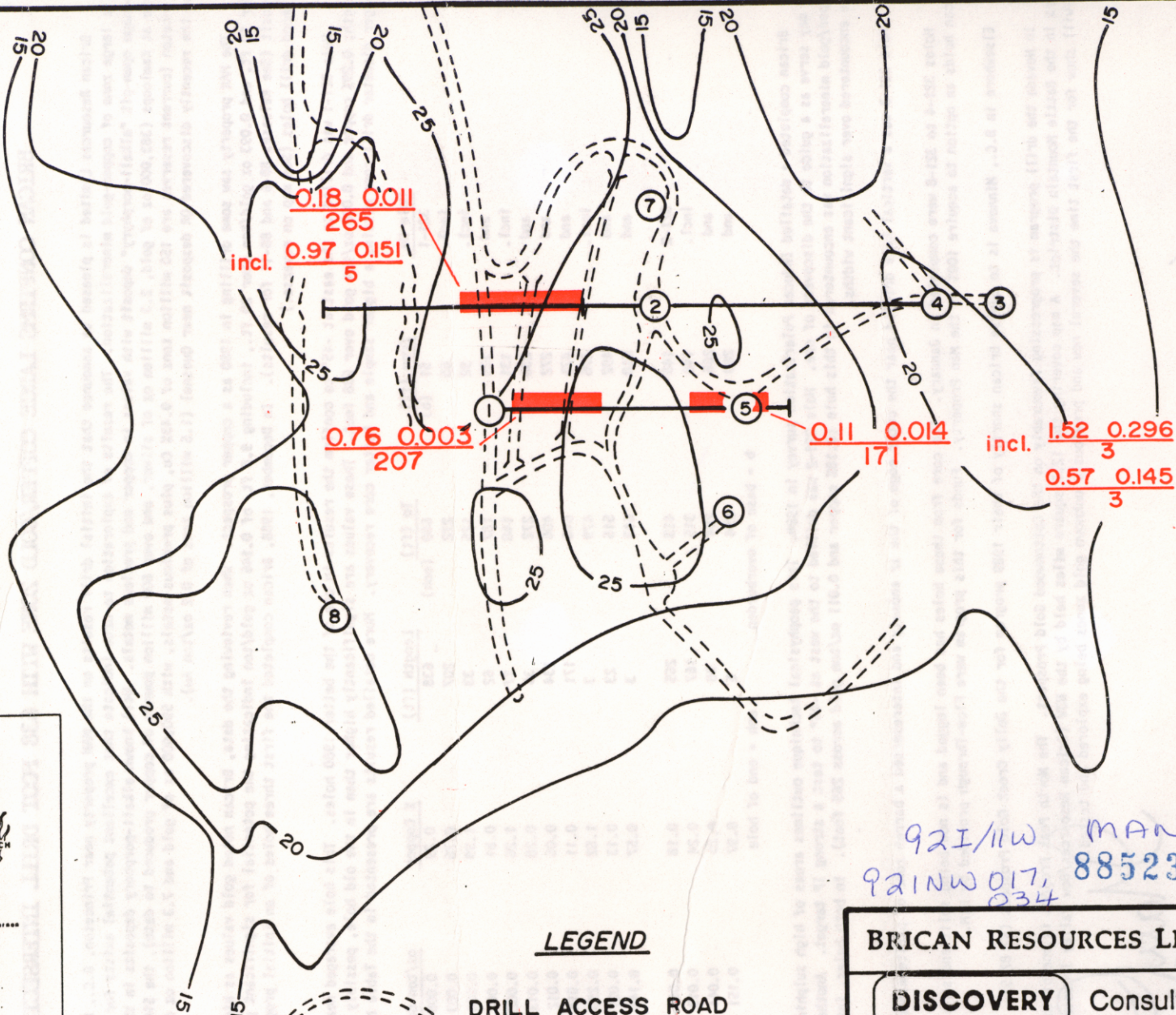
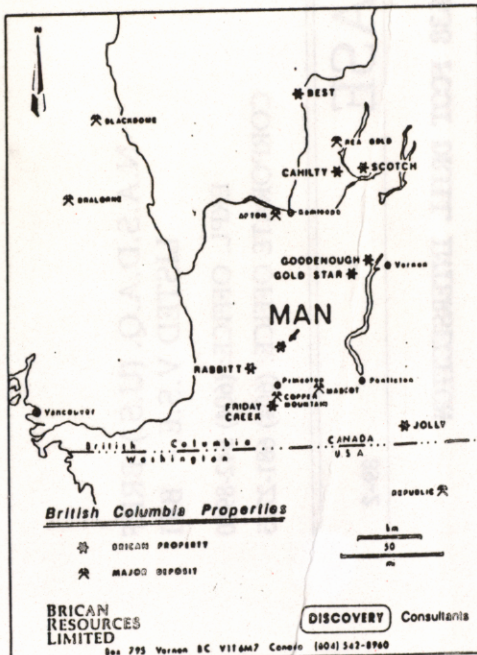


SCALE 1:3000



LEGEND

DRILL ACCESS ROAD

I.P. ANOMALY (Chargeability in millivolts per volt. n=3)

DRILL HOLE LOCATION

ASSAY INTERVAL  
(Values shown in % Copper & Oz/Ton Gold over length in Ft.)

%Cu Oz/Ton Au  
Feet

92I/11W MAN  
92INW017, 885233  
034

BRICAN RESOURCES LIMITED

**DISCOVERY** Consultants

MAN PROPERTY  
DRILL PLAN

DATE:	FEB/1969	SCALE:	1:3000
PROJECT:	321	NTS:	92-H/9,16
DWG. BY:	R.M.		SIMLKAMEEN MINING DIV.

# BRICAN RESOURCES LIMITED

BOX 795 VERNON B.C. V1T 6M7 CANADA

N.A.S.D.A.Q. (U.S.)-BRIIF  
LISTED V.S.E.- BRI

EXPL. OFFICE: (604) 542-8960  
CORPORATE OFFICE: (604) 681-2725

February 2, 1989

## NEWS RELEASE

89-2

### BRICAN CONFIRMS LARGE COPPER/GOLD ZONE WITH 638 FOOT DRILL INTERSECTION

Brican Resources Limited is pleased to announce that the initial drill results on the MAN property near Princeton, B.C., have confirmed the presence of a large zone of copper-gold mineralization. The results of exploration to date indicate that excellent potential exists for the development of a large tonnage open-pit "alkali-porphry" deposit with values in copper and precious metals. Well known alkali-porphry deposits in the region include the Afton Mine at Kamloops (383,000 oz of gold, 2.3 million oz of silver, and over 800 million pounds of copper produced to date), the Similkameen Copper Mine near Princeton (current reserves are 150 million tons of 0.43% Cu, plus precious metals, with 590,000 oz of gold and 7.3 million oz of silver produced to date), and the recently discovered QR deposit near Quesnel (1.5 million tons of 0.2 oz/ton Au).

The MAN property saw some drilling in 1980 as a copper prospect. When reviewing the data, Brican noted gold values as high as 0.204 oz gold/ton over 10 ft. and 0.093 oz gold/ton over 20 ft., including 9.8 ft. of 0.146 oz gold/ton indicating the potential for significant gold values in the copper deposit (See Releases 88-6 and 88-11 for results). In December, 1988, Brican completed the first three holes of an initial program of eight widely spaced diamond drill holes (See map on reverse.)

Hole 321-1 was drilled to the east at -45° to confirm the results in one of the better 1980 holes. This hole averaged near ore-grade over its entire length; 0.29% copper and 0.008 oz/ton gold over 638 feet. These values are significantly higher than in the old hole, possibly due to the fact that the larger diameter drill core obtains a bigger sample and better core recovery. More detailed results are presented in the Table below.

Hole No.	From (ft)	To (ft)	Length (ft)	% Copper	oz/ton Gold
321-1	51 (b)	689 (eoh)	638	0.29	0.008
incl.	65	272	207	0.76	0.003
incl.	92	125	33	1.39	0.006
and	125	187	62	0.81	0.001
incl.	131	148	17	1.26	0.002
and	236	272	36	0.28	0.013
and	272	406	134	0.05	0.012
and	475	646	171	0.11	0.014
incl.	476	479	3	1.52	0.296
and	492	515	23	0.13	0.021
and	610	613	3	0.57	0.145
321-2	148	413	265	0.18	0.011
incl.	148	315	167	0.24	0.013
and	266	294	28	0.25	0.044
and	289	294	5	0.97	0.151

b = base of overburden

eoh = end of hole

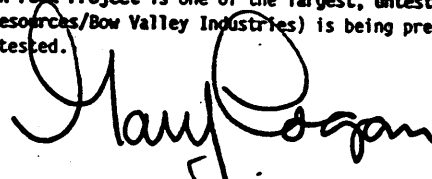
Brican completed a detailed Induced Polarization survey in 1988. This geophysical technique outlines areas of high sulphide mineral concentration and may serve as a guide to the discovery of ore. Hole 321-2 was drilled to the west at -45° to test a strong IP target. Another wide intersection of copper/gold mineralization was encountered in this hole (0.18% copper and 0.011 oz/ton gold across 265 feet). In both holes, intersections of higher values were encountered over significant widths.

Hole 321-3 was a vertical hole drilled near the outer edge of the IP anomaly and intersected a barren zone of pyrite mineralization.

Holes 321-4 to 321-8 were completed in January. The core from these holes has been logged and is now being split and sent to the lab for assay. Brican holds an option to acquire 100% of the Man Property. Funds for this program were Flow-Through provided by MIN.

Elsewhere in B.C., Minnova is to advise Brican shortly of their 1989 program for the Jelly Creek Gold Prospect (NR 87-5).

In Nevada the drill program is progressing favourably on the Cottonwood Gold Prospect. The North Peak Project is one of the largest, untested gold plays in the Battle Mountain District. A map covering the 12.5 square miles held by the NJV (Brican Resources/Bow Valley Industries) is being prepared and will show for the first time the several new and previously unknown gold zones being explored and tested.



Gary Logan B.Sc.  
President  
Brican Resources Limited



GROWTH THROUGH EXPLORATION IN NORTH AMERICA

The Vancouver Stock Exchange has neither approved nor disapproved the contents of this News Release