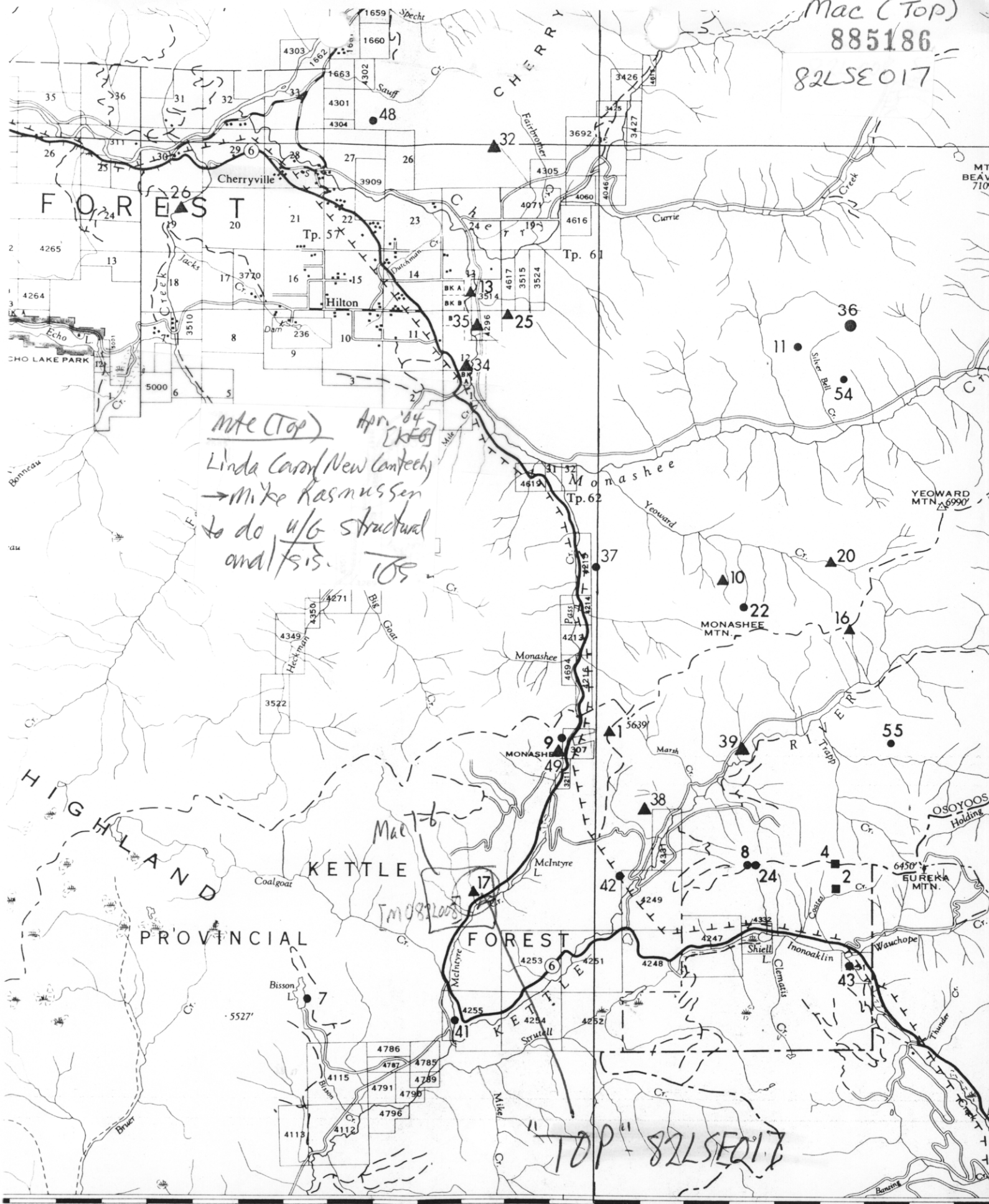
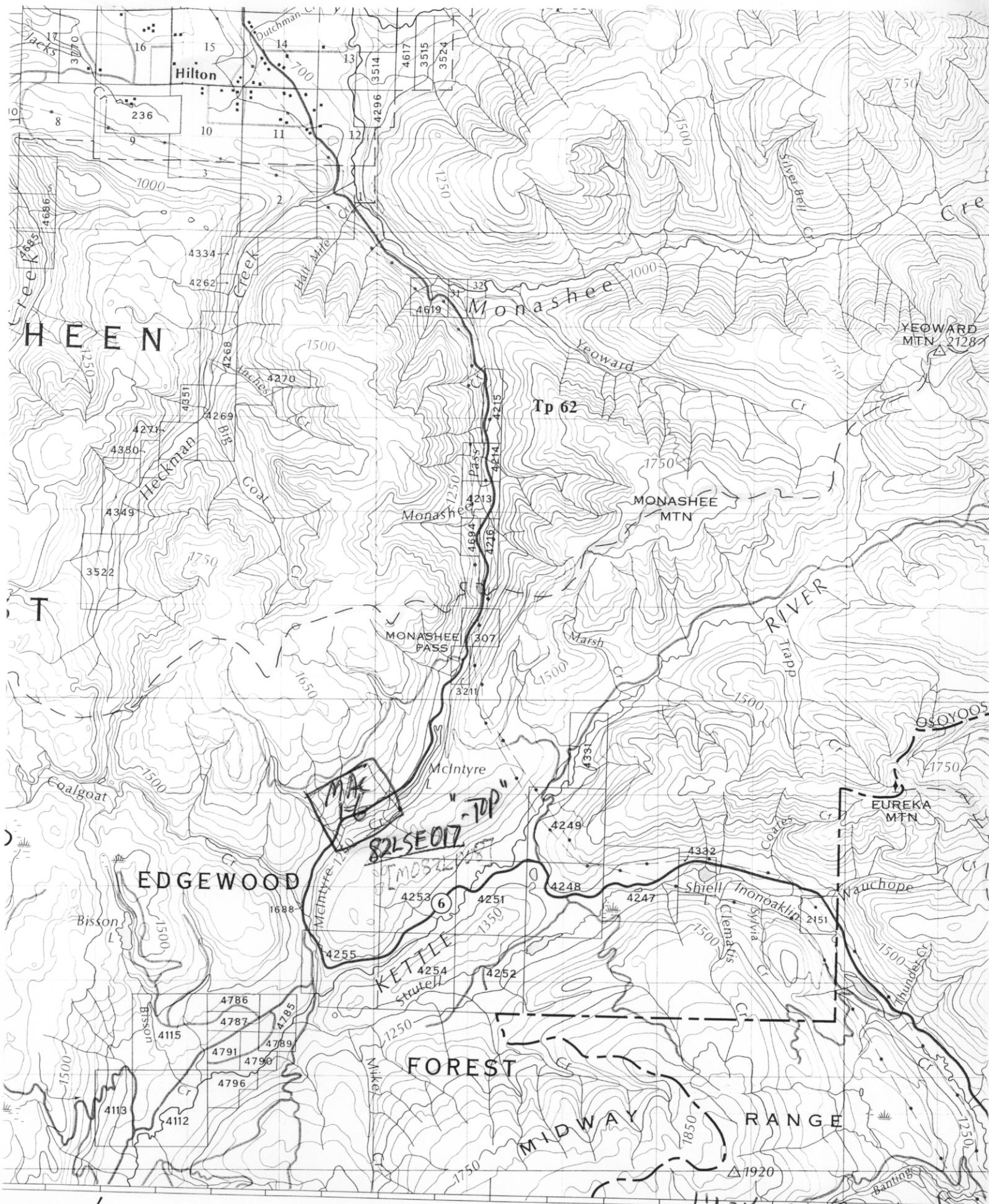


Mac (Top)
885186
82LSE017



Note (Top) Apr. 04
Linda Caron (New Cantech)
→ Mike Kasnussen
to do u/g structural
analysis. TOP

2003 - John Kemp / Linda Caron
Vend to Cantech (Ross Blusson / Dalton Dupiqui)
1:100,000 (Sugar Lake)



2 86 88 90 92 30' 94 96 98 400 02
 Christian Valley - 56 km
 2003 - John Kemp/Linda Caron
 Road to Contact (Ross Blusson/Dalton Puyepai)
 1:125,000 (Sugar Lake)

Schroeter, Tom EM:EX

TRE → RG
- Kamloops

From: Cathro, Mike EM:EX
Sent: Thursday, August 01, 2002 4:42 PM
To: Adams, Rick EM:EX; Britton, Jim; Brown, Derek; Grant, Brian EM:EX; Lefebure, Dave; Logan, Jim EM:EX; Ludwig, Allan; Madu, Bruce; McArthur, Gib; Schroeter, Tom; Simandl, George EM:EX; Smith, Don; David Terry; Houle, Jacques; Lane, Bob; Wojdak, Paul
Subject: Cathro Weekly to 8/01/02

4

HIGHLIGHTS

Big Bend Project (Orphan Boy Resources Inc.) - Notices of Work received for drilling on several copper-zinc-lead-gold-silver massive sulphide targets north of Revelstoke. Work would be split between the Goldstream mine (7 holes, 1400 m), C-1 (12 holes, 2400 m), Spire (6 holes, 1200 m) and Rift (7 holes, 1400 m) targets and is probably contingent on raising adequate funds.

FIELD WORK

Spent one day showing Jim Logan (GSB) the geology of the Iron Mask batholith, where he is starting a partnership program with Abacus Mining.

EXPLORATION AND MINING NEWS

Mac Claims (aka "Top", MF 082LSE017) - This gold-silver prospect, owned by Linda Caron and John Kemp, has been optioned by Cantech Ventures Inc. Drilling by junior companies in 1983-88 intersected up to 13 metres grading 16.1 g/t Au in a faulted vein. Commonwealth Gold Corp drove a 126.5 m decline in 1990, and the mineralized zone is reported to have averaged 14.4 g/t Au over 10 m. The company plans to hire a structural geologist to find the faulted extension of the vein.

Zeo (Zeo-Tech Enviro Corp./C2C Zeolite Corp) - Zeo-Tech has shipped its first container (20 tonnes?) of Princeton zeolite to Taiwan for use in the aquaculture industry. The company reports that their zeolite increases production of farmed shrimp.

Panorama Ridge (Goldcliff Resource Corp) - trenching and geochem have begun on this Hedley-area gold prospect. Follow-up drilling will depend on financing.

Mike

Mike Cathro, P. Geo
Regional Geologist
Mining Division
Ministry of Energy and Mines

Direct Telephone 250 554-5377
Messages & Inquiries 250 554-5370
Facsimile 250 554-5384
Autotel 250 372-6757
email mike.cathro@gems2.gov.bc.ca